

## ENDLESS LOOP — ENDEAVOUR



**Builder:** ENDEAVOUR

**Year Built:** 2014

**Model:** Catamaran

**Price:** PRICE ON APPLICATION

**Location:** United States

**LOA:** 40' 0" (12.19m)

**Beam:** 16' 0" (4.88m)

**Max Draft:** 3' 6" (1.07m)

**Cruise Speed:** 8 Kts. (9 MPH)

**Max Speed:** 18 Kts. (21 MPH)

Our experienced yacht broker, Andrey Shestakov, will help you choose and buy a yacht that best suits your needs **Endless Loop — ENDEAVOUR** from our catalogue. Presently, at Shestakov Yacht Sales Inc., we have a wide variety of yachts available on our sale's list. We also work in close contact with all the big yacht manufacturers from all over the world.

If you would like to buy a yacht **Endless Loop — ENDEAVOUR** or would like help answering any questions concerning purchasing, selling or chartering a yacht, please call **+1(954)274-4435**

# TABLE OF CONTENTS

TABLE OF CONTENTS	2
SPECIFICATIONS	6
Overview	6
Basic Information	6
Dimensions	6
Speed, Capacities and Weight	6
Accommodations	6
Hull and Deck Information	7
Engine Information	7
DETAILED INFORMATION	8
MAIN DESCRIPTION	8
40' ENDEAVOUR VESSEL WALKTHROUGH	8
40' ENDEAVOUR ACCOMMODATIONS	8
40' ENDEAVOUR SALON	8
40' ENDEAVOUR GALLEY	8
40' ENDEAVOUR DINING	9
40' ENDEAVOUR MASTER STATEROOM	9
40' ENDEAVOUR GUEST STATEROOM	9
40' ENDEAVOUR LAUNDRY	9
40' ENDEAVOUR FLYBRIDGE	9
40' ENDEAVOUR AFTDECK	9
40' ENDEAVOUR AUDIO/VISUAL EQUIPMENT	9
40' ENDEAVOUR ELECTRONICS	10
40' ENDEAVOUR ELECTRICAL SYSTEM	10
40' ENDEAVOUR ENGINE/MECHANICAL EQUIPMENT	10
40' ENDEAVOUR DECK EQUIPMENT	10
40' ENDEAVOUR TENDER	10
40' ENDEAVOUR SAFETY AND FIRE PROTECTION	11

40' ENDEAVOUR EXCLUSIONS	11
DISCLAIMER	11
Exclusions	11
Disclaimer	11
PHOTOS	12
1	12
2	12
3	12
4	12
5	12
6	12
7	13
8	13
9	13
10	13
11	13
12	13
13	14
14	14
15	14
16	14
18	14
17	14
19	15
20	15
21	15
22	15
23	16
24	16

---

25	16
26	16
27	16
28	16
29	17
30	17
31	17
32	17
33	17
34	17
35	18
36	18
37	18
38	18
39	18
40	18
41	19
42	19
43	19
44	19
45	19
46	19
48	20
47	20
49	20
50	20
51	20
52	20
53	21

---

54	21
56	21
55	21
57	22
58	22
59	22
60	22
61	22
62	22
63	23
64	23
65	23
66	23
67	23
68	23
69	24
70	24
71	24
72	24
73	24
CONTACTS	25
Contact details	25
Telephones	25
Office hours	25
Address	25

---

# SPECIFICATIONS

---

## Overview

---

Endless Loop is a 2014 40' Endeavour Trawler Cat in nice condition. She is the newest Endeavour Trawler Cat for sale presently and offers twin Yanmar main engines, Phasor 9.5 kW generator, Magnum inverter, oil change system, Sidepower bowthruster, very good engine room access, enclosed flybridge with internal stairs from the salon, AIS, main deck master stateroom and a queen size berth in the guest stateroom. She is a Great Loop veteran.

## Basic Information

---

**Category:** Catamaran

**Model Year:** 2014

**Year Built:** 2014

**Country:** United States

## Dimensions

---

**LOA:** 40' 0" (12.19m)

**Beam:** 16' 0" (4.88m)

**Max Draft:** 3' 6" (1.07m)

**Clearance:** 16' 5" (5.00m)

## Speed, Capacities and Weight

---

**Cruise Speed:** 8 Kts. (9 MPH)

**Max Speed:** 18 Kts. (21 MPH)

**Displacement:** 28500 Pounds

**Water Capacity:** 150 Gallons

**Holding Tank:** 60 Gallons

**Fuel Capacity:** 600 Gallons

## Accommodations

---

**Total Cabins:** 2

**Total Heads:** 2

---

## Hull and Deck Information

---

**Hull Material:** Fiberglass

## Engine Information

---

**Engines:** 2

**Manufacturer:** Yanmar

**Model:** 8LV320

**Engine Type:** Inboard

**Fuel Type:** Diesel

---

## DETAILED INFORMATION

---

### MAIN DESCRIPTION

---

Endless Loop is a 2014 40' Endeavour Trawler Cat in nice condition. She is the newest Endeavour Trawler Cat for sale presently and offers twin Yanmar main engines, Phasor 9.5 kW generator, Magnum inverter, oil change system, Sidepower bowthruster, very good engine room access, enclosed flybridge with internal stairs from the salon, AIS, main deck master stateroom and a queen size berth in the guest stateroom. She is a Great Loop veteran.

### 40' ENDEAVOUR VESSEL WALKTHROUGH

---

From the aftdeck, you can step down onto either integrated swimplatform, walk out either side deck to the foredeck and then through the forward door to the flybridge, or you can step into the salon. Once inside the salon, you will find the stairs to the flybridge starboard aft, entertainment and storage cabinetry to starboard, galley starboard forward, sofa, table and lounge chair to port and galley refrigeration port forward. The electrical panels are in the companionway, with the master stateroom forward and the guest stateroom down to port. The headroom in the flybridge and salon is 6'6", 6'2" in the master stateroom, 6'5" in the master stateroom shower, 6'6" in the guest stateroom and shower. the master stateroom berth is 6'6" long and the guest stateroom berth is 6'7" long.

### 40' ENDEAVOUR ACCOMMODATIONS

---

Endless Loop offers a main deck master stateroom forward with a queen size berth and an ensuite head with enclosed shower; and a guest stateroom to port with a queen size berth and ensuite head with enclosed shower.

### 40' ENDEAVOUR SALON

---

The salon offers an entertainment center and storage cabinetry to starboard, sofa with storage, stool/storage, hi/lo folding table and lounge chair to port, vinyl teak & holly sole, opening side and aft windows with screens and shades, fans, bookshelf and bulwark storage cabinets. the interior cushions were re-upholstered in 2019.

### 40' ENDEAVOUR GALLEY

---

The galley is starboard forward in the salon.- Force 10 3-burner propane cooktop and oven- Princess Gourmet exhaust hood- Contoure convection/microwave oven- 2 X Nova-Kool refrigerator/freezers- U-Line icemaker- Wine cooler- Storage drawers and cabinets- Island counter/cabinet with double stainless steel sink- Magma stainless steel BBQ grill on the aftdeck



---

## 40' ENDEAVOUR DINING

---

Dining space is available at the salon and flybridge tables.

---

## 40' ENDEAVOUR MASTER STATEROOM

---

The main deck level full-beam master stateroom forward offers a centerline, walk-around queen size berth, nightstands, 2 portlights forward with screens and Oceanair shades, side windows with Oceanair shades, reading lights, storage drawers and cabinets, hanging locker, fans, Vizio flat screen TV and an ensuite head with enclosed shower.

---

## 40' ENDEAVOUR GUEST STATEROOM

---

The guest stateroom is to port and offers a queen size berth, reading light, shelf, storage drawers, hanging locker, fan, 2 portlights with Peek-a-Boo shades, Vizio flat screen TV and an ensuite head with enclosed shower.

---

## 40' ENDEAVOUR LAUNDRY

---

- Splendide 2100xc washer/dryer

---

## 40' ENDEAVOUR FLYBRIDGE

---

The enclosed flybridge offers the helm and Todd helmseat starboard forward, Imtra windshield wipers, foredeck access door forward, mate benchseat port forward, entertainment cabinet to port, wrap-around settee with hi/lo folding table and stool with storage port aft, sliding doors to the sundeck aft, stairs to the salon starboard aft, opening side windows with Textilene screens and opaque shades, vinyl teak & holly sole and fans. The interior cushions were re-upholstered in 2019.

---

## 40' ENDEAVOUR AFTDECK

---

The aftdeck offers a non-skid deck, tender storage, Magma stainless steel BBQ grill, storage cabinets aft, hot/cold fresh water shower, propane locker starboard forward, storage locker port forward, access to the aft end of each engine room, molded-in steps to each swimplatform, aluminum and glass door to the salon and access to each side deck.

---

## 40' ENDEAVOUR AUDIO/VISUAL EQUIPMENT

---

- KVH Tracvision TV3 satellite TV system (2018)- Glomex TV antenna- Samsung flat screen TV

in the flybridge- Samsung flat screen TV in the salon- Vizio flat screen TV in each stateroom- Polyplaner MrD 85i stereo in the salon- Polyplaner speakers

---

## **40' ENDEAVOUR ELECTRONICS**

---

- Raymarine Digital Radar- Raymarine Hybrid Touch multi-function display- Raymarine AIS transceiver (2018)- Raymarine Ray 218 VHF in the flybridge with Raymarine Raymic VHF remote in the master stateroom- Raymarine autopilot- Ritchie Powerdamp magnetic compass- Bell ship's clock in the salon- TP-Link AC 1200 router

---

## **40' ENDEAVOUR ELECTRICAL SYSTEM**

---

- Phasor K3 9.5 kW generator with approximately 234 hours- Magnum 3,000 watt inverter/charger- ProMariner ProLSO Charge 1-2 alternator distribution system- BlueSea battery switches- 50 amp shore power cord- Shore power connection each side- Marincos 30-50 amp splitter- Paneltronics electrical panels- Schneider Electric C40 DVM solar panel controller- 4 X 110 watt solar panels

---

## **40' ENDEAVOUR ENGINE/MECHANICAL EQUIPMENT**

---

- Twin Yanmar 8LV320 320 HP main engines with approximately 1.420 hours- ZF 63 gearboxes- Yanmar electronic engine controls- Yanmar engine systems monitor panels- Tides dripless shaft seals- Capilano/Hynautic hydraulic steering system- Centek exhaust systems- Dual Racor 75900MAX fuel filters with vacuum gauge for each main engine- Racor 500MA fuel filter for the generator- Jabsco fuel transfer pump- Sidepower bow thruster- Cruisair reverse cycle air conditioning/heating system- Jabsco Sensor-Max 17 fresh water system pump- Wema water tank gauge- Techma electric heads- Raritan tank monitor system- Intervac central vacuum system- Plumbed for a watermaker

---

## **40' ENDEAVOUR DECK EQUIPMENT**

---

- Maxwell anchor windlass with foot controls- Delta Fast set 55 lb anchor- Spare Danforth anchor- Anchor bridle- Stainless steel rails- Stainless steel deck hardware- Non-skid decks- Foredeck bow rail seats- Foredeck benchseat- Foredeck steps and upper deck and door to the flybridge- Foredeck under-deck storage lockers- Boarding gate each side- Washdown fore and aft- Stainless steel swim ladder- 2 X folding deck chairs on the sundeck

---

## **40' ENDEAVOUR TENDER**

---

- Endeavour custom 11' tender- Yamaha 20 HP 4-stroke outboard- Endeavour stainless steel davit system

---

## 40' ENDEAVOUR SAFETY AND FIRE PROTECTION

---

- Fire extinguishers- Seaward propane solenoid control in the galley- Lifesling2 overboard recovery system- Jabsco searchlight- Wolo horns- Standard Horizon loudhailer- Rule bilge pumps

---

## 40' ENDEAVOUR EXCLUSIONS

---

- Sellers' personal belongings

---

## DISCLAIMER

---

The Company offers the details of this vessel in good faith but cannot guarantee or warrant the accuracy of this information nor warrant the condition of the vessel. A buyer should instruct his agents, or his surveyors, to investigate such details as the buyer desires validated. This vessel is offered subject to prior sale, price change, or withdrawal without notice.

---

## Exclusions

---

Owner's personal belongings.

---

## Disclaimer

---

The Company offers the details of this vessel or yacht in good faith but cannot guarantee or warrant the accuracy of this information nor warrant the condition of the vessel. A buyer should instruct his representatives, agents, or his surveyors, to investigate such details as the buyer desires validated. This vessel or yacht is offered subject to prior sale, price change, or withdrawal without notice.

# PHOTOS

1



2



3



4



5



6



7



8



9



10



11



12



13



14



15



16



18

17



19



20



21



22



23



24



25



26



27



28





29



30



31



32



33



34



35



36



37



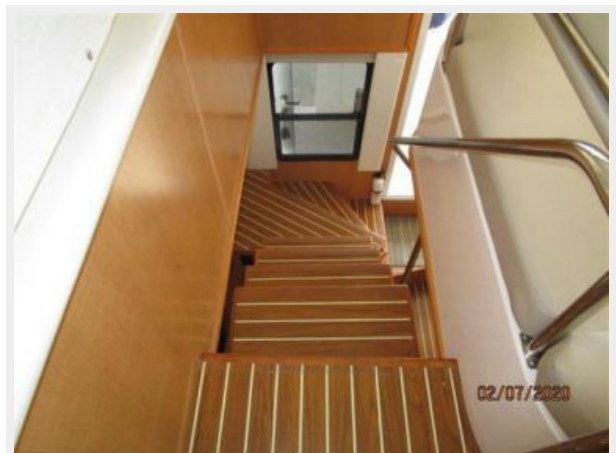
38



39



40



41



42



43



44



45



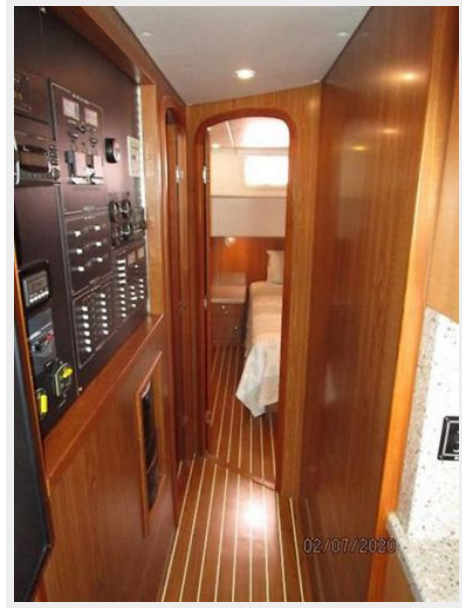
46



47



48



49



50



51



52



53



54



55



56



57



58



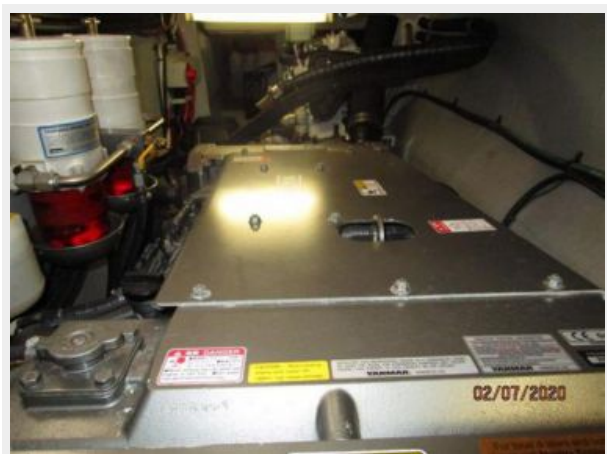
59



60



61



62



63



64



65



66



67



68



69



70



71



72



73





# CONTACTS

---

Andrey Shestakov, leading yacht broker of the sales department of Shestakov Yacht Sales Inc. Shestakov Yacht Sales Inc., the official representative of the Miami/Fort Lauderdale FL headquarters.

## Contact details

---

Email: [andrey@shestakovyachtsales.com](mailto:andrey@shestakovyachtsales.com)

Web: [shestakovyachtsales.com/en/](http://shestakovyachtsales.com/en/)

## Telephones

---

USA: +1(954)274-4435

## Office hours

---

Monday – Saturday: **9:00 - 21:00** EDT

Sunday: **closed**

## Address

---



Harbour Towne Marina, 850 NE 3rd St,  
STE 213, Dania, FL 33004