

SUNRISE — BENETTI



Builder: BENETTI

Year Built: 2011

Model: Motor Yacht

Price: PRICE ON APPLICATION

Location: Turkey

LOA: 93' (28.35m)

Beam: 23

Max Draft: 7' (2.13m)

Cruise Speed: 13 Knots Kts. (15 MPH)

Max Speed: 14 Knots Kts. (16 MPH)

Our experienced yacht broker, Andrey Shestakov, will help you choose and buy a yacht that best suits your needs **SUNRISE — BENETTI** from **our catalogue**. Presently, at **Shestakov Yacht Sales Inc.**, we have a wide variety of yachts available on **our sale's list**. We also work in close contact with all the big **yacht manufacturers** from all over the world.

If you would like to buy a yacht **SUNRISE — BENETTI** or would like help answering any questions concerning purchasing, selling or chartering a yacht, please call **+1(954)274-4435**

TABLE OF CONTENTS

TABLE OF CONTENTS	2
SPECIFICATIONS	4
Overview	4
Basic Information	5
Dimensions	5
Speed, Capacities and Weight	5
Accommodations	5
Hull and Deck Information	6
Engine Information	6
PHOTOS	7
BENETTI SUNRISE (2)	7
BENETTI SUNRISE (3)	7
BENETTI SUNRISE (4)	7
BENETTI SUNRISE (5)	7
BENETTI SUNRISE (6)	7
BENETTI SUNRISE (7)	8
BENETTI SUNRISE (8)	8
BENETTI SUNRISE (9)	8
BENETTI SUNRISE (10)	8
BENETTI SUNRISE (12)	8
BENETTI SUNRISE (11)	8
BENETTI SUNRISE (13)	9
BENETTI SUNRISE (14)	9
CONTACTS	14
Contact details	14
Telephones	14
Office hours	14
Address	14

SPECIFICATIONS

Overview

Benetti Class Delfino 93 motor yacht is a 28.5 meters (93'6") vessel built by the Italian shipyard Benetti of the Azimut-Benetti Group. Delfino 93 motoryacht offers accommodation to up to 10 charter guests in 5 beautifully furnished suites, each with stunning en-suite bathroom. Her interior design is a reflection of professionalism by Carlo Galeazzi, with the exterior styling and concept by Stefano Righini.

Delfino 93 yacht is the first model in the Benetti Class line, reflecting the unmistakable Benetti experience and style. She represents a combination of aesthetically unique line with great comfort and state of the art technology.

For Benetti shipyard Delfino 93 motoryacht is closely linked with their history. The first motor yacht of this name was presented at the 1969 Genoa trade show. The Delfino 93' truly is one of a kind. Its compact dimensions enclose the design solutions, technical equipment and practical, comfortable spaces typical of larger yachts. This has been made possible thanks to the 7-meter wide midship section granting great comfort even at the lower deck, where two spacious VIP cabins and two guest cabins have been arranged.

Below deck there are two large VIP cabins and two guest cabins. The master cabin features a particularly large glass panel, despite the presence of a side passage. The internal areas have been designed by Carlo Galeazzi, obtaining a refined stylistic balance, characterized by an up-to-date contemporary décor. The light - natural and artificial - is also a design element, in particular the inclusion of large continuous tinted glass panels adds to the elegant comfortable atmosphere of the interior.

The exterior design style has been innovated by Stefano Righini and is marked by large, continuous windows that allow the ship owner and his guests to enjoy many different beautiful panoramic views over the sea. The interior decor has been designed by Galeazzi Studio and is available in two different versions: modern and classic style, with extremely elegant details and loose furniture.

Practicality and comfort are guaranteed in the wheelhouse too, whose interiors are designed as a shuttle with large vertical windows. The excellent visibility guaranteed at 180° makes Delfino a joy for the ship owner himself to steer.

KEY FEATURES

- She offers accommodation for up to 10 guests in 5 staterooms
- Zero speed fin stabilizers
- Full displacement hull for increased range of 1500nm and comfortable cruising at 13knots
- Jacuzzi on fly-bridge

Basic Information

Category: Motor Yacht

Sub Category: Displacement

Model Year: 2011

Year Built: 2011

Country: Turkey

Dimensions

LOA: 93' (28.35mm)

Beam: 23

Max Draft: 7' (2.13mm)

Speed, Capacities and Weight

Cruise Speed: 13 Knots Kts. (15 MPH) **Cruise Speed Range:** 1500

Max Speed: 14 Knots Kts. (16 MPH) **Gross Tonnage:** 152 Pounds

Water Capacity: 2300 Gallons **Fuel Capacity:** 4226.75 Gal Gallons

Accommodations

Total Cabins: 5

Total Berths: 7

Sleeps: 10

Crew Cabin: 3

Crew Berths: 3

Hull and Deck Information

Hull Material: Composite

Engine Information

Engines: 2

Manufacturer: MTU

Engine Type: Inboard

Fuel Type: Diesel

PHOTOS

BENETTI SUNRISE (2)



BENETTI SUNRISE (3)



BENETTI SUNRISE (4)



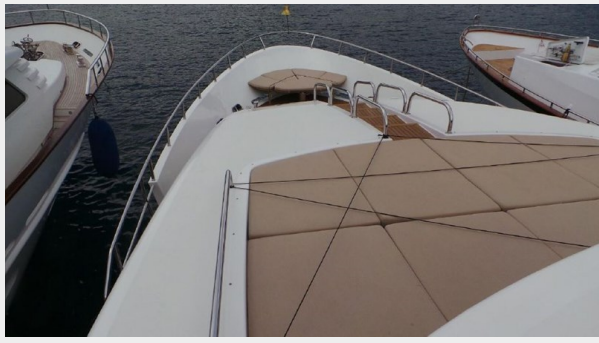
BENETTI SUNRISE (5)



BENETTI SUNRISE (6)



BENETTI SUNRISE (7)



BENETTI SUNRISE (8)



BENETTI SUNRISE (9)



BENETTI SUNRISE (10)



BENETTI SUNRISE (11)



BENETTI SUNRISE (12)

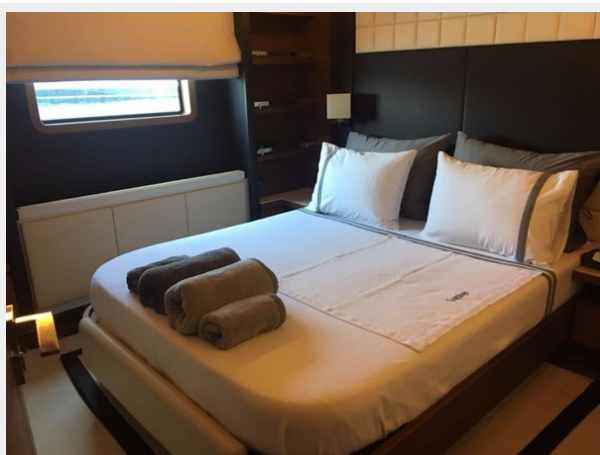
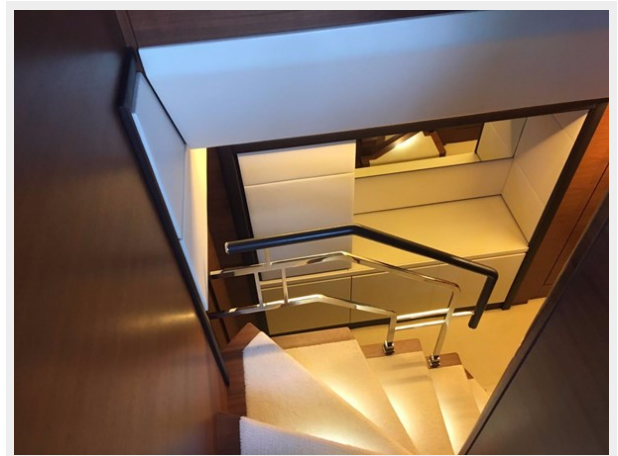


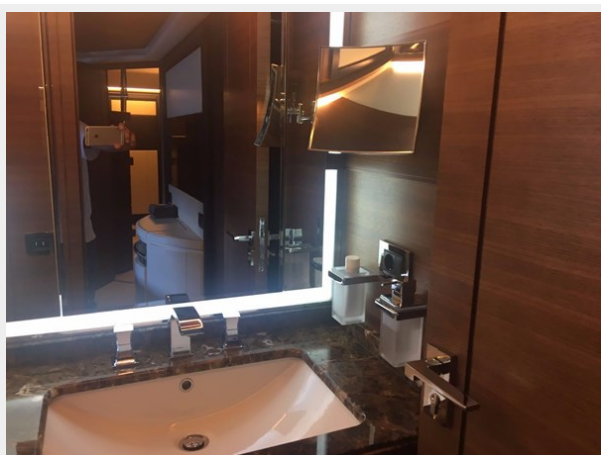
BENETTI SUNRISE (13)

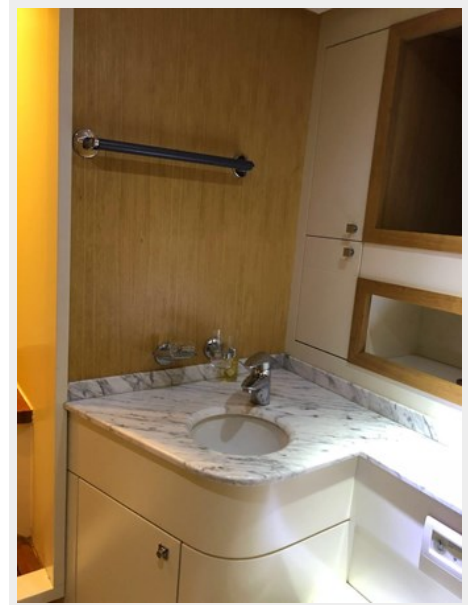
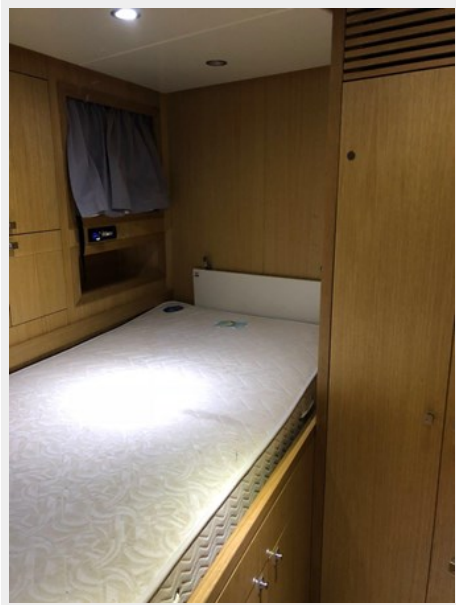


BENETTI SUNRISE (14)











CONTACTS

Andrey Shestakov, leading yacht broker of the sales department of Shestakov Yacht Sales Inc. Shestakov Yacht Sales Inc., the official representative of the Miami/Fort Lauderdale FL headquarters.

Contact details

Email: **andrey@shestakovyachtsales.com**

Web: shestakovyachtsales.com/en/

Telephones

USA: **+1(954)274-4435**

Office hours

Monday – Saturday: **9:00 - 21:00** EDT

Sunday: **closed**

Address



Harbour Towne Marina, 850 NE 3rd St, STE 213, Dania, FL 33004