

RHON-DA-VOUX — GULFSTAR



Builder: GULFSTAR

LOA: 49' 0" (14.94m)

Year Built: 1988

Beam: 15' 1" (4.60m)

Model: Trawler

Price: PRICE ON APPLICATION

Location: United States

Our experienced yacht broker, Andrey Shestakov, will help you choose and buy a yacht that best suits your needs **Rhon-Da-Voux — GULFSTAR** from our catalogue. Presently, at Shestakov Yacht Sales Inc., we have a wide variety of yachts available on our sale's list. We also work in close contact with all the big yacht manufacturers from all over the world.

If you would like to buy a yacht **Rhon-Da-Voux — GULFSTAR** or would like help answering any questions concerning purchasing, selling or chartering a yacht, please call **+1(954)274-4435**

TABLE OF CONTENTS

TABLE OF CONTENTS	2
SPECIFICATIONS	6
Overview	6
Basic Information	6
Dimensions	6
Speed, Capacities and Weight	6
Accommodations	6
Hull and Deck Information	7
Engine Information	7
DETAILED INFORMATION	8
Notable Features	8
Exclusions	10
Disclaimer	10
PHOTOS	11
7366086_20200214082039009_1_XLARGE	11
7366086_20200214082041696_1_XLARGE	11
7366086_20200214082035683_1_XLARGE	11
7366086_20200214081839459_1_XLARGE	11
7366086_20200214082005348_1_XLARGE	11
7366086_20200214082008928_1_XLARGE	11
7366086_20200214081950234_1_XLARGE	12
7366086_20200214081953478_1_XLARGE	12
7366086_20200214082013962_1_XLARGE	12
7366086_20200214082025287_1_XLARGE	12
7366086_20200214082029218_1_XLARGE	12
7366086_20200214081854791_1_XLARGE	12
7366086_20200214081943287_1_XLARGE	13
7366086_20200214081946598_1_XLARGE	13

7366086_20200214082032283_1_XLARGE	13
7366086_20200214081755290_1_XLARGE	13
7366086_20200214081815465_1_XLARGE	13
7366086_20200214081723343_1_XLARGE	13
7366086_20200214081819622_1_XLARGE	14
7366086_20200214081823210_1_XLARGE	14
7366086_20200214081834781_1_XLARGE	14
7366086_20200214081843211_1_XLARGE	14
7366086_20200214081736177_1_XLARGE	14
7366086_20200214081804686_1_XLARGE	14
7366086_20200214081801623_1_XLARGE	15
7366086_20200214081758564_1_XLARGE	15
7366086_20200214081738850_1_XLARGE	15
7366086_20200214081744552_1_XLARGE	15
7366086_20200214081741964_1_XLARGE	15
7366086_20200214081706337_1_XLARGE	15
7366086_20200214081703166_1_XLARGE	16
7366086_20200214081718558_1_XLARGE	16
7366086_20200214081922332_1_XLARGE	16
7366086_20200214081940208_1_XLARGE	16
7366086_20200214081936327_1_XLARGE	16
7366086_20200214081906412_1_XLARGE	16
7366086_20200214081859060_1_XLARGE	17
7366086_20200214081902964_1_XLARGE	17
7366086_20200214081546464_1_XLARGE	17
7366086_20200214081549765_1_XLARGE	17
7366086_20200214081557165_1_XLARGE	17
7366086_20200214081541499_1_XLARGE	17
7366086_20200214081543337_1_XLARGE	18

7366086_20200214081544944_1_XLARGE	18
7366086_20200214081548151_1_XLARGE	18
7366086_20200214081538003_1_XLARGE	18
7366086_20200214081525200_1_XLARGE	18
7366086_20200214081526692_1_XLARGE	18
7366086_20200214081528096_1_XLARGE	19
7366086_20200214081529498_1_XLARGE	19
7366086_20200214081530921_1_XLARGE	19
7366086_20200214081539795_1_XLARGE	19
7366086_20200214081533681_1_XLARGE	19
7366086_20200214081535216_1_XLARGE	19
7366086_20200214081536570_1_XLARGE	20
7366086_20200214081645264_1_XLARGE	20
7366086_20200214081650521_1_XLARGE	20
7366086_20200214081551322_1_XLARGE	20
7366086_20200214081552820_1_XLARGE	20
7366086_20200214081554337_1_XLARGE	20
7366086_20200214081555671_1_XLARGE	21
7366086_20200214081558681_1_XLARGE	21
7366086_20200214081610384_1_XLARGE	21
7366086_20200214081612116_1_XLARGE	21
7366086_20200214081600211_1_XLARGE	21
7366086_20200214081601749_1_XLARGE	21
7366086_20200214081613800_1_XLARGE	22
7366086_20200214081615411_1_XLARGE	22
7366086_20200214081617081_1_XLARGE	22
7366086_20200214081618634_1_XLARGE	22
7366086_20200214081620036_1_XLARGE	22
7366086_20200214081628578_1_XLARGE	22

7366086_20200214081630166_1_XLARGE	23
7366086_20200214081632073_1_XLARGE	23
7366086_20200214081520744_1_XLARGE	23
7366086_20200214081522289_1_XLARGE	23
7366086_20200214081519035_1_XLARGE	23
7366086_20200214081523769_1_XLARGE	23
CONTACTS	24
Contact details	24
Telephones	24
Office hours	24
Address	24

SPECIFICATIONS

Overview

Very nice example of a 49' Gulfstar Motoryacht. Designed by Richard Lazzara she has classic lines and has a real yacht feel with Teak joinery and parkay flooring and more interior space than many 55-60 footers. Three Stateroom vessel with 3 heads and showers. Ready to cruise or live aboard with 4 flat screen TVs, washer dryer combo, full sized refirgerator/freezer, second freezer, full electronics and a walk-in engine room. She boasts a spacious salon with a small sundeck for enjoying a book and a few cocktails.

She is turn key ready for her next voyage

Basic Information

Category: Trawler

Sub Category: Aft Cabin

Model Year: 1988

Year Built: 1988

Country: United States

Fly Bridge: Yes

Dimensions

LOA: 49' 0" (14.94m)

Beam: 15' 1" (4.60m)

Clearance: 17' 0" (5.18m)

Speed, Capacities and Weight

Displacement: 42000 Pounds

Water Capacity: 370 Gallons

Fuel Capacity: 675 Gallons

Accommodations

Total Cabins: 3

Hull and Deck Information

Hull Material: Fiberglass

Engine Information

Engines: 2

Manufacturer: Detroit Diesel

Model: 6V71

Engine Type: Inboard

Fuel Type: Diesel

DETAILED INFORMATION

Notable Features

- Full size refrigerator/freezer new 1/19
- Detroit exhaust system rebuilt including new elbows
- New engine hoses
- Separate self contained heating system
- Spare Props
- 4 new batteries
- New davit wench
- New water heater
- New convection oven
- Cable Master

Bridge

- Captains chair
- L-shape seating
- Large pad for relaxing
- Ritchie Compass
- Robertson AP2500 auto pilot
- Garmin GPSmap 740s chartplotter/ GPS
- Simrad R135 rudder indicator
- Anritsu radar
- Standard Horizon Explorer Vhf radio
- Cobra Marine HH500 handheld Vhf radio
- Very clean isinglass enclosure

Salon

- Spacious salon
- Adjoining sundeck
- Plush sofa and reclining armchair
- Wine cooler
- Wet bar
- Flat screen tv and stereo receiver
- Screened salon windows

Galley

- Large spacious counter-top
- Corian sink

- New full sized refrigerator/freezer
- New trash compactor
- New 4 burner electric glass cook top
- Dinette with large I-shaped upholstered seating
- Flat Screen TV

Moving fore stepping down a few steps into the companionway to v-berth and head there is the following:

- New convection oven
- Microwave
- 3.2 cubic foot freezer
- Washer/dryer combo, Malber WD 800

Day Head

- Entry door off companionway and entry door to v-berth
- Separate shower stall
- Sink
- Electric vacu-flush head

V-berth

- Nicely appointed
- Center-line queen w/storage underneath
- Large hanging locker
- Two storage lockers
- Anchor locker access

Guest stateroom

- Guest stateroom is mid ship aft of galley to port
- Companionway leading aft has plenty of storage lockers
- Built in futon like couch that pulls out as a double bed
- Large hanging locker
- Lots of storage
- En-suite head w/ shower stall

Master Stateroom

- Full beam master
- Large dresser and vanity
- L-shaped seating
- Center-line queen bed
- 3 hanging locker

- Flat screen TV
- En-suite head w/separate shower stall and electric vacu-flush head

Engine Room

- Walk-in engine room
- Engine access also available from galley sole
- Diapers under engines are very clean
- Hot-water heater
- Onan 20kw Generator w/ 4,556 hours
- Fuel filter system

Exclusions

Owner's personal belongings.

Disclaimer

The Company offers the details of this vessel or yacht in good faith but cannot guarantee or warrant the accuracy of this information nor warrant the condition of the vessel. A buyer should instruct his representatives, agents, or his surveyors, to investigate such details as the buyer desires validated. This vessel or yacht is offered subject to prior sale, price change, or withdrawal without notice.

PHOTOS

7366086_20200214082039009_1_XLARGE



7366086_20200214082041696_1_XLARGE



7366086_20200214082035683_1_XLARGE



7366086_20200214081839459_1_XLARGE



7366086_20200214082005348_1_XLARGE



7366086_20200214082008928_1_XLARGE



7366086_20200214081950234_1_XLARGE



7366086_20200214081953478_1_XLARGE



7366086_20200214082013962_1_XLARGE



7366086_20200214082025287_1_XLARGE



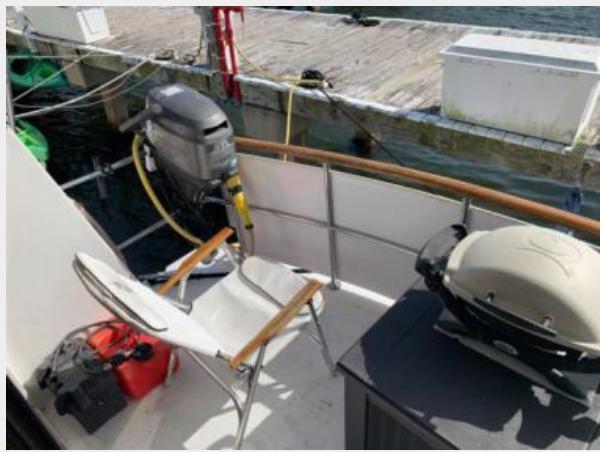
7366086_20200214082029218_1_XLARGE



7366086_20200214081854791_1_XLARGE



7366086_20200214081943287_1_XLARGE



7366086_20200214081946598_1_XLARGE



7366086_20200214082032283_1_XLARGE



7366086_20200214081755290_1_XLARGE



7366086_20200214081815465_1_XLARGE



7366086_20200214081723343_1_XLARGE



7366086_20200214081819622_1_XLARGE



7366086_20200214081823210_1_XLARGE



7366086_20200214081834781_1_XLARGE



7366086_20200214081843211_1_XLARGE



7366086_20200214081736177_1_XLARGE



7366086_20200214081804686_1_XLARGE



7366086_20200214081801623_1_XLARGE



7366086_20200214081758564_1_XLARGE



7366086_20200214081738850_1_XLARGE



7366086_20200214081744552_1_XLARGE



7366086_20200214081741964_1_XLARGE



7366086_20200214081706337_1_XLARGE



7366086_20200214081703166_1_XLARGE



7366086_20200214081718558_1_XLARGE



7366086_20200214081922332_1_XLARGE



7366086_20200214081940208_1_XLARGE



7366086_20200214081936327_1_XLARGE



7366086_20200214081906412_1_XLARGE



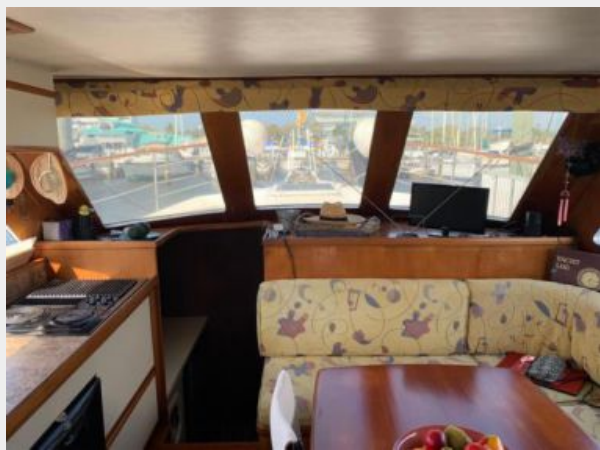
7366086_20200214081859060_1_XLARGE



7366086_20200214081902964_1_XLARGE



7366086_20200214081546464_1_XLARGE



7366086_20200214081549765_1_XLARGE



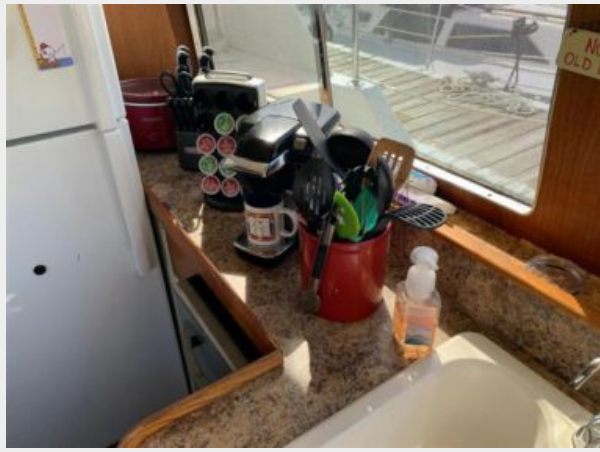
7366086_20200214081557165_1_XLARGE



7366086_20200214081541499_1_XLARGE



7366086_20200214081543337_1_XLARGE



7366086_20200214081544944_1_XLARGE



7366086_20200214081548151_1_XLARGE



7366086_20200214081538003_1_XLARGE



7366086_20200214081525200_1_XLARGE



7366086_20200214081526692_1_XLARGE



7366086_20200214081528096_1_XLARGE



7366086_20200214081529498_1_XLARGE



7366086_20200214081530921_1_XLARGE



7366086_20200214081539795_1_XLARGE



7366086_20200214081533681_1_XLARGE



7366086_20200214081535216_1_XLARGE



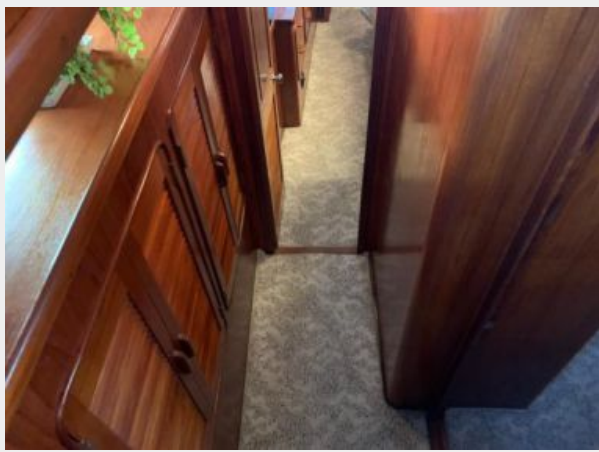
7366086_20200214081536570_1_XLARGE



7366086_20200214081645264_1_XLARGE



7366086_20200214081650521_1_XLARGE



7366086_20200214081551322_1_XLARGE



7366086_20200214081552820_1_XLARGE



7366086_20200214081554337_1_XLARGE



7366086_20200214081555671_1_XLARGE



7366086_20200214081558681_1_XLARGE



7366086_20200214081610384_1_XLARGE



7366086_20200214081612116_1_XLARGE



7366086_20200214081600211_1_XLARGE



7366086_20200214081601749_1_XLARGE



7366086_20200214081613800_1_XLARGE



7366086_20200214081615411_1_XLARGE



7366086_20200214081617081_1_XLARGE



7366086_20200214081618634_1_XLARGE



7366086_20200214081620036_1_XLARGE



7366086_20200214081628578_1_XLARGE



7366086_20200214081630166_1_XLARGE



7366086_20200214081632073_1_XLARGE



7366086_20200214081520744_1_XLARGE



7366086_20200214081522289_1_XLARGE



7366086_20200214081519035_1_XLARGE



7366086_20200214081523769_1_XLARGE



CONTACTS

Andrey Shestakov, leading yacht broker of the sales department of Shestakov Yacht Sales Inc. Shestakov Yacht Sales Inc., the official representative of the Miami/Fort Lauderdale FL headquarters.

Contact details

Email: andrey@shestakovyachtsales.com

Web: shestakovyachtsales.com/en/

Telephones

USA: +1(954)274-4435

Office hours

Monday – Saturday: **9:00 - 21:00** EDT

Sunday: **closed**

Address



Harbour Towne Marina, 850 NE 3rd St,
STE 213, Dania, FL 33004