

CONCH PEARL — TREWORGY



Судостроитель: TREWORGY

Год постройки: 1988

Модель: Шхуна

Цена: ЦЕНА ЯХТЫ ПО ЗАПРОСУ

Местонахождение: United States

Длина общая: 57' 0" (17.37m)

Ширина: 16' 0" (4.88m)

Макс. осадка: 6' 11" (2.11m)

Крейс. скорость: 7 Kts. (8 MPH)

Макс. скорость: 11 Kts. (13 MPH)

Купить **Conch Pearl — TREWORGY** а также выбрать подходящую вам яхту из нашего каталога яхт вам поможет опытный яхтенный брокер Андрей Шестаков. На сегодняшний день компания **Shestakov Yacht Sales Inc.** имеет большое количество яхт в собственном списке продаж, а также тесно сотрудничает со всеми крупными яхтенными производителями по всему миру.

Для того чтобы купить яхту **Conch Pearl — TREWORGY** а также проконсультироваться по любому вопросу связанному с покупкой, продажей, чартером яхт позвоните по телефону **+7(918)465-66-44**.

ОГЛАВЛЕНИЕ

ОГЛАВЛЕНИЕ	2
ХАРАКТЕРИСТИКИ	6
Обзор	6
Основная информация	6
Размеры	6
Скорость, вместимость и масса	6
Размещение	6
Корпус и палуба	7
Информация о двигателе	7
ПОДРОБНОЕ ОПИСАНИЕ	8
Interior Layout	8
Exterior Layout	8
Galley	9
Electronics and Navigation Equipment	9
Electrical System	9
Deck Equipment	10
Sails & Rigging	10
Mechanical Equipment and Engine Details	11
Other Features	11
Safety Equipment	12
Exclusions	12
Исключения	12
Отказ от ответственности	12
ФОТОГРАФИИ	13
P1060874	13
P1060875	13
Conch Pearl moored at Sand Key	13
Conch Pearl undersail stbd side	13

P1060877	13
Conch Pearl undersail port side	13
P1060879	14
P1060880	14
P1060881	14
P1060882	14
P1060883	14
P1060885	14
P1060886	15
P1060887	15
P1060888	15
P1060890	15
P1060891	15
P1060892	15
P1060893	16
P1060894	16
P1060895	16
P1060896	16
P1060897	16
P1060898	16
P1060899	17
P1060900	17
P1060901	17
P1060902	17
P1060903	17
P1060904	17
P1060906	18
P1060905	18
P1060907	18

P1060908	18
P1060909	18
P1060910	18
P1060911	19
P1060913	19
P1060914	19
P1060915	19
P1060916	19
P1060917	19
P1060918	20
P1060919	20
P1060922	20
P1060921	20
P1060923	21
P1060924	21
P1060925	21
P1060926	21
P1060928	22
P1060927	22
P1060929	22
P1060930	22
P1060931	23
P1060932	23
P1060933	23
P1060934	23
P1060936	24
P1060937	24
P1060938	24
P1060939	24

P1060940	24
P1060941	24
P1060942	25
P1060943	25
P1060946	25
P1060945	25
P1060947	26
P1060948	26
P1060949	26
P1060950	26
P1060951	27
КОНТАКТЫ	28
Контактная информация	28
Телефоны	28
Время работы	28
Адрес	28

ХАРАКТЕРИСТИКИ

Обзор

Very rarely does a commercial vessel of this exceptional caliber ever come on to the market. Truly turn-key, always maintained with an open checkbook policy. So much love and attention to all the little details. This stout passage-maker is not to be missed! Recent inspection in 2019. COI for 36 passengers day sail and 12 passengers overnight. She's even maintained a steady annual charter with a well known youth organization.

Основная информация

Тип судна: Шхуна

Модельный год: 1988

Год постройки: 1988

Страна: United States

Размеры

Длина общая: 57' 0" (17.37m)

Ширина: 16' 0" (4.88m)

Макс. осадка: 6' 11" (2.11m)

Скорость, вместимость и масса

Крейс. скорость: 7 Kts. (8 MPH)

Макс. скорость: 11 Kts. (13 MPH)

Водоизмещение: 90000 Pounds

Вместимость воды: 240 Gallons

Объем топливного бака: 500 Gallons

Размещение

Всего кают: 3

Спальные места: 12

Всего ком. состава: 2

Корпус и палуба

Материал корпуса: Steel

Информация о двигателе

Двигатели: 1

Производитель: Caterpillar

Модель: 3208-N

Тип двигателя: Inboard

Тип топлива: Diesel

ПОДРОБНОЕ ОПИСАНИЕ

Interior Layout

The aft pilothouse has wrap around tempered glass windows allowing captain and crew a 360 view. There are doors on either side of the pilothouse allowing for a quick access to the decks. All electronics mechanical controls are all at arms reach.

A large midship Bomar hatch ensures easy access to the main cabin salon. Immediately to port are 4 single berths, all with new fire retardant mattresses in 2020. Forward port salon consists of the u-shaped dinette which comfortably seats six. The dinette converts to a double berth. Above is a drop down single berth. All the way forward of the salon through a water tight hatch is the forward stateroom. There are 3 more berths and an enclosed head. Other features include a fast deployed escape ladder to the forward deck, storage cabinets and reading lights. Aft of the salon to the starboard is the well-equipped galley. Some appointments include gas stove and oven, stainless steel sink, cold plate refrigerator and abundant storage.

Going through another door aft of the salon, is the clean and orderly engine room. This bright well lit compartment is insulated by both heat and sound with a heavy duty sound shield barrier. The dependable CAT 3208 Naturals have always been sought after as a simple non-complicated engine to take you the distance. Stainless steel hand rails surround the engine making it a safe passage through underway. The stand up engine room is well laid out and all equipment is easily reached making maintenance a pleasure.

Aft of the engine room through another door is the aft cabin. The cabin features two more berths, one double and one single. In between the berths is the aft head with sink, vanity and teak accent throughout.

Forward of the aft cabin through a privacy curtain is the raised pilothouse. A central classic ships steering wheel with a large ritchie compass, abundant electronics & mechanical gauges provide the captain and crew with a wealth of information ensuring a safe passage.

Exterior Layout

Your first impression standing dockside is that of a capable stout cruising vessel ready to take you to any exotic port. The gleaming white paint, stainless steel stanchions, and teak accent molding make her one of the prettiest schooners on the Eastern Seaboard.

The vessel is easily boarded from the midship boarding gate. By water a custom dive/boarding ladder is lowered from the port midship. You get an immediate sense of safety and security with the nonskid exterior sole, high safety life lines, and numerous stainless steel rails around all deck hatches. Other deck highlights include several fiberglass storage boxes and lots of on deck seating for all passengers to enjoy the voyage.

Galley

- Cold plate refrigerator & freezer
- Dickson 3 burner gas stove top & oven
- (2) propane cylinders
- Magic Chef microwave oven
- Stainless steel sink with pullout spray nozzle
- Filtered water spigot
- Numerous custom mug holders
- Teak storage cabinets with drawers
- Cutting board brackets
- Wine glass racks
- Numerous custom storage shelves & bins
- Water heater
- Pressurized water system

Electronics and Navigation Equipment

- Robertson autopilot
- 6" Ritchie compass
- Standard Horizon VHF radio
- Raymarine fathometer
- Hailer mode on VHF w/external speaker
- Carson underwater hailer
- ACR EPIRB
- Garmin GPS Map 740
- Rudder dial indicator
- Garmin GPS Map 741XS
- Icom M506 VHF Radio

Electrical System

- Phazor 8 KW generator - 758 hours
- (2) 50 AMP shore power cord
- AC & DC Distribution panels
- (4) 8D Gel batteries
- (1) 8D Gel battery for Windlass
- (3) 8D Gel batteries

- (1) 12 V group 24 battery for generator
- (1) 12V group 24 battery for dive compressor
- Emergency light battery
- 2000 W Inverter
- (2) 50 AMP Battery chargers
- (3) Battery switches
- Battery isolators

Deck Equipment

- West Marine 11'5" Dinghy w/ 9.9 2-stroke Mercury
- Ideal windless
- 110lb Bruce anchor
- 250' - 3/8" High tinsel chain
- 2nd Lewmar anchor
- 2nd 250' chain
- (2) 10 Person life floats
- (5) Fiberglass deck storage boxes
- 4' high safety cables around entire deck
- Custom 9 step aluminum dive ladder
- (4) Engine room air intake vents midship deck
- Throwable life ring
- Large aft deck drain scuppers
- Port & starboard pilothouse wing sliding doors
- Man overboard marker buoy
- Midship boarding gate
- Aft deck Bomar hatch
- Large forward deck escape hatch
- Safety rails around forward hatch
- All decks painted white nonskid
- (2) Bow 14" Cleats, (2) Midship 14" cleats
- Cabin intake air vents
- (2) 14" Stern cleats
- Aft deckhouse solar vent
- (2) Midship 14" cleats
- Midship LED deck flood lights

Sails & Rigging

- Main Sail - 2 years old
- Fore Main - 2 years old
- Head Sail
- Standing rigging all new - 2019

Mechanical Equipment and Engine Details

- (1) 16,000 BTU Air condition
- (1) 12,000 BTU Air condition
- Fire Boy fire suppression system
- Vast inventory of spare parts
- Duel main engine racor fuel filters
- Generator racor fuel filter
- Groco raw water sea strainers
- (4) Bilge pumps
- Engine alarm
- Emergency engine stop
- Fresh water cooling system
- Electric head
- Thermal & acoustical insulation
- Lube oil storage & transfer system
- Extra propeller
- Hydraulic steering

Other Features

- New aft air condition - 2019
- New standing rigging - 2019
- All new fire retardant mattresses - 2020
- New sail covers - 2019
- Rebuilt transmission - 2018
- New engine alternator - 2019
- Bottom painted - 2019
- Coast Guard inspected - 2019
- New 250' anchor chain - 2019

Safety Equipment

- (40) Type 1 Adult life jackets
- (4) Type 1 Childs life jackets

Exclusions

- Personal items
- Dive tanks

Исключения

При продаже яхты исключаются личные вещи владельца.

Отказ от ответственности

Компания предоставляет описание судна или яхты добросовестно, но не может гарантировать точность этой информации, а также не ручается за техническое состояние. Покупатель должен проинструктировать своих агентов или оценщиков исследовать представленную информацию более подробно, по собственному желанию. Продажа судна или яхты, изменение цены или снятие с продажи будет происходить без предварительного уведомления.

ФОТОГРАФИИ

P1060874



P1060875



Conch Pearl moored at Sand Key



Conch Pearl undersail stbd side



Conch Pearl undersail port side



P1060877



P1060879



P1060880



P1060881



P1060882



P1060883



P1060885



P1060886



P1060887



P1060888



P1060890



P1060891



P1060892



P1060893



P1060894



P1060895



P1060896



P1060897



P1060898



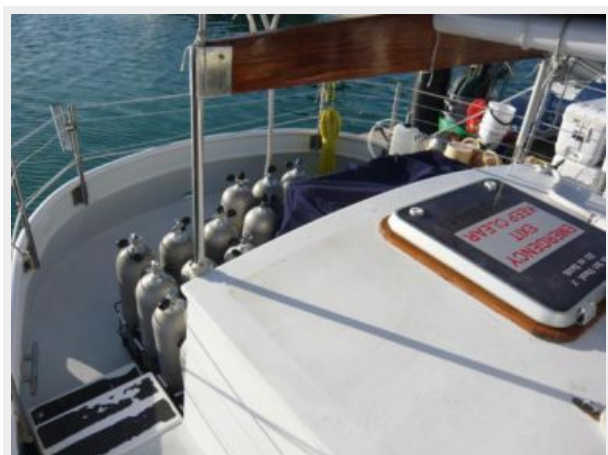
P1060899



P1060900



P1060901



P1060902



P1060903



P1060904



P1060905



P1060906



P1060907



P1060908



P1060909



P1060910



P1060911



P1060913



P1060914



P1060915



P1060916



P1060917



P1060918



P1060919



P1060922



P1060921



P1060923



P1060924



P1060925



P1060926



P1060927



P1060928



P1060929



P1060930



P1060931



P1060932



P1060933



P1060934



P1060936



P1060937



P1060938



P1060939



P1060940



P1060941



P1060942



P1060943



P1060946



P1060945



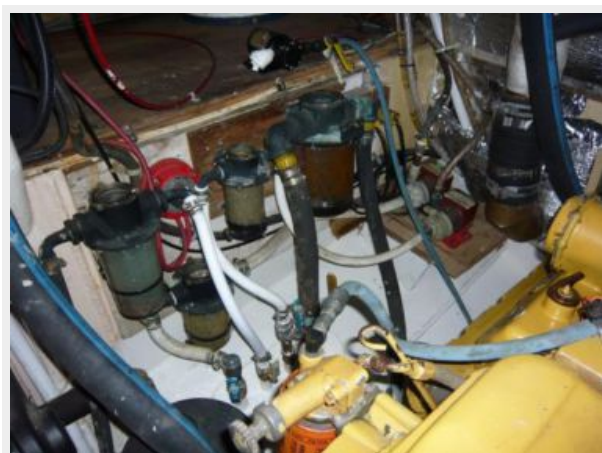
P1060947



P1060948



P1060949



P1060950



P1060951



КОНТАКТЫ

Андрей Шестаков (Andrey Shestakov) – ведущий яхтенный брокер отдела продаж яхт и судов компании Shestakov Yacht Sales Inc. Официальный представитель Shestakov Yacht Sales Inc. для русскоговорящих клиентов в центральном офисе компании в Майами/Форт Лодердейл/Флорида/США.

Контактная информация

Email: **andrey@shestakovyachtsales.com**

Web: shestakovyachtsales.com

Телефоны

Краснодарский край: **+7(918)465-66-44**

США, Майами, Флорида: **+1(954)274-4435**

Время работы

Понедельник – Суббота: **9:00 - 21:00**
EDT

Воскресенье: **Закрето**

Адрес



Harbour Towne Marina, 850 NE 3rd St,
STE 213, Dania, FL 33004