

## NORTHERN LIGHTS — LITTLE HARBOR



**Судостроитель:** LITTLE HARBOR

**Год постройки:** 1972

**Модель:** Крейсерский кеч

**Цена:** ЦЕНА ЯХТЫ ПО ЗАПРОСУ

**Местонахождение:** United States

**Длина общая:** 59' 6" (18.14m)

**Ширина:** 16' 4" (4.98m)

**Мин. осадка:** 5' 10" (1.78m)

**Макс. осадка:** 0' 0" (0.00m)

**Крейс. скорость:** 8 Kts. (9 MPH)

**Макс. скорость:** 10 Kts. (12 MPH)

Купить **NORTHERN LIGHTS — LITTLE HARBOR** а также выбрать подходящую вам яхту из нашего каталога яхт вам поможет опытный яхтенный брокер Андрей Шестаков. На сегодняшний день компания **Shestakov Yacht Sales Inc.** имеет большое количество яхт в собственном списке продаж, а также тесно сотрудничает со всеми крупными яхтенными производителями по всему миру.

Для того чтобы купить яхту **NORTHERN LIGHTS — LITTLE HARBOR** а также проконсультироваться по любому вопросу связанному с покупкой, продажей, чартером яхт позвоните по телефону **+7(918)465-66-44**.

# ОГЛАВЛЕНИЕ

ОГЛАВЛЕНИЕ	2
ХАРАКТЕРИСТИКИ	5
Обзор	5
Основная информация	6
Размеры	6
Скорость, вместимость и масса	6
Размещение	6
Корпус и палуба	7
Информация о двигателе	7
ПОДРОБНОЕ ОПИСАНИЕ	8
ACCOMMODATIONS	8
ENTERTAINMENT EQUIPMENT	9
ELECTRICAL SYSTEM	9
ELECTRONICS AND NAVIGATION EQUIPMENT	10
ENGINE/MECHANICAL EQUIPMENT	10
SAILS AND RIGGING	12
HULL AND CONSTRUCTION	12
DECK AND DECK EQUIPMENT	13
CANVAS	13
SAFETY EQUIPMENT	14
EXCLUSIONS	14
Исключения	14
Отказ от ответственности	14
ФОТОГРАФИИ	15
Main Salon	15
NORTHERN LIGHTS Little Harbor 60 Ketch	15
Main Salon, Fwd	15
Main Salon Dining / Wrap-around Settee	15

Nav Area	15
Owners Cabin	15
En-suite Owners Cabin	16
Owner's Head	16
Guest Cabin	16
En-suite Guest Head	16
Crew Berths	16
Salon Aft	16
Galley	17
Foredeck	17
Mast Base / Coach Roof	17
Coach Roof Hand Rail	17
Stbd. Deck at Night	17
Cockpit, Fwd.	17
Cockpit	18
Cockpit at Night	18
Coach Roof, Stbd.	18
Aft Stbd. Qtr	18
In the Harbor	18
On the Hard	18
Engine Room	19
Engine Room, Fwd.	19
Hull Lines	19
Deck Plan	19
Sail Plan	19
<b>КОНТАКТЫ</b>	<b>20</b>
Контактная информация	20
Телефоны	20
Время работы	20

Адрес

20

---

# ХАРАКТЕРИСТИКИ

---

## Обзор

---

NORTHERN LIGHTS is perhaps best described as a “Modern Classic.” She is the product of two of the most creative and talented names in the boat business of her time, yacht designer Ted Hood and Dutch boat builder, Frans Maas.

Hood’s design was truly innovative both in vision and execution - twin screws for speed and maneuverability under power and a foil shaped centerboard for upwind performance, all together in an offshore sailing vessel with a raised-deck salon and cockpit. Add shoal draft for good measure, and you have NORTHERN LIGHTS, the wonder boat that happily does 8 knots under power and sails upwind with alacrity.

Dutch boat builder Franz Maas’ talent and innovation are evident in NORTHERN LIGHTS’ state-of-the-art for the time Airex-cored fiberglass hull and lovely teak joinery and detail, all of which only begins to paint the picture of this special boat.

That’s not all... NORTHERN LIGHTS has been loved and conscientiously cared for during a long-term ownership and is in very fine condition.

This is one unique and wonderful vessel.

## NOTABLE FEATURES

- Varnished teak
- Dutch workmanship
- Exceptionally strong FG/Airex hull
- Hood Whale body design (seakindly, very heavy displacement, exceptional interior volume/ shoal draft)
- Large raised deckhouse
- Raised cockpit on deck level
- (3) Staterooms with en-suite heads, plus a crew cabin
- Twin diesel engines
- Exceptional fiberglass water and fuel tanks
- Large engine room

## Основная информация

<b>Тип судна:</b> Крейсерский кеч	<b>Подкатегория:</b> Моторный парусник
<b>Модельный год:</b> 1972	<b>Год постройки:</b> 1972
<b>Страна:</b> United States	<b>Кубрик:</b> Да

## Размеры

<b>Длина общая:</b> 59' 6" (18.14m)	<b>Длина по ватерлинии:</b> 48' 4" (14.73m)
<b>Длина палубы:</b> 60' 0" (18.29m)	<b>Ширина:</b> 16' 4" (4.98m)
<b>Мин. осадка:</b> 5' 10" (1.78m)	<b>Макс. осадка:</b> 0' 0" (0.00m)

## Скорость, вместимость и масса

<b>Крейс. скорость:</b> 8 Kts. (9 MPH)	<b>Макс. скорость:</b> 10 Kts. (12 MPH)
<b>Водоизмещение:</b> 100000 Pounds	<b>Вместимость воды:</b> 805 Gallons
<b>Вместимость сточного бака:</b> 150 Gallons	<b>Объем топливного бака:</b> 450 Gallons

## Размещение

<b>Всего кают:</b> 3	<b>Всего коек:</b> 6
<b>Спальные места:</b> 9	<b>Всего ком. состава:</b> 3
<b>Каюты экипажа:</b> 1	<b>Койки экипажа:</b> 2
<b>Спальных мест экипажа:</b> 2	

## Корпус и палуба

---

**Материал корпуса:** Fiberglass

**Материал палубы:** Fiberglass

**Комплектация корпуса:** Centerboard

**Цвет корпуса:** Blue

**Отделка корпуса:** Fiberglass

**Дизайнер корпуса:** Hood/Maas

## Информация о двигателе

---

**Двигатели:** 2

**Производитель:** Perkins

**Модель:** 4-236

**Тип двигателя:** Inboard

**Тип топлива:** Diesel

---

# ПОДРОБНОЕ ОПИСАНИЕ

---

## ACCOMMODATIONS

---

### STATEROOMS

Three staterooms: Master aft and two forward, three en-suite heads, and crew cabin in the forepeak.

- Master stateroom, aft, is full-width and features an en-suite head with shower and tub
- Guest staterooms are forward, port and starboard, each with upper and lower berths. The starboard guest cabin's lower berth converts to a double, and both cabins have en-suite heads with hand-held showers
- Crew quarters are forward in the forepeak with a built-in single berth and a fold-down pipe berth above.

### SALON

- Large, high-backed L-shaped settee to starboard
- Gimballed teak dining table with fiddles and extra leaves
- Ample storage for long passages
- Cushions in the salon are blue Ultrasuede (in good condition)
- Joinerwork is of yacht-quality construction, solid teak and teak plywood, very good condition
- Interior finish is painted overhead, varnished teak, and laminate counters in good condition
- Bulkheads are teak-faced plywood, glass-tabbed to hull and set into deck beams, in very good condition, no signs of movement
- Soles are varnished teak and holly over plywood, in very good condition
- Ventilation and escape routes are very good, through large opening hatches in the main salon and via the companionway
- Nav station to port features a full-sized chart table with storage within and under, and cushioned seating

### GALLEY

The U-shaped galley is located aft and to starboard, open to the main deck, and shares the abundance of light, natural ventilation and visibility of NORTHERN LIGHT's wonderful raised salon.

Galley Equipment Includes:

- Shipmate 3-burner stove with oven and broiler
- Grunert refrigeration, front-loading



- Grunert freezer, top-loading
- Haier microwave oven
- Pressure hot and cold water and large sink

## ENTERTAINMENT EQUIPMENT

---

- Sony CDX-GT200 AM/FM/CD with speakers

## ELECTRICAL SYSTEM

---

### GENERATOR

Northern Lights generator is located in the Engine Room, forward of the starboard engine.

- Model: M753W2.3, S/N: 7532-39860C
- Voltage: 120/240
- kW: 8
- RPM: 1800
- Hrs: 700
  
- Fuel System: Type A1 hose, Racor 500 filter
- Cooling System: Fresh water through heat exchanger
- Sea Strainer: Perko Bronze internal
- Electrical System: 12-volt alternator
- Exhaust System: Raw water through hose and Vetus Waterlock muffler
- Ventilation: Jabsco blowers in engine room
- Drip Pan: Steel

### A/C

- Shore Power, Connections and Cables: (2) Legs Hubble 30A 125V connectors, 30A/125V 50' cordsets
- Distribution Panel: Bass panel circuit breaker panel
- Meters/Polarity Indicators: Polarity Light, volt and ammeters
- Inverter: 2011 Newmar Model 32-2400IC
- Wiring: Marine-grade tinned copper stranded wire

### D/C—12V (Engines & Electronics)

- Batteries: (4) 12-volt batteries
  - (3) 8D for port and starboard engine start and house electronics
  - 6D for generator start
- Alternators (2): Delco-Remy 65 amps on port and starboard engines
- Charger: 2011 Newmar Model PT-40W 95-amp @ 12-volts

- Combiners: Newmar for (3) 8D batteries

### **D/C—32V (House Banks**

- Batteries: (12) 8 volt batteries— series wired in sets of 4 for three 32V banks
- Alternators (2): Leece Neville 115 amps on port and starboard engines
- Charger: Newmar Model 32-2400IC 100-amps @ 32-volts

### **Isolators/Switches/Etc.**

- (6) Perko on/off switches
- (4) Guest on/off switches
- (4) Cole Hersee on/off switches
- Cole Hersee selector switch
- Distribution Panel: Bass panels, circuit breakers
- Meters: Volt and Ammeters; Cruising Equipment Co. E-meter 32-volt system monitor
- Wiring: Marine Grade
- Bonding/Grounding Plate: Dynaplates on port and starboard side bottom aft, common bonding system, corrosion monitor

## **ELECTRONICS AND NAVIGATION EQUIPMENT**

---

- Radios: (2) Icom IC-M80 VHF, Icom IC-M700 SSB
- GPS: Furuno GPS/WAAS at nav station; Raymarine E120 chartplotter at helm
- Radar: Raymarine E120 display with Raymarine RD418HD 4kW digital radome
- Fathometer: Datamarine model 3030, Raymarine i70 (2016)
- Speed/Log: Raymarine i70 Speed (2016)
- Wind: Raymarine i70 Wind (2016)
- Clock/Barometer: Chelsea, brass
- Autopilot: Robertson/Simrad AP26 with rudder position indicator, Simrad model IS15
- Nav lights

## **ENGINE/MECHANICAL EQUIPMENT**

---

Engine room measures 13' X 16'.

- Engines: Twin Perkins, Model: 4-286, 85 hp each, 2,800 rpm
- Fuel System: A1 Hose, (2) Racor 500 filters, shut-offs at filters and manifold
- Cooling System: Fresh water through heat exchangers
- Sea Strainer: Bronze external and (2) Perko internal basket type
- Exhaust System: Raw water cooled through riser and hose to Vernalift mufflers
- Electrical System: Delco Remy 65 amp/12-volt alternators; Leece Neville 115 amp 32 volt
- Ventilation: (4) Jabsco blowers

- Reduction Gear: Borg Warner Velvet Drive 2.10:1, P/model AS671C, S/N 26265; S/model AS771C, S/N 32850
- Engine Beds: F.R.P.
- Drip Pan: F.R.P.: clean with absorbent diapers
- Instruments and Monitoring: VDO gauges
- Controls: Morse single lever, cable, Synchronizer
- Fuel Consumption: 2.6 gals/hour

## RUNNING GEAR

- Shaft: 1 3/4" stainless steel with spurs cutters
- Coupling: Evolution flexible, model EFSC #6
- Stuffing Box: PSS dripless
- Bearings: Cutlass at stuffing boxes and struts
- Strut: Cast S/S
- Propellers: (2) Maxprop 21" (factory reconditioned, 2015)

## STEERING

- Rudder: F.R.P. construction over stainless steel flange and rudderstock
- Skeg: F.R.P.
- Edson wheel, pedestal, chain, cable and quadrant

## AIR CONDITIONING

- (3) Cruisair 12H 12,000 BTU

## PUMPS

- Bilge: (2) Rule 2000 with Groco pneumatic switches in forward port and starboard engine bilges, Rule 3700 secondary in stbd. fwd. engine bilge; Whale gusher 25 manual in cockpit locker. Groco float switch high water alarm
- Freshwater: Flojet 4325-443
- Refrig: Flojet 4325-443
- Misc: Cruisair model PMA1000
- (3) Fuel transfer pumps in manifold
- Magnetek 115v AC waste overboard pump

## ADDITIONAL MECHANICAL EQUIPMENT

- Bow thruster: Vetus 130 kgf/10 hp
- (2) 32-volt Grunert compressors for refrigeration
- Water Heater: Raritan Model 172011; Groco PST-2 expansion tank
- Raritan Atlantis fresh water toilets in stbd. and aft heads
- Raritan electric salt water toilet in port head
- Hood Stoway motor

---

## SAILS AND RIGGING

---

- Spars: Painted aluminum Stoway main mast, mizzen mast and booms, anodized spinnaker pole
- Rod Headstay: Selden Furlex 400S
- Standing Rigging: 1x19 stainless steel wire, stainless steel swaged fittings on mizzen, Norseman stainless steel fittings for main mast, chrome-plated bronze open barrel turnbuckles
- Running Rigging: Stainless steel wire and low-stretch braided halyards and braided sheets and control lines
- Mast Step: On keel, stainless steel fabrication with stainless steel tie rod to deck for main, stainless steel fabrication with same tie rod to deck for mizzen
- Rig: Ketch: I= 67.5', J=24', P=61', E-20', PY=38', EY=12.5'

### Ratings:

- PHRF: Racing 66, Cruising 78
- Bluewater Sailing Club: Racing 66, Cruising 87

### Sails:

- Hood Stoway mainsail (2008)
- Hood mizzen (2008)
- Rouse roller furling genoa
- Hood spinnaker and mizzen staysail
- Hood storm trysail and storm staysail
- Misc. Hood sails

### Winches:

- (2) Barient wire halyard winches on main and mizzen
- (5) 3-speed English line halyard winches on main and mizzen

### In cockpit:

- (2) Barient #36 electric 2-speed, self-tailing
- (2) Barient #28 electric, 2-speed, self-tailing
- (2) Lewmar #55 electric; centerboard wire pennant winch

---

## HULL AND CONSTRUCTION

---

- Hull: Blue Awlgrippped topsides (2015)
- Deck: Awlgrip paint with non-skid (2018/2019)
- Cabin Top: Awlgrip (2019)
- Exterior Teak: Wooded, with (8) coats varnish (2018)

- Bottom: Red
- Keel: Ted Hood “Whale Body”

NORTHERN LIGHTS draws 5'-10" with centerboard up, and 13'-10" with board down. This vessel is well built and well suited to its intended purpose as a bluewater cruiser.

Construction: The hull is hand laid with a layup of 5/8" outer and inner fiberglass skin sandwiching a 3/4" Airex foam core; grounding plate: 1/2 " stainless steel. The deck is conventionally framed of (2) layers plywood (5/8" and 3/8") over timber deck beams finished with (2) layers of 22 oz. glass/epoxy outside. This is very strong construction built to high standards.

- Varnished teak joinerwork throughout
- Centerboard\Trunk: Welded Corten steel encased in glass/epoxy for main centerboard, trunk is F.R.P. reinforced inside with stainless steel
- Deck Hardware: Lewmar main traveler, sheet blocks, and jib turning blocks, Harken jib cars, furling line lead blocks and deck blocks
- Chainplates: Stainless steel bar stock heavily glassed in along hull sides and hanging knees

## DECK AND DECK EQUIPMENT

---

- Stanchions and Lifelines: Stainless steel tube bow rail, stern rail and stanchions, double stainless steel wire lifelines
- Hatches and Portlights: Hood/Mainship stainless steel hatches (1) 32x32 on foredeck, (2) 25x25, (3) 18x14, (3) 20x20; opening ports in hull
- Ground Tackle: Rocna 55kg on bow roller with 200' 1/2" chain; 66 lb. Bruce with 375' 3/4" braided rode and 1" 300' 3-strand in stern lazarette
- Chocks and Cleats: Cast stainless steel
- Anchor Windlasses: Ideal vertical capstan and gypsy, model BHW, S/N H753
- Compass: Kelvin White Danforth Constellation 6" on Edson pedestal
- Propane locker in cockpit with Xintex propane remote solenoid control
- Teak deck chairs

## CANVAS

---

- Sand Sunbrella dodger with clear Lexan panels
- Sand Sunbrella cockpit cushions
- Helm and winch covers
- Gray Sunbrella mizzen sail cover

---

## SAFETY EQUIPMENT

---

- P.F.D.s: (8) Type I adult, (3) Type I child, (3) Type II child, (2) Type III child
- Lifesling and Horseshoes
- Portable Extinguishers: (9) ABC I, (1 in each cabin, head, galley, and 1 by nav station); (1) Halon by nav station, (1) CO2 in engine room
- Fixed Extinguishers: Fireboy Halon 1301, Model 150CG
- Flares
- First Aid Kit: Coastal Marine first aid kit
- Sound Signals: Manual air horn and ship's bell
- Search Light: 12-volt hand-held spot
- Cockpit Drains: Scuppers thru-hose out thru-hulls, aft scupper drain hoses in aft lazarette
- Wooden Plugs: Affixed around each thru-hull
- Sensors/Alarms: Fireboy Xintex S-2A propane fume detector, Fireboy Xintex CO detector in aft cabin, and First Alert in passageway by forward cabins
- Emergency steering: stainless steel tiller in aft lazarette
- Misc: Jack lines, harnesses and tethers
- Storm covers for deckhouse windows

---

## EXCLUSIONS

---

- Artwork and books

---

## Исключения

---

При продаже яхты исключаются личные вещи владельца.

---

## Отказ от ответственности

---

Компания предоставляет описание судна или яхты добросовестно, но не может гарантировать точность этой информации, а также не ручается за техническое состояние. Покупатель должен проинструктировать своих агентов или оценщиков исследовать представленную информацию более подробно, по собственному желанию. Продажа судна или яхты, изменение цены или снятие с продажи будет происходить без предварительного уведомления.

# ФОТОГРАФИИ

Main Salon

NORTHERN LIGHTS Little Harbor 60 Ketch



Main Salon, Fwd



Main Salon Dining / Wrap-around Settee



Nav Area



Owners Cabin



**En-suite Owners Cabin**



**Owner's Head**



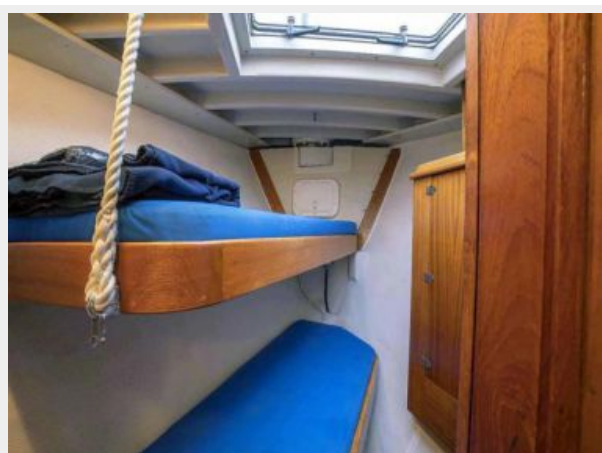
**Guest Cabin**



**En-suite Guest Head**



**Crew Berths**



**Salon Aft**





**Galley**



**Foredeck**



**Mast Base / Coach Roof**



**Coach Roof Hand Rail**



**Stbd. Deck at Night**



**Cockpit, Fwd.**



**Cockpit**



**Cockpit at Night**



**Coach Roof, Stbd.**



**Aft Stbd. Qtr**



**In the Harbor**



**On the Hard**



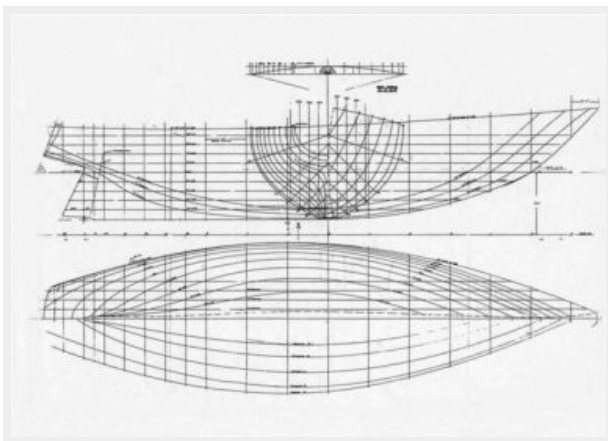
**Engine Room**



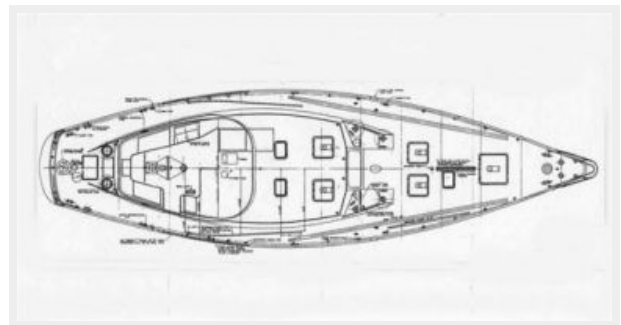
**Engine Room, Fwd.**



**Hull Lines**



**Deck Plan**



**Sail Plan**



# КОНТАКТЫ

---

Андрей Шестаков (Andrey Shestakov) – ведущий яхтенный брокер отдела продаж яхт и судов компании Shestakov Yacht Sales Inc. Официальный представитель Shestakov Yacht Sales Inc. для русскоговорящих клиентов в центральном офисе компании в Майами/Форт Лодердейл/Флорида/США.

## Контактная информация

---

Email: [andrey@shestakovyachtsales.com](mailto:andrey@shestakovyachtsales.com)

Web: [shestakovyachtsales.com](http://shestakovyachtsales.com)

## Телефоны

---

Краснодарский край: **+7(918)465-66-44**

США, Майами, Флорида: **+1(954)274-4435**

## Время работы

---

Понедельник – Суббота: **9:00 - 21:00**  
EDT

Воскресенье: **Закрето**

## Адрес

---



Harbour Towne Marina, 850 NE 3rd St,  
STE 213, Dania, FL 33004