

## DANUSH — BAIA



**Builder:** [BAIA](#)

**Year Built:** 2004

**Model:** Motor Yacht

**Price:** PRICE ON APPLICATION

**Location:** Italy

**LOA:** 80' 0" (24.39m)

**Beam:** 20' 0" (6.10m)

**Min Draft:** 0' 0" (0.00m)

**Max Draft:** 5' 0" (1.52m)

**Cruise Speed:** 38 Kts. (44 MPH)

**Max Speed:** 46 Kts. (53 MPH)

Our experienced yacht broker, Andrey Shestakov, will help you choose and buy a yacht that best suits your needs **DANUSH — BAIA** from our catalogue. Presently, at Shestakov Yacht Sales Inc., we have a wide variety of yachts available on our sale's list. We also work in close contact with all the big yacht manufacturers from all over the world.

If you would like to buy a yacht **DANUSH — BAIA** or would like help answering any questions concerning purchasing, selling or chartering a yacht, please call **+1(954)274-4435**

---

# TABLE OF CONTENTS

---

TABLE OF CONTENTS	2
SPECIFICATIONS	3
Basic Information	3
Dimensions	3
Speed, Capacities and Weight	3
Accommodations	3
Hull and Deck Information	4
Engine Information	4
PHOTOS	5
IMG_6752	5
IMG_6753	5
IMG_6754	5
IMG_6755	5
IMG_6756	5
IMG_6758	5
IMG_6955	6
IMG_6760	6
IMG_6956	6
IMG_6957	6
IMG_6958	6
IMG_6959	6
CONTACTS	7
Contact details	7
Telephones	7
Office hours	7
Address	7

---

# SPECIFICATIONS

---

## Basic Information

---

**Category:** Motor Yacht

**Model Year:** 2004

**Year Built:** 2004

**Refit Year:** 2015

**Country:** Italy

## Dimensions

---

**LOA:** 80' 0" (24.39m)

**LWL:** 0' 0" (0.00m)

**LOD:** 0' 0" (0.00m)

**Beam:** 20' 0" (6.10m)

**Min Draft:** 0' 0" (0.00m)

**Max Draft:** 5' 0" (1.52m)

**Clearance:** 0' 0" (0.00m)

**MFG Length:** 0' 0" (0.00m)

## Speed, Capacities and Weight

---

**Cruise Speed:** 38 Kts. (44 MPH)

**Cruise Speed Range:** 350

**Max Speed:** 46 Kts. (53 MPH)

**Water Capacity:** 317.0064624 Gallons

**Fuel Capacity:** 1585.032312 Gallons

**Fuel Consumption:** 158.5032312 Gallons

## Accommodations

---

**Total Cabins:** 3

**Sleeps:** 7

**Crew Cabin:** 1

**Crew Sleeps:** 2

---

## Hull and Deck Information

---

**Hull Material:** GRP

**Deck Material:** Teak

**Hull Configuration:** Planing

---

## Engine Information

---

**Engines:** 2

**Manufacturer:** MTU

**Model:** 16V 2000 M91

**Engine Type:** Inboard

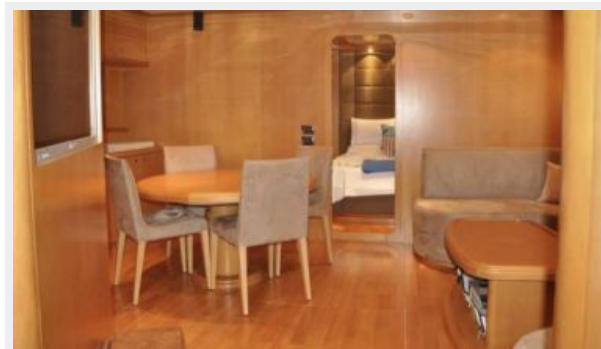
**Fuel Type:** Diesel

# PHOTOS

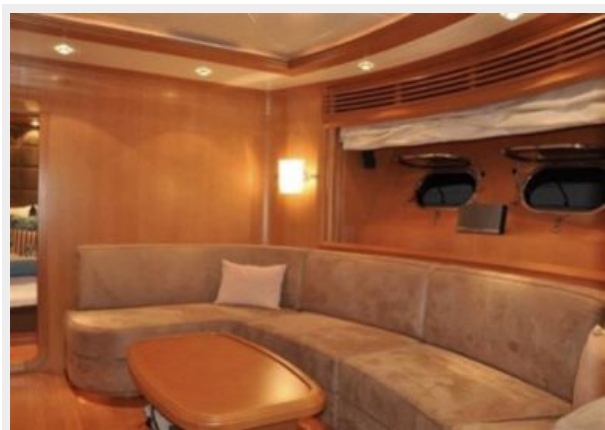
IMG\_6752



IMG\_6753



IMG\_6754



IMG\_6755



IMG\_6756



IMG\_6758



IMG\_6760



IMG\_6955



IMG\_6956



IMG\_6957



IMG\_6958



IMG\_6959



# CONTACTS

---

Andrey Shestakov, leading yacht broker of the sales department of Shestakov Yacht Sales Inc. Shestakov Yacht Sales Inc., the official representative of the Miami/Fort Lauderdale FL headquarters.

## Contact details

---

Email: [andrey@shestakovyachtsales.com](mailto:andrey@shestakovyachtsales.com)

Web: [shestakovyachtsales.com/en/](http://shestakovyachtsales.com/en/)

## Telephones

---

USA: +1(954)274-4435

## Office hours

---

Monday – Saturday: **9:00 - 21:00** EDT

Sunday: **closed**

## Address

---



Harbour Towne Marina, 850 NE 3rd St,  
STE 213, Dania, FL 33004