

DON'T STOP BELIEVIN — VIKING



Builder: VIKING

Year Built: 2006

Model: Catamaran

Price: PRICE ON APPLICATION

Location: United States

LOA: 68' 8" (20.93m)

Beam: 19' 4" (5.89m)

Min Draft: 5' 5" (1.65m)

Max Draft: 0' 0" (0.00m)

Cruise Speed: 35 Kts. (40 MPH)

Max Speed: 41 Kts. (47 MPH)

Our experienced yacht broker, Andrey Shestakov, will help you choose and buy a yacht that best suits your needs **Don't Stop Believin — VIKING** from our catalogue. Presently, at Shestakov Yacht Sales Inc., we have a wide variety of yachts available on our sale's list. We also work in close contact with all the big yacht manufacturers from all over the world.

If you would like to buy a yacht **Don't Stop Believin — VIKING** or would like help answering any questions concerning purchasing, selling or chartering a yacht, please call **+1(954)274-4435**

TABLE OF CONTENTS

TABLE OF CONTENTS	2
SPECIFICATIONS	5
Overview	5
Basic Information	5
Dimensions	5
Speed, Capacities and Weight	5
Accommodations	6
Hull and Deck Information	6
Engine Information	6
DETAILED INFORMATION	7
Layout	7
Salon	7
Decor	7
Galley/Dinette	7
Companionway	8
Master Stateroom	8
Master Stateroom Head	8
Forward Stateroom	9
Forward Stateroom Head	9
Starboard Stateroom	9
Starboard Stateroom Head	9
Crew Stateroom	9
Crew Stateroom Head	10
Cockpit	10
Flybridge	10
Electronics	11
Tuna Tower	12
Tower Electronics	12

Engine Room and Mechanical Equipment	12
Deck & Exterior	13
Remakrs	13
Exclusions	13
Disclaimer	13
PHOTOS	15
Profile	15
Profile	15
Exterior	15
Profile	15
Exterior	16
Bow	16
Exterior	16
Cockpit	16
Cockpit	16
Cockpit	16
Flybridge	17
Flybridge	17
Flybridge	17
Flybridge	17
Salon	17
Salon	17
Salon	18
Galley	18
Dinette	18
Galley	18
Master Stateroom	18
Master Stateroom	18
Master Stateroom Head	19

Master Stateroom Head	19
Forward Stateroom	19
Forward Stateroom	19
Forward Stateroom Head	20
Forward Stateroom	20
Starboard Stateroom	20
Starboard Stateroom	20
Starboard Stateroom Head	21
Crew Stateroom	21
Crew Stateroom Head	21
Layout	21
CONTACTS	22
Contact details	22
Telephones	22
Office hours	22
Address	22

SPECIFICATIONS

Overview

"Don't Stop Believin" was ordered from the factory with every possible option including the High Performance Engine package allowing speeds to 41 knots, this amazing Viking 68' is loaded and in beautiful condition.

Basic Information

Category: Catamaran

Model Year: 2007

Year Built: 2006

Country: United States

Vessel Top: Full / Tuna Tower

Fly Bridge: Yes

Cockpit: Yes

Dimensions

LOA: 68' 8" (20.93m)

LWL: 0' 0" (0.00m)

LOD: 0' 0" (0.00m)

Beam: 19' 4" (5.89m)

Min Draft: 5' 5" (1.65m)

Max Draft: 0' 0" (0.00m)

Clearance: 0' 0" (0.00m)

MFG Length: 0' 0" (0.00m)

Speed, Capacities and Weight

Cruise Speed: 35 Kts. (40 MPH)

Max Speed: 41 Kts. (47 MPH)

Gross Tonnage: 96 Pounds

Water Capacity: 300 Gallons

Holding Tank: 200 Gallons

Fuel Capacity: 2880 Gallons

Accommodations

Total Cabins: 4

Total Berths: 6

Sleeps: 8

Total Heads: 4

Hull and Deck Information

Hull Material: Fiberglass

Deck Material: Fiberglass

Hull Configuration: Modified V-Hull

Hull Color: WHITE

Hull Finish: Fiberglass

Hull Designer: VIKING

Engine Information

Engines: 2

Manufacturer: MTU

Model: 16V2000

Engine Type: Inboard

Fuel Type: Diesel

DETAILED INFORMATION

Layout

"Don't Stop Believin" features a 4 stateroom, 4 head layout including crew. Her main salon and galley are all on the same level and the crew quarters can be accessed via either main companionway or engine room.

Salon

- Upgraded sofa with storage inside
- Cocktail table, hi low
- Kenmore clear ice maker
- Upgraded Viking home theater stereo system
- Salon door with electric door opener
- Dimmers on overhead lights
- Teak valences
- 46" Samsung TV with pop up lift, 2013
- Watermaker remote start panel
- Amtico wood sole throughout
- Custom teak shelves by salon door
- Upright electrical panel
- Moritz alarm panel
- Tank Sentry tank level indicator
- Upgraded headliner, 2017

Decor

- Wrapped hatch carpet
- Custom wallpaper
- Baby Ostrich custom headliner
- (2) Bar stools with Ostrich backs

Galley/Dinette

- Granite countertops
- Stainless under mount sink
- Garbage disposal
- (2) under counter refrigerators, (4) drawers
- Under counter freezer, (2) drawers

- Icemaker in freezer drawer
- Trash compactor
- Miele cooktop with vent, 2016
- Miele under counter oven, 2016
- Convection microwave/Miele oven, 2016
- Teak dinette table
- Abundant storage throughout galley and below dinette seating
- Amtico wood sole
- Walk in pantry just forward of galley for additional storage with custom shelving
- (2) bar stools aft side galley island

Companionway

- Vertical teak strips between wall panels
- Linen closet
- Washer and dryer
- Central vac
- Amtico wood sole

Master Stateroom

- Upgraded king mattress
- Dimmers on overhead AC lights
- Safe under bed
- 42" Samsung TV, 2013
- Teak valence above bed
- Teak end tables
- Teak top of entry credenza
- His and hers hanging lockers

Master Stateroom Head

- Mirror ceiling
- Custom frameless shower door hardware
- Brass faucet, shower fixtures and door
- Mirror around upper vanity insert
- Linen closet
- Amtico wood sole
- Granite vanity counter top
- Headhunter head system

Forward Statroom

- Island queen berth with storage below
- Upgraded mattress
- Reading lights
- Mirrored forward bulkhead
- Abundant drawer and shelf storage
- Overhead hatch with shade
- Hanging locker
- Dimmers on overhead low voltage AC lights
- Samsung 24" flat screen TV, 2013
- Private access to VIP head

Forward Stateroom Head

- Mirror ceiling
- Mirror around upper vanity insert
- Brass fixtures
- Granite vanity counter top
- Amtico wood sole
- Headhunter head system

Starboard Stateroom

- Upper and lower twin berths with storage below lower bunk
- Dimmer on overhead low-voltage AC lights
- Teak credenza with drawer storage
- Hanging locker
- 22" Samsung TV
- Access to guest head

Starboard Stateroom Head

- Brass fixtures
- Amtico wood sole
- Mirror around upper vanity insert
- Granite vanity counter top
- Headhunter head system

Crew Stateroom

- Upper and Lower berths with storage below lower bunk
- Dimmers on overhead low-voltage lights
- Samsung 22" flat screen TV, 2013
- Hanging locker
- Crew engine room access door

Crew Stateroom Head

- Amtico wood sole
- Mirrored ceiling
- Brass fixtures
- Corian vanity counter top
- Headhunter head

Cockpit

- Raised mezzanine seating
- Mezzanine cushions, 2017
- Cockpit air conditioning, 2016
- Teak sole
- Oversized fish box with sump box
- Transom box plumbed as livewell
- Tuna tubes, custom built into gunnel
- Bait freezer
- Refrigerated bait box
- Refrigerated drink box
- Teak fighting chair with rocket launcher
- Clearing rod holders on tower legs and house haunches
- Port and starboard gaff lockers
- Transom door
- Eskimo ice machine into fish box
- Stereo speakers
- Access to engine room
- Tackle drawer storage
- Cockpit cover
- Cockpit fly cover
- DC electric reel outlets
- Transom hawse pipes
- Electric opening salon door

Flybridge

- Centerline helm console
- Single lever controls with bow thruster buttons in handles
- Teak helm pod
- Teak helm chairs with footrests
- Flybridge air conditioning
- 3 sided acrylic enclosure, 2017
- Extra chest freezer
- Refrigerated drink box
- Fusion stereo system with amplifier
- Hatch over cockpit access
- Aft rail rocket launcher
- Molded in tri color lighting below hardtop
- Teak decking on helm step
- Drop down electronics box
- MTU main engine displays
- MTU back up controls
- 12V outlet in radio box
- Removable flybridge jump seat backrest
- Generator remote start and stop panels
- Molded in US#9 Miya Epoch teaser reels
- Fresh water spigot
- Bow thruster buttons

Electronics

In 2013 "Don't Stop Believin" received a substantial electronics upgrade.

- Furuno Navnet 3D MF processor, 2013
- Furuno 25kw radar, 2013
- (2) Furuno 19" color LCD displays, 2013
- Furuno navnet black box sounder, 2013
- Garmin 7215 GPS/plotter, 2013
- Furuno Ethernet hub, 2013
- KVH Sat TV system
- FLIR camera, 2013
- Furuno autopilot
- Twin Icom VHF radios
- Garmin GX M51 weather/XM/audio receiver, 2013
- Furuno RD30 digital display
- ACR spotlight
- Furuno AIS receiver

Tuna Tower

- Plam Beach Towers construction
- Molded hardtops and standing platform
- Molded in teaser reel box
- Aft, forward and side molded in spreader lights
- Molded in NAV lights
- Track to track enclosure installed
- Controls and steering
- (8) rod rocket launcher, aft rail
- Triple spreader and center outriggers
- Clearing rod holders on tower legs
- Molded in lighting below hardtops, tri color
- (3) sided acrylic enclosure

Tower Electronics

- Furuno 8" MFD display, GPS/plotter/sounder/radar
- Icom VHF radio
- Compass

Engine Room and Mechanical Equipment

- Twin MTU 16V2000 M93, 2400HP engines, 4600 hours.
- Twin Onan 27.5kw generators
- Twin engine driven power steering pumps
- Sea Recovery 1200GPD watermaker
- Dual plumbed fuel transfer pumps
- Dual plumbed air conditioning sea water pumps
- Fuel polishing system
- Head Hunter Mach V fresh water pump
- Oil change system, plumbed to cockpit
- Delta T air intake vents
- Automatic fire system
- Shelves over both generators for storage
- Tool boxes
- Crew stateroom access door
- Stereo speakers
- Emergency engine room pick ups
- Engine room cameras
- AC/DC lighting throughout
- Dripless shaft seals with spares

- Port and starboard Charles ISO booster transformers
- Eskimo ice machine

Deck & Exterior

- Custom extra large fuel capacity of 2700 gallons for a total of 4 fiberglass tanks
- Custom port and starboard fuel filling ports
- Prop pockets
- Bottom stripped and barrier coated in 2017
- 1500lb davit, 2016
- Underwater exhaust system
- Bow pulpit with anchor chute
- Lewmar V4 anchor windlass
- Anchor/storage locker just aft of windlass
- Fortress anchor and rode
- Aluminum bow rail
- Bow thruster
- Snow white hull and topside color
- Blue bottom paint with blue accent stripe
- Under water lights
- Fresh water spigot in anchor locker

Remakrs

"Don't Stop Believin" is the best deal today on the Viking 68' Market with her 2400hp High Performance MTU16V2000CR Engine package, totally loaded with every option including full fish rigging, eskimo ice machine, cockpit coolers and drink boxes, transom live well, tuna tubes, full Tuna Tower, Veem 5 bladed props, 3 CCT cameras, FLIR camera, cockpit misters, and sparkling condition!

Captain maintained since new.

Exclusions

Owner's personal belongings.

Disclaimer

The Company offers the details of this vessel or yacht in good faith but cannot guarantee or warrant the accuracy of this information nor warrant the condition of the vessel. A buyer should instruct his representatives, agents, or his surveyors, to investigate such details as the buyer

desires validated. This vessel or yacht is offered subject to prior sale, price change, or withdrawal without notice.

PHOTOS

Profile



Profile



Exterior

Profile



Exterior



Bow



Exterior



Cockpit



Cockpit



Cockpit



Flybridge



Flybridge



Flybridge



Flybridge



Salon



Salon



Salon



Galley



Dinette



Galley



Master Stateroom



Master Stateroom



Master Stateroom Head



Master Stateroom Head



Forward Stateroom



Forward Stateroom



Forward Stateroom



Forward Stateroom Head



Starboard Stateroom



Starboard Stateroom



Starboard Stateroom Head



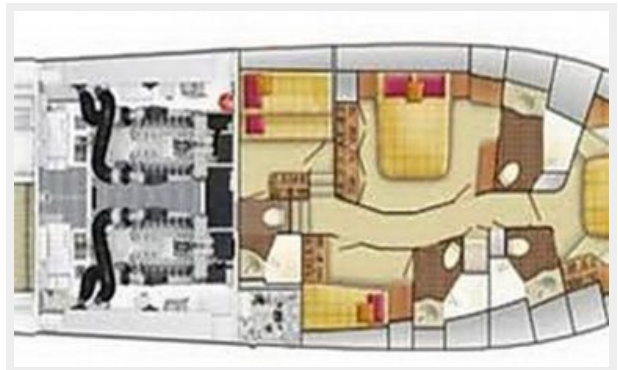
Crew Stateroom



Crew Stateroom Head



Layout



CONTACTS

Andrey Shestakov, leading yacht broker of the sales department of Shestakov Yacht Sales Inc. Shestakov Yacht Sales Inc., the official representative of the Miami/Fort Lauderdale FL headquarters.

Contact details

Email: andrey@shestakovyachtsales.com

Web: shestakovyachtsales.com/en/

Telephones

USA: +1(954)274-4435

Office hours

Monday – Saturday: **9:00 - 21:00** EDT

Sunday: **closed**

Address



Harbour Towne Marina, 850 NE 3rd St,
STE 213, Dania, FL 33004