

MERRILY — CUSTOM



Builder: CUSTOM

Year Built: 1980

Model: Center Cockpit

Price: PRICE ON APPLICATION

Location: United States

LOA: 40' 0" (12.19m)

Beam: 12' 6" (3.81m)

Max Draft: 6' 0" (1.83m)

Cruise Speed: 6.9 Kts. (8 MPH)

Max Speed: 8 Kts. (9 MPH)

Our experienced yacht broker, Andrey Shestakov, will help you choose and buy a yacht that best suits your needs **Merrily — CUSTOM** from our catalogue. Presently, at Shestakov Yacht Sales Inc., we have a wide variety of yachts available on our sale's list. We also work in close contact with all the big yacht manufacturers from all over the world.

If you would like to buy a yacht **Merrily — CUSTOM** or would like help answering any questions concerning purchasing, selling or chartering a yacht, please call **+1(954)274-4435**

TABLE OF CONTENTS

TABLE OF CONTENTS	2
SPECIFICATIONS	5
Overview	5
Basic Information	5
Dimensions	5
Speed, Capacities and Weight	6
Accommodations	6
Hull and Deck Information	6
Engine Information	6
DETAILED INFORMATION	7
Beautiful 1980 Frederick Amor 40'	7
Exclusions	8
Disclaimer	8
PHOTOS	9
DSC05855	9
DJI_0090	9
DSC05860	9
DSC05863	9
DSC05865	10
DSC05864	10
DSC05869	10
DSC05870	10
DSC05874	10
DSC05872	10
DSC05879	11
DSC05882	11
DSC05885	11
DSC05892	11

DSC05898	12
DSC05896	12
DSC05901	12
DSC05906	12
DSC05909	12
DSC05911	12
DSC05915	13
DSC05917	13
DSC05918	13
DSC05919	13
DSC05921	13
DSC05922	13
DSC05923	14
DSC05925	14
DSC05928	14
DSC05932	14
DSC05933	15
DSC05934	15
DSC05935	15
DSC05938	15
DSC05939	16
DSC05940	16
DSC05941	16
DSC05947	16
DSC05948	17
DSC05949	17
DSC05965	17
DSC05953	17
DSC05968	18

CONTACTS	19
-----	-----
Contact details	19
-----	-----
Telephones	19
-----	-----
Office hours	19
-----	-----
Address	19
-----	-----

SPECIFICATIONS

Overview

Generous amount of headroom (6'-4" plus), great for taller sailors Great access to engine. Horizontal shaft placement ensures maximum efficiency. Cruising speed reached at 24hp Bluewater cruising size storage tanks for diesel, water, and holding 14 operable port lights and 3 large operable ceiling hatches allow for amazing air circulation and natural light.

Current Owner has lived aboard the vessel for three years at Shilshole Bay Marina and has shown that the vessel systems have been stress tested and improved for user convenience.

Transferable slip with Shilshole Marina liveaboard status (currently a three year waiting list) available to new Owner

Boat was built in the Frederick Amor Shipyard in British Columbia. One of her sister ships sailed the NW Passage in 2009 (see links below). This boat was originally commissioned to sail to Australia, while the original Owner ran out of time to make the journey, the boat was built to handle the voyage.

Being built for Canada weather, the vessel is very well insulated. Minimal condensation even in the most extreme of temperatures. Great advantage for living aboard.

Basic Information

Category: Center Cockpit

Sub Category: Cutter

Model Year: 1980

Year Built: 1980

Country: United States

Cockpit: Yes

Dimensions

LOA: 40' 0" (12.19m)

Beam: 12' 6" (3.81m)

Max Draft: 6' 0" (1.83m)

Speed, Capacities and Weight

Cruise Speed: 6.9 Kts. (8 MPH)

Max Speed: 8 Kts. (9 MPH)

Displacement: 25000 Pounds

Water Capacity: 125 Gallons

Holding Tank: 30 Gallons

Fuel Capacity: 250 Gallons

Accommodations

Total Cabins: 4

Total Berths: 5

Sleeps: 7

Total Heads: 1

Hull and Deck Information

Hull Material: Fiberglass

Deck Material: Fiberglass

Hull Finish: Aluminum

Engine Information

Engines: 2

Manufacturer: Perkins Diesel

DETAILED INFORMATION

Beautiful 1980 Frederick Amor 40'

Number of Single Berths: 2
 Number of Double Berths: 3 (two in cabin, one at dinette)
 Number of Cabins: 2 (Forward and Aft)
 Number of Heads: 1

accommodations 6'-4"+ of standing headroom
 Pressurized hot and cold water system
 Stainless steel shower faucet, sump assembly at head.
 Stainless steel hot water Tank (6 gal). 110v or engine operated
 Electronic Head (Raritan Elegance, 2019) with raw water and fresh water capability
 Projector and Screen setup for movies, shows, etc.
 Smart phone and remote controlled LED strip lighting

Light and heavy duty topside covers designed for all-year livaboard access.

galleyequipment Deep Double stainless steel sinks with retractable faucet (2019)
 Gimballed 3 burner stove/oven (Force 10 63341, 2019)
 Nova Kool Stacked Refrigerator/Freezer with 6.8 Cu ft total volume, 2.5 Cu ft Freezer (RFU 6800 AC/DC capability, 2019)
 Above deck rail mounted propane grill

electronicsandnavgear Radar - Garmin
 Depthsounder
 Garmin Chartplotter
 Helm Compass
 VHF
 GPS

Rudder indicator (Raritan Ruddermaster, 2019)

electricalsystem 30 amp shore power inlet and cord
 Dual battery banks with 2,250 combined amp hour capacity
 Inverter/Charger (Xantrex 2000 Watt). Inverts up to 15 amp at 120v
 Dual bilge sump pump setup for redundancy (with additional manual pump backup)
 160 Watts of rigid mounted solar panels (2 total).
 12v Electric windlass with foot switch

salesrigging 2 speed Self tailing winches
 5 total sails-Mainsail (good condition) with three reefing points
 Yankee Jib (good condition)
 130% Genoa (like new condition)
 staysail jib (like new condition)
 Storm trysail (like new condition)
 Roller furling jib
 Downwind Whisker Pole
 Sails trimmed and reefed from safety of the cockpit, with mast mounted winches as backup

Inflatable Tender/Dinghy (10'-2" Eagle 310 2014)Aft dinghy davits support raising and lowering of fully loaded tender (with engine mounted)

Aluminum hard bottom4 stroke 15hp electric start outboard (2008, with major overhaul in 2019)Remote wheel steering, throttle, and start

50lb Northill anchor and 40lb Danforth350ft 3/8" chain on main anchor300ft Spare nylon rode250 ft 1" diameter 3 strand spare nylon rode

additional

2 LPG tanks (one 20lb, one 5lb). Lazarette Sized to accept up to two 40lb tanks

Winter location Bremerton Washington

Summer location Seattle Washington:

Transferable slip with Shilshole Marina liveaboard status (currently a three year waiting list) available to new Owner

Exclusions

Owner's personal belongings.

Disclaimer

The Company offers the details of this vessel or yacht in good faith but cannot guarantee or warrant the accuracy of this information nor warrant the condition of the vessel. A buyer should instruct his representatives, agents, or his surveyors, to investigate such details as the buyer desires validated. This vessel or yacht is offered subject to prior sale, price change, or withdrawal without notice.

PHOTOS

DSC05855



DJI_0090



DSC05860



DSC05863



DSC05864



DSC05865



DSC05869



DSC05870



DSC05872



DSC05874



DSC05879



DSC05882



DSC05885



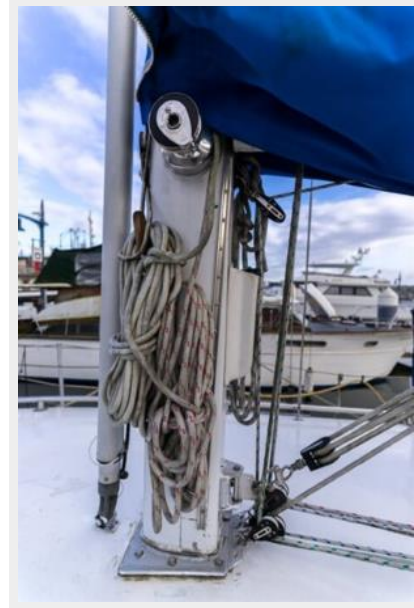
DSC05892



DSC05896



DSC05898



DSC05901



DSC05906



DSC05909



DSC05911



DSC05915



DSC05917



DSC05918



DSC05919



DSC05921



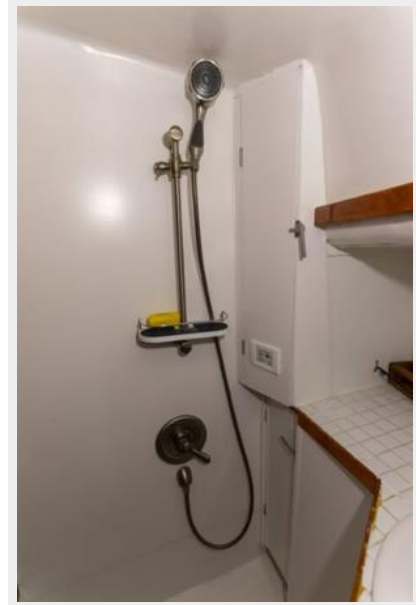
DSC05922



DSC05923



DSC05925



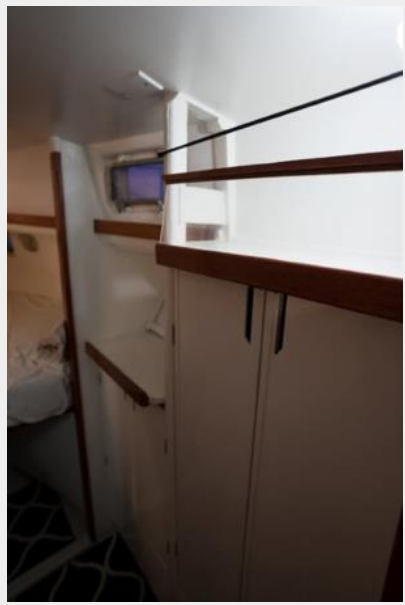
DSC05928



DSC05932



DSC05933



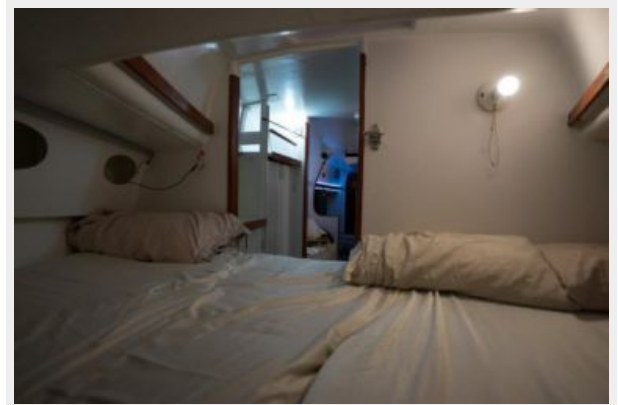
DSC05934



DSC05935



DSC05938



DSC05939



DSC05940



DSC05941



DSC05947



DSC05948



DSC05949



DSC05965



DSC05953



DSC05968



CONTACTS

Andrey Shestakov, leading yacht broker of the sales department of Shestakov Yacht Sales Inc. Shestakov Yacht Sales Inc., the official representative of the Miami/Fort Lauderdale FL headquarters.

Contact details

Email: andrey@shestakovyachtsales.com

Web: shestakovyachtsales.com/en/

Telephones

USA: +1(954)274-4435

Office hours

Monday – Saturday: **9:00 - 21:00** EDT

Sunday: **closed**

Address



Harbour Towne Marina, 850 NE 3rd St,
STE 213, Dania, FL 33004