

SUPEARLATIVE — PEARL MOTOR YACHTS



Судостроитель:

PEARL MOTOR YACHTS

Год постройки: 2012

Модель: Моторная яхта

Цена: ЦЕНА ЯХТЫ ПО ЗАПРОСУ

Местонахождение: United States

Длина общая: 60' 0" (18.29m)

Ширина: 16' 4" (4.98m)

Макс. осадка: 5' 0" (1.52m)

Крейс. скорость: 26 Kts. (30 MPH)

Макс. скорость: 32 Kts. (37 MPH)

Купить **Supearlative — PEARL MOTOR YACHTS** а также выбрать подходящую вам яхту из нашего каталога яхт вам поможет опытный яхтенный брокер Андрей Шестаков. На сегодняшний день компания **Shestakov Yacht Sales Inc.** имеет большое количество яхт в собственном списке продаж, а также тесно сотрудничает со всеми крупными яхтенными производителями по всему миру.

Для того чтобы купить яхту **Supearlative — PEARL MOTOR YACHTS** а также проконсультироваться по любому вопросу связанному с покупкой, продажей, чартером яхт позвоните по телефону **+7(918)465-66-44**.

ОГЛАВЛЕНИЕ

ОГЛАВЛЕНИЕ	2
ХАРАКТЕРИСТИКИ	5
Обзор	5
Основная информация	5
Размеры	5
Скорость, вместимость и масса	5
Размещение	5
Корпус и палуба	6
Информация о двигателе	6
ПОДРОБНОЕ ОПИСАНИЕ	7
Principal Features	7
Deck	7
Stainless Steel Fittings	7
Aft Cockpit	8
Upper Helm and Flybridge	8
Salon	8
Salon Helm	9
Galley and Appliances	9
Master Aft Stateroom	10
En Suite Master	10
VIP Forward Stateroom	10
Port and Starboard Guest Staterooms	11
Forward Guest Heads	11
Mechanical	11
Safety Equipment	12
Исключения	12
Отказ от ответственности	12
ФОТОГРАФИИ	13

7355010_20200206084610010_1_XLARGE	13
7355010_20200203083841317_1_XLARGE	13
3900215_20120418103622_2_XLARGE	13
3900215_20120418103515_4_XLARGE	13
7355010_20200203083837802_1_XLARGE	14
3900215_20120418103622_1_XLARGE	14
7355010_20200203083838918_1_XLARGE	14
3900215_20120418103516_2_XLARGE	14
7355010_20200203083840081_1_XLARGE	14
7355010_20200203083835488_1_XLARGE	14
7355010_20200203082827613_1_XLARGE	15
7355010_20200203083836607_1_XLARGE	15
7355010_20200203083834629_1_XLARGE	15
7355010_20200206084609388_1_XLARGE	15
3900215_20120418103515_3_XLARGE	16
3900215_20120418103621_3_XLARGE	16
7355010_20200203082826556_1_XLARGE	16
7355010_20200203083833770_1_XLARGE	16
7355010_20200203082825379_1_XLARGE	16
3900215_20120418103621_4_XLARGE	16
7355010_20200203083828777_1_XLARGE	17
7355010_20200203083816257_1_XLARGE	17
7355010_20200203082824457_1_XLARGE	17
7355010_20200203082823517_1_XLARGE	17
7355010_20200203083807906_1_XLARGE	17
7355010_20200203083806157_1_XLARGE	17
7355010_20200203083810807_1_XLARGE	18
7355010_20200203083809463_1_XLARGE	18
3900215_20120418103858_1_XLARGE	18

7355010_20200203083814120_1_XLARGE	18
7355010_20200203083817760_1_XLARGE	19
7355010_20200203083812333_1_XLARGE	19
7355010_20200203082822165_1_XLARGE	19
7355010_20200204074830425_1_XLARGE	19
7355010_20200204074823173_1_XLARGE	20
7355010_20200203083844861_1_XLARGE	20
7355010_20200203083825286_1_XLARGE	20
7355010_20200206084610542_1_XLARGE	20
7355010_20200203083823761_1_XLARGE	20
7355010_20200203083843389_1_XLARGE	20
7355010_20200203083821194_1_XLARGE	21
7355010_20200203083819487_1_XLARGE	21
7355010_20200204114948283_1_XLARGE	21
7355010_20200203083822247_1_XLARGE	21
7355010_20200204114948916_1_XLARGE	22
7355010_20200204114949484_1_XLARGE	22
7355010_20200204114949991_1_XLARGE	22
7355010_20200203083802476_1_XLARGE	22
7355010_20200203083759045_1_XLARGE	23
7355010_20200204074826736_1_XLARGE	23
КОНТАКТЫ	24
Контактная информация	24
Телефоны	24
Время работы	24
Адрес	24

ХАРАКТЕРИСТИКИ

Обзор

"Supearlative" a 2012 Pearl 60 exudes style and sophistication. The stunning interior is finished in American walnut joinery with black granite and Avonite surfaces, contemporary fittings and almond leather upholstery. This luxury aft cabin motor yacht is remarkably spacious with four lavish cabins and exhilarating performance. Her power comes from 2 Volvo Penta D13 800hp engines producing a top speed of 32 knots.

Основная информация

Тип судна: Моторная яхта	Подкатегория: Flybridge
Модельный год: 2012	Год постройки: 2012
Страна: United States	Открытая палуба мостика: Да

Размеры

Длина общая: 60' 0" (18.29m)	Ширина: 16' 4" (4.98m)
Макс. осадка: 5' 0" (1.52m)	

Скорость, вместимость и масса

Крейс. скорость: 26 Kts. (30 MPH)	Макс. скорость: 32 Kts. (37 MPH)
Вместимость воды: 154 Gallons	Объем топливного бака: 616 Gallons

Размещение

Всего кают: 4	Всего коек: 6
Спальные места: 8	Всего ком. состава: 3

Корпус и палуба

Материал корпуса: Fiberglass

Информация о двигателе

Двигатели: 2

Производитель: Volvo Penta

Модель: D13

Тип двигателя: Inboard

Тип топлива: Diesel

ПОДРОБНОЕ ОПИСАНИЕ

Principal Features

- Contemporary American Walnut Joinery
- Asea AC converter Model AC12
- 13KW Generator
- Bow Thruster 9hp
- Stern Thruster
- Gamin Series Chart Plotter, radar and GPS
- 32" LCD TV
- Leather Upholstery in Salon and Flybridge Bimini
- Fixed Solid Teak Aft Deck Table
- Dual Station Garmin Colour
- Dishwasher
- Flybridge tonneau cover
- Electronic engine controls

Deck

- Hydraulically operated bathing platform
- Electrically operated aft deck sunroof system
- Teak laid aft deck and bathing platform
- Moulded non-slip deck with recessed area for coach roof sun cushions
- Fitted heavy duty stainless steel rubbing strake with white nylon carrier
- Hot and cold transom shower
- Water and fuel fillers
- Full set of IMCO navigation lights

Stainless Steel Fittings

- Twin rail pulpit
- Flybridge hand rails
- Electric anchor winch
- Stainless steel 30kg bruce anchor with 60m chain
- Stainless steel bow roller for automatic launch and recovery
- Hydraulic remote control passarelle
- Twin stainless steel bow and stern cleats
- Twin midship and platform cleats
- Heavy duty forward fairleads

- Heavy duty aft fairleads
- Bathing ladder
- Stainless steel horn

Aft Cockpit

- Cushioned seating incorporating storage lockers
- Teak laid steps to flybridge and bathing platform
- Recessed high and low level waterproof lighting
- Manual bilge pumps
- Twin cockpit doors
- Hinged dodger lids containing capstan mooring winches, cleats and fender bins
- Hinged locker containing fuel shut-off levers, fire extinguishers and engine room fire extinguisher override.

Upper Helm and Flybridge

- Twin helm seat w/ cup holders
- Laminated high gloss instrument panel and carbon fiber steering wheel
- Hydraulic steering
- Cableless electronics single lever engine controls
- Full engine instrumentation autopilot Garmin GHC 10
- Digital speed and depth gauges - depth - Garmin GMI 10
- VHF radio
- Controls for trim tabs, anchor winch and Jepsco searchlight
- Switches for bilge pumps, horn and navigation lights
- High speed magnetic Ritchie compass
- Upholstered seating area with storage
- Stainless steel framed smoked acrylic wind deflector
- Waterproof speakers for hi-fi system with remote control for Sony system
- Helm position indicator
- Foldaway table
- Barbecue and sink unit with drink Vitrifrido fridge below
- Twin Garmin GPS map 5012 Displays
- Bow/ Stern thruster controls
- Yacht controller

Salon

- Electrically operated stainless steel framed patio door to aft deck

- Entrance stairway with acrylic handrail and step treads
- U shaped settee with low level coffee table
- Halogen lighting incorporated into suede-lines ceiling panels
- Fitted CD/radio with concealed speakers
- Electrically operated forward side windows
- Bonded windscreen and windows
- Electrical control panel including controls for AC/DC and generator
- Semicircular dinette seating area and fixed table
- Wood slat blinds fitted to aft salon windows
- Sony Bravia rise/fall flat screen TV

Salon Helm

- Electric side windows
- Twin helm seat
- Generator start/stop switch
- Laminated high glass instrument panel and carbon fiber steering wheel
- Hydraulic carbon fiber steering wheel
- Cableless electronic single lever engine controls
- Full Volvo engine instrumentation
- Digital speed and Garmin GMI 10 depth gauges
- VHF radio Garmin GHS 10i
- Controls for trim tabs, anchor, winch and bow thruster/stern thruster
- Switches for windscreen wipers, bilge pumps, horn and navigation lights
- High speed magnetic compass
- Helm position indicator
- Garmin GPS map 5012
- Autopilot Garmin GHC 10
- Sony stereo

Galley and Appliances

- Comprehensively fitted galley
- Integrated four-plate halogen stove top with combination Neff microwave/conventional oven and electric grill
- Domestic fridge freezer
- Dedicated crockery and cutlery storage
- Uniquely designed built-in storage cupboards and drawers
- Sink and drainer with hot and cold mixer tap
- Concealed lighting
- Extractor fan

- Pearl crockery and cutlery set
- Neff dishwasher

Master Aft Stateroom

- 6'6" x 5'6" bed with fully sprung mattress
- Halogen lighting
- Twin reading lights
- Dressing table
- Twin hanging wardrobe
- Seating area
- Opening escape hatch to aft deck
- High level air-conditioning soffit
- Stainless steel opening portholes with fly screens and blinds
- Mirrors

En Suite Master

- Fitted electric marine toilet
- Wash basin with mixer taps and storage cupboard below
- Separate shower with acrylic door and automatic pump-out
- Extractor fan
- Mirror
- Stainless steel opening porthole with blind

VIP Forward Stateroom

- Double bed with fully sprung mattress with storage below
- Halogen lighting
- Twin reading lights
- Twin hanging wardrobe
- Side vanity units
- High level air-conditioning soffit
- Opening deck hatch and stainless steel portholes with flyscreen and blind
- Forward bulkhead mirror

Port and Starboard Guest Staterooms

- Two single berths
- Halogen lighting and individual reading lights
- Shelved storage cupboard
- Neff combo washer/dryer (starboard cabin only)
- Stainless steel opening porthole with flyscreen and blind
- Bedside unit with storage drawers
- Mirror

Forward Guest Heads

- Fitted electric marine toilet
- Wash basin with mixer taps and storage cupboard below
- Separate shower with acrylic door and automatic pump-out
- Extractor fan
- Stainless steel opening porthole with flyscreen and blind
- Mirrored cabinet
- Halogen lighting

Mechanical

- Soundproofed engine bay with high power extractor fans
- Water-cooled exhaust with underwater outlets
- Integrally bonded fore and aft bulkheads
- P brackets and four-blade propellers constructed from nickel aluminum bronze
- Balanced rudders
- Cathodic protection
- Stern gear engines, tanks are electrically bonded

- 700 liters capacity water tanks including calorifier
- Automatic pressurized water system with pump and filter
- Water tank contents gauge
- Holding tanks with contents gauges and pump-out from deck outlet or through hull
- Single skin fitting waster outlet system

- Twin enamelled aluminum fuel tanks total capacity 2800 liters
- High capacity water separators and fuel filters
- Emergency fuel shut-off levers in aft cockpit

- 13 KVA generator providing 240v supply
- Polarity check system, power points in aft stateroom, salon, galley, forward stateroom and

forward guest cabins

- 220/240v shore power supply

Safety Equipment

- Automatic fire extinguishers in engine and generator room with auto shut down and alarm indicator panel on helm position
- Hand-operated fire extinguishers in all cabins, galley and on deck
- Automatic bilge pumps with manual override in forward bilge, aft bilge and engine room
- Externally operated manual bilge pumps in aft cockpit

Исключения

При продаже яхты исключаются личные вещи владельца.

Отказ от ответственности

Компания предоставляет описание судна или яхты добросовестно, но не может гарантировать точность этой информации, а также не ручается за техническое состояние. Покупатель должен проинструктировать своих агентов или оценщиков исследовать представленную информацию более подробно, по собственному желанию. Продажа судна или яхты, изменение цены или снятие с продажи будет происходить без предварительного уведомления.

ФОТОГРАФИИ

7355010_20200206084610010_1_XLARGE



7355010_20200203083841317_1_XLARGE



3900215_20120418103622_2_XLARGE



3900215_20120418103515_4_XLARGE



7355010_20200203083837802_1_XLARGE



3900215_20120418103622_1_XLARGE



7355010_20200203083838918_1_XLARGE



3900215_20120418103516_2_XLARGE



7355010_20200203083835488_1_XLARGE



7355010_20200203083840081_1_XLARGE



7355010_20200203082827613_1_XLARGE



7355010_20200203083836607_1_XLARGE



7355010_20200203083834629_1_XLARGE



7355010_20200206084609388_1_XLARGE



3900215_20120418103515_3_XLARGE

3900215_20120418103621_3_XLARGE



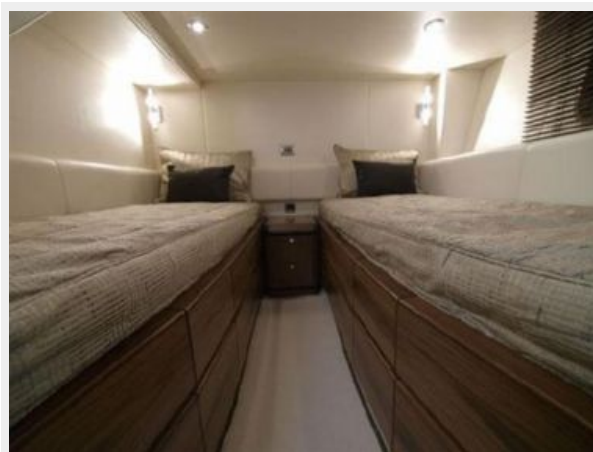
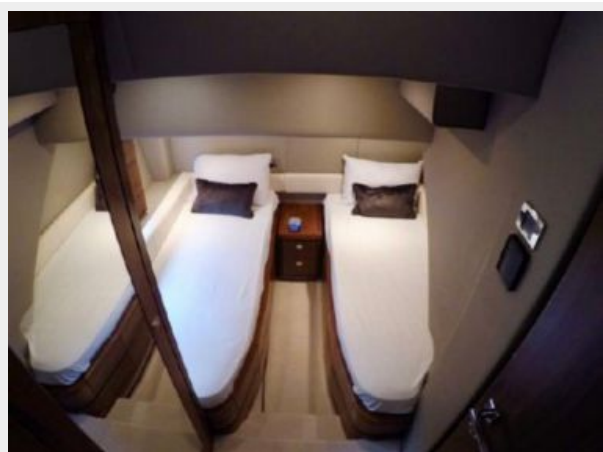
7355010_20200203082826556_1_XLARGE

7355010_20200203083833770_1_XLARGE



7355010_20200203082825379_1_XLARGE

3900215_20120418103621_4_XLARGE



7355010_20200203083828777_1_XLARGE



7355010_20200203083816257_1_XLARGE



7355010_20200203082824457_1_XLARGE



7355010_20200203082823517_1_XLARGE



7355010_20200203083807906_1_XLARGE

7355010_20200203083806157_1_XLARGE



7355010_20200203083810807_1_XLARGE



7355010_20200203083809463_1_XLARGE



3900215_20120418103858_1_XLARGE



7355010_20200203083814120_1_XLARGE



7355010_20200203083817760_1_XLARGE



7355010_20200203083812333_1_XLARGE



7355010_20200203082822165_1_XLARGE



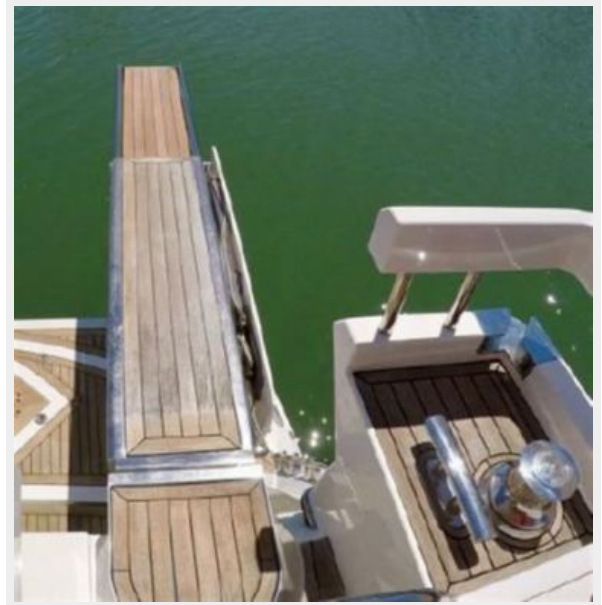
7355010_20200204074830425_1_XLARGE



7355010_20200204074823173_1_XLARGE



7355010_20200203083844861_1_XLARGE



7355010_20200203083825286_1_XLARGE



7355010_20200206084610542_1_XLARGE



7355010_20200203083823761_1_XLARGE



7355010_20200203083843389_1_XLARGE



7355010_20200203083821194_1_XLARGE

7355010_20200203083819487_1_XLARGE



7355010_20200204114948283_1_XLARGE

7355010_20200203083822247_1_XLARGE



7355010_20200204114948916_1_XLARGE



7355010_20200204114949484_1_XLARGE



7355010_20200204114949991_1_XLARGE



7355010_20200203083802476_1_XLARGE



7355010_20200203083759045_1_XLARGE



7355010_20200204074826736_1_XLARGE



КОНТАКТЫ

Андрей Шестаков (Andrey Shestakov) – ведущий яхтенный брокер отдела продаж яхт и судов компании Shestakov Yacht Sales Inc. Официальный представитель Shestakov Yacht Sales Inc. для русскоговорящих клиентов в центральном офисе компании в Майами/Форт Лодердейл/Флорида/США.

Контактная информация

Email: andrey@shestakovyachtsales.com

Web: shestakovyachtsales.com

Телефоны

Краснодарский край: **+7(918)465-66-44**

США, Майами, Флорида: **+1(954)274-4435**

Время работы

Понедельник – Суббота: **9:00 - 21:00**
EDT

Воскресенье: **Закрыто**

Адрес



Harbour Towne Marina, 850 NE 3rd St,
STE 213, Dania, FL 33004