

PRINCESS Y85 — PRINCESS YACHTS



Builder: PRINCESS YACHTS

Year Built: 2019

Model: Motor Yacht

Price: PRICE ON APPLICATION

Location: Monaco

LOA: 86' 0" (26.20m)

Beam: 20' 9" (6.30m)

Max Draft: 5' 10" (1.77m)

Max Speed: 33 Kts. (38 MPH)

Our experienced yacht broker, Andrey Shestakov, will help you choose and buy a yacht that best suits your needs **Princess Y85 — PRINCESS YACHTS** from our catalogue. Presently, at Shestakov Yacht Sales Inc., we have a wide variety of yachts available on our sale's list. We also work in close contact with all the big yacht manufacturers from all over the world.

If you would like to buy a yacht **Princess Y85 — PRINCESS YACHTS** or would like help answering any questions concerning purchasing, selling or chartering a yacht, please call **+1(954)274-4435**

TABLE OF CONTENTS

TABLE OF CONTENTS	2
SPECIFICATIONS	4
Overview	4
Basic Information	6
Dimensions	6
Speed, Capacities and Weight	6
Accommodations	7
Hull and Deck Information	7
Engine Information	7
PHOTOS	8
y85-exterior-white-hull-01	8
y85-exterior-white-hull-12	8
y85-exterior-white-hull-03	8
y85-exterior-cockpit-bar	8
y85-exterior-cockpit-seating	8
y85-exterior-flybridge-2	8
y85-exterior-flybridge-bar-2	9
y85-exterior-flybridge-bar	9
y85-exterior-flybridge-helm-2	9
y85-exterior-flybridge-seating	9
y85-interior-helm-walnut-satin	9
y85-interior-saloon-walnut-satin	9
y85-interior-saloon-seating-area-walnut-satin	10
y85-interior-dining-area-walnut-satin	10
y85-interior-galley-bar-blinds-closed-walnut-satin	10
y85-interior-galley-walnut-satin	10
y85-interior-owners-stateroom-sofa-walnut-satin	10
y85-interior-owners-stateroom-walnut-satin	10

y85-interior-owners-dressing-table-walnut-satin	11
y85-interior-owners-bathroom-walnut-satin	11
y85-interior-port-guest-cabin-walnut-satin	11
y85-interior-forward-bathroom-walnut-satin	11
y85-interior-forward-guest-cabin-walnut-satin	11
y85-interior-port-cabin-bathroom-walnut-satin	11
y85-interior-starboard-guest-cabin-walnut-satin	12
y85-interior-starboard-cabin-bathroom-walnut-satin	12
y85-interior-crew-mess-detail	12
y85-interior-crew-mess	12
y85-interior-starboard-guest-cabin-with-pullman-bunk-walnut-satin	12
CONTACTS	13
Contact details	13
Telephones	13
Office hours	13
Address	13

SPECIFICATIONS

Overview

STABILISATION

- Sleipner Hydraulic system (consisting of separate engine driven hydraulic pumps on each engine with cross connections allowing any system to be supplied with hydraulic power from either engine) and incorporating SPS92/VF1350 vector fin stabilizer system. When underway fins are driven by engine powered hydraulic pumps and at zero speed by a generator powered electric motor. A hydraulic sternthruster (350 KgF) is fitted as well as an hydraulic bowthruster and anchor windlass(s).
- This system is designed to provide roll control at speeds above 12 knots as well as zero speed stabilisation. Bow and Stern thrusters feature fully proportional speed control. When the main engines are turned off the hydraulics are powered by an electric motor (2 x 27.5kW generators are recommended)

HULL COLOUR

- White (with dark grey water line, black antifouling, hull & bathing platform fendering is white with stainless steel insert)

INTERIOR FURNITURE

- Walnut interior wood Gloss finish (galley and wheelhouse floors are walnut as standard)

LAYOUT

- Starboard cabin to have double berth conversion with powered sliding mechanism on inboard berth
- Bidet in Master Stateroom bathroom

DECK HARDWARE

- GRP flybridge hardtop (carbon/composite construction) including dimmable lighting
- Flybridge crane (550 Kg SWL)
- Third station controls in cockpit (engine controls, thruster controls and engine emergency stops)
- Cockpit servery unit (includes top loading coolbox (100ltrs) and storage cupboard)
- Electric drop window to dining area
- Passerelle to be wired via the master switch in addition to its own switch
- Stainless steel anchor in place of standard
- Primary anchor - 80kg Stainless Steel Claw anchor with 100m of 14mm galvanised chain
- Secondary anchor - 50kg Stainless Steel Claw anchor with 70m of 14mm galvanised chain
- Stainless steel keyway plates and slider system for later fitting of tender on bathing platform

- Plug in carbon pole transom shower and deck socket to bathing platform

GENERATOR

- Additional ONAN 27Kw/50Hz generator

ELECTRICAL

- Continental 220v/240v sockets
- Lava Brick BBQ in place of standard and additional Lava Brick BBQ to flybridge wetbar (2 in total)
- Heated towel rail in bathroom (each - specify bathroom to be fitted)
- Underfloor heating in bathrooms (each - specify location)
- Icemaker fitted in flybridge wetbar
- Miele wine cooler (38 bottle) fitted in galley
- Lavazza coffee machine located in galley with custom integrated base

AUDIO VISUAL & COMMUNICATIONS

- Cockpit seating area - Naim audio Uniti Atom with Bluetooth, multi-zone streaming capability and dedicated app. Paired with Bowers & Wilkins waterproof speakers (2) (no HDMI connectivity)
- Crew Cabin - 28" HD LED TV, Naim Uniti Atom audio system with Bluetooth, multi-zone streaming capability and dedicated app. Blu-ray CD/DVD player. Paired with Focal speakers (2)
- Foredeck seating walk-through area - Naim Uniti Atom audio system with Bluetooth, multi-zone streaming capability and dedicated app. Blu-ray CD/DVD player. Paired with Bowers &
- Wilkins waterproof speakers (2)(no HDMI connectivity)
- System includes:
- Surf WIFI incorporating external WIFI and 3G/4G antenna for extended range. Enabling connectivity to onshore WIFI networks throughout the vessel including crew and external guest areas.
- KVH (TV6) Tracvision - within a 60cm dome (linked to saloon TV)
- Dummy KVH (TV6) dome (60 cms)
- Satellite TV decoder (common interface) (each)(Decoders are required with each television if different channels are to be required at the same time)
- Marine router acting as a single control point for Satphone (when selected), 3G/4G services and marine Wi-Fi networks. Easily accessed and controlled via a web browser on any connected device, the router allows the owner and/or crew to control and restrict internet connections and access to the Satphone. Wi-Fi coverage is provided throughout the vessel including crew and external guest areas.

NAVIGATION

- Upgrade to Raymarine Axiom XL 19" brilliant colour multifunction displays (two at lower

helm with RMK-10 remote control & one at upper helm with RMK-10 remote control)

- Additional Raymarine Axiom XL 19" brilliant colour multifunction displays at upper helm with RMK-10 remote control)
- European version plotter
- Raymarine AIS Class B transponder interfaced with chartplotter & with 8ft (2.4m) aerial
- International VHF

MOSQUITO SCREENS

- Mosquito screens for portlights

SEA DELIVERY

- Compass adjuster to swing both compasses
- Supply 5 litre container of engine oil

Basic Information

Category: Motor Yacht

Sub Category: Flybridge

Model Year: 2019

Year Built: 2019

Country: Monaco

Fly Bridge: Yes

Cockpit: Yes

Dimensions

LOA: 86' 0" (26.20m)

Beam: 20' 9" (6.30m)

Max Draft: 5' 10" (1.77m)

Speed, Capacities and Weight

Max Speed: 33 Kts. (38 MPH)

Displacement: 146607.40423 Pounds

Water Capacity: 396.258078 Gallons

Fuel Capacity: 2905.892572 Gallons

Accommodations

Total Cabins: 4

Total Berths: 5

Sleeps: 8

Total Heads: 8

Crew Berths: 4

Crew Sleeps: 4

Crew Heads: 4

Hull and Deck Information

Hull Material: GRP

Hull Color: White

Exterior Designer: Bernard Olesinski

Interior Designer: Princess Design Studio
and Pininfarina

Engine Information

Engines: 2

Manufacturer: MAN

Model: MAN V12-1900

Engine Type: Inboard

Fuel Type: Diesel

PHOTOS

y85-exterior-white-hull-01



y85-exterior-white-hull-12



y85-exterior-white-hull-03



y85-exterior-cockpit-bar



y85-exterior-cockpit-seating



y85-exterior-flybridge-2



y85-exterior-flybridge-bar



y85-exterior-flybridge-bar-2



y85-exterior-flybridge-helm-2



y85-exterior-flybridge-seating



y85-interior-helm-walnut-satin



y85-interior-saloon-walnut-satin



y85-interior-saloon-seating-area-walnut-satin



y85-interior-dining-area-walnut-satin



y85-interior-galley-bar-blinds-closed-walnut-satin



y85-interior-galley-walnut-satin



y85-interior-owners-stateroom-walnut-satin



y85-interior-owners-stateroom-sofa-walnut-satin



y85-interior-owners-dressing-table-walnut-satin



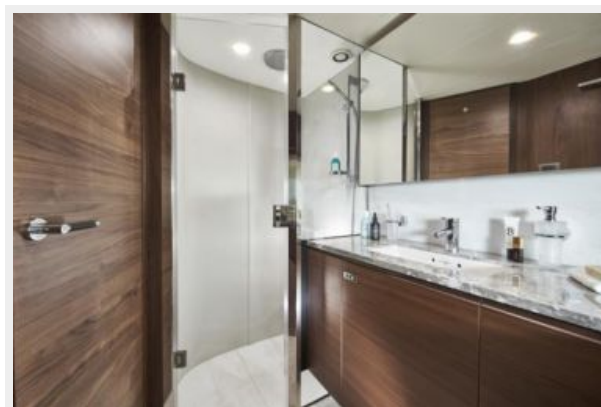
y85-interior-owners-bathroom-walnut-satin



y85-interior-port-guest-cabin-walnut-satin



y85-interior-forward-bathroom-walnut-satin



y85-interior-forward-guest-cabin-walnut-satin



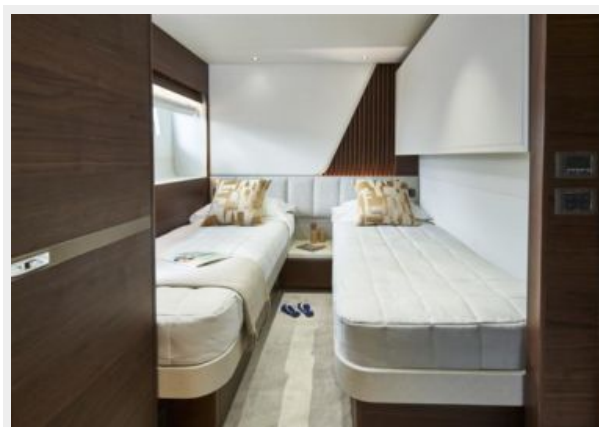
y85-interior-port-cabin-bathroom-walnut-satin



**y85-interior-starboard-cabin-bathroom-
walnut-satin**



**y85-interior-starboard-guest-cabin-walnut-
satin**



y85-interior-crew-mess-detail



y85-interior-crew-mess



y85-interior-starboard-guest-cabin-with-pullman-bunk-walnut-satin



CONTACTS

Andrey Shestakov, leading yacht broker of the sales department of Shestakov Yacht Sales Inc. Shestakov Yacht Sales Inc., the official representative of the Miami/Fort Lauderdale FL headquarters.

Contact details

Email: **andrey@shestakovyachtsales.com**

Web: shestakovyachtsales.com/en/

Telephones

USA: **+1(954)274-4435**

Office hours

Monday – Saturday: **9:00 - 21:00 EDT**

Sunday: **closed**

Address



Harbour Towne Marina, 850 NE 3rd St,
STE 213, Dania, FL 33004