

AQUARELLA — DEVONPORT



Builder: DEVONPORT

Year Built: 1994

Model: Motor Yacht

Price: PRICE ON APPLICATION

Location: Greece

LOA: 137' 10" (42.00m)

Beam: 26' 10" (8.16m)

Max Draft: 9' 9" (2.96m)

Cruise Speed: 19 Kts. (22 MPH)

Max Speed: 24 Kts. (28 MPH)

Our experienced yacht broker, Andrey Shestakov, will help you choose and buy a yacht that best suits your needs **AQUARELLA — DEVONPORT** from our catalogue. Presently, at Shestakov Yacht Sales Inc., we have a wide variety of yachts available on our sale's list. We also work in close contact with all the big yacht manufacturers from all over the world.

If you would like to buy a yacht **AQUARELLA — DEVONPORT** or would like help answering any questions concerning purchasing, selling or chartering a yacht, please call **+1(954)274-4435**

TABLE OF CONTENTS

TABLE OF CONTENTS	2
SPECIFICATIONS	4
Overview	4
Basic Information	4
Dimensions	4
Speed, Capacities and Weight	5
Accommodations	5
Hull and Deck Information	5
Engine Information	5
DETAILED INFORMATION	6
Technical Specifications	6
Exclusions	9
Disclaimer	10
PHOTOS	11
AQUARELLA_Lo-2-credit Quin BISSET-3	11
AQUARELLA_Lo-0029-credit Quin BISSET	11
AQUARELLA_Lo-7433-credit Quin BISSET	11
AQUARELLA_Lo-7458-credit Quin BISSET	11
AQUARELLA_Lo-7483-credit Quin BISSET	11
AQUARELLA_Lo-7660-credit Quin BISSET	11
AQUARELLA_Lo-7718-credit Quin BISSET	12
AQUARELLA_Lo-7702-credit Quin BISSET	12
AQUARELLA_Lo--credit Quin BISSET-14	12
AQUARELLA_Lo--credit Quin BISSET-12	12
AQUARELLA_Lo--credit Quin BISSET-6	12
AQUARELLA_Lo--credit Quin BISSET-7	12
AQUARELLA_Lo-7872-credit Quin BISSET	13
AQUARELLA_Lo-7875-credit Quin BISSET	13

AQUARELLA_Lo-6896-credit Quin BISSET	13
AQUARELLA_Lo--credit Quin BISSET-2	13
AQUARELLA_Lo-6944-credit Quin BISSET	13
AQUARELLA_Lo-6952-credit Quin BISSET	13
AQUARELLA_Lo--credit Quin BISSET-3	14
AQUARELLA_Lo--credit Quin BISSET-5	14
AQUARELLA_Lo-7878-credit Quin BISSET	14
AQUARELLA_Lo-7881-credit Quin BISSET	14
AQUARELLA_Lo--credit Quin BISSET	14
CONTACTS	15
Contact details	15
Telephones	15
Office hours	15
Address	15

SPECIFICATIONS

Overview

Built in GRP to a design by Michael Peters Yacht Design, M/Y AQUARELLA was delivered by British yard Devonport in 1994 with refits in 2009 and 2018. Brand new interiors feature rich woods, monochrome furnishings and white marble finishes. A large open-plan main saloon has comfortable settees to port and starboard and massive windows, allowing daylight to flood in. A flexible layout, configurable into five cabins, can accommodate up to 11 guests. The standard layout is configured as a master suite, VIP suite, a double and a twin. All guest cabins have entertainment centers, television screens and en suite bathroom facilities while crew quarters are for six members. Deck highlights include shaded al fresco dining spaces on the foredeck and sundeck and, having enjoyed a very successful charter career, she comes with a full range of water toys. Twin 1,865 MTU diesel engines allow a cruising speed of 19 knots topping out at 24 knots and she is fitted with Naiad zero speed stabilizers.

Basic Information

Category: Motor Yacht

Model Year: 1994

Year Built: 1994

Refit Year: 2018

Refit Type: Interior/Exterior

Country: Greece

Vessel Top: Bimini Top

Fly Bridge: Yes

Dimensions

LOA: 137' 10" (42.00m)

LWL: 101' 9" (31.00m)

Beam: 26' 10" (8.16m)

Max Draft: 9' 9" (2.96m)

Speed, Capacities and Weight

Cruise Speed: 19 Kts. (22 MPH)

Cruise Speed Range: 665

Max Speed: 24 Kts. (28 MPH)

Displacement: 330693.393 Pounds

Gross Tonnage: 247 Pounds

Water Capacity: 999.89121682 Gallons

Fuel Capacity: 6868.473352 Gallons

Fuel Consumption: 206.05420056 Gallons

Accommodations

Total Cabins: 5

Sleeps: 11

Crew Cabin: 3

Crew Berths: 6

Crew Sleeps: 6

Crew Heads: 2

Hull and Deck Information

Hull Material: GRP

Deck Material: Teak over Fiberglass

Hull Configuration: Planing

Hull Color: Black

Hull Finish: Stainless Steel

Hull Designer: Michael Peters Yacht Design

Exterior Designer: Michael Peters Yacht Design

Interior Designer: Felix Buytendijk Yacht Design

Engine Information

Engines: 2

Manufacturer: MTU

Model: 12V 396TB94

Engine Type: Inboard

Fuel Type: Diesel

DETAILED INFORMATION

Technical Specifications

Main Characteristics

Name	Aquarella	
Type	Motor Yacht	
Year	1994	
Refit	2018	
Flag	Greek	
L _{OA}	42.00 m	137.1 ft
L _{WL}	31.00 m	101.9 ft
Beam	8.10 m	26.1 ft
Draft	2.96 m	9.9 ft
Gross tonnage	247	
Full Load Displacement	150 t	
Hull Material	GRP	
Superstructure Material	GRP	
Hull Color	Black - Awlgrip	
Superstructure Color	White - Awlgrip	
Hull Configuration	Planing	
Naval Architect	Michael Peters Yacht Design	
Exterior Designer	Michael Peters Yacht Design	
Interior Designer	Felix Buytendijk Yacht Design	
Staterooms	5	
Sleeps	11	
Crew Quarters	3	
Crew Berths	6	
Class	Hellenic Register of Shipping	
Commercial	Yes	

Capacities

Cruise Speed	19 kn	Approx 780 l/hr
Max. Speed	24 kn	
Fuel Capacity	26,000 l	4227 US Gallons
Water Capacity	3,785 l	845 US

Range	665 nm	Gallons @ 19 kn
Machinery		
Engines	2x MTU 1865 HP	
Engine Model	12V 396TB94	
Engine Hours	5228 (18/03/2020)	
Reduction Gear	2x ZF BW 45S	
Fuel	Diesel	
Fuel Separator	Alfalaval MAB 103B + Racor filters	
Propulsion	2x Aquamet 22 shafts and 2x 4-blade propellers	
Bow Thruster	Schottle STT 010 – 48kW	
Generators	1x 80kW Onan 1x 80kW Kohler	
Generators Hours	2866 (18/03/2020)	
Steering System	Tenefjord JR-2-130	
Stabilizers	Naiad Model 353	
Shore Power	380V/230V/110V/24V – 50Hz 3-phase	
Air Conditioning	Technocold 240,000 BTU – 4 compressors – 19 fancoils	
Watermaker	2x Sea Recovery SRC800 AC – 250 l/hr	
Fresh Water System	Grunfos JP6	
Sewage System	Microphor M150	
Grey Water Filtration	Victor Minisep	
Galley & Laundry Equipment		
Dishwashers	Miele	Galley
Fridges	Gaggenau	Galley
Additional fridges	Grunert	Flybridge
Additional freezers	2x Grunert	Flybridge, lazarette
Wine cooler	Ero Cave	Galley
Oven	Gaggenau	Galley
Microwave	Gaggenau	Galley
Cookers	Optima	Galley
Grill	Jenn Aire	Flybridge
Icemaker	U-Line, Gaggenau	Flybridge, galley
Washing/Drying Machine	Philco	Lazarette

Washing Machine	Whirpool	Crew area
Drying Machine	Morris	Crew area
Additional	Pressing and ironing equipment ISE 8251 trash compactor ISE 77 food dispenser	

Communication Equipment

Nera Fleet 33 satellite telephone system

Wavoeau MCM3 satellite telephone system

Toshiba DK24 phone system
HP2410 fax/copier/scanner

Motorola 190 and Motorola GSM cell phones

2x Dell 2400 ship's computers w/flat screens

Icom M127 and Shipmate RS8100 VHF radios

3x standard HX 238S hand held VHF radios

Intercom system

Navigation Equipment
Anschutz Delta compass w/transmitter

Robertson/Stowe dataline rudder indicator

Furuno RD-30 GPS

Anschutz Nautocourse autopilot

Anschutz Gyrostar gyrocompass

Furuno FAX-210 weatherfax

Simrad EC206 colour sounder

Taiyo TDL 1550A indicator

2x Furuno FCR 1411 MK3 colour/monochrome radars

Northstar 962 Chart-plotter w/Maptech charts

A/V & Entertainment System

2x 42" screen television in salon

LG stereo equipment in salon

TV/VCR/DVD in every guest cabin, crew

quarters and captain's cabin
 Stereo equipment in all cabins and crew
 area
 SAT
 TV/DVD/AUDIO/Mp3/Playstation/Nintendo
 Wii entertainment in main salon

Deck Equipment

2x Steen type 23.48 anchor windlass
 Nautical Structures EX2500 low profile
 crane
 2x Poole 219Kg balanced anchors with
 100m chain
 Nautical structures YD600 davit
 2x 17.5mm stud link anchor chains
 Marquipt MIDOS accommodation ladder
 Marquipt passerelle
 2x Steen capstans on swimming platform

Security & Safety

EPIRB Sart
 Portable fire extinguishers
 CO₂ firefighting system in engine room
 Monitoring/Alarm system
 Smoke detectors
 Fire hoses fore and aft
 VIAS includes bilge and fire alarm
 2x 6-man life rafts

Tender & Toys

Tender	Sacs RIB tender 5.35m with 90hp Tohatsu engine
Toys	Sea Doo Waverunner – 3 seats – 215hp Waterskis Tubes Banana x5 people Wakeboard Fishing & Snorkelling Equipment

Exclusions

Owner's personal belongings.

Disclaimer

The Company offers the details of this vessel or yacht in good faith but cannot guarantee or warrant the accuracy of this information nor warrant the condition of the vessel. A buyer should instruct his representatives, agents, or his surveyors, to investigate such details as the buyer desires validated. This vessel or yacht is offered subject to prior sale, price change, or withdrawal without notice.

PHOTOS

AQUARELLA_Lo-2-credit Quin BISSET-3



AQUARELLA_Lo-0029-credit Quin BISSET



AQUARELLA_Lo-7433-credit Quin BISSET



AQUARELLA_Lo-7458-credit Quin BISSET



AQUARELLA_Lo-7483-credit Quin BISSET



AQUARELLA_Lo-7660-credit Quin BISSET



AQUARELLA_Lo-7702-credit Quin BISSET



AQUARELLA_Lo-7718-credit Quin BISSET



AQUARELLA_Lo--credit Quin BISSET-12



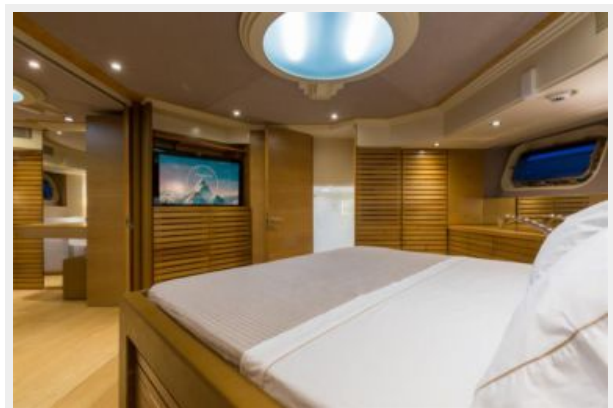
AQUARELLA_Lo--credit Quin BISSET-14



AQUARELLA_Lo--credit Quin BISSET-6



AQUARELLA_Lo--credit Quin BISSET-7



AQUARELLA_Lo-7872-credit Quin BISSET



AQUARELLA_Lo-7875-credit Quin BISSET



AQUARELLA_Lo-6896-credit Quin BISSET



AQUARELLA_Lo--credit Quin BISSET-2



AQUARELLA_Lo-6944-credit Quin BISSET



AQUARELLA_Lo-6952-credit Quin BISSET



AQUARELLA_Lo--credit Quin BISSET-3



AQUARELLA_Lo--credit Quin BISSET-5



AQUARELLA_Lo-7878-credit Quin BISSET



AQUARELLA_Lo-7881-credit Quin BISSET



AQUARELLA_Lo--credit Quin BISSET



CONTACTS

Andrey Shestakov, leading yacht broker of the sales department of Shestakov Yacht Sales Inc. Shestakov Yacht Sales Inc., the official representative of the Miami/Fort Lauderdale FL headquarters.

Contact details

Email: andrey@shestakovyachtsales.com

Web: shestakovyachtsales.com/en/

Telephones

USA: +1(954)274-4435

Office hours

Monday – Saturday: **9:00 - 21:00** EDT

Sunday: **closed**

Address



Harbour Towne Marina, 850 NE 3rd St,
STE 213, Dania, FL 33004