

OCEAN DEVOTION — ROUGHWATER



Builder: ROUGHWATER

LOA: 39' 0" (11.89m)

Year Built: 1985

Model: Motor Yacht

Price: PRICE ON APPLICATION

Location: United States

Our experienced yacht broker, Andrey Shestakov, will help you choose and buy a yacht that best suits your needs **Ocean Devotion — ROUGHWATER** from our catalogue. Presently, at Shestakov Yacht Sales Inc., we have a wide variety of yachts available on our sale's list. We also work in close contact with all the big yacht manufacturers from all over the world.

If you would like to buy a yacht **Ocean Devotion — ROUGHWATER** or would like help answering any questions concerning purchasing, selling or chartering a yacht, please call **+1(954)274-4435**

TABLE OF CONTENTS

TABLE OF CONTENTS	2
SPECIFICATIONS	3
Overview	3
Basic Information	3
Dimensions	3
Accommodations	4
Hull and Deck Information	4
Engine Information	4
PHOTOS	5
CONTACTS	14
Contact details	14
Telephones	14
Office hours	14
Address	14

SPECIFICATIONS

Overview

(LOCATION: Clearwater Beach FL) The Roughwater 37 Motor Yacht is a spacious flybridge motor yacht designed for comfortable cruising. She comes with a flybridge, pilothouse salon, cockpit, walk around main deck, galley down with large dinette, and private stateroom.

The spacious flybridge features a new bimini top, upper helm station, and guest lounge. The 37 features a stainless steel railing, walk around main deck, open cockpit, and swim platform. There is room for fishing or relaxing. The foredeck features include bow pulpit with anchor & windlass.

The pilothouse salon has room for relaxing or entertaining. Large windows let in natural light and blinds provide privacy. A lower helm station provides all-weather operation. The galley is down and is equipped with solid surface counter top, stainless steel sink, electric range, microwave oven, and refrigerator. A large U-shaped dinette converts to double berth.

The forward stateroom has a V-berth, ample storage, and hanging locker. The head compartment has vanity, toilet, and shower. The accommodations are roomy, comfortable, and private. Two HVAC units maintain interior comfort.

This 39' Roughwater is equipped with twin 240-hp Detroit Diesel engines with only 1900 hours. They are designed to provide long-lasting, dependable, and economical power. She is a full featured motor yacht with room to spare and is ready to cruise or live aboard. Call now for more information and to schedule a showing of this classic motor yacht.

Basic Information

Category: Motor Yacht

Sub Category: Flybridge

Model Year: 1985

Year Built: 1985

Country: United States

Dimensions

LOA: 39' 0" (11.89m)

Accommodations

Total Cabins: 1

Hull and Deck Information

Hull Material: Fiberglass

Engine Information

Engines: 1

Manufacturer: Detroit Diesel

PHOTOS

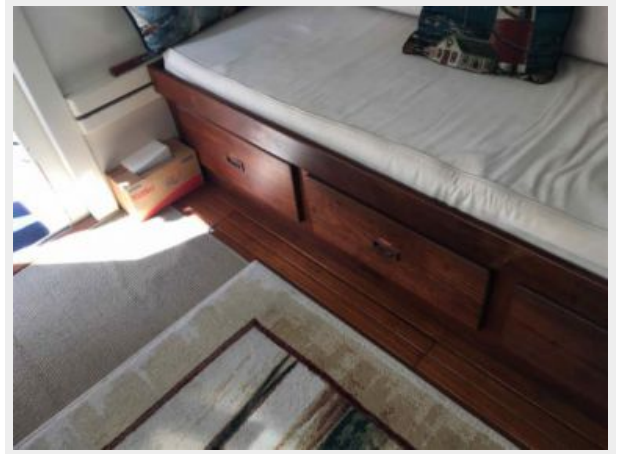
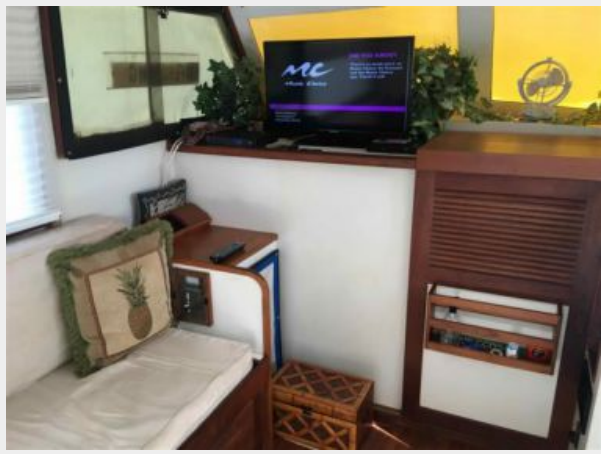


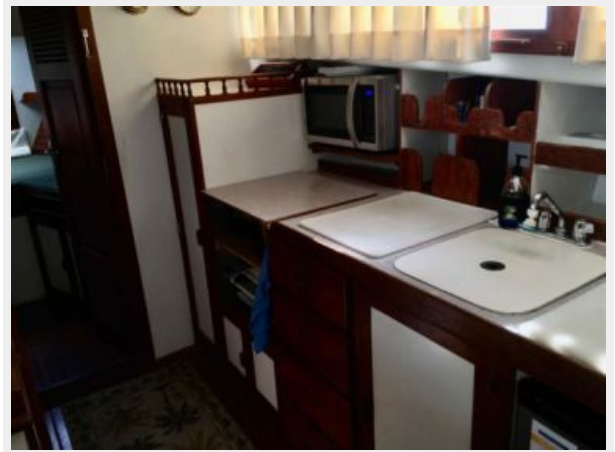


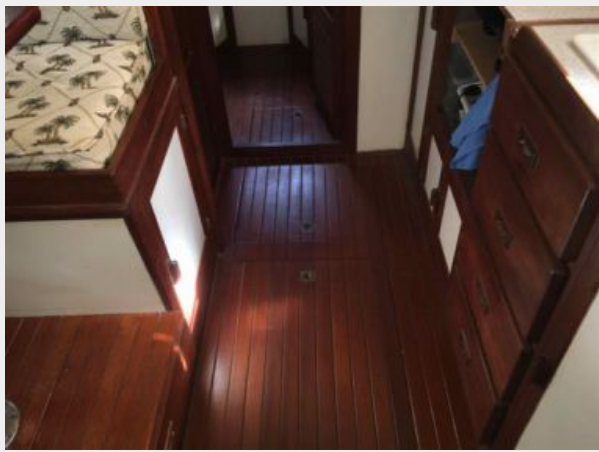














CONTACTS

Andrey Shestakov, leading yacht broker of the sales department of Shestakov Yacht Sales Inc. Shestakov Yacht Sales Inc., the official representative of the Miami/Fort Lauderdale FL headquarters.

Contact details

Email: andrey@shestakovyachtsales.com

Web: shestakovyachtsales.com/en/

Telephones

USA: +1(954)274-4435

Office hours

Monday – Saturday: **9:00 - 21:00** EDT

Sunday: **closed**

Address



Harbour Towne Marina, 850 NE 3rd St,
STE 213, Dania, FL 33004