

SOARING — ABEKING & RASMUSSEN



Судостроитель:
ABEKING & RASMUSSEN

Год постройки: 2020

Модель: Мега-яхта

Цена: **ЦЕНА ЯХТЫ ПО ЗАПРОСУ**

Местонахождение: Italy

Длина общая: 223' 10" (68.20m)

Ширина: 38' 1" (11.60m)

Мин. осадка: 10' 10" (3.30m)

Макс. осадка: 11' 4" (3.45m)

Крейс. скорость: 14 Kts. (16 MPH)

Макс. скорость: 16.2 Kts. (19 MPH)

Купить **SOARING — ABEKING & RASMUSSEN** а также выбрать подходящую вам яхту из нашего каталога яхт вам поможет опытный яхтенный брокер Андрей Шестаков. На сегодняшний день компания **Shestakov Yacht Sales Inc.** имеет большое количество яхт в собственном списке продаж, а также тесно сотрудничает со всеми крупными яхтенными производителями по всему миру.

Для того чтобы купить яхту **SOARING — ABEKING & RASMUSSEN** а также проконсультироваться по любому вопросу связанному с покупкой, продажей, чартером яхт позвоните по телефону **+7(918)465-66-44**.

ОГЛАВЛЕНИЕ

ОГЛАВЛЕНИЕ	2
ХАРАКТЕРИСТИКИ	4
Основная информация	4
Размеры	4
Скорость, вместимость и масса	4
Размещение	4
Корпус и палуба	5
Информация о двигателе	5
ПОДРОБНОЕ ОПИСАНИЕ	6
MACHINERY	6
PROPULSION & STEERING	6
STABILISERS	6
MECHANICAL	6
ELECTRICAL	6
COMMUNICATION & NAVIGATION EQUIPMENT	6
ENTERTAINMENT	7
DOMESTIC APPLIANCES, EQUIPMENT & LAUNDRY	7
INTERIOR DESCRIPTION SUMMARY	8
DECK	9
PAINT JOB	9
TENDERS & TOYS	9
SAFETY & SECURITY	9
OTHER FACILITIES	9
Исключения	10
Отказ от ответственности	10
ФОТОГРАФИИ	11
14612.0	11
14612.1	11

14612.2	11
14612.3	11
14612.5	11
14612.4	11
14612.7	12
14612.6	12
14612.8	12
14612.9	12
14612.11	12
14612.10	12
14612.13	13
14612.12	13
14612.14	13
14612.15	13
14612.16	13
14612.17	13
14612.18	14
14612.19	14
GA	14
14612.20	14
КОНТАКТЫ	15
Контактная информация	15
Телефоны	15
Время работы	15
Адрес	15

ХАРАКТЕРИСТИКИ

Основная информация

Тип судна: Мега-яхта

Модельный год: 2020

Год постройки: 2020

Страна: Italy

Размеры

Длина общая: 223' 10" (68.20m)

Длина по ватерлинии: 200' 10" (61.20m)

Ширина: 38' 1" (11.60m)

Мин. осадка: 10' 10" (3.30m)

Макс. осадка: 11' 4" (3.45m)

Скорость, вместимость и масса

Крейс. скорость: 14 Kts. (16 MPH)

Дальность на крейсерской скорости:
4500

Макс. скорость: 16.2 Kts. (19 MPH)

Чистый вес: 1420 Pounds

Вместимость воды: 79251.6156 Gallons

Объем топливного бака: 39625.8078
Gallons

Расход топлива: 145.2946286 Gallons

Размещение

Всего кают: 6

Спальные места: 12

Спальных мест экипажа: 17

Корпус и палуба

Материал корпуса: Steel

Материал палубы: Teak

Комплектация корпуса: Full
Displacement

Цвет корпуса: Grey

Дизайнер экстерьера: Focus Yacht
Design

Дизайнер интерьера: Focus Yacht Design

Информация о двигателе

Двигатели: 2

Производитель: MTU

Модель: MTU 12V 4000 M65R

ПОДРОБНОЕ ОПИСАНИЕ

MACHINERY

Engines: 2 x MTU 12V 4000 M65R 1,492kW @ 1,600 RPM Engine hours: Port Side: 557hrs / Stbd Side: 559hrs (15.12.2020)

Generators: 2 x CAT each 383kW; 1 x CAT 130KW emergency gen Generator hours: Port Side: 1521hrs / Stbd Side: 1557hrs (15.12.2020)

PROPULSION & STEERING

-ZF Gear with 4:1 ratio or equivalent-Propulsion engine exhaust provided with exhaust gas after treatment system (SCR) and dry silencer-5-bladed fixed pitch propeller by Piening or Schaffran with 190cm diameter-(1) Schottel or equivalent bow thruster 185 kW-(1) schottel or equivalent stern thruster 200 kW-Thrusters can be controled from bridge and both wings-(1) pair of non-retractable zero speed active fin stabilizers of type NAIAD fins

STABILISERS

Stabilisers at anchor: Yes Stabilisers underway: Yes Stabilisers details: (1) pair of non-retractable zero speed active fin stabilizers of type NAIAD

MECHANICAL

-Air conditioning-Engine Control and Monitoring System (ADEC)-Each engine fitted with a MTU Local Operation Panel (LOP)-"Common Rail" fuel injection system-(1) Anchor wash system-(1) Overhead beam crane for tender launching-(1) Hydraulic rescue boat crane on forward deck-(1) Electrical operated turning boom crane for toys-(1) Reverse osmosis duplex freshwater maker (30000 liters/day)-(1) Hydrophore system-(1) UV sterilizing plant-(1) Silver ion system-(2) Water calorifers-Deck wash system on each deck

ELECTRICAL

-230/400 V, 50 Hz, 1/3Ph/N electrical system-24v DC electrical system-(1) 330/250 kVA Converter of type SER or equal-Each generator fitted with electric starting motor and intergrated monitoring system-Engine Control and Monitoring System (ADEC)

COMMUNICATION & NAVIGATION EQUIPMENT

Navigation and communication system delivered by Raytheon Anschütz Communication:-(2)
 VHF/DSC Radio Telephone System-(1) Remote control unit for VHF Radios for crew mess-(1)
 Remote control unit for VHF Radios for tender garage-(1) MF/HF Radio telephone system , 150
 W DSC class A-(1) GMDSS Alarm Panel-(1) Power distribution box w automatic switch
 over Transponder System:-(1) Automatic identification system (AIS) R5-(1) Power Converter
 230/120 VAC for mobile AIS pilot suitcase Navigation:-(2) R5 DGNSS receivers with
 antenna Navigation Radar:-(2) Synapsis NX workstation including PSU with additional software
 modules for advanced collision avoidance, route planning and monitoring etc.-(2) Additional 23"
 TFT monitors-(1) NautoScan NX 25kW S-Band Radar Up w/ 8 ft antenna for 230VAC
 -(1) NautoScan NX 30kW S-Band Radar Up w/ 12 ft antenna for 230VAC Search Lights:
 - (2) Sanshin Xenon searchlights model HRX-
 150 Echo Sounder:
 -(1) Navigational echo sounder GDS101 SATCOM system:-(2) Inmarsat mini-c GMDSS-
 system-(1) SSAS Add on kit for Inmarsat-(1) Fleet broadband Inmarsat 500 INTERCOM system:-
 (1) Phontech Data Receivers:-(1) NAVTEX receiver NX-700A-(1) Extension package for
 GMDSS Magnetic and Gyrocompass system Log with (2) multi display Furuno RD33 Wind and
 weather sensor system Autopilot

ENTERTAINMENT

- TV's in all guest cabins except Master Suite.-All guest areas have access to audio global
 sources, this includes spa and beach club area- Central entertainment system that includes Sky
 UK, Apple TV, Direct TV, Free to air- Entertainment: Playstation 4, Kalidascape, Bluera y DVD,
 Cinema in lounge- Music: Radio, Internet radio, Airplay via Apple TV- (1) 4G GSM for voice
 communication-(16) locations have Steward Call Button on Entertainment touch panel- Elaborate
 telephone system

DOMESTIC APPLIANCES, EQUIPMENT & LAUNDRY

TD Galley:-(1) Refrigerator (Liebherr GKPv 6590)-(1) Dish washer - Miele PG8056U-(1)
 Microwave Panasonic NE-C 1475 TD Laundry:-(5) Washing machine, 6,5 kg - Miele PW6065-(5)
 Drying machine, 6,5 kg - Miele PT7136-(1) Rotary iron - Miele PM1210-(1) Steam iron + board -
 Laurastar Pulse LD Galley:-(1) Refrigerator, full height - Liebherr GKPv 6590-(1) Freezer, full
 height - Liebherr GGPv 6590-(1) Cooled drawers - Custom-(1) Steamer oven - Rational SCC 61
 -(6) Induction cooking range (1 zones)- Goldstar-(1)
 Double fryer - Goldstar-(1) Griddle - Goldstar-(1) Oven - MKN 2/1 GN-(1) Salamander - MKN
 Vario-(1) Microwave - Panasonic NE 1880-(1) Dish washer - Hobart FXL-(1) Dish washer Miele
 PG8056U-(1) Exhaust hood with integrated UV-C fat burning system -custom-(2) Food Warming
 Bridge - Scholl 29065-(1) Beach club refrigerator (Liebherr FKUv 1660)-(1) Beach club icemaker
 (Hoshizaki IM - 30) MD Pantry:-(1) Refrigerator, full height - Liebherr GKPv 6590-(1) Icemaker -
 Hoshizaki IM-30-(1) Dish washer - Miele PG8056U OOD Pantry/Suite:-(1) Mini bar (Dometic Hpro

6000)-(1) Refrigerator, full height - Liebherr GKPv 6590-(1) Icemaker - Hoshizaki IM-30-(1) Dish washer - Miele PG8056U-(1) Wine cabinet, Eurocave multizone S-Pure-L-(1) Dish washer - Miele PG8056USD Pantry:-(1)Barbecue-(1)Icemaker

INTERIOR DESCRIPTION SUMMARY

Tank Deck:-Dry store aft-Crew mess/lounge-(1) Crew dayhead-Dry store forward
Lower Deck Crew:-Engine control room-Crew boarding-Cooled trash store-Dry store (9 m Shelves - Bosh system)-Galley-Cold store-Freezer store-Av/Rack room-(9) Crew cabins with 2 single beds and one bathroom each -Storage room

Lower Deck Guest: - Lower

Deck Guest area contains spacious beach club. It includes gym equipment such as a treadmill, rowing machine and an exercise bike, a coffee table and a sofa. - Spa area with marble floors and floor heating. Spa area offers a lobby, shower, hammam/steam room.

Main Deck Crew:

-Pantry store -House-keeping
Main Deck Guest:-The main salon is located on the main deck and includes an entertainment cabinet, 2 armchairs, 8 sofa seats, 1 coffee table, 2 side tables and several pieces of artwork.-The dining room lies forward of the main salon and includes a large dining table with 10 chairs. The floor is covered in carpet.-(1) Day head-(4) Guest suites: The guest suites lie forward of the dining area on the MD. Each guest suite includes a double bed, 2 night tables, a wardrobe cabinet, a furniture safe, a desk with chair, and entertainment equipment. The floor is covered in carpet. Furthermore each suite has its own marble bathroom with floor heating.-(1) VIP Guest Suite - In addition to the 4 guest suites there is one further VIP guest suite located on the MD. It includes a double bed, 2 night tables, a full-height book cabinet, a day bed, and a desk with chair. The floor is covered in carpet. In addition the VIP guest suite includes a large wardrobe and a marble bathroom with floor heating.
Owners Deck Crew:-Pantry-House-keeping store-Security cabin including two berths, a desk, built in safe and a bathroom
Owner's Deck Guest:-The owner's deck includes the owner's suite with a spacious stateroom, a dressing room and a private office. In addition forward of the owner's suite there is a library that is intended for both the guests and the owner. From his suite the owner has direct access to the outside deck. The stateroom contained in the suite includes a double bed, 2 night tables and a lounge chair/day bed. The floor is covered in carpet. A large marble bathroom with both a shower and a bathtub (with whirlpool generator) complete the stateroom. Also included in the suite is a dressing room that includes a large mirror, as well as a wardrobe cabinet, a built-in furniture safe, a make-up table and a mini bar. Finally the owner's suite contains an office with 2 book cabinets, 1 desk with drawers and door and 2 sofa seats. A guest passage allows the guests to access the lounge/library located forward of the owner's suite. It contains 2 full height book shelves, 7 sofa seats, 2 coffee tables, 2 side table and 3 sofa consoles.
Sun Deck Crew Area:-(1) Day head-Captain's cabin with 1 double bed, 2 night tables, 1 cabinet, 1 wardrobe and a furniture safe. The captain has his own bathroom.-Wheelhouse-Ship's office with 2 book cabinets, 2 desks and chairs.
Pantry-Crew dayhead
Headroom Staterooms: 210.00 cm
Headroom Main Deck: 220.00 cm
Headroom Skylounge: 220.00 cm

DECK

Lower Deck:-Toy store including ceiling crane for lifting-Dive store
 Main Deck Aft:-(1) Sofa-(1) Coffee Table-(1) Dining Table for 10 persons-(1) Sideboard for storage and integrated up and down "glas" for privacy-(2) vertical two speed electrically driven yacht capstans
 Main Deck Forward:-Yacht tender storage-(1) Gantry crane system-(2) vertical anchor capstans electrically driven (400 V) with 2 speed forward and reverse
 Owner's Deck Seating Area:-(2) Sofa
 Owner's Deck Aft Seating Area:-(1) Circular lacquered teak top gamble table for 4 persons-(1) Sofa-(1) Rectangular oiled teak coffee table
 Sun Deck Aft Outside Area:-(1) Stone top Sideboard PS with integrated doors and barbecue grill-(1) Icemaker-(1) Sofa-(1) Dining table-(1) Riviera pool for four persons with underwater lights-(1) Outside shower

PAINT JOB

(1) Awlgrip Topcoat in: any white, cream, light grey color

TENDERS & TOYS

- Compass limousine tender 9.00m- Pascoe open tender 7.50m- Rescue Tender- (2) Jet Skies- (2) Aqua Bikes- (2) Seabobs- SUP- Kajaks- Sea Pool- Dive Equipment
 Gym equipment:- Red cord set up,- Technogym Skillrow- Technogym Bike Unit
 - Technogym Run Unit - Flexbell 10
 w. Adjustable Dumbbell Set with Stand

SAFETY & SECURITY

Modular microprocessor controlled Alarm and Monitoring System (AMCS), make Böning or equivalent:-(1) Duty alarm/engineer call system-(1) Watch alarm system-(1) Mimic diagrams for status indications-(1) Signalisation system for machinery, fire, general, telephone alarm and emergency engine telegraph-(1) Bridge navigation watch alarm system-(1) Fire detecting plan including smoke detectors and alarm indication panel-(1) General alarm system-(1) Monitoring and control system for engine room from bridge wing/wheelhouse-(1) Semi automatic NOVEC 1230 fire-fighting system-(1) CO2 fire-fighting system in exhaust hood main galley-(1) Seawater fire-fighting-(1) Sprinkler system
 CCTV System:-(6) Heavy duty PTZ camera-(6) Fixed dome camera-(1) CCTV recorder-(5) CCTV workstations

OTHER FACILITIES

Wifi: Yes

Исключения

При продаже яхты исключаются личные вещи владельца.

Отказ от ответственности

Компания предоставляет описание судна или яхты добросовестно, но не может гарантировать точность этой информации, а также не ручается за техническое состояние. Покупатель должен проинструктировать своих агентов или оценщиков исследовать представленную информацию более подробно, по собственному желанию. Продажа судна или яхты, изменение цены или снятие с продажи будет происходить без предварительного уведомления.

ФОТОГРАФИИ

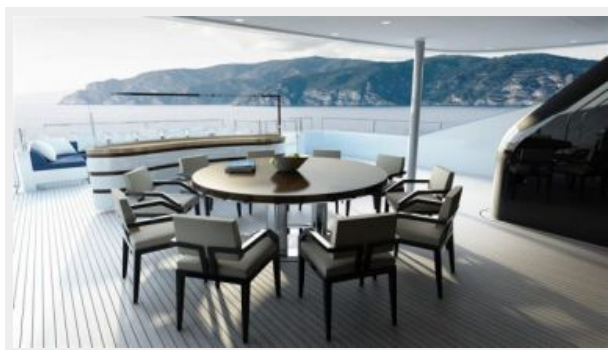
14612.0



14612.1



14612.2



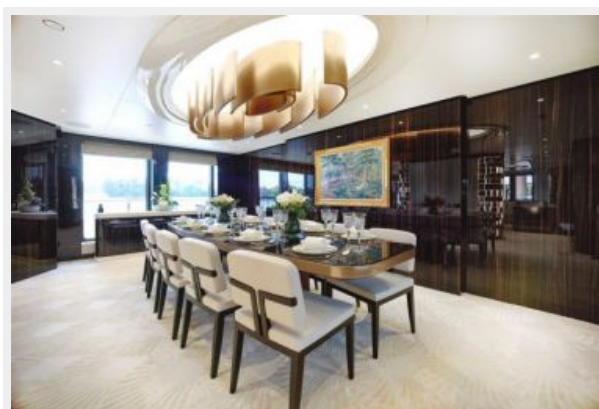
14612.3



14612.4



14612.5



14612.6



14612.7



14612.8



14612.9



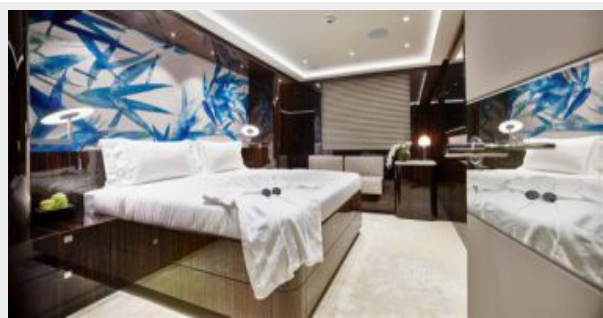
14612.10



14612.11



14612.12



14612.13



14612.14



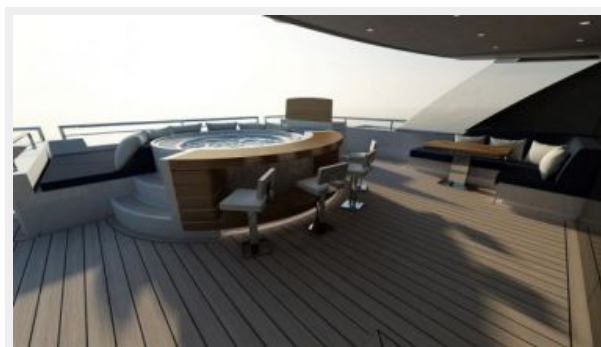
14612.15



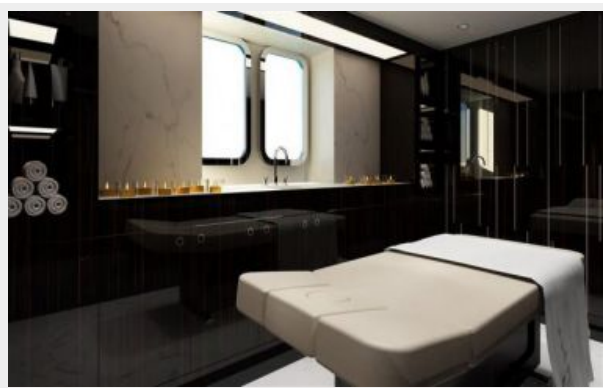
14612.16



14612.17



14612.18



14612.19



GA

14612.20



КОНТАКТЫ

Андрей Шестаков (Andrey Shestakov) – ведущий яхтенный брокер отдела продаж яхт и судов компании Shestakov Yacht Sales Inc. Официальный представитель Shestakov Yacht Sales Inc. для русскоговорящих клиентов в центральном офисе компании в Майами/Форт Лодердейл/Флорида/США.

Контактная информация

Email: andrey@shestakovyachtsales.com

Web: shestakovyachtsales.com

Телефоны

Краснодарский край: **+7(918)465-66-44**

США, Майами, Флорида: **+1(954)274-4435**

Время работы

Понедельник – Суббота: **9:00 - 21:00**
EDT

Воскресенье: **Закрыто**

Адрес



Harbour Towne Marina, 850 NE 3rd St,
STE 213, Dania, FL 33004