

BLUEGRASS — GRAND BANKS



Судостроитель: GRAND BANKS

Год постройки: 1985

Модель: Траулер

Цена: **ЦЕНА ЯХТЫ ПО ЗАПРОСУ**

Местонахождение: United States

Длина общая: 42' 0" (12.80m)

Ширина: 13' 7" (4.14m)

Макс. осадка: 4' 2" (1.27m)

Крейс. скорость: 8 Kts. (9 MPH)

Макс. скорость: 10.5 Kts. (12 MPH)

Купить **Bluegrass — GRAND BANKS** а также выбрать подходящую вам яхту из нашего каталога яхт вам поможет опытный яхтенный брокер Андрей Шестаков. На сегодняшний день компания **Shestakov Yacht Sales Inc.** имеет большое количество яхт в собственном списке продаж, а также тесно сотрудничает со всеми крупными яхтенными производителями по всему миру.

Для того чтобы купить яхту **Bluegrass — GRAND BANKS** а также проконсультироваться по любому вопросу связанному с покупкой, продажей, чартером яхт позвоните по телефону **+7(918)465-66-44**.

ОГЛАВЛЕНИЕ

ОГЛАВЛЕНИЕ	2
ХАРАКТЕРИСТИКИ	6
Обзор	6
Основная информация	6
Размеры	6
Скорость, вместимость и масса	6
Размещение	7
Корпус и палуба	7
Информация о двигателе	7
ПОДРОБНОЕ ОПИСАНИЕ	8
MAIN DESCRIPTION	8
42' GRAND BANKS WALKTHROUGH	8
42' GRAND BANKS ACCOMMODATIONS	8
42' GRAND BANKS SALON	8
42' GRAND BANKS GALLEY	8
42' GRAND BANKS AUDIO/VISUAL EQUIPMENT	9
42' GRAND BANKS ELECTRONICS	9
42' GRAND BANKS ELECTRICAL SYSTEM	9
42' GRAND BANKS ENGINE/MECHANICAL EQUIPMENT	9
42' GRAND BANKS DECK EQUIPMENT	9
42' GRAND BANKS SAFETY AND FIRE PROTECTION	9
42' GRAND BANKS TENDER	10
42' GRAND BANKS EXCLUSIONS	10
DISCLAIMER	10
Исключения	10
Отказ от ответственности	10
ФОТОГРАФИИ	11
2	11

1 Bluegrass Profile picture	11
3	11
4	11
5	12
6	12
7	12
8	12
9	12
10	12
11	13
12	13
13	13
14	13
15	13
16	13
17	14
18	14
19	14
20	14
21	15
22	15
23	15
24	15
26	15
25	15
27	16
28	16
29	16
30	16

31	16
32	16
34	17
33	17
35	17
36	17
37	17
38	17
39	18
40	18
41	18
42	18
43	18
44	18
46	19
45	19
47	19
48	19
49	20
50	20
51	20
52	20
53	20
54	20
55	21
КОНТАКТЫ	22
Контактная информация	22
Телефоны	22
Время работы	22

Адрес

22

ХАРАКТЕРИСТИКИ

Обзор

You could easily mistake this boat for one that's at least ten years newer. New main decks, a recent bottom job and engines that have been consistently serviced with a maintenance log and annual oil sample reports for the last nine years. Current owner is a retired engineer whose rigorous approach to maintenance means that this boat could leave the dock tomorrow for that cruise you always wanted to take. BLUEGRASS is a clean, uncluttered classic 42' Grand Banks in excellent condition. She offers twin Ford Lehman 135 HP engines, Westerbeke 8 KW generator, and a 10 foot Walker Bay RIB tender with a Tohatsu 6hp 4-stroke outboard. She has had many new systems and components added in the last few years, including all new Garmin electronics (2015), new fresh water tanks (2015) and a completely new teak main deck (2017).

Основная информация

Тип судна: Траулер

Модельный год: 1985

Год постройки: 1985

Страна: United States

Размеры

Длина общая: 42' 0" (12.80m)

Длина по ватерлинии: 40' 9" (12.42m)

Ширина: 13' 7" (4.14m)

Макс. осадка: 4' 2" (1.27m)

Трапы: 12' 11" (3.94m)

Скорость, вместимость и масса

Крейс. скорость: 8 Kts. (9 MPH)

Макс. скорость: 10.5 Kts. (12 MPH)

Водоизмещение: 36000 Pounds

Вместимость воды: 265 Gallons

Вместимость сточного бака: 40 Gallons Объем топливного бака: 600 Gallons

Размещение

Всего кают: 2

Всего коек: 2

Всего ком. состава: 2

Корпус и палуба

Материал корпуса: Composite

Информация о двигателе

Двигатели: 2

Производитель: Ford Lehman

Модель: SP135

Тип двигателя: Inboard

Тип топлива: Diesel

ПОДРОБНОЕ ОПИСАНИЕ

MAIN DESCRIPTION

You could easily mistake this boat for one that's at least ten years newer. New main decks, a recent bottom job and engines that have been consistently serviced with a maintenance log and annual oil sample reports for the last nine years. Current owner is a retired engineer whose rigorous approach to maintenance means that this boat could leave the dock tomorrow for that cruise you always wanted to take. BLUEGRASS is a clean, uncluttered classic 42' Grand Banks in excellent condition. She offers twin Ford Lehman 135 HP engines, Westerbeke 8 KW generator, and a 10 foot Walker Bay RIB tender with a Tohatsu 6hp 4-stroke outboard. She has had many new systems and components added in the last few years, including all new Garmin electronics (2015), new fresh water tanks (2015) and a completely new teak main deck (2017).

42' GRAND BANKS WALKTHROUGH

From the aftdeck, you can access the salon from either the port or starboard side door. The guest stateroom and ensuite head are forward and the galley is located port forward. The master stateroom and ensuite head are aft. Engine room access is via salon sole hatches and guest stateroom.

42' GRAND BANKS ACCOMMODATIONS

BLUEGRASS offers a full beam master stateroom aft with an island queen size berth, lots of drawers plus a hanging locker. The master stateroom also features separate ensuite head and shower. The guest stateroom is forward and features a v-berth and ensuite head and shower combination. All windows have curtains and outside screens.

42' GRAND BANKS SALON

The salon offers wrap around seating with storage and a folding teak table starboard aft, side deck access doors port and starboard, two GB style chairs, opening center windshield, liquor and glass storage cabinet, opening side and aft windows with curtains and outside Sunbrella screens and a teak parquet floor. A Weems & Plath clock and barometer are mounted on the aft bulkhead, adding a touch of elegance.

42' GRAND BANKS GALLEY

42' GRAND BANKS GALLEY The galley is located port forward and features the following:- Isotherm AC/DC refrigerator/freezer- Norcold AC/DC refrigerator/freezer- Emerson microwave oven- Farberware toaster oven- Seward Princess 3-burner LP gas cooktop and oven- Propane

detector/alarm- Large stainless steel sink- Ample storage cabinets and drawers

42' GRAND BANKS AUDIO/VISUAL EQUIPMENT

- Vizio 22 inch flat screen HDTV in the salon- Dual stereo Bluetooth/CD player in the salon with speakers in salon and flybridge- Triax TV/FM antenna

42' GRAND BANKS ELECTRONICS

- Garmin 7608 chart plotters (2)- Garmin 740S chart plotters (2)- Garmin GMR-18D Radar- Garmin depth sounder- Garmin GHP Reactor electric-mechanical autopilot with GHC 20 control units at lower helm and flybridge.- Garmin VHF 200 radio at lower helm; ICOM M324 at flybridge- All Garmin equipment integrated on NMEA 2000 backbone- Datamarine DCD400 depth sounder at lower helm - Furono GP-32 GPS at lower helm

42' GRAND BANKS ELECTRICAL SYSTEM

- Westerbeke 8kw generator (5067 hours)- True Charge 40+ battery charger- Xantrex Link 20 battery monitor system- 2 X 8D main engine start/house load batteries (replaced 2020)- 4D generator start battery- Spare 4D battery- 30 and 50 amp shore power cords with 50A/30A pigtail- 50 amp shore power connections fore and aft

42' GRAND BANKS ENGINE/MECHANICAL EQUIPMENT

- Twin Ford Lehman 135 hp engines with approximately 9700 hours each- Twin Borg Warner Velvet Drive transmissions- Morse engine controls- Glendinning synchronizer- Marine Air Systems air conditioning/heating systems (3 zones)- Raritan 12 gallon water heater- Raritan Marine Elegance fresh water toilets with macerators and electric flush- BoatSafe 750W engine room space heater- Extensive spare parts inventory including two spare bronze propellers

42' GRAND BANKS DECK EQUIPMENT

- Ideal anchor windlass with foot controls - Delta anchor with chain rode - CQR spare anchor with 25' chain rode and 250' rope - Danforth spare anchor - Teak decks (main deck replaced in 2017) - Teak rails - Windshield and window covers - Stryker GL-3067 searchlight with 2 remote control units (new 2019) - Mast spreader lights - Raw water washdown forward - Fresh water shower aft - Magma Newport marine gas grill - Teak swim platform with swim ladder

42' GRAND BANKS SAFETY AND FIRE PROTECTION

- 3 fire extinguishers - Fireboy engine room halon fire suppression system with remote alarm/test - Smoke detectors (2); carbon monoxide detectors (2); propane detector/alarm in galley - 2 electric and 1 manual bilge pumps; bilge high water level detector - alarms at lower helm and flybridge - Handheld flares and gun - Jim-Buoy horseshoe life ring

42' GRAND BANKS TENDER

- WalkerBay 10-foot Odyssey SLRH 310 RIB tender (new in 2014) - Tohatsu 6 hp 4-stroke outboard motor (new in 2014) - Towing bridle for tender

42' GRAND BANKS EXCLUSIONS

- Seller's personal belongings and tools

DISCLAIMER

The Company offers the details of this vessel in good faith but cannot guarantee or warrant the accuracy of this information nor warrant the condition of the vessel. A buyer should instruct his agents, or his surveyors, to investigate such details as the buyer desires validated. This vessel is offered subject to prior sale, price change, or withdrawal without notice.

Исключения

При продаже яхты исключаются личные вещи владельца.

Отказ от ответственности

Компания предоставляет описание судна или яхты добросовестно, но не может гарантировать точность этой информации, а также не ручается за техническое состояние. Покупатель должен проинструктировать своих агентов или оценщиков исследовать представленную информацию более подробно, по собственному желанию. Продажа судна или яхты, изменение цены или снятие с продажи будет происходить без предварительного уведомления.

ФОТОГРАФИИ

1 Bluegrass Profile picture



2



3



4



5



6



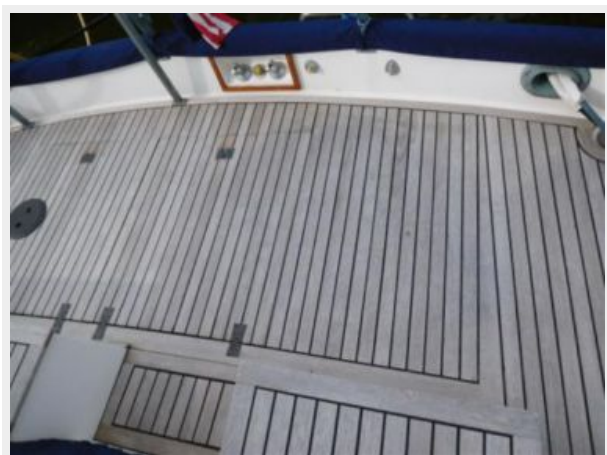
7



8



9



10



11



12



13



14



15



16



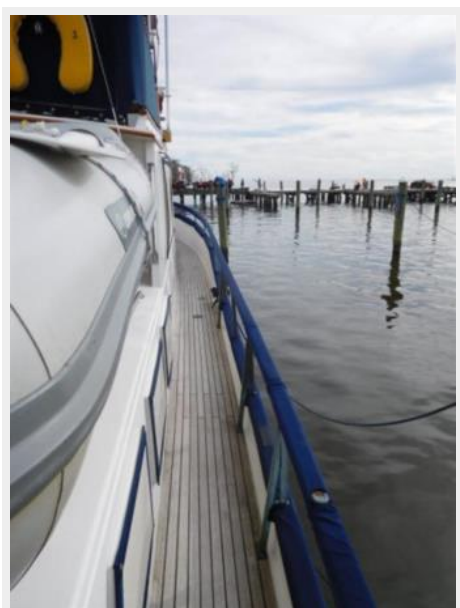
17



18



19



20



21



22



23



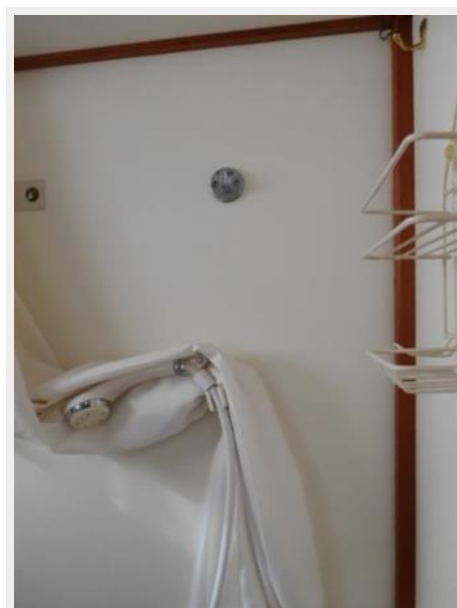
24



25



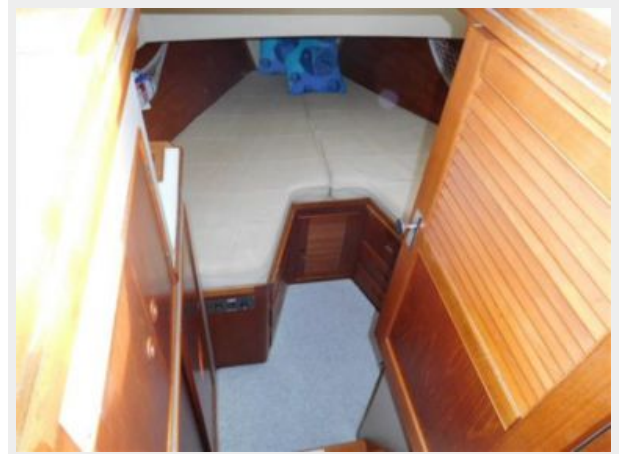
26



27



28



29



30



31



32



33



34



35



36



37



38



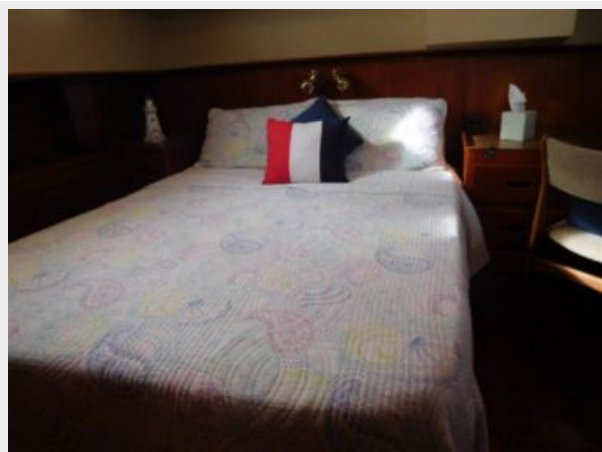
39



40



41



42



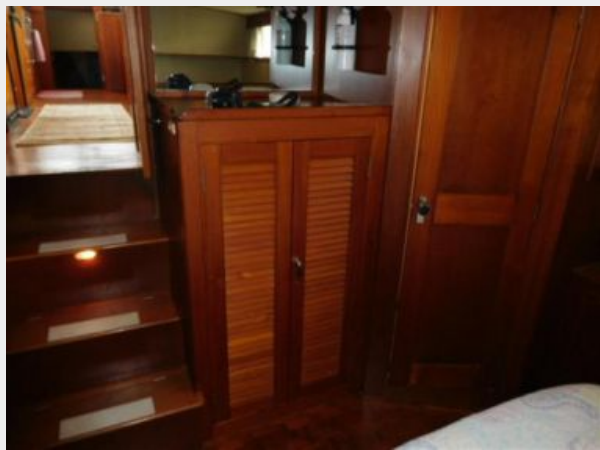
43



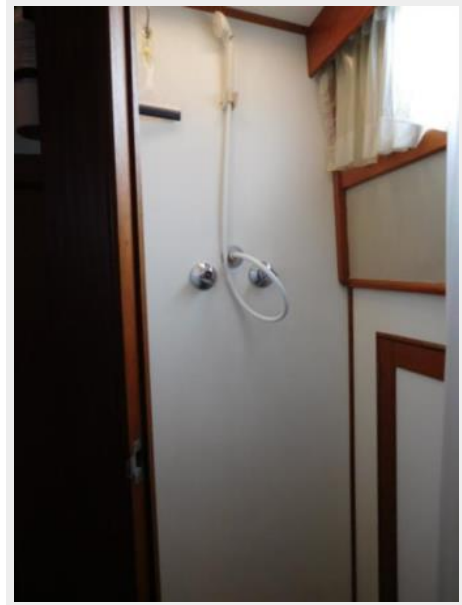
44



45



46



47



48



49



50



51



52



53



54



55



КОНТАКТЫ

Андрей Шестаков (Andrey Shestakov) – ведущий яхтенный брокер отдела продаж яхт и судов компании Shestakov Yacht Sales Inc. Официальный представитель Shestakov Yacht Sales Inc. для русскоговорящих клиентов в центральном офисе компании в Майами/Форт Лодердейл/Флорида/США.

Контактная информация

Email: andrey@shestakovyachtsales.com

Web: shestakovyachtsales.com

Телефоны

Краснодарский край: **+7(918)465-66-44**

США, Майами, Флорида: **+1(954)274-4435**

Время работы

Понедельник – Суббота: **9:00 - 21:00**
EDT

Воскресенье: **Закрыто**

Адрес



Harbour Towne Marina, 850 NE 3rd St,
STE 213, Dania, FL 33004