

SUPEARLATIVE — PEARL MOTOR YACHTS



Судостроитель:

PEARL MOTOR YACHTS

Год постройки: 2012

Модель: Моторная яхта

Цена: ЦЕНА ЯХТЫ ПО ЗАПРОСУ

Местонахождение: United States

Длина общая: 60' 0" (18.29m)

Ширина: 16' 4" (4.98m)

Макс. осадка: 5' 0" (1.52m)

Крейс. скорость: 26 Kts. (30 MPH)

Макс. скорость: 32 Kts. (37 MPH)

Купить **Supearlative — PEARL MOTOR YACHTS** а также выбрать подходящую вам яхту из нашего каталога яхт вам поможет опытный яхтенный брокер Андрей Шестаков. На сегодняшний день компания **Shestakov Yacht Sales Inc.** имеет большое количество яхт в собственном списке продаж, а также тесно сотрудничает со всеми крупными яхтенными производителями по всему миру.

Для того чтобы купить яхту **Supearlative — PEARL MOTOR YACHTS** а также проконсультироваться по любому вопросу связанному с покупкой, продажей, чартером яхт позвоните по телефону **+7(918)465-66-44**.

ОГЛАВЛЕНИЕ

ОГЛАВЛЕНИЕ	2
ХАРАКТЕРИСТИКИ	5
Обзор	5
Основная информация	5
Размеры	5
Скорость, вместимость и масса	5
Размещение	5
Корпус и палуба	6
Информация о двигателе	6
ПОДРОБНОЕ ОПИСАНИЕ	7
Principal Features	7
Deck Features	7
Stainless Steel Fittings	7
Aft Cockpit	8
Upper Helm and Flybridge	8
Salon	8
Salon Helm	9
Galley	9
Aft Stateroom	10
En-Suite Head	10
Forward Stateroom	10
Port and Starboard Guest Staterooms	10
Electric	11
Fuel	11
Freshwater	11
Mechanical	11
Safety	12
Исключения	12

Отказ от ответственности	12
ФОТОГРАФИИ	13
3900215_20120418103620_5_XLARGE	13
60 Pearl 2012 overhead	13
4	13
5	13
60 Pearl 2012 salon	14
3	14
IMG_5851	14
1	14
IMG_5852	15
IMG_5853	15
IMG_5854	15
IMG_5855	15
IMG_5857	16
IMG_5856	16
IMG_5858	16
IMG_5860	16
IMG_5861	16
IMG_5862	16
IMG_5863	17
IMG_5865	17
IMG_5867	17
IMG_5869	17
IMG_5870	17
IMG_5871	17
IMG_5873	18
IMG_5876	18
IMG_5877	18

IMG_5878	18
IMG_5879	18
IMG_5880	18
IMG_5882	19
IMG_5881	19
IMG_5883	19
IMG_5884	19
IMG_5885	19
КОНТАКТЫ	20
Контактная информация	20
Телефоны	20
Время работы	20
Адрес	20

ХАРАКТЕРИСТИКИ

Обзор

"Superlative" a 2012 Pearl 60 oozes style and sophistication. The stunning interior is finished in American walnut joinery with black granite and Avonite surfaces, contemporary fittings and almond leather upholstery. This luxury aft cabin motor yacht is remarkably spacious with four sumptuous cabins and exhilarating performance. Her power comes from 2 Volvo Penta D13 800hp engines producing a top speed of 32 knots.

Основная информация

Тип судна: Моторная яхта	Подкатегория: Flybridge
Модельный год: 2012	Год постройки: 2012
Страна: United States	Открытая палуба мостика: Да

Размеры

Длина общая: 60' 0" (18.29m)	Ширина: 16' 4" (4.98m)
Макс. осадка: 5' 0" (1.52m)	

Скорость, вместимость и масса

Крейс. скорость: 26 Kts. (30 MPH)	Макс. скорость: 32 Kts. (37 MPH)
Вместимость воды: 154 Gallons	Объем топливного бака: 616 Gallons

Размещение

Всего кают: 4	Всего ком. состава: 3
----------------------	------------------------------

Корпус и палуба

Материал корпуса: Fiberglass

Информация о двигателе

Двигатели: 2

Производитель: Volvo

Модель: D13

Тип двигателя: Inboard

Тип топлива: Diesel

ПОДРОБНОЕ ОПИСАНИЕ

Principal Features

- Contemporary American Walnut Joinery
- Asea AC convertor Model AC12
- 13KW Generator
- Bow Thruster 9hp
- Stern Thruster
- Gamin Series Chart Plotter, radar and GPS
- 32" LCD TV
- Leather Upholstery in Salon and Flybridge Bimini
- Fixed Solid Teak Aft Deck Table
- Duel Station Gamin Colour
- Dishwasher
- Flybridge tonneau cover
- Electronic engine controls

Deck Features

- Hydraulically operated bathing platform
- Electrically operated aft deck sunroof system
- Teak laid aft deck and bathing platform
- Moulded non-slip deck with recessed area for coach roof sun cushions
- Fitted heavy duty stainless steel rubbing strake with white nylon carrier
- Hot and cold transom shower
- Water and fuel fillers
- Full set of IMCO navigation lights

Stainless Steel Fittings

- Twin rail pulpit
- Flybridge hand rails
- Electric anchor winch
- Stainless steel 30kg bruce anchor with 60m chain
- Stainless steel bow roller for automatic launch and recovery
- Hydraulic remote control passarelle
- Twin stainless steel bow and stern cleats
- Twin midship and platform cleats
- Heavy duty forward fairleads

- Heavy duty aft fairleads
- Bathing ladder
- Stainless steel horn

Aft Cockpit

- Cushioned seating incorporating storage lockers
- Teak laid steps to flybridge and bathing platform
- Recessed high and low level waterproof lighting
- Manual bilge pumps
- Twin cockpit doors
- Hinged dodger lids containing capstan mooring winches, cleats and fender bins
- Hinged locker containing fuel shut-off levers, fire extinguishers and engine room fire extinguisher override.

Upper Helm and Flybridge

- Twin helm seat w/ cup holders
- Laminated high gloss instrument panel and carbon fiber steering wheel
- Hydraulic steering
- Cableless electronics single lever engine controls
- Full engine instrumentation autopilot Garmin GHC 10
- Digital speed and depth gauges - depth - Garmin GMI 10
- VHF radio
- Controls for trim tabs, anchor winch and Jepsco searchlight
- Switches for bilge pumps, horn and navigation lights
- High speed magnetic Ritchie compass
- Upholstered seating area with storage
- Stainless steel framed smoked acrylic wind deflector
- Waterproof speakers for hi-fi system with remote control for Sony system
- Helm position indicator
- Foldaway table
- Barbecue and sink unit with drink Vitrifrido fridge below
- Twin Garmin GPS map 5012 Displays
- Bow/ Stern thruster controls
- Yacht controller

Salon

- Electrically operated stainless steel framed patio door to aft deck

- Entrance stairway with acrylic handrail and step treads
- U shaped settee with low level coffee table
- Halogen lighting incorporated into suede-lines ceiling panels
- Fitted CD/radio with concealed speakers
- Electrically operated forward side windows
- Bonded windscreen and windows
- Electrical control panel including controls for AC/DC and generator
- Semicircular dinette seating area and fixed table
- Wood slat blinds fitted to aft salon windows
- Sony Bravia rise/fall flat screen TV

Salon Helm

- Electric side windows
- Twin helm seat
- Generator start/stop switch
- Laminated high glass instrument panel and carbon fiber steering wheel
- Hydraulic carbon fiber steering wheel
- Cableless electronic single lever engine controls
- Full Volvo engine instrumentation
- Digital speed and Garmin GMI 10 depth gauges
- VHF radio Garmin GHS 10i
- Controls for trim tabs, anchor, winch and bow thruster/stern thruster
- Switches for windscreen wipers, bilge pumps, horn and navigation lights
- High speed magnetic compass
- Helm position indicator
- Garmin GPS map 5012
- Autopilot Garmin GHC 10
- Sony stereo

Galley

- Comprehensively fitted galley
- Integrated four-plate halogen stove top with combination Neff microwave/conventional oven and electric grill
- Domestic fridge freezer
- Dedicated crockery and cutlery storage
- Uniquely designed built-in storage cupboards and drawers
- Sink and drainer with hot and cold mixer tap
- Concealed lighting
- Extractor fan
- Pearl crockery and cutlery set

- Neff dishwasher

Aft Stateroom

- 6'6" x 5'6" bed with fully sprung mattress
- Halogen lighting
- Twin reading lights
- Dressing table
- Twin hanging wardrobe
- Seating area
- Opening escape hatch to aft deck
- High level air-conditioning soffit
- Stainless steel opening portholes with fly screens and blinds
- Mirrors

En-Suite Head

- Fitted electric marine toilet
- Wash basin with mixer taps and storage cupboard below
- Separate shower with acrylic door and automatic pump-out
- Extractor fan
- Mirror
- Stainless steel opening porthole with blind

Forward Stateroom

- Double bed with fully sprung mattress with storage below
- Halogen lighting
- Twin reading lights
- Twin hanging wardrobe
- Side vanity units
- High level air-conditioning soffit
- Opening deck hatch and stainless steel portholes with flyscreen and blind
- Forward bulkhead mirror

Port and Starboard Guest Staterooms

- Two single berths
- Halogen lighting and individual reading lights
- Shelved storage cupboard

- Neff combo washer/dryer (starboard cabin only)
- Stainless steel opening porthole with flyscreen and blind
- Bedside unit with storage drawers
- Mirror

Electric

- 13 KVA generator providing 240v supply
- Polarity check system, power points in aft stateroom, salon, galley, forward stateroom and forward guest cabins
- 220/240v shore power supply
- Heavy-duty batteries for engine starting and domestic supply
- 100amp battery charger with split charging system
- All circuits protected by circuit breakers controlled from main control panel

Fuel

- Twin enameled aluminum fuel tanks total capacity 2800 liters
- High capacity water separators and fuel filters
- Emergency fuel shut-off levers in aft cockpit

Freshwater

- 700 liters capacity water tanks including calorifier
- Automatic pressurized water system with pump and filter
- Water tank contents gauge
- Holding tanks with contents gauges and pump-out from deck outlet or through hull
- Single skin fitting waster outlet system

Mechanical

- Soundproofed engine bay with high power extractor fans
- Water-cooled exhaust with underwater outlets
- Integrally bonded fore and aft bulkheads
- P brackets and four-blade propellers constructed from nickel aluminum bronze
- Balanced rudders
- Cathodic protection
- Stern gear engines, tanks are electrically bonded

Safety

- Automatic fire extinguishers in engine and generator room with auto shut down and alarm indicator panel on helm position
- Hand-operated fire extinguishers in all cabins, galley and on deck
- Automatic bilge pumps with manual override in forward bilge, aft bilge and engine room
- Externally operated manual bilge pumps in aft cockpit

Исключения

При продаже яхты исключаются личные вещи владельца.

Отказ от ответственности

Компания предоставляет описание судна или яхты добросовестно, но не может гарантировать точность этой информации, а также не ручается за техническое состояние. Покупатель должен проинструктировать своих агентов или оценщиков исследовать представленную информацию более подробно, по собственному желанию. Продажа судна или яхты, изменение цены или снятие с продажи будет происходить без предварительного уведомления.

ФОТОГРАФИИ

3900215_20120418103620_5_XLARGE



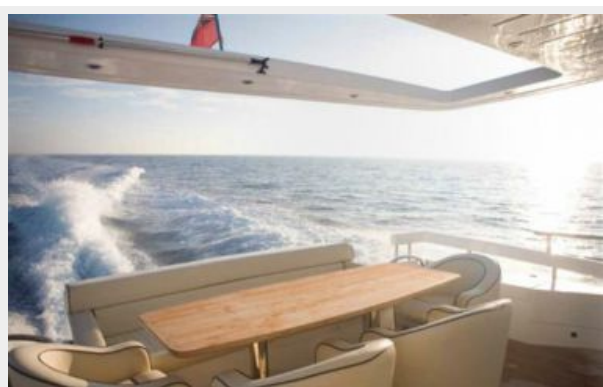
60 Pearl 2012 overhead



4



5



3



60 Pearl 2012 salon



IMG_5851

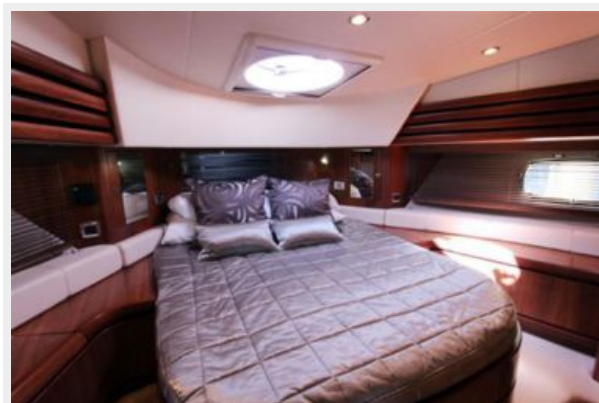
1



IMG_5852



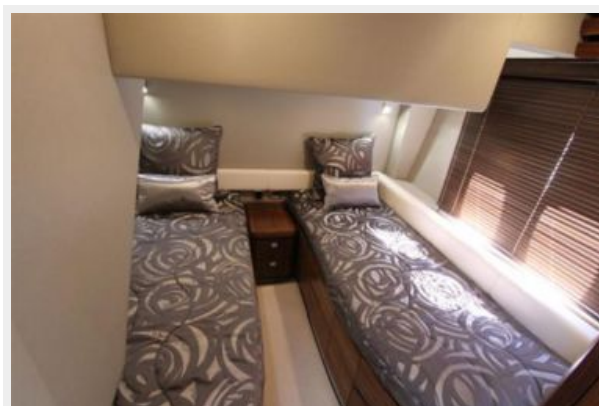
IMG_5853



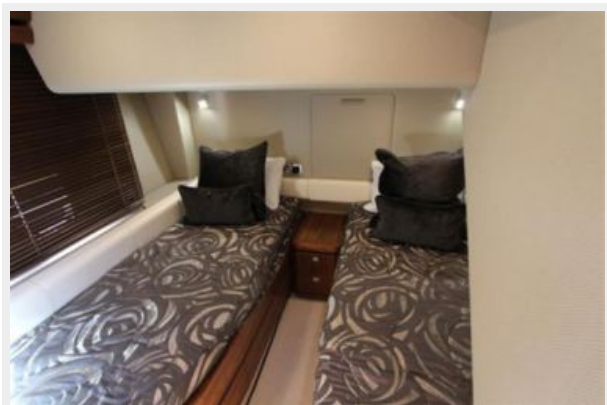
IMG_5854



IMG_5855



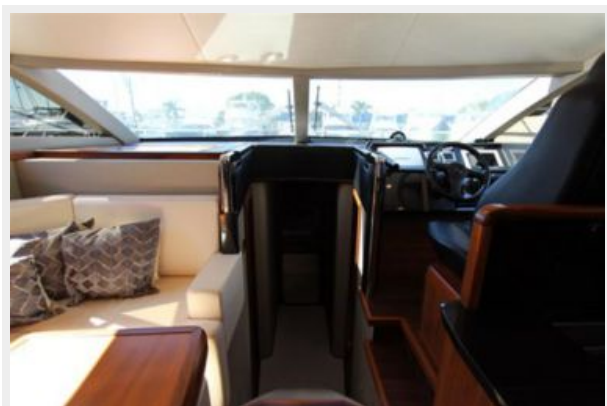
IMG_5856



IMG_5857



IMG_5858



IMG_5860



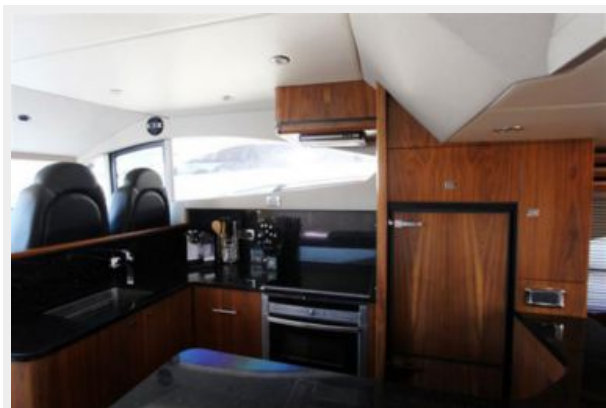
IMG_5861



IMG_5862



IMG_5863



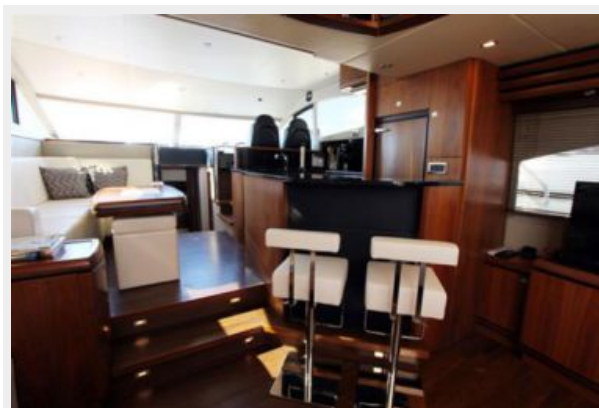
IMG_5865



IMG_5867



IMG_5869



IMG_5870



IMG_5871



IMG_5873



IMG_5876



IMG_5877



IMG_5878



IMG_5879



IMG_5880



IMG_5881



IMG_5882



IMG_5883



IMG_5884



IMG_5885



КОНТАКТЫ

Андрей Шестаков (Andrey Shestakov) – ведущий яхтенный брокер отдела продаж яхт и судов компании Shestakov Yacht Sales Inc. Официальный представитель Shestakov Yacht Sales Inc. для русскоговорящих клиентов в центральном офисе компании в Майами/Форт Лодердейл/Флорида/США.

Контактная информация

Email: andrey@shestakovyachtsales.com

Web: shestakovyachtsales.com

Телефоны

Краснодарский край: **+7(918)465-66-44**

США, Майами, Флорида: **+1(954)274-4435**

Время работы

Понедельник – Суббота: **9:00 - 21:00**
EDT

Воскресенье: **Закрето**

Адрес



Harbour Towne Marina, 850 NE 3rd St,
STE 213, Dania, FL 33004