

NOEMA — BENETEAU



Builder: BENETEAU

Year Built: 1994

Model: Cruising/Racing Sailboat

Price: PRICE ON APPLICATION

Location: France

LOA: 53' 0" (16.15m)

Beam: 14' 9" (4.50m)

Max Draft: 8' 0" (2.44m)

Cruise Speed: 9 Kts. (10 MPH)

Max Speed: 11 Kts. (13 MPH)

Our experienced yacht broker, Andrey Shestakov, will help you choose and buy a yacht that best suits your needs **Noema — BENETEAU** from our catalogue. Presently, at Shestakov Yacht Sales Inc., we have a wide variety of yachts available on our sale's list. We also work in close contact with all the big yacht manufacturers from all over the world.

If you would like to buy a yacht **Noema — BENETEAU** or would like help answering any questions concerning purchasing, selling or chartering a yacht, please call **+1(954)274-4435**

TABLE OF CONTENTS

TABLE OF CONTENTS	2
SPECIFICATIONS	4
Overview	4
Basic Information	4
Dimensions	4
Speed, Capacities and Weight	4
Accommodations	5
Hull and Deck Information	5
Engine Information	5
DETAILED INFORMATION	6
1995 Beneteau 53	6
Exclusions	6
Disclaimer	6
PHOTOS	8
Photo Noema 274	8
20160206_180140_Richtone(HDR)	8
2019-03-13 10.52.34	8
2019-03-13 11.09.16	8
2019-03-15 13.56.54	9
2019-03-13 10.40.00	9
2019-03-13 10.41.16	9
2019-03-13 10.43.24	9
2019-03-13 10.42.07	10
2019-03-13 10.43.31	10
plan_noema (Copier)	10
CONTACTS	11
Contact details	11
Telephones	11

Office hours	11
Address	11

SPECIFICATIONS

Overview

Noema is a First 53 F 5 in a 4 cabin version. This Farr plan is a good walker in light and medium weather. Its name "First" is misleading because it no longer corresponds to the name of the current regatta range. It is rather a good multi-purpose sailboat. Noema her first 5 years in the West Indies - it was more a financial product of tax exemption !!). she is currently based in Saint-Malo, and is ready to sail for the West Indies or others. Cockpit table, forepeak for storage, large anchor locker, large water and fuel capacity, it is designed for the open sea as well as for enjoying life on board. Its equipment and configuration make it suitable for sailing in the sun (Caribbean, Mediterranean, etc...). Reasonable draft (2,45), new standing rigging. Its 4 independent cabins allow either for a "charter" type navigation or a comfortable trip for a family in need of space. Regularly maintained, she will seduce you with her spacious saloon and her great autonomy. An accompaniment of handing-over is possible. Noema is ready to sail away

Basic Information

Category: Cruising/Racing Sailboat

Sub Category: Cruising Sailboat

Model Year: 1994

Year Built: 1994

Country: France

Dimensions

LOA: 53' 0" (16.15m)

LWL: 43' 4" (13.21m)

Beam: 14' 9" (4.50m)

Max Draft: 8' 0" (2.44m)

Speed, Capacities and Weight

Cruise Speed: 9 Kts. (10 MPH)

Max Speed: 11 Kts. (13 MPH)

Water Capacity: 106 Gallons

Holding Tank: 106 Gallons

Fuel Capacity: 118 Gallons

Accommodations

Total Cabins: 4

Crew Heads: 8

Hull and Deck Information

Hull Material: Fiberglass

Engine Information

Engines: 2

Manufacturer: LAMBORGHINI

DETAILED INFORMATION

1995 Beneteau 53

Accommodations

4 doubles cabines with private toilet.

Galley Equipment

Deep Double stainless steel sinks Gimballed 3 burner stove/oven (Force 10) Pressurized hot and cold water system

Electronics and Navigation

NKE electronic centrale giro pilotloch, speedo, deph inside and outside computer with charts and AIS system GPS Furuno gp 32vhf ASNEPIRB

Electrical System

3 batteries parc 140 Watts of rigid mounted solar panels converter 220/12 v

Sails and Rigging

roller geno main sail on Harken track mast staysail jib on droplable forestay (2015) spinnaker storm jib brand new one electric winch

Additional

Inflatable Tender/Dinghy with yamaha 6 HP bimini large anchor locker 12V Fans Mounted Throughout Interior Layout new tiller system mast an rig completely overhauled

Located in Saint-Malo France

Exclusions

Owner's personal belongings.

Disclaimer

The Company offers the details of this vessel or yacht in good faith but cannot guarantee or warrant the accuracy of this information nor warrant the condition of the vessel. A buyer should instruct his representatives, agents, or his surveyors, to investigate such details as the buyer

desires validated. This vessel or yacht is offered subject to prior sale, price change, or withdrawal without notice.

PHOTOS

Photo Noema 274

20160206_180140_Richtone(HDR)



2019-03-13 10.52.34



2019-03-13 11.09.16



2019-03-15 13.56.54



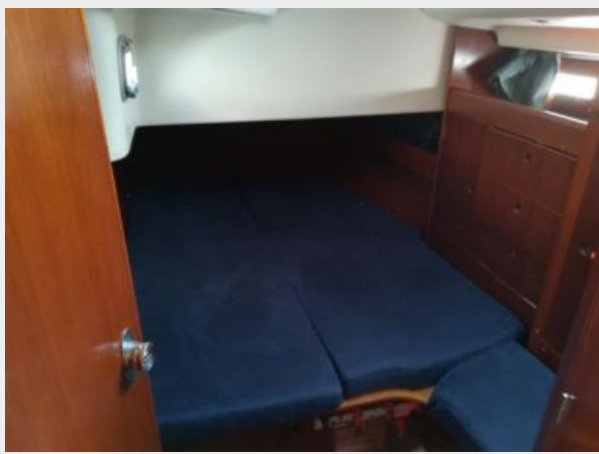
2019-03-13 10.40.00



2019-03-13 10.41.16



2019-03-13 10.43.24



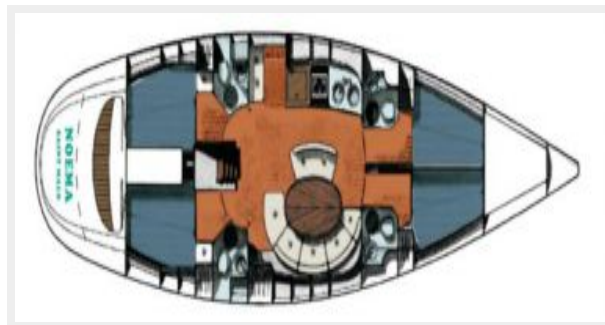
2019-03-13 10.42.07



2019-03-13 10.43.31



plan_noema (Copier)



CONTACTS

Andrey Shestakov, leading yacht broker of the sales department of Shestakov Yacht Sales Inc. Shestakov Yacht Sales Inc., the official representative of the Miami/Fort Lauderdale FL headquarters.

Contact details

Email: andrey@shestakovyachtsales.com

Web: shestakovyachtsales.com/en/

Telephones

USA: +1(954)274-4435

Office hours

Monday – Saturday: **9:00 - 21:00** EDT

Sunday: **closed**

Address



Harbour Towne Marina, 850 NE 3rd St,
STE 213, Dania, FL 33004