

## LONTANO — FERRETTI YACHTS



**Builder:** FERRETTI YACHTS

**Year Built:** 2016

**Model:** Motor Yacht

**Price:** PRICE ON APPLICATION

**Location:** Colombia

**LOA:** 96' 0" (29.26m)

**Beam:** 22' 1" (6.73m)

**Max Draft:** 7' 3" (2.21m)

**Cruise Speed:** 26 Kts. (30 MPH)

**Max Speed:** 30 Kts. (35 MPH)

Our experienced yacht broker, Andrey Shestakov, will help you choose and buy a yacht that best suits your needs **Lontano — FERRETTI YACHTS** from our catalogue. Presently, at Shestakov Yacht Sales Inc., we have a wide variety of yachts available on our sale's list. We also work in close contact with all the big yacht manufacturers from all over the world.

If you would like to buy a yacht **Lontano — FERRETTI YACHTS** or would like help answering any questions concerning purchasing, selling or chartering a yacht, please call **+1(954)274-4435**

# TABLE OF CONTENTS

---

TABLE OF CONTENTS	2
SPECIFICATIONS	3
Overview	3
Basic Information	3
Dimensions	3
Speed, Capacities and Weight	3
Accommodations	4
Hull and Deck Information	4
Engine Information	4
DETAILED INFORMATION	5
DETAILS	5
Exclusions	9
Disclaimer	9
PHOTOS	10
96' Ferretti 2016 Lontano - Layout Drawing	16
CONTACTS	17
Contact details	17
Telephones	17
Office hours	17
Address	17

# SPECIFICATIONS

---

## Overview

---

Lontano is in excellent condition throughout and has been properly maintained. She has low engine hours and is well equipped.

## Basic Information

---

**Category:** Motor Yacht

**Sub Category:** Flybridge

**Model Year:** 2016

**Year Built:** 2016

**Country:** Colombia

## Dimensions

---

**LOA:** 96' 0" (29.26m)

**LWL:** 73' 3" (22.33m)

**Beam:** 22' 1" (6.73m)

**Max Draft:** 7' 3" (2.21m)

**Clearance:** 32' 0" (9.75m)

## Speed, Capacities and Weight

---

**Cruise Speed:** 26 Kts. (30 MPH)

**Max Speed:** 30 Kts. (35 MPH)

**Gross Tonnage:** 125 Pounds

**Water Capacity:** 349 Gallons

**Holding Tank:** 87 Gallons

**Fuel Capacity:** 2378 Gallons

## Accommodations

---

**Total Cabins:** 5

**Total Berths:** 5

**Sleeps:** 10

**Total Heads:** 6

**Crew Cabin:** 3

**Crew Berths:** 5

**Crew Sleeps:** 5

**Crew Heads:** 2

## Hull and Deck Information

---

**Hull Material:** Fiberglass

## Engine Information

---

**Engines:** 2

**Manufacturer:** MTU

**Model:** 16V 2000 M95CR

**Engine Type:** Inboard

**Fuel Type:** Diesel

---

# DETAILED INFORMATION

---

## DETAILS

---

### REMARKS:

Lontano is in excellent condition throughout. She has a contemporary interior with lots of windows and open areas, including a sliding glass door in the main salon opening to wide walk-around side decks. The on-deck master is spacious with full-length windows on both sides and a large master bath with an over-sized shower, double sink, toilet and bidet, and a large walk-in closet. The four guest staterooms below all have queen beds and large baths with toilets and bidets. The crew quarters accommodate five including a separate captain's cabin. The aft deck, foredeck, and flybridge are well laid out and spacious for a yacht of this size. With a 30 knots capability, and comfortable cruising speed of 25 knots, Lontano is ideal for coastal cruising and island hopping. Low engine hours and proper maintenance make this relatively new boat a great value at her asking price, but this serious seller is ready to make a deal, and will consider larger similar-styled boats in trade.

### BUILDER'S DESCRIPTION:

The Ferretti 960 is the largest fast pleasure boat built by Ferretti. Ferretti Yachts 960 features an unparalleled livability. It is the first yacht of the brand with the owner cabin located on the main deck and four VIP cabins on the lower deck each equipped with its own en-suite facility, enormous windows for natural light and portholes for ventilation. The yacht offers numerous attributes normally reserved for larger vessels, including 3 crew cabins of which 1 is exclusively for the captain as well as a separate access to the crew quarters directly from the galley. The flybridge at the stern area is entirely devoted to leisure. The garage door is fitted with cushions for sunning, while the swim platform can be immersed in the water to allow for the launching of the tender in just a matter of minutes from the floodable garage without the need of a davit: a system which has set the benchmark in the industry for a never before seen solution on a vessel of this size. The vessel is equipped with electro-hydraulic fins with both the zero-speed and underway features, giving owners an incredibly elevated level of stability to reduce roll and ensure maximum comfort onboard, at anchor and during navigation. This is a truly exceptional motoryacht, which must be experienced to be fully appreciated.

**ACCOMMODATIONS:** This 5 stateroom motoryacht has an on-deck master and four staterooms below, all with ensuite heads, and a powder room on the main deck. Plus she carries 5 crew in 3 cabins with two heads.

**Owner's Cabin:** King sized berth Large Samsung 54" TV on aft bulkhead  
Planus head system

**Port and Starboard Aft Guest Staterooms/Cabins:** 4 symmetrical queen-berth guest staterooms on

the lower deck Ensuite head with large stall type shower and glass door, bidet, Planus head.

Laundry: Single MIELE W3033 Washer MIELE T8023 Clothes Dryer

Galley / Crew Dinette: L Shaped Corian counter-top faced forward bulkhead and outboard with dual sink and disposal, 5-burner glass top stove and oven G.E. Side-by-side fridge freezer G.E. Microwave against inboard bulkhead Miele Dishwasher in outboard counter-top

#### AUDIO / VISUAL EQUIPMENT:

Salon audio/ visual equipment: Salon and Master Samsung smart 54-inch TV Samsung Blue Ray player Apple TV DirecTV satellite receiver Crestron universal remote control Four (4) ceiling speakers

Guest four (4) SRs audio/visual equipment: Samsung smart 48-inch TV DirecTV H24 satellite receiver Crestron Control

Outside audio equipment: Fusion MS-AV650 player

#### MECHANICAL:

Main Engines: Manufacturer : MTU Model: 2 X 16V2000 Power : 2600HP/1939 KW @ 2450 RPM  
Hour meter: Port 866, Starboard 876 Engine model No.: Port 16V2000M95CR, Starboard 16V2000M94CR Engine serial No.: Port 545100245, Starboard 545100247 Gear Manufacturer: ZF ZFGear model No.: 3070V 3070VGear serial No.: 50037377 50037376 Ratio: 2.520 to 1A

Generators: No. Of Sets: (2) x single phase Manufacturer: Cummins Onan Model: 29MDKDS spec-A Rating: 29 Kw/Kva 240/120Vac @ 60Hz Protection: 2 x 429 Amp breaker on the generator Hours: Port - 1303 hrs. Starboard- 1313 hrs. as of 3/21/20 Stabilizers & Thrusters: Manufacturer: Side Power digital stabilizers. Type: Underway and At Anchor System SO: 27880, actuator 250, fin size (6 sq. ft) Power supply: Variable displacement Rex Roth pumps off port and starboard gearboxes. Oil reservoir & oil cooler: Siam reservoir and oil cooler port aft corner of engine room

Air Conditioning: Type: Chilled/ tempered water Manufacturer: Condaria Model: 2PCWM SCL 22503 1-12 MAVGas: R407C Rated BTU: 90,000 BTU Each

Watermaker: Seafari Versatile Model: HCI 1400 SN # 03257372415, produces 1400 GPD of fresh water

#### ELECTRICAL:

Converter: Manufacturer: ASEA 2 x Model: 607-582-24KVA: 24Fwd. SN: 60700356-24 Aft SN: 60700357-24

Shore Power: No. of Connections: (2) Rating: 100 Amps each Type: Hubble Cable Reel: 2 x Glendenning CM8

AC system: 2 x Cummins Onan 32 KW MDKBU 2 x TMAI OTMC 25 kVA 50/60 Shore Power connections 1 x Main control and distribution panel 1 x Mastervolt MassCombi 24/4000-100 Inverter 1 x Mastervolt MassCombi 24/2500-60 Inverter 2 x Mastervolt Mass 24/75-C chargers 1 x Mastervolt 12-volt Charger

The DC system: 2 x 24V Main Engine Start Batteries 12 x 2V Service Batteries 2 x 12V Generator start battery 2 x 24V 75A Mastervolt battery charger 2 x 12V 10A Mastervolt battery charger

#### DECK EQUIPMENT:

Cranes: Davit: Besenzoni Model: A06-050001

Passerelle: Type: Besenzoni stainless steel 3-section Features: Pop-up hand rails, teak tread walkway with blue LED light extends 57" past end of swim platform. 150 up and down with auto center when retracting

Ground Tackle: Anchor: (2) x 100 kg galvanized POOL anchors Chain: 120 m length 13mm diameter chains Anchor windlass and warping capstans were tested during the sea trial by lowering to the waterline and free spooling in 100' of water retrieval time is approximately 1 min 35 sec Windlass: No. of Sets: (2) Manufacturer: Lofrans Model: Project X5, 3000 Controls: Remote QUICK Handsets (Test operated) Port SN: PJX50001233 STBD SN: PJX50001232

Warping Capstans: No. of Sets: (2) Location: Port and starboard aft Manufacturer: Lofrans Model: 24vdc Controls: Reversible foot buttons (Test operated)

#### ELECTRONICS AND NAVIGATIONAL AIDS:

2 x Furuno 17" touch screen; display radar, chart plotter with Max Sea Time Zero, Color depth sounder (Wheelhouse and Flying bridge) 2 x 15" Monitors Ships alarms and CCTV Furuno autopilot (Wheelhouse and Flying bridge) Furuno depth speed log 2 x Simrad HS90 VHF FURANIA 4" magnetic compass no deviation card provided Furuno FA-170 AIS (4) Furuno RD33 displays flat panel LCD Ferretti marine monitoring system with following operations: Control (lights, instruments, pumps, air conditioning), Status (batteries, VAC, smoke, generators, shore power), Navigation (weather, computer trip), Alarms, Set up, Ship's fire alarm system INIM smart line

SAFETY EQUIPMENT: 2 x EPIRB 406 MHz - Fire detection system 2000 GPH Submersible pumps in all bilges (8) Emergency engine room bilge pumping eductors off main engines. Engine room Fire Boy system HSC 227 EA (2 systems) Next inspection June 2020 Hand held fire extinguishers next inspection June 2020 Emergency fuel closing valves 2 x 8-man canister life rafts with hydrostatic releases next inspection 04/2022 MOB throwing slinging and throw ring One set of international running lights. Air Horn ACR Searchlight- reported to give poor lighting 4 windshield wipers with wash water- operational CCTV monitoring 3 cameras Flare kit. July 2019 ACR Cat 1 EPIRB 406 MHz Port Boson locker with Life Sling MOB Rescue sling and fuel

shut off pullsTwo Revere Survival Inc. canister life rafts. Next service is 4/22

## ORIGINAL FACTORY OPTION LIST:

Hard top version dark metallic gray600 kg capacity davit on flybridgeStabilizing fins - zero speedUpgraded waterline stripeConverter A/Sea ac24kvao out 120v 60hzRadar antenna painted in gray colorA/C monitoring and control pageAutomatic cable reel and remote controlUpgraded microwave in galleyRaritan icemakerTV electric raising device for TV 55" in salonTV 55" in master cabinTV 48" in VIP cabinTV 48" in guest cabinUpgraded galley ernestomedaUpgraded salon cupboard doors lacquered corda colorCabinet doors lacquered in tortora color diff. Master bathroomMaster cabin upholstery in saddle leatherLd cabins upholstery in saddle leatherUpgraded/Modified TV frame in master cabinTV in cabins flash-mountedLighting rod beneath the bedStrip led under steps to flybridgeStrip led under steps to transomBimini with poles on the upper sun deckUpgraded lacquered panels at ceilingTVCC: internal color camera additionalTVCC: external color camera, additionalDecoder SAT HD (6)Upgraded floor marble bathroomsWindows' inner structure lacqueredParquet custom flooring for main deckFitted carpets in salon and master cabinUpgraded bed headboard in the cabinsOne touch up/down electric blinds vip/guest (4)Cabin staircase steps upholstered in saddle leatherCorda saddle leather tops in salon cupboardsCustom flooring for main helm2° cooking top Teppan Yaki on flybridge, incl. ModificationModification to step in master cabinStrip led under step in master cabinUpgraded upholstery of bridge pilot seat and sofaUpgraded full Furuno TZTUpgraded master bedhead lights Central lamp porta romanaMove down the light switches and socketsDining table roda spinnaker on flybridgeDining chairs Dedon Seax on flybridge (8)Upgraded salon sofaUpgraded coffee tableUpgraded dining tableUpgraded dining chairsUpgraded external cushions in alcantara outdoorUpgraded pilot and copilot seats on fly in alcantaraUpgraded external speakers JL brand (pair)Additional chart map (up to Maine)Curtains different from standard sienna typeAdditional spot lights at ceiling in master cabinUpgraded mini Fusion AV750 cd/dvd (4)Hifi surround: "2+1" systemEmpty dome for KVH TV6Telephone interface gsm/gprs voice/fax AmericaUpgraded higher fly aft railingStool for bar on fly (2)Antenna TV SAT HD7 Tri-americasUpgraded bedspreadAssorted decorative cushions in salon, master, guest, forward, aft and VIP cabinsFly furnitureCockpit furnitureUpgraded Led lights (int/ext) all over the boatUpgraded manual glass door on lateral side of the saloonLights underwater light (8)Light underwater light watertightShore fresh water intakeDimmer lights in cockpitGarbage container in the cockpitControl station in the cockpit fixed with coverControl station on flybridgeDimmer lights in saloonUpgraded electric sliding saloon doorOne touch up/down electric curtains salonWastemincer in galleySliding twin beds in guest cabinsLighting for stairs towards cabinsOne touch up/down electric blinds master cabin (3)One touch up/down electric curtains VIP/guestSmoke separator for gen. (22,527kw) 3" (2)Stern thruster 50 HP hydraulic (double propeller)Upgraded big shower w/led (master bathroom)Helm seat in main deck with electric deviceStrip led bed headboard and window frames master cabinStrip led behind window frames in lower deck cabinsUpgraded light panels above dining tablePainting n°2 dome color greyUpgraded teak floor with gray caulkingTeak on fly with gray caulkingWatermaker horizon Seafari diff.Searchlight electrically controlled (big rectangular)



---

## Exclusions

---

Owner's personal belongings.

---

## Disclaimer

---

The Company offers the details of this vessel or yacht in good faith but cannot guarantee or warrant the accuracy of this information nor warrant the condition of the vessel. A buyer should instruct his representatives, agents, or his surveyors, to investigate such details as the buyer desires validated. This vessel or yacht is offered subject to prior sale, price change, or withdrawal without notice.

# PHOTOS



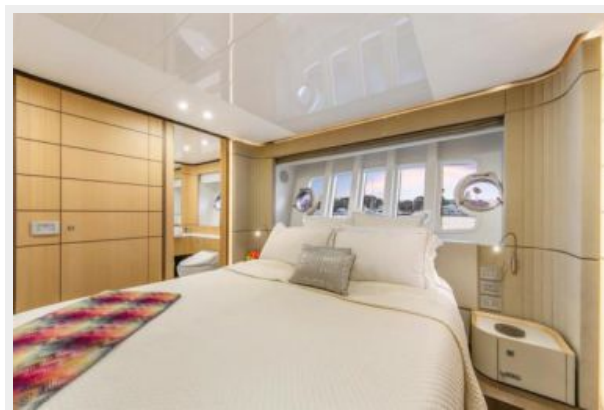
















## 96' Ferretti 2016 Lontano - Layout Drawing





# CONTACTS

---

Andrey Shestakov, leading yacht broker of the sales department of Shestakov Yacht Sales Inc. Shestakov Yacht Sales Inc., the official representative of the Miami/Fort Lauderdale FL headquarters.

## Contact details

---

Email: **andrey@shestakovyachtsales.com**

Web: [shestakovyachtsales.com/en/](http://shestakovyachtsales.com/en/)

## Telephones

---

USA: **+1(954)274-4435**

## Office hours

---

Monday – Saturday: **9:00 - 21:00 EDT**

Sunday: **closed**

## Address

---



Harbour Towne Marina, 850 NE 3rd St,  
STE 213, Dania, FL 33004