

## INVISION — WESTSHIP



**Builder:** WESTSHIP

**Year Built:** 2001

**Model:** Motor Yacht

**Price:** PRICE ON APPLICATION

**Location:** United States

**LOA:** 132' 0" (40.23m)

**Beam:** 28' 0" (8.53m)

**Max Draft:** 7' 5" (2.26m)

**Cruise Speed:** 14 Kts. (16 MPH)

**Max Speed:** 17 Kts. (20 MPH)

Our experienced yacht broker, Andrey Shestakov, will help you choose and buy a yacht that best suits your needs **INVISION — WESTSHIP** from our catalogue. Presently, at Shestakov Yacht Sales Inc., we have a wide variety of yachts available on our sale's list. We also work in close contact with all the big yacht manufacturers from all over the world.

If you would like to buy a yacht **INVISION — WESTSHIP** or would like help answering any questions concerning purchasing, selling or chartering a yacht, please call **+1(954)274-4435**

# TABLE OF CONTENTS

TABLE OF CONTENTS	2
SPECIFICATIONS	6
Overview	6
Basic Information	6
Dimensions	6
Speed, Capacities and Weight	7
Accommodations	7
Hull and Deck Information	7
Engine Information	7
DETAILED INFORMATION	8
Overview	8
Main Salon	8
Accommodations	8
Master Stateroom	8
Guest Staterooms	8
Galley / Dinette	9
Skylounge	9
Aft / Flybridge	9
Pilothouse	9
Communication and Navigation Equipment	9
Entertainment Systems	10
Main Machinery	11
Electrical Systems	12
Safety, Security and Fire Fighting Equipment	12
Tenders and Toys	12
Upgrades	13
Exclusions	13
Exclusions	14

Disclaimer	14
PHOTOS	15
Main Salon	15
Main Salon	15
Main Salon	15
Main Salon into Dining Area	15
Dining Area	15
Dining Area	15
Salon Stairway	16
Master Stateroom	16
Master Stateroom	16
Master Stateroom	16
Master Stateroom	16
Master Stateroom	16
Master Bath	17
Master Bath	17
Guest Stateroom	17
Guest Stateroom	17
Guest Bath	17
Guest Stateroom	17
Guest Stateroom	18
Guest Stateroom	18
Guest Bath	18
Guest Stateroom	18
Guest Bath	18
Twin Stateroom	18
Twin Stateroom	19
Twin Guest Bath	19
Guest Stateroom	19

Companionway	19
Skylounge	19
Skylounge	19
Pilothouse	20
Pilothouse	20
Galley	20
Galley	20
Galley Dining Area	20
Galley	20
Upper Deck	21
Upper Deck Bar and Jacuzzi	21
Upper Deck Bar and Jacuzzi	21
Upper Deck	21
Jacuzzi	21
Side Deck	21
Aft Deck	22
Aft Deck	22
Stairway to Aft Deck	22
Engine Room Hallway	22
Engine Room	22
Engine Room	22
Engine Room	23
Crew Quarters	23
Vessel Tank Arrangement INVISION	23
General Arrangement	23
<b>CONTACTS</b>	<b>24</b>
Contact details	24
Telephones	24
Office hours	24

---

Address

24

---

---

# SPECIFICATIONS

---

## Overview

---

INVISION completed an extensive refit in 2019 including updates to the interior, exterior, and mechanical services/updates. New audio/visual equipment, Marshall Islands commercial class inspection, and air conditioning systems were the start of the project. The full-beam (28') on-deck master stateroom features a king-size bed with his/her ensuite, shower, and an oversized tub. All four guest suites (three queen and one twin) are equally well-appointed. The main salon is bright and airy with 7' headroom and an abundance of natural light. The formal dining area seats ten guests and the port side marble bar is the perfect setting for afternoon cocktails. Large glass doors aft open to an alfresco dining area on the aft deck. The skylounge above is an inviting social area for entertaining and opens aft to the bridge deck with covered seating. The expansive sundeck includes a Jacuzzi, dining area, and large sunpads. Zero Speed/at rest stabilizers give the feeling of tranquility in all conditions. All offers encouraged!!

INVISION was originally built as NORWEGIAN QUEEN at the Trident Shipyard in Tampa, Florida and became NORTHERN LIGHTS under her second ownership. At 422 gross tons she boasts enormous volume. She has been well maintained by her current owners and is in excellent condition.

## Basic Information

---

**Category:** Motor Yacht

**Model Year:** 2001

**Year Built:** 2001

**Refit Year:** 2019

**Country:** United States

**Fly Bridge:** Yes

## Dimensions

---

**LOA:** 132' 0" (40.23m)

**Beam:** 28' 0" (8.53m)

**Max Draft:** 7' 5" (2.26m)

---

## Speed, Capacities and Weight

---

**Cruise Speed:** 14 Kts. (16 MPH)

**Cruise Speed Range:** 1300

**Max Speed:** 17 Kts. (20 MPH)

**Gross Tonnage:** 422 Pounds

**Water Capacity:** 2497 Gallons

**Fuel Capacity:** 7200 Gallons

---

## Accommodations

---

**Total Cabins:** 5

**Sleeps:** 10

**Captain Cabin:** True

**Crew Cabin:** 5

**Crew Sleeps:** 8

---

## Hull and Deck Information

---

**Hull Material:** Composite

**Hull Configuration:** Semi-Displacement

**Hull Designer:** Trident Marine

**Exterior Designer:** Carr Design

**Interior Designer:** Yacht Design Associates

---

## Engine Information

---

**Engines:** 2

**Manufacturer:** MTU

**Model:** 12V396

**Engine Type:** Inboard

**Fuel Type:** Diesel

---

# DETAILED INFORMATION

---

## Overview

---

INVISION has a modern interior with recent updates to artwork, exterior cushions, soft goods and updated AV equipment throughout. The full-beam on-deck master suite features a king-size bed facing aft with his/her ensuite with shower and separate oversized tub. All four ensuite guest staterooms below are equally well-appointed. The main salon has broad windows allowing an abundance of light and is quietly divided by an entertainment center from the open dining area which accommodates up to ten guests at an expansive glass table. The inside marble bar is the perfect setting for afternoon cocktails with large doors opening aft to an alfresco dining area. The skylounge above is an inviting social area for entertaining. Exiting aft of the skylounge opens to the bridge deck with covered seating. The expansive sundeck includes a Jacuzzi, dining area and large sunpads.

## Main Salon

---

Large windows accent the spacious full beam main salon. At night, soft lighting is created by domed and recessed lighting. Formal dining is provided for ten guests in the main dining area. The salon's full-service sit-down bar, which grants sprawling ocean views through large windows, is perfect for an after-dinner nightcap. A spiral staircase at the forward end of the salon complements the modern design style and craftsmanship of the salon's furnishings.

## Accommodations

---

Accommodation for ten guests in five staterooms consisting of a full-beam master suite on the main deck with three queen staterooms and one twin stateroom below deck. All guest rooms have recently upgraded the entertainment systems in each room with satellite TV, on-demand Kaleidescape central movie system and audio server. All staterooms include ensuite facilities.

## Master Stateroom

---

Designed to achieve the pinnacle of comfort and luxury, this full-beam master suite surpasses its lofty goal. An adjoining spa provides relaxation. Spacious his and her baths bestow the convenience and indulgence expected on a yacht of this caliber. Twin closets provide generous storage for wardrobe and travel items. Relaxing in the master stateroom is made simple with its plush couch and full-featured entertainment center and flat-screen television.

## Guest Staterooms

---



The fully appointed ensuite staterooms include a cutting-edge entertainment center and plenty of closet space.

---

## Galley / Dinette

---

Professionally styled galley with stainless steel finishes and granite countertops. Top features include a 5-burner professional cook-top, double oven, oversized-side by side refrigerator/freezer, large double sink, a dedicated wine cooler, great working counter areas and a lot of cabinet storage space. In addition, there is a full-service counter with sink and storage areas adjacent to the dining room doorway to stage for proper dining service. The raised breakfast nook is wonderful for informal dining with a great view of the chef's working area.

---

## Skylounge

---

Comfort makes the skylounge a popular piece of real estate on this ship. The sit-down bar provides a convenient meeting spot while the ultra-comfortable couch and harmonizing chairs provide a plush alternative. A skylight ceiling adds to the ambiance while a hidden flat-screen television can be made to instantly appear and entertain.

---

## Aft / Flybridge

---

There is a full complement of amenities found on the aft deck and flybridge. Al fresco dining on the open breeze for up to ten guests is always popular on the aft deck. During the day its sit-down bar will be the most visited spot for thirsty sunbathers. Dual stairs conveniently lead down to the cockpit where water activities rule the day. The flybridge provides maximum entertainment with its six-person Jacuzzi, full bar and sunbathing accommodations. The unparalleled ocean views from the flybridge make this deck a destination for sightseers.

---

## Pilothouse

---

Designed for maximum cruising safety and comfort in all weather conditions, this pilothouse is envied by all sea captains. Communication and navigation are conducted using the latest equipment technology that functions in all worldwide locales. A raised observation settee is integrated on the rear of the pilothouse to provide comfort to guests and functions as impromptu office space.

---

## Communication and Navigation Equipment

---

### Communication Systems

- V-Sat
- Mini-M satellite communications system
- VOIP x 4 Lines
- SatCom cellular phone
- Sea 235 HF/SSB digital radiotelephone
- 2 x VHF ICOM IC-M604
- Furuno NHF radio telephone FM-8500
- Cellular phone system connected to the PBX system

## Navigation Systems

- 1 x Furuno X-Band radar FR-2125 with ARPA
- 1 x Furuno S-Band radar FR-2135S with ARPA
- Anchutz Gyro compass with STD-20
- Delta magnetic compass with Sonde to backup gyro
- 1 x Anchutz autopilot system to include Pilotstar D, NautoAlarm panel, watch alarm, rudder angle
- Indicator, gyro repeater, dimmer, auto-manual switch, override switch, NFU tiller
- 1 x Furuno FCV-582L color sounder with 50 kc transducer (engine room keel) and a 200 kc transducer (at transom)
- 1 x Raytheon ST-80 Materview sounder (forward keel, port chine, starboard chine)
- 2 x Northstar 941X GPS
- Weather Channel marine satellite weather system
- HP printer – All-in-One HP printer/scan/fax/copier
- 3 x Raytheon Masterview display – (windspeed/direction/etc.)
- Furuno Navtex Receiver NX-500
- Furuno AIS FA 150

## Entertainment Systems

- Orbit digital satellite TV system with 16 SAT receivers for all TV's and music system
- Music system with keypad controls in galley, salon, aft deck boat deck, sun deck and sky lounge
- This system has inputs from a Sony 5 CD changer, Yamaha AM/FM stereo turner, and satellite receiver

## Skylounge

- AMX Central Controller
- Surround Sound system to include 42" NEC plasma TV, Yamaha stereo turner, Sony DVD and Mitsubishi VCR

## Salon

- AMX Central Controller
- Surround Sound system to include 42" NEC plasma TV, Yamaha stereo tuner, Sony DVD and VCR

## Master Stateroom

- AMX Central Controller
- Surround Sound system to include 42" NEC plasma TV, Yamaha stereo tuner, Sony DVD and VCR, iPod docking station

## Guest staterooms

- Flat-screen TV with DVD, Sony stereo AM/FM/CD player with 50 CD storage, iPod docking station

## Galley

- Sony Trinitron 20" or 13" TVs with DVD and AM/FM/CD player

## Crew Cabins

- All 5 cabins have new flat-screen TVs with DVD and AM/FM/CD players

## Crew Lounge

- Sony Trinitron 20" TV with VCR & DVD, 20" LCD TV with a Mitsubishi VCR & DVD
- Sony AM/FM/CD stereo player

---

## Main Machinery

- Main Engines: (2) MTU 12V396, 2250hp
- Engine Hours: Port 3,749; Starboard 3,749 (May 2021)
- Engine hours to date since W6 full zero time engine rebuild in 2013

- 1200 rpm range 1482 miles @ 10.5 knots burning approx. 55.2 gals per hour
- 1400 rpm range 1152 miles @ 12 knots burning approx. 81.2 gals per hour
- 1600 rpm range 886 miles @ 14 knots burning approx. 123 gals per hour
- 1800 rpm range 727 miles @ 16 knots burning approx. 172 gals per hour
- 2 x Filtration Concepts Watermakers – 4,000 U.S. gallons per day
- ABT-TRAC Zero speed/at rest stabilization
- American Bowthruster Unit (150hp)

---

## Electrical Systems

---

- 120V/208V/3- phase/60 Hz
- Generators: 2 x 80 kw Northern Lights generators
- Generator Hours: Port 2,672 on rebuilds, 6,586 total (May 2021)
- Generator Hours: Stbd 2,674 on rebuilds, 6,674 total (May 2021)
- Atlas 75 kva shore power
- 1 x ACR RCL-600A searchlight
- 2 x ACR RCL-100 searchlights

---

## Safety, Security and Fire Fighting Equipment

---

- ISIS Ships Monitoring System
- CCV System Panasonic
- 11 x Cameras with automatic deck sensors
- (5) 21" Hatteland Monitors – All inputs can be switched to any monitor with touch screen
- Fire pump/2 fire stations
- Auto CO2 in machine space
- Mimick Panel that indicates running lights, high water, fire/smoke, and a ship's alarm and security read outs
- Mini ISM Compliant

---

## Tenders and Toys

---

- 2 x 2019 SeaBobs model F5SR
- 20' Nautica w/ 150hp
- 2 x RXT SeaDoo wave runners (2019)
- 3-Person inflatable couch
- 2 x Inflatable paddleboards
- Wakeboard
- 1 x Conquest inflatable kayak
- 5-Man jumbo dog inflatable toy
- 1 x Pair of Body Glove water skis

- Light fishing gear
- 2 x Yamaha water scooters
- Snorkeling gear
- Bauer Dive Compressor

## Upgrades

---

2019

- Steering rams rebuilt
- Anschutz gyro autopilot service
- 49" Samsung 4k TV in master stateroom
- 32" Samsung HD TV in guest staterooms
- New iPad controls in salon, skylounge and master stateroom
- Upgrades to outdoor cushions, umbrellas, Nautica tender cushions, new linens and comforters in guest staterooms

2018

- Skylounge soft goods, furniture and carpeting replaced
- All new exterior cushions
- New Sonos system
- New satellite TV domes
- New SeaTel VSAT
- FSI 300 GPH watermaker
- 3 x New Dometic 5-ton chillers
- 5 x New Hatteland monitors in pilothouse

Previous Upgrades

- Both main engines (zero time W-6) rebuilt by FDDA in Fort Lauderdale, FL at a cost of \$760k (2013)
- New exterior paint (2013)
- New ABT Trac zero speed/at rest stabilizers (2009)

## Exclusions

---

The 42' MTI tender is excluded from the sale of INVISION.

## Exclusions

---

Owner's personal belongings.

## Disclaimer

---

The Company offers the details of this vessel or yacht in good faith but cannot guarantee or warrant the accuracy of this information nor warrant the condition of the vessel. A buyer should instruct his representatives, agents, or his surveyors, to investigate such details as the buyer desires validated. This vessel or yacht is offered subject to prior sale, price change, or withdrawal without notice.

# PHOTOS

**Main Salon**



**Main Salon**



**Main Salon**



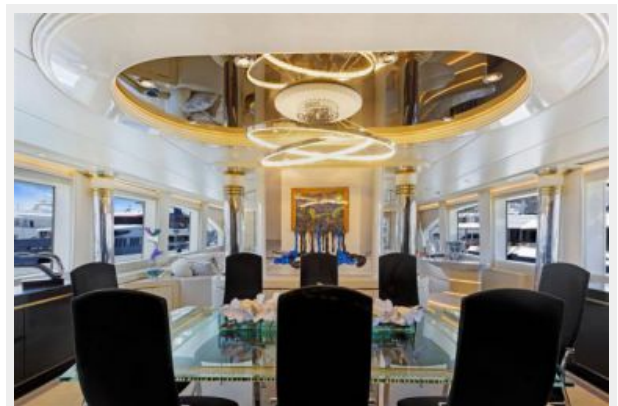
**Main Salon into Dining Area**



**Dining Area**

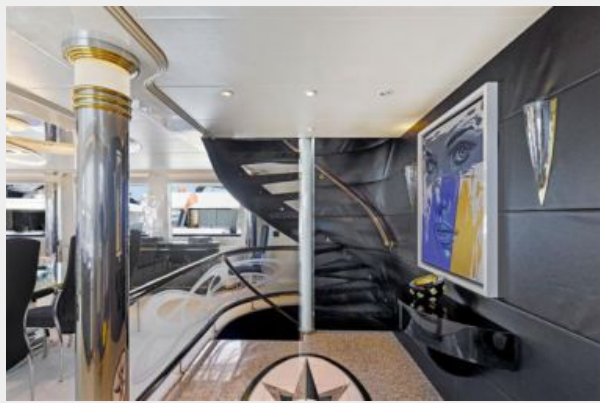


**Dining Area**





**Salon Stairway**



**Master Stateroom**



**Master Stateroom**



**Master Stateroom**



**Master Stateroom**

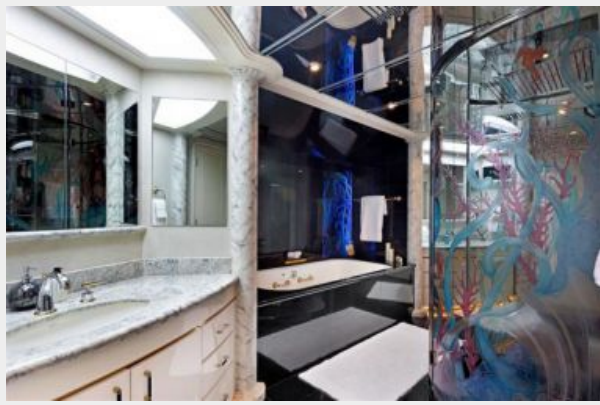


**Master Stateroom**





**Master Bath**



**Master Bath**



**Guest Stateroom**



**Guest Stateroom**



**Guest Bath**



**Guest Stateroom**



**Guest Stateroom**



**Guest Stateroom**



**Guest Bath**



**Guest Stateroom**



**Guest Bath**



**Twin Stateroom**





**Twin Stateroom**



**Twin Guest Bath**



**Guest Stateroom**



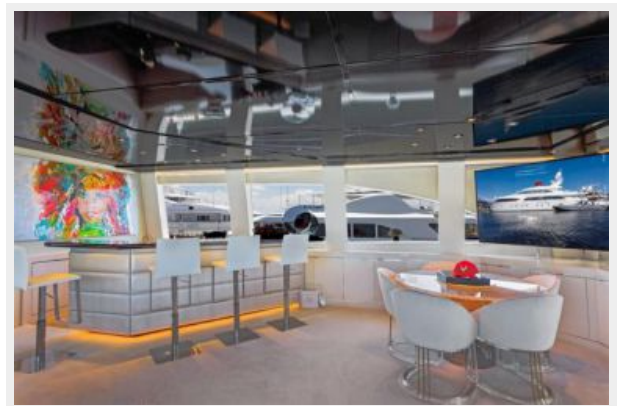
**Companionway**



**Skylounge**



**Skylounge**



**Pilothouse**



**Pilothouse**



**Galley**



**Galley**



**Galley Dining Area**



**Galley**





**Upper Deck**



**Upper Deck Bar and Jacuzzi**



**Upper Deck Bar and Jacuzzi**



**Upper Deck**



**Jacuzzi**



**Side Deck**



**Aft Deck**



**Aft Deck**



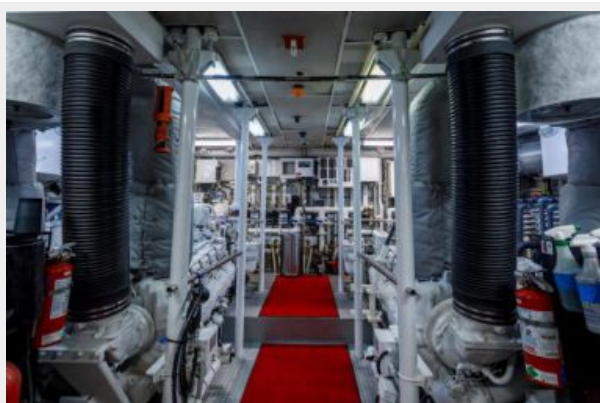
**Stairway to Aft Deck**



**Engine Room Hallway**



**Engine Room**



**Engine Room**





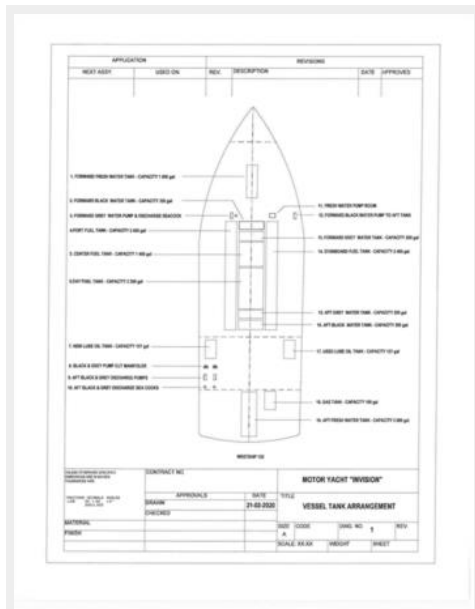
### Engine Room



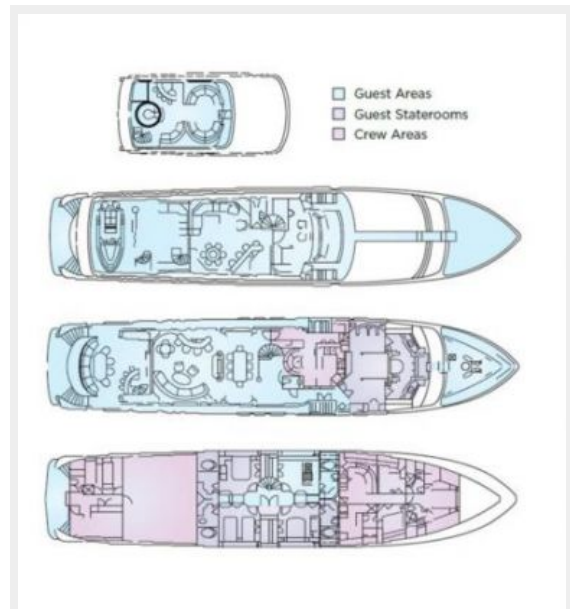
### Crew Quarters



### Vessel Tank Arrangement INVISION



### General Arrangement



# CONTACTS

---

Andrey Shestakov, leading yacht broker of the sales department of Shestakov Yacht Sales Inc. Shestakov Yacht Sales Inc., the official representative of the Miami/Fort Lauderdale FL headquarters.

## Contact details

---

Email: [andrey@shestakovyachtsales.com](mailto:andrey@shestakovyachtsales.com)

Web: [shestakovyachtsales.com/en/](http://shestakovyachtsales.com/en/)

## Telephones

---

USA: +1(954)274-4435

## Office hours

---

Monday – Saturday: **9:00 - 21:00** EDT

Sunday: **closed**

## Address

---



Harbour Towne Marina, 850 NE 3rd St,  
STE 213, Dania, FL 33004