

SANITY — VITECH



Builder: VITECH

Year Built: 1994

Model: Motor Yacht

Price: PRICE ON APPLICATION

Location: United States

LOA: 72' 0" (21.95m)

Beam: 18' 11" (5.77m)

Max Draft: 5' 7" (1.70m)

Cruise Speed: 18 Kts. (21 MPH)

Max Speed: 28 Kts. (32 MPH)

Our experienced yacht broker, Andrey Shestakov, will help you choose and buy a yacht that best suits your needs **Sanity — VITECH** from our catalogue. Presently, at Shestakov Yacht Sales Inc., we have a wide variety of yachts available on our sale's list. We also work in close contact with all the big yacht manufacturers from all over the world.

If you would like to buy a yacht **Sanity — VITECH** or would like help answering any questions concerning purchasing, selling or chartering a yacht, please call **+1(954)274-4435**

TABLE OF CONTENTS

TABLE OF CONTENTS	2
SPECIFICATIONS	5
Overview	5
Basic Information	5
Dimensions	5
Speed, Capacities and Weight	6
Accommodations	6
Hull and Deck Information	6
Engine Information	6
DETAILED INFORMATION	7
Numerous Upgrades	7
Exterior Features and Equipment	7
Hull	8
Deck Equipment	8
Electronics and Navigation Equipment	9
Accommodations	9
Electricity	10
Generators	10
Disclaimer	10
Exclusions	10
Disclaimer	10
PHOTOS	12
2_IMG_3145	12
3_IMG_3146	12
4_IMG_3149 (1)	12
5_IMG_3150	12
6_IMG_3152	12
7_IMG_3111	12

8_IMG_3112	13
9_IMG_3113	13
11_IMG_1407	13
10_IMG_3136	13
12_IMG_1406	14
13_IMG_1408	14
14_IMG_1409	14
15_IMG_1410	14
16_IMG_1411	15
17_IMG_2976	15
18_IMG_2974	15
19_IMG_2975	15
20_IMG_2986	16
21_IMG_2978	16
23_IMG_2990	16
22_IMG_2972	16
24_IMG_2992	17
25_IMG_2980	17
27_IMG_2981	17
26_IMG_3109	17
28_IMG_2985	18
29_IMG_2970	18
31_IMG_2977	18
30_IMG_2971	18
32_IMG_2964	19
33_IMG_2968	19
34_IMG_2955	19
35_IMG_2956	19
36_IMG_2954	20

37_IMG_2958	20
38_IMG_2959	20
39_IMG_2962	20
40_IMG_2960	21
41_IMG_2965	21
42_IMG_2966	21
43_IMG_2967	21
44_IMG_2963	22
CONTACTS	23
Contact details	23
Telephones	23
Office hours	23
Address	23

SPECIFICATIONS

Overview

PRICED TO SELL QUICKLY

This stunning 72' Vitech Motor Yacht is fully equipped with many upgrades and has been well maintained by an experience yachtsman. "Sanity" is powered by twin Detroit 12V92 engines at 1080HP each and her semi-displacement V-Hull cruises at a comfortable 18 knots. Her spacious flybridge, large cockpit area and well-appointed salon allow her guests many options where they can enjoy fun filled days and relaxing evenings. There's room for fishing, entertaining or al fresco dining.

Four staterooms and four heads provide accommodations for up to eight. Sanity's newer open galley design gives her a wonderful modern feel and features a new Bosch full size refrigerator and new LG stove. The Aft Cockpit has teak flooring and a teak table for up to 6. The flybridge features a large dining area with seating for up to 16. The spacious sunpad on the bow provides an excellent area for tanning and socializing. Sanity is equipped with Newer Furano Electronics and two Kohler Generators (32KW & 8KW). Her low houred engines are serviced on a regular basis by a dedicated yacht manager and all systems are in good working condition.

This is a great opportunity to own a well maintained yacht with the equipment and accommodations to serve as a weeklong getaway, live aboard or an extended cruiser.

SELLER WILL DELIVER TO FLORIDA

ALL OFFERS ENCOURAGED - DON'T MISS THIS INCREDIBLE OPPORTUNITY

Basic Information

Category: Motor Yacht

Model Year: 1994

Year Built: 1994

Country: United States

Dimensions

LOA: 72' 0" (21.95m)

Beam: 18' 11" (5.77m)

Max Draft: 5' 7" (1.70m)

Speed, Capacities and Weight

Cruise Speed: 18 Kts. (21 MPH)

Max Speed: 28 Kts. (32 MPH)

Displacement: 120000 Pounds

Water Capacity: 300 Gallons

Holding Tank: 60 Gallons

Fuel Capacity: 1400 Gallons

Accommodations

Total Cabins: 4

Total Heads: 4

Hull and Deck Information

Hull Material: Fiberglass

Engine Information

Engines: 2

Manufacturer: Detroit Diesel

Model: 12V92

Engine Type: Inboard

Fuel Type: Diesel

DETAILED INFORMATION

Numerous Upgrades

- Highly Updated Galley
- New Granite Counters
- New Stainless Double Door Full size fridge
- New Stainless LG Double Oven
- Full Recent Service Oct 2019 (80K)
- New Bottom Paint
- New Rudders & Seals
- All new hoses
- Heat Exchanger Service
- Generator Service
- New Thru Hulls
- New 15" Furano Electronics
- New Simrad Autopilot
- New Bow Thruster
- New Trim Tabs
- SS Anchor
- New Flatscreen TV's
- New Wood Flooring
- New Bimini Top
- All New in 2019 Electric Bilge Pumps
- Rebuilt Vacuum Head System
- New Insta heat Hot water
- New smart Battery chargers for 24V and 110V
- All 24V and 12V batteries replaced in 2019

Exterior Features and Equipment

Aft Cockpit

- Seating for 4-6 people
- Large open deck space
- Teak Deck
- Access to swim platform and washdown
- Access to upper cockpit

Upper Cockpit

- Large bench type sofa seating for 8 -10 people
- Captain and navigators seats

- Teak table and seats accommodation for – 16 people
- wash basin and stowage under
- Crane for launching support
- Light open and cold place with a commanding view.
- 360 degree view

Fore-Deck

- Sun bed
- Seating for 8 – 10 people
- Windlass
- Deck hatches to forward crew quarters or storage area

Other

- Engine displays
- Switch panel
- Safety Equipment
- Fire Extinguisher
- Life Jackets
- Flares
- Offshore First Aid Kit

Last Haul Out: October 2019

Bottom Paint: New October 2019

Hull

- Fiberglass Composite Semi-Displacement "V" Hull
- White Color Hull w/ Black Waterline and Bottom Paint
- Hull Form, Chined

Deck Equipment

- Cockpit Table
- Teak Cockpit
- Swimming Ladder
- Cockpit Cushions
- Cockpit Shower
- Electric Davit

Electronics and Navigation Equipment

- Newer Furuno Dual Screen at Both Helms
- 2019 Charts for Caribbean Waters
- VHF
- Radar
- GPS
- Compass
- Simrad Autopilot

Accommodations

Saloon

- Huge U shaped sofa with second 3 seat sofa all new
- Large windows providing lots of natural beam
- Rear access to master compartment
- Forward VIP and starboard and mid ship pair compartments
- Dedicated air conditioning

Master Cabin

- King dimensions bed with integrated bedside desks, one with locker box.
- Air conditioning
- Two reading lamps
- Ample hanging lockers
- Private Access
- Private Head and full shower

VIP Cabin

- King dimensions bed with integrated bedside desks, one with locker box.
- Air conditioning
- Two reading lamps
- Ample hanging lockers
- Access to private fronts
- Two opening portholes
- Private head and full shower

Starboard Visitor Compartment

- Two large single cots
- Air conditioning
- Storage cupboards and hanging lockers
- Head and full shower

Midship Pair Compartment

- Two single cot in bunk layout
- Storage hanging locker
- Reading illumination
- Private Head, share shower with Starboard cabin

Galley

- New Bosch Full dimensions refrigerator and freezer
- Microwave
- New LG Full dimensions oven and 4 induction stove top
- Large Single sink
- New Island style galley

Electricity

- All output sockets and appliances 110V
- Twin Generators
- Shore power inlet
- Air-conditioning – 6 units

Generators

- Kohler 32kW - 3700 hours
- Kohler 8 kW - 1700 hours

Disclaimer

The company offers the details of this vessel in good faith but cannot guarantee or warrant the accuracy of this information nor warrant the condition of the vessel. A buyer should instruct his agents, or his surveyors, to investigate such details as the buyer desires validated. This vessel is offered subject to prior sale, price change or withdrawal without notice.

Exclusions

Owner's personal belongings.

Disclaimer

The Company offers the details of this vessel or yacht in good faith but cannot guarantee or

warrant the accuracy of this information nor warrant the condition of the vessel. A buyer should instruct his representatives, agents, or his surveyors, to investigate such details as the buyer desires validated. This vessel or yacht is offered subject to prior sale, price change, or withdrawal without notice.

PHOTOS

2_IMG_3145



3_IMG_3146



4_IMG_3149 (1)



5_IMG_3150



6_IMG_3152



7_IMG_3111



8_IMG_3112



9_IMG_3113



11_IMG_1407



10_IMG_3136



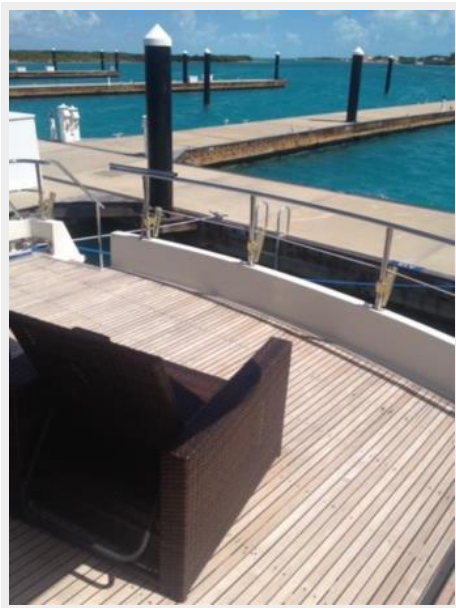
12_IMG_1406



13_IMG_1408



14_IMG_1409



15_IMG_1410



16_IMG_1411



17_IMG_2976



18_IMG_2974



19_IMG_2975



20_IMG_2986



21_IMG_2978



23_IMG_2990



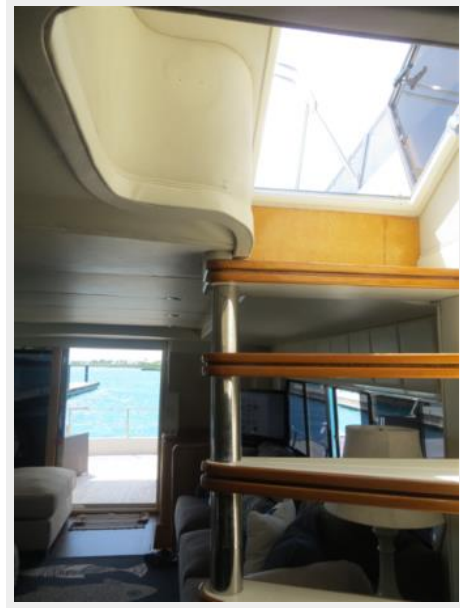
22_IMG_2972



24_IMG_2992



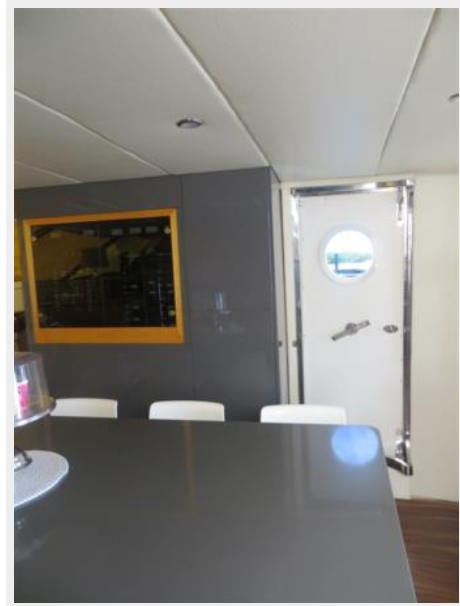
25_IMG_2980



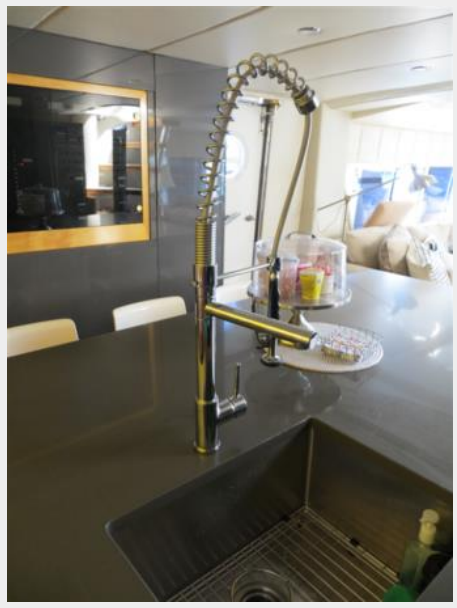
26_IMG_3109



27_IMG_2981



28_IMG_2985



29_IMG_2970



31_IMG_2977



30_IMG_2971



32_IMG_2964



33_IMG_2968



34_IMG_2955



35_IMG_2956



36_IMG_2954



37_IMG_2958



38_IMG_2959



39_IMG_2962



40_IMG_2960



41_IMG_2965



42_IMG_2966



43_IMG_2967



44_IMG_2963



CONTACTS

Andrey Shestakov, leading yacht broker of the sales department of Shestakov Yacht Sales Inc. Shestakov Yacht Sales Inc., the official representative of the Miami/Fort Lauderdale FL headquarters.

Contact details

Email: andrey@shestakovyachtsales.com

Web: shestakovyachtsales.com/en/

Telephones

USA: +1(954)274-4435

Office hours

Monday – Saturday: **9:00 - 21:00** EDT

Sunday: **closed**

Address



Harbour Towne Marina, 850 NE 3rd St,
STE 213, Dania, FL 33004