

LA ROSA — BILGIN YACHTS



Builder: BILGIN YACHTS

Year Built: 2010

Model: Motor Yacht

Price: PRICE ON APPLICATION

Location: Spain

LOA: 110' 6" (33.68m)

Beam: 22' 11" (6.98m)

Cruise Speed: 12 Kts. (14 MPH)

Max Speed: 19 Kts. (22 MPH)

Our experienced yacht broker, Andrey Shestakov, will help you choose and buy a yacht that best suits your needs **LA ROSA — BILGIN YACHTS** from our catalogue. Presently, at Shestakov Yacht Sales Inc., we have a wide variety of yachts available on our sale's list. We also work in close contact with all the big yacht manufacturers from all over the world.

If you would like to buy a yacht **LA ROSA — BILGIN YACHTS** or would like help answering any questions concerning purchasing, selling or chartering a yacht, please call **+1(954)274-4435**

TABLE OF CONTENTS

TABLE OF CONTENTS	2
SPECIFICATIONS	4
Overview	4
Basic Information	4
Dimensions	4
Speed, Capacities and Weight	4
Accommodations	5
Hull and Deck Information	5
Engine Information	5
PHOTOS	6
1	6
4	6
2	6
5	6
6	6
8	7
7	7
21	7
9	7
20	7
22	7
11	8
10	8
16	8
12	8
13	8
19	8
17	9

15	9
image2	9
PHOTO-2020-01-27-10-46-41	9
14	9
18	9
23	10
CONTACTS	11
Contact details	11
Telephones	11
Office hours	11
Address	11

SPECIFICATIONS

Overview

Bilgin Yachts in 2010, MADNESS is a RINA classed and commercially registered motor yacht.

She has been meticulously maintained by the same crew since her build and is seriously for sale

RINA classed, a quality charter yacht

Turnkey condition

Low engine hours

In addition, she accommodates 10 guests in a Master Suite, two VIP and two twin Cabins, and has a large flybridge with a Sunroof, Spa Pool, bar, fridge, Dining Table and Sun Loungers.

Basic Information

Category: Motor Yacht

Sub Category: Flybridge

Model Year: 2010

Year Built: 2010

Country: Spain

Fly Bridge: Yes

Dimensions

LOA: 110' 6" (33.68m)

Beam: 22' 11" (6.98m)

Speed, Capacities and Weight

Cruise Speed: 12 Kts. (14 MPH)

Max Speed: 19 Kts. (22 MPH)

Gross Tonnage: 163 Pounds

Water Capacity: 634.0129248 Gallons

Fuel Capacity: 3566.322702 Gallons

Fuel Consumption: 58.11785144 Gallons

Accommodations

Total Cabins: 5

Sleeps: 10

Crew Sleeps: 4

Hull and Deck Information

Hull Material: Wood Epoxy

Hull Configuration: Monohull

Engine Information

Engines: 2

Manufacturer: MTU

Engine Type: Inboard

Fuel Type: Diesel

PHOTOS

1



2



4



5



6



7



8



9



21



22



20



10



11



12



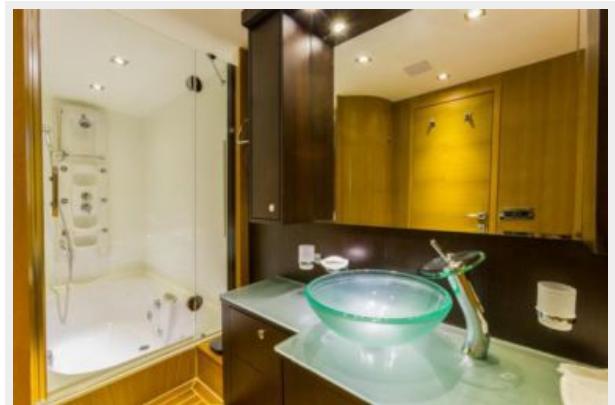
16



13



19



15

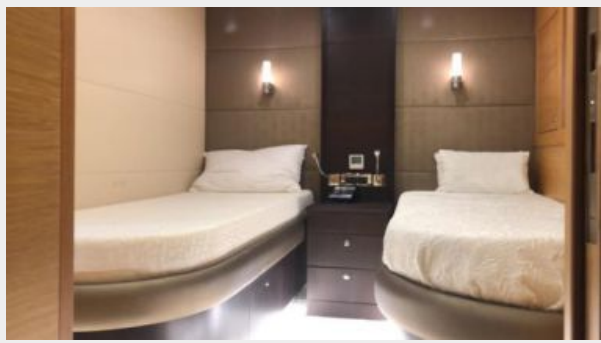


17



image2

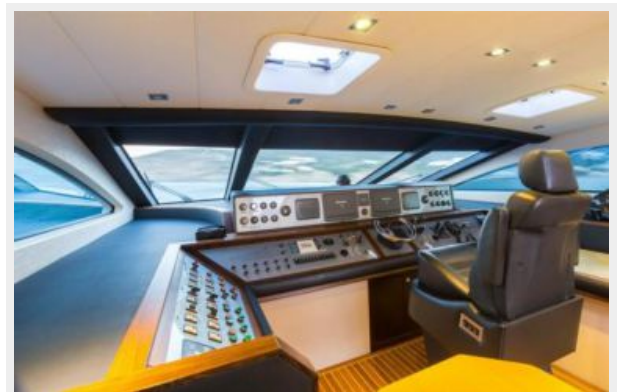
PHOTO-2020-01-27-10-46-41



14



18



23



CONTACTS

Andrey Shestakov, leading yacht broker of the sales department of Shestakov Yacht Sales Inc. Shestakov Yacht Sales Inc., the official representative of the Miami/Fort Lauderdale FL headquarters.

Contact details

Email: andrey@shestakovyachtsales.com

Web: shestakovyachtsales.com/en/

Telephones

USA: +1(954)274-4435

Office hours

Monday – Saturday: **9:00 - 21:00** EDT

Sunday: **closed**

Address



Harbour Towne Marina, 850 NE 3rd St,
STE 213, Dania, FL 33004