

BLUE MOON — ENDEAVOUR



Builder: ENDEAVOUR

Year Built: 1985

Price: PRICE ON APPLICATION

Location: United States

LOA: 43' 3" (13.18m)

Beam: 13' 0" (3.96m)

Max Draft: 5' 0" (1.52m)

Our experienced yacht broker, Andrey Shestakov, will help you choose and buy a yacht that best suits your needs **Blue Moon — ENDEAVOUR** from our catalogue. Presently, at Shestakov Yacht Sales Inc., we have a wide variety of yachts available on our sale's list. We also work in close contact with all the big yacht manufacturers from all over the world.

If you would like to buy a yacht **Blue Moon — ENDEAVOUR** or would like help answering any questions concerning purchasing, selling or chartering a yacht, please call **+1(954)274-4435**

TABLE OF CONTENTS

TABLE OF CONTENTS	2
SPECIFICATIONS	3
Overview	3
Basic Information	3
Dimensions	3
Speed, Capacities and Weight	3
Accommodations	4
Hull and Deck Information	4
Engine Information	4
DETAILED INFORMATION	5
Exclusions	6
Disclaimer	6
PHOTOS	8
CONTACTS	18
Contact details	18
Telephones	18
Office hours	18
Address	18

SPECIFICATIONS

Overview

Blue Moon a blue water 42' Center Cockpit cruising sailboat has just undergone a major refit & repower by its owner from the bottom, hull, topsides, interior and rigging with numerous upgrades. A new Cummins B-4 FWC diesel motor with Hurth transmission, all new exhaust system and hoses with only 50 hours, including a new shaft, cutlass bearing, bronze shaft log coupler and a rebalanced 3 bladed bronze prop. A new fuel tank and fuel lines as well as a new water tank and a 6 gallon Seaward hot water tank plumbed to the engine. The galley has a new Isotherm 2010-SX 2.5 amp 12/120 volt refrigeration system and a separate 1.1 cubic freezer. This well maintained 42 Endeavour has all new salon cushions, along with V bunk cushions. New flooring throughout the entire cabin area. Blue Moon is ready for her next new owner.

Basic Information

Model Year: 1985

Year Built: 1985

Country: United States

Dimensions

LOA: 43' 3" (13.18m)

Beam: 13' 0" (3.96m)

Max Draft: 5' 0" (1.52m)

MFG Length: 42' 0" (12.80m)

Speed, Capacities and Weight

Displacement: 25000 Pounds

Water Capacity: 70 Gallons

Holding Tank: 25 Gallons

Fuel Capacity: 50 Gallons

Accommodations

Total Cabins: 2

Total Berths: 3

Total Heads: 2

Hull and Deck Information

Hull Material: Fiberglass

Engine Information

Engines: 1

Manufacturer: Cummins

Model: B-4

Engine Type: Inboard

Fuel Type: Diesel

DETAILED INFORMATION

Deck & Hull

- **Edson Pedestal Steering Quadrant w/ SS Lewmar folding steering wheel**
- **Ritchie Compass**
- **Electronics mounted along with Faria gauges**
- **Bimini Top and Dodger**
- **Top Gun Marine Canvas 3pc Heavy Weather Cover**
- **Lewmar windlass with anchor**
- **New Stainless Steel Chain Plates**
- **12 new port lights**
- **5 new Lexan hatch cover lenses**
- **New mast boot cover**
- **Painted hull**
- **Bottom striped prepped barrier coated with new bottom paint**
- **Stern boarding / swim ladder**
- **Stainless Steel Davit**
- **Life lines**
- **Norcold 4408 Series Icebox**

Rigging & Sails

- **Battened Main Sail**
- **Furling Jib Sail**
- **Schaefer Traveler and Blocks**
- **Lewmar deck and halyard winches**
- **All new 5/8" halyard lines**

Electronics

- **ONWA - GPS Chart Plotter w/ AIS**
- **Data Marine Digital Depth**
- **Data Marine Speed Log Distance meter**
- **Data Marine Apparent Wind meter**
- **Raytheon Radar**
- **Uniden VHF Marine Radios (2)**
- **Jensen Marine Stereo**

Electrical

- Heart Interface 2000 watt system
- 2 Gel Batteries
- 2 D-8 Batteries
- 12 volt DC circuit panel
- Solar Panel on stern rail

Accommodations

The main salon is entered from the center cockpit companion way into a spacious interior with all new flooring throughout. The Navigation station is to starboard that includes the electrical panel for all systems on board. The main salon has matching settee opposite each other with storage. A drop leaf table provides seating for the family and guests.

The forward head is situated to port forward of the main salon and can be entered either from the salon or forward cabin. All new faucets and head with a separate shower. The forward cabin has a spacious V berth with new mattresses and covers. Plenty of storage with hanging lockers port and starboard.

The galley is to port and is along side and runs fore & aft from the main salon to the aft master cabin. The double stainless steel sinks have new faucets and refrigerator compartments are outboard aft of the stove.

The master cabin has a centerline double berth with storage and hanging lockers on both sides. The head and shower are to starboard with a separate compartment for the shower with all new faucets and head.

Disclaimer The Company offers the details of this vessel in good faith but cannot guarantee or warrant the accuracy of this information nor warrant the condition of the vessel. A buyer should instruct his agents, or his surveyors, to investigate such details as the buyer desires validated. This vessel is offered subject to prior sale, price change, or withdrawal without notice.

Exclusions

Owner's personal belongings.

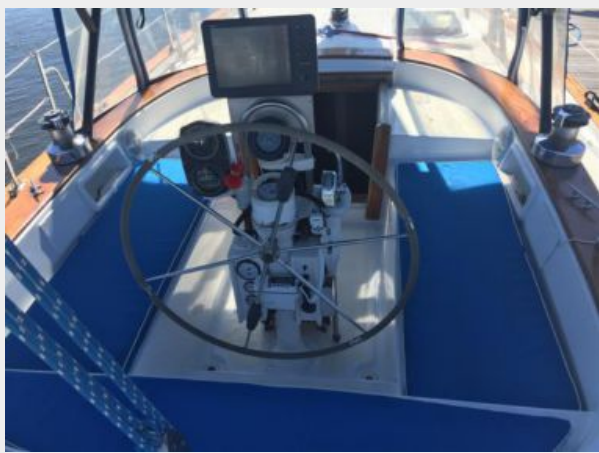
Disclaimer

The Company offers the details of this vessel or yacht in good faith but cannot guarantee or warrant the accuracy of this information nor warrant the condition of the vessel. A buyer should

instruct his representatives, agents, or his surveyors, to investigate such details as the buyer desires validated. This vessel or yacht is offered subject to prior sale, price change, or withdrawal without notice.

PHOTOS





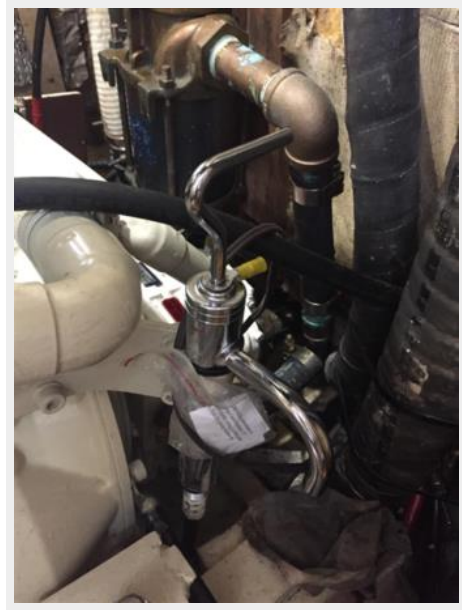


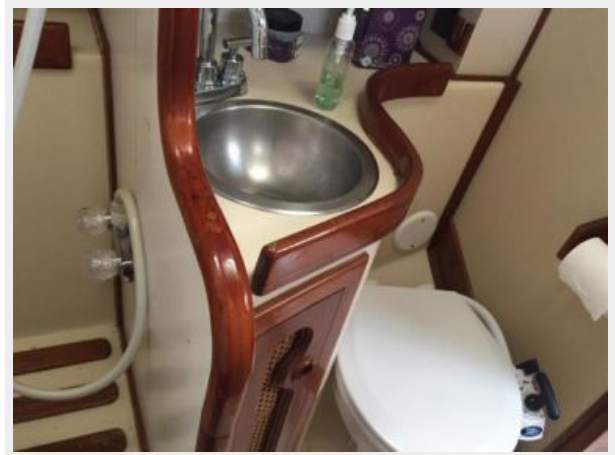














CONTACTS

Andrey Shestakov, leading yacht broker of the sales department of Shestakov Yacht Sales Inc. Shestakov Yacht Sales Inc., the official representative of the Miami/Fort Lauderdale FL headquarters.

Contact details

Email: andrey@shestakovyachtsales.com

Web: shestakovyachtsales.com/en/

Telephones

USA: +1(954)274-4435

Office hours

Monday – Saturday: **9:00 - 21:00** EDT

Sunday: **closed**

Address



Harbour Towne Marina, 850 NE 3rd St,
STE 213, Dania, FL 33004