

ONWARD — BENETEAU



Судостроитель: BENETEAU

Год постройки: 1985

Цена: **ЦЕНА ЯХТЫ ПО ЗАПРОСУ**

Местонахождение: United States

Длина общая: 42' 0" (12.80m)

Ширина: 13' 1" (3.99m)

Макс. осадка: 7' 1" (2.16m)

Купить **Onward — BENETEAU** а также выбрать подходящую вам яхту из нашего каталога яхт вам поможет опытный яхтенный брокер Андрей Шестаков. На сегодняшний день компания **Shestakov Yacht Sales Inc.** имеет большое количество яхт в собственном списке продаж, а также тесно сотрудничает со всеми крупными яхтенными производителями по всему миру.

Для того чтобы купить яхту **Onward — BENETEAU** а также проконсультироваться по любому вопросу связанному с покупкой, продажей, чартером яхт позвоните по телефону **+7(918)465-66-44**.

ОГЛАВЛЕНИЕ

ОГЛАВЛЕНИЕ	2
ХАРАКТЕРИСТИКИ	3
Обзор	3
Основная информация	3
Размеры	3
Скорость, вместимость и масса	4
Корпус и палуба	4
Информация о двигателе	4
ПОДРОБНОЕ ОПИСАНИЕ	5
Исключения	6
Отказ от ответственности	7
ФОТОГРАФИИ	8
КОНТАКТЫ	18
Контактная информация	18
Телефоны	18
Время работы	18
Адрес	18

ХАРАКТЕРИСТИКИ

Обзор

ANOTHER PRICE REDUCTION! This is a lovely one owner vessel that is seriously for sale. If you are looking for a performance yacht that is actually comfortable to spend time on, look no further, Onward is the boat for you. She has been well maintained and looked after. The owner had her commissioned and launched so she would be ready for her next owner. This is a lot of boat for the dollar! Come make us an offer and get out there and start sailing today! Designed by the Argentinian architect German Frers, creator of some of the most splendid sailing boats in the world. The First 42 is an exceptional model, probably one of the jewels of the French nautical industry. There were many racer/cruisers built in the 1980's, but one stood out - the Beneteau First 42. Under sail in light or heavy air, Onward is a true club racer with an abundant sail inventory and all necessary deck hardware for controlled speed. She is built with a solid hand-laid fiberglass hull, open deck space and a comfortable cockpit for your crew. All lines are run into the cockpit for ease in single handling. Her interior is lovely and offers a comfortable live-aboard space. She has 6 berths sleeping 8 guests or crew with good storage for long distance cruising or racing. She holds a PHRF rating in the Chesapeake of 72. Onward has been well taken care of. In 2013 she received a new mast and standing rigging with all work performed by one of the top yards in the Chesapeake Bay. The owner is no longer able to enjoy her and has offered her for sale. If you are looking for a true racer, but enjoy some of the creature comforts, look no further.

Основная информация

Модельный год: 1985

Год постройки: 1985

Страна: United States

Размеры

Длина общая: 42' 0" (12.80m)

Длина по ватерлинии: 36' 11" (11.25m)

Ширина: 13' 1" (3.99m)

Макс. осадка: 7' 1" (2.16m)

Трапы: 57' 4" (17.47m)

Длина привального бруса: 42' 0"
(12.80m)

Скорость, вместимость и масса

Водоизмещение: 21000 Pounds

Вместимость воды: 105 Gallons

Объем топливного бака: 39 Gallons

Корпус и палуба

Материал корпуса: Fiberglass

Информация о двигателе

Двигатели: 1

Производитель: Perkins

Модель: 4108

Тип двигателя: Inboard

Тип топлива: Diesel

ПОДРОБНОЕ ОПИСАНИЕ

Accommodations She has a lovely interior configuration. Starting forward and aft of the chain locker is the master stateroom with Pullman berth to port and seating area to starboard. Aft to port is the first head with lockers to starboard. Going aft you enter the main salon; She has a large U-shaped dinette to port with pilot berth outboard and storage under the pilot. To starboard is a settee with pilot outboard and storage under the pilot as well. Centerline drop leaf table can accommodate a full crew for dining. Aft of the dinette on port is the U-shaped sea galley followed by the aft stateroom with large quarter berth and lockers. Opposite the galley is the Navigation station followed by the second head. She has lovely rich woodwork below with teak and holly sole, that coupled with her updated rich blue fabrics makes for a warm and inviting interior. She has numerous hatches and vents for excellent ventilation. She has fabric shades for all the ports.

Galley She has a true "Sea Galley" with plenty of counter and cabinet space for storage as well as food preparation. 2 Custom insulated Ice boxes Gimballed ENO stove with oven Double stainless steel sinks with hot and cold pressure water and chopping block top All galley gear conveys with the vessel

Deck Equipment Stainless steel bow and stern pulpit with side stanchions and double life lines with aft and side gates Double anchor roller Double anchor lockers on foredeck Stainless steel Sissy bars/leaning bars port and stb of the mast Stainless steel boarding ladder o transom Anchor with chain and rode 4 hatches Lana companionway boards Large stainless steel wheel Teak cockpit grate Room under the cockpit grate for life raft Aluminum Toe Rail Cockpit bimini Dock lines Cockpit cushions

Electronics Garmin 4212 oversized color chart plotter at the Nav station Belt driven autopilot Standard Horizon VHF Sony Drive-s MP3 Stereo Datamarine Tri-data

Sails and Rigging In 2016 Onward had a new mast and standing rigging installed. She has numerous sets of sails for both racing and cruising. All lines are led aft to the cockpit for ease in single handing. 4 Mains - 1 racing main (like new), 2nd ring main (used), 3rd main by Elvsrom and a 4th main used for cruising that is presently on the boat and in very good condition 4 Genoas - 1 genoa (good condition), 150% light air (excellent condition), a 110% genoa (good condition), 130% cruising genoa on the boat. 2 Spinnakers - 1 is a 3/4oz and the 2nd is 1/2oz (UK sailmaker) 2 Staysails - 1 (like new) and the 2nd (good condition) 3 Jibs - 1 by Elvstrom and the 2nd is a 110% for cruising (on the boat), the 3rd is a light air jib 2016 Harken roller furling for headsail Spinnaker Pole Newmar winches - 2 sp #40 on cabin top, 3sp #65 primaries, tsp #55

secondaries

Mechanical and Electrical Perkins 4108 50HP engine with Approx 2200 hours 12V DC 110V/30amp AC shore power with cord Battery safety switches in aft stateroom Manual bilge pump electric bilge pump All new mast lights in 2016

Maintenance through the years 1999 Upgraded electrical wiring - added ground fault outlets and upgraded AC breaker panel Installed 20" inboard tracks for #3 jib with polished stainless steel backing plates New teak cockpit grate Replaced wiring between battery and battery switch Replaced wiring from the starter motor and battery switch Rewired alternator output 2000 Installed new regulator Installed 150amp ammeter and shunt bar 2002 Strip/sand/varnish around the interior of companionway and companionway steps Replace headliner in aft cabin Forward head hoses replaced 2003-2012 Pulled every year for dry storage - sails pulled - canvas pulled - all systems winterized - oil changed - hull polished During the winter of 2012, a limb broke from a tree and knocked her from her stands thus breaking her mast. 2013 New mast New standing rigging New furler New masthead sender for wind instruments Awl gripped hull Checked all seacocks - Thru hulls removed, cleaned and re-installed Rudder bearing replaced Re-packed rudder stuffing box New bow pulpit and life lines New domestic water filter Repair her cold start for engine Installed LPG solenoid switch in galley New fuel lines Cetol'd her exterior wood Updated safety equipment 3 new CO detectors New water heater New steering cable Serviced winches New spinnaker lift line New spinnaker halyard replaced 2 group 31 batteries Replaced voltmeter 2015 Replaced Battery charger at Nav station Replaced re extinguishers Replaced front crank seal 2016 Removed old fuel, used tank, and added fresh fuel Service and lube Maxprop 2018 Service and Lube Maxprop Replace batteries Every year she is pulled and stored on land. Systems winterized and maintained, sails and canvas pulled for proper winter storage. This owner has loved her for over 25 years and gone to great lengths to attend to anything she needed. The First 42 originally had "Bladder" tanks for the water system. Her owner has replaced those with fixed hard plastic tanks.

Disclaimer The Company offers the details of this vessel in good faith but cannot guarantee or warrant the accuracy of this information nor warrant the condition of the vessel. A buyer should instruct his agents, or his surveyors, to investigate such details as the buyer desires validated. This vessel is offered subject to prior sale, price change, or withdrawal without notice.

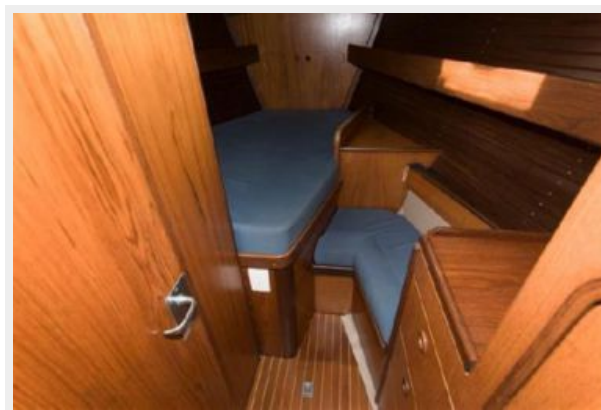
Исключения

При продаже яхты исключаются личные вещи владельца.

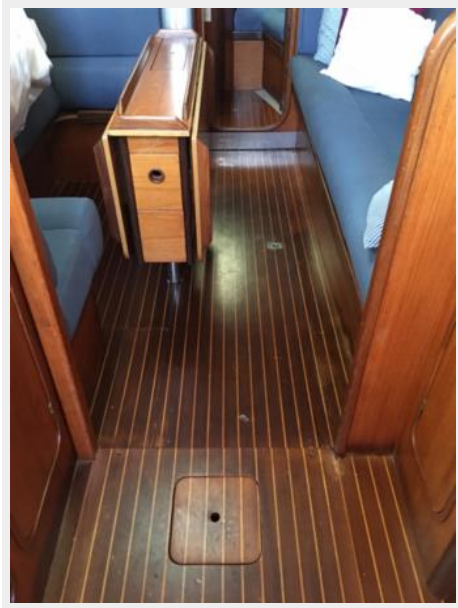
Отказ от ответственности

Компания предоставляет описание судна или яхты добросовестно, но не может гарантировать точность этой информации, а также не ручается за техническое состояние. Покупатель должен проинструктировать своих агентов или оценщиков исследовать представленную информацию более подробно, по собственному желанию. Продажа судна или яхты, изменение цены или снятие с продажи будет происходить без предварительного уведомления.

ФОТОГРАФИИ

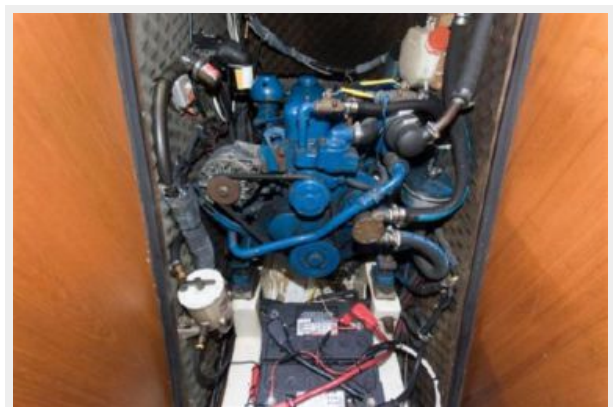


















КОНТАКТЫ

Андрей Шестаков (Andrey Shestakov) – ведущий яхтенный брокер отдела продаж яхт и судов компании Shestakov Yacht Sales Inc. Официальный представитель Shestakov Yacht Sales Inc. для русскоговорящих клиентов в центральном офисе компании в Майами/Форт Лодердейл/Флорида/США.

Контактная информация

Email: andrey@shestakovyachtsales.com

Web: shestakovyachtsales.com

Телефоны

Краснодарский край: **+7(918)465-66-44**

США, Майами, Флорида: **+1(954)274-4435**

Время работы

Понедельник – Суббота: **9:00 - 21:00**
EDT

Воскресенье: **Закрито**

Адрес



Harbour Towne Marina, 850 NE 3rd St,
STE 213, Dania, FL 33004