

## CONCORDE — GULFSTAR



**Builder:** GULFSTAR

**Year Built:** 1977

**Price:** PRICE ON APPLICATION

**Location:** United States

**LOA:** 37' 0" (11.28m)

**Beam:** 11' 9" (3.56m)

**Max Draft:** 4' 6" (1.37m)

Our experienced yacht broker, Andrey Shestakov, will help you choose and buy a yacht that best suits your needs **Concorde — GULFSTAR** from our catalogue. Presently, at Shestakov Yacht Sales Inc., we have a wide variety of yachts available on our sale's list. We also work in close contact with all the big yacht manufacturers from all over the world.

If you would like to buy a yacht **Concorde — GULFSTAR** or would like help answering any questions concerning purchasing, selling or chartering a yacht, please call **+1(954)274-4435**

---

# TABLE OF CONTENTS

---

TABLE OF CONTENTS	2
SPECIFICATIONS	3
Overview	3
Basic Information	3
Dimensions	3
Speed, Capacities and Weight	3
Hull and Deck Information	4
Engine Information	4
DETAILED INFORMATION	5
Exclusions	6
Disclaimer	6
PHOTOS	7
CONTACTS	13
Contact details	13
Telephones	13
Office hours	13
Address	13

---

# SPECIFICATIONS

---

## Overview

---

Concorde a Gulf Star 37 designed by Vince Lazara this classic cruising Gulf Star has been well maintained by a renown boatyard with upgrades and maintenance through the years of ownership. The standard Perkin Diesel has been replaced by a Beta Marine 43 model diesel, transmission & running gear including a new max prop with spurs. The Gulf Star 37 is known for its great cruising capabilities for the novice or the seasoned sailor. Family and friends will enjoy the spacious cockpit and interior with its large settee area below, navigation station to starboard, galley to port with all the amenities (double stainless steel sinks, large ice box and a Shipmate stove/oven. Forward a large V berth with plenty of storage and a separate door to the head. Top deck is nicely appointed with Barent winches, battened sails, jib furler and an Edson pedestal steering station with a new hybrid touch RayMarine GPS Radar unit. The hull is Awl Grip Navy Blue, the bottom has been well taken care of her owners are ready to move on. She is presently in storage located in Branford, CT

## Basic Information

---

**Model Year:** 1977

**Year Built:** 1977

**Country:** United States

## Dimensions

---

**LOA:** 37' 0" (11.28m)

**LWL:** 32' 0" (9.75m)

**Beam:** 11' 9" (3.56m)

**Max Draft:** 4' 6" (1.37m)

**MFG Length:** 37' 0" (11.28m)

## Speed, Capacities and Weight

---

**Displacement:** 19500 Pounds

**Water Capacity:** 80 Gallons

**Fuel Capacity:** 30 Gallons

---

## Hull and Deck Information

---

**Hull Material:** Fiberglass

## Engine Information

---

**Engines:** 1

**Manufacturer:** Beta

**Model:** B 43

**Engine Type:** Inboard

**Fuel Type:** Diesel

---

# DETAILED INFORMATION

---

---

## Sails and Rigging

- Battened Main Sail
- Jib Furler with Jib - 10 yrs. old
- 2 Bariant # 27 self tailing winches
- 1 Bariant # 21 cabin top mount winch
- 2 Bariant winches mount on the mast

---

## Electronics and Instruments

- RayMarine Hybrid Touch GPS Radar unit
- ST 6000 Auto helm
- Standard Horizon Nova VHF Marine Radio
- Furuno GPS Navigator
- Blaupunkt Stereo
- Kenyon Apparent Wind
- DataMarine knot Meter
- Kenyon Anemometer
- DataMarine Log Meter

---

## Electrical

- 30 Amp 120V system with power shore power cord
- Battery charger circuit
- Hot water heater circuit
- Port and Starboard 120 V receptacles circuits

---

## Mechanical

- B 43 Beta Marine Diesel (2017) with 300 hours
- New running gear with max prop & spurs (2017)
- Water Heater 6 gallon
- Pressure water system hot & cold

---

**Disclaimer** The Company offers the details of this vessel in good faith but cannot guarantee or warrant the accuracy of this information nor warrant the condition of the vessel. A buyer should

instruct his agents, or his surveyors, to investigate such details as the buyer desires validated. This vessel is offered subject to prior sale, price change, or withdrawal without notice.

## Exclusions

---

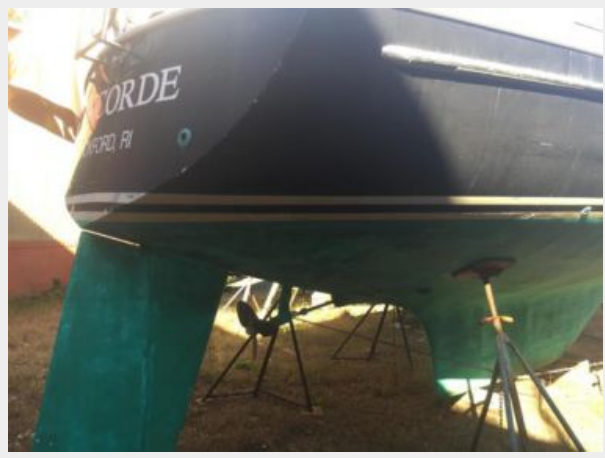
Owner's personal belongings.

## Disclaimer

---

The Company offers the details of this vessel or yacht in good faith but cannot guarantee or warrant the accuracy of this information nor warrant the condition of the vessel. A buyer should instruct his representatives, agents, or his surveyors, to investigate such details as the buyer desires validated. This vessel or yacht is offered subject to prior sale, price change, or withdrawal without notice.

# PHOTOS

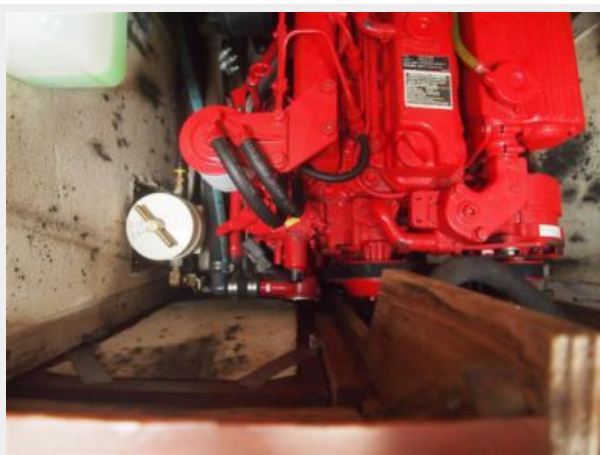














# CONTACTS

---

Andrey Shestakov, leading yacht broker of the sales department of Shestakov Yacht Sales Inc. Shestakov Yacht Sales Inc., the official representative of the Miami/Fort Lauderdale FL headquarters.

## Contact details

---

Email: [andrey@shestakovyachtsales.com](mailto:andrey@shestakovyachtsales.com)

Web: [shestakovyachtsales.com/en/](http://shestakovyachtsales.com/en/)

## Telephones

---

USA: +1(954)274-4435

## Office hours

---

Monday – Saturday: **9:00 - 21:00** EDT

Sunday: **closed**

## Address

---



Harbour Towne Marina, 850 NE 3rd St,  
STE 213, Dania, FL 33004