

GREAT BLISS — BENETEAU



Builder: BENETEAU

Year Built: 2014

Price: PRICE ON APPLICATION

Location: United States

LOA: 45' 0" (13.72m)

Beam: 14' 9" (4.50m)

Max Draft: 5' 9" (1.75m)

Our experienced yacht broker, Andrey Shestakov, will help you choose and buy a yacht that best suits your needs **Great Bliss — BENETEAU** from our catalogue. Presently, at **Shestakov Yacht Sales Inc.**, we have a wide variety of yachts available on our sale's list. We also work in close contact with all the big yacht manufacturers from all over the world.

If you would like to buy a yacht **Great Bliss — BENETEAU** or would like help answering any questions concerning purchasing, selling or chartering a yacht, please call **+1(954)274-4435**

TABLE OF CONTENTS

| | |
|------------------------------|----|
| TABLE OF CONTENTS | 2 |
| SPECIFICATIONS | 3 |
| Overview | 3 |
| Basic Information | 3 |
| Dimensions | 3 |
| Speed, Capacities and Weight | 3 |
| Accommodations | 3 |
| Hull and Deck Information | 4 |
| Engine Information | 4 |
| DETAILED INFORMATION | 5 |
| Exclusions | 6 |
| Disclaimer | 6 |
| PHOTOS | 7 |
| CONTACTS | 15 |
| Contact details | 15 |
| Telephones | 15 |
| Office hours | 15 |
| Address | 15 |

SPECIFICATIONS

Overview

The Oceanis 45 won the prestigious 2012 European Sailboat of the Year award in the family cruiser category. Great Bliss is sleek and beamy with hard chines above the waterline, mainsheet arches and a low-profile coachroof. She's an attractive, well-conceived cruising boat that appeals to sailors who like clean modern styling combined with conventional accommodations. The large, practical fold-down transom is particularly helpful to families who like to spend time in the water and will also find favor with those who put a premium on easy tender access. She is well equipped and ready for her 2nd owner. Please call for an appointment to see her.

Basic Information

Model Year: 2014

Year Built: 2014

Country: United States

Dimensions

LOA: 45' 0" (13.72m)

LWL: 42' 10" (13.06m)

Beam: 14' 9" (4.50m)

Max Draft: 5' 9" (1.75m)

MFG Length: 45' 0" (13.72m)

Speed, Capacities and Weight

Displacement: 21048 Pounds

Water Capacity: 151 Gallons

Holding Tank: 21 Gallons

Fuel Capacity: 53 Gallons

Accommodations

Total Cabins: 3

Total Heads: 2

Hull and Deck Information

Hull Material: Fiberglass

Engine Information

Engines: 1

Manufacturer: Yanmar

Model: 4JH5CE

Engine Type: Sail Drive

Fuel Type: Diesel

DETAILED INFORMATION

ConstructionThe hull is solid fiberglass set in polyester, while the deck, also fiberglass, is injection-molded and cored with end-grain balsa. The hull-deck joint is bonded with adhesive and fastened with screws. The hull is stiffened with a monolithic inner structural molding that is bonded in place. The keel, with cast-iron ballast, is bolted on with stainless steel fasteners and backing plates. The stock for the single spade rudder is fiberglass. The 9/10ths fractional rig features an aluminum mast with double spreaders and discontinuous stainless steel standing rigging.

On DeckThe deck and cockpit layout is clean and functional. All hatches forward of the companionway are flush with the deck, in the contemporary style. All working lines run aft, with the jibsheets coming to self-tailing winches on the cockpit coamings within easy reach of the twin helm stations aft. All other lines, including mainsail controls, come to a pair of winches on the coachroof either side of the companionway. The cockpit is very wide and has a large fixed table with folding leaves, so crew can easily brace themselves to windward when the boat is heeled. Helm ergonomics are good, with clear sightlines forward and a mix of comfortable steering positions. A long bench seat directly abaft the wheels makes it easy for others to come aft and socialize with the helmsperson. The cockpit's electrically controlled full-width fold-down transom is a nice feature. With just a touch of a button, the entire transom, including that bench seat behind the helms, folds down flat to form an immense teak-covered beach that sits nearly flush with the water. This makes it very easy for small pets and even infants to crawl on and off the boat from a tender.

AccommodationsGreat Bliss has three staterooms with two heads. Two aft staterooms with lots of light and headroom and proper double berths that don't have bites taken out of them to accommodate the engine space. The starboard aft stateroom has direct access to the 2nd head. The forward stateroom is very roomy with lots of private storage, a generous island double berth and a private ensuite head and shower.

GalleyThe well-equipped galley is just forward of the port aft stateroom.

DisclaimerThe Company offers the details of this vessel in good faith but cannot guarantee or warrant the accuracy of this information nor warrant the condition of the vessel. A buyer should instruct his agents, or his surveyors, to investigate such details as the buyer desires validated. This vessel is offered subject to prior sale, price change, or withdrawal without notice.

Exclusions

Owner's personal belongings.

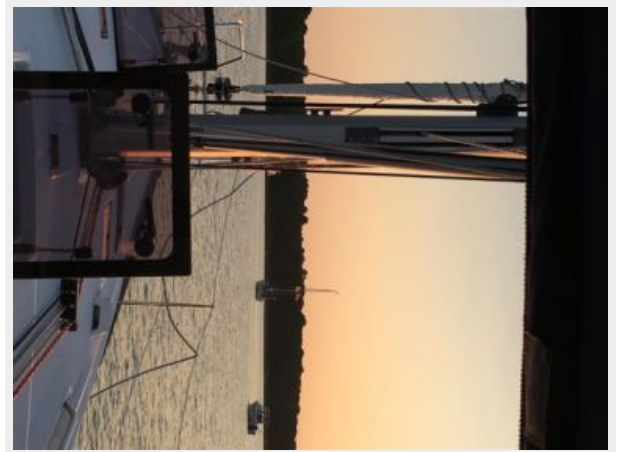
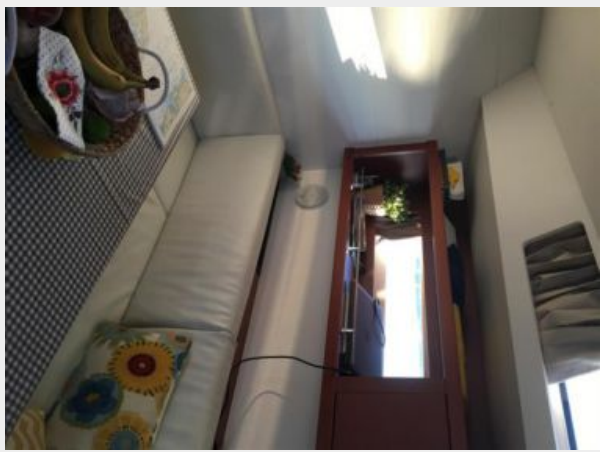
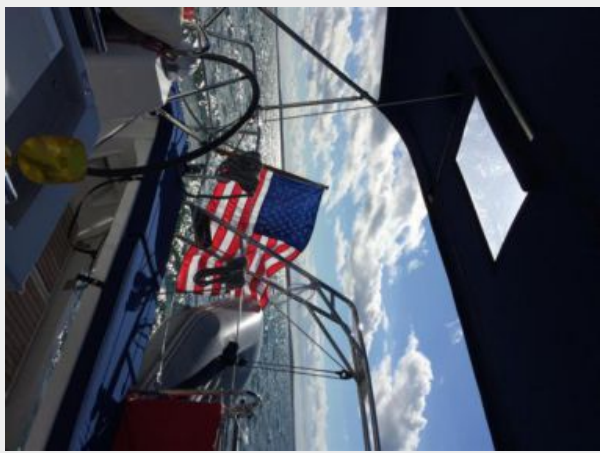
Disclaimer

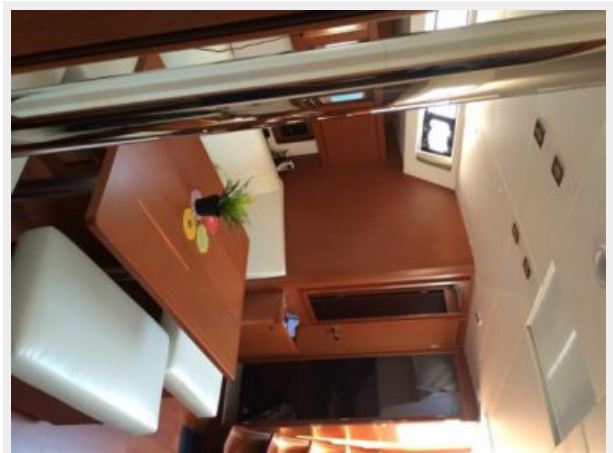
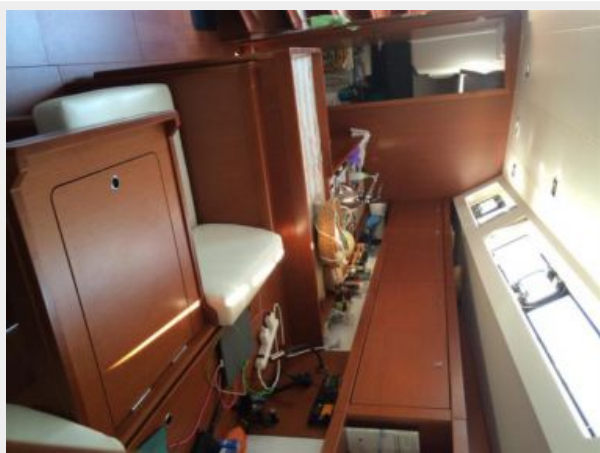
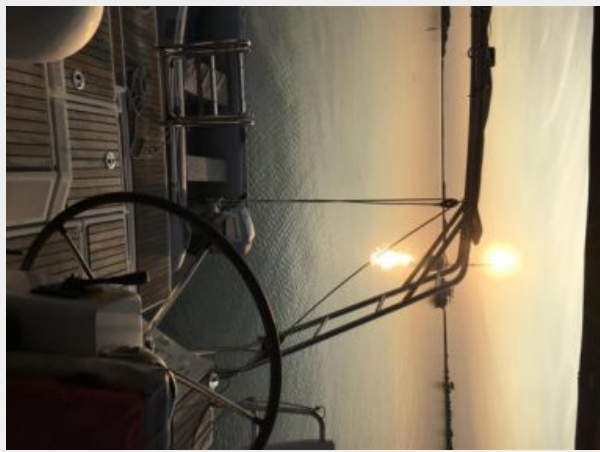
The Company offers the details of this vessel or yacht in good faith but cannot guarantee or warrant the accuracy of this information nor warrant the condition of the vessel. A buyer should instruct his representatives, agents, or his surveyors, to investigate such details as the buyer desires validated. This vessel or yacht is offered subject to prior sale, price change, or withdrawal without notice.

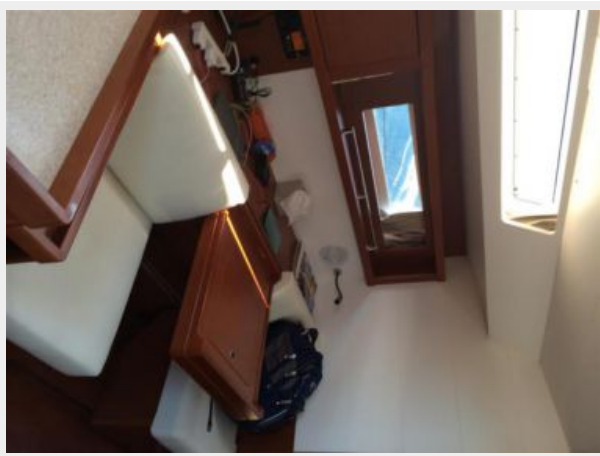
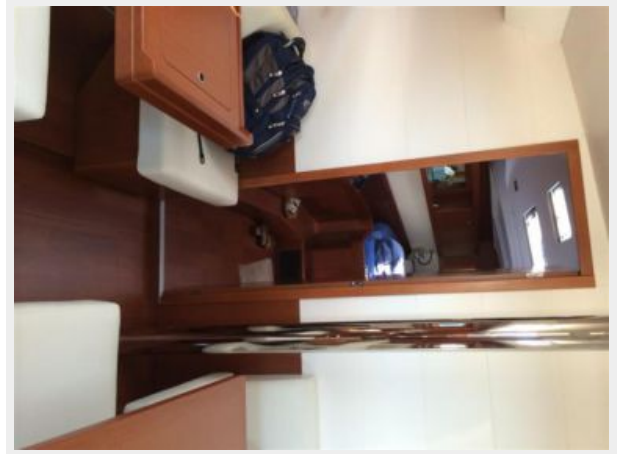
PHOTOS



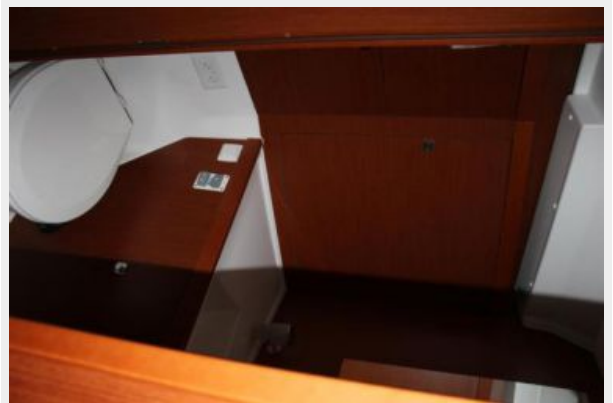














CONTACTS

Andrey Shestakov, leading yacht broker of the sales department of Shestakov Yacht Sales Inc. Shestakov Yacht Sales Inc., the official representative of the Miami/Fort Lauderdale FL headquarters.

Contact details

Email: andrey@shestakovyachtsales.com

Web: shestakovyachtsales.com/en/

Telephones

USA: +1(954)274-4435

Office hours

Monday – Saturday: **9:00 - 21:00** EDT

Sunday: **closed**

Address



Harbour Towne Marina, 850 NE 3rd St,
STE 213, Dania, FL 33004