

GORA — CUSTOM



Builder: CUSTOM

Year Built: 2011

Model: Cruising Ketch

Price: PRICE ON APPLICATION

Location: Turkey

LOA: 130' 7" (39.8mm)

Beam: 28.77

Max Draft: 13' 11" (4.24mm)

Our experienced yacht broker, Andrey Shestakov, will help you choose and buy a yacht that best suits your needs **GORA — CUSTOM** from our catalogue. Presently, at Shestakov Yacht Sales Inc., we have a wide variety of yachts available on our sale's list. We also work in close contact with all the big yacht manufacturers from all over the world.

If you would like to buy a yacht **GORA — CUSTOM** or would like help answering any questions concerning purchasing, selling or chartering a yacht, please call **+1(954)274-4435**

TABLE OF CONTENTS

TABLE OF CONTENTS	2
SPECIFICATIONS	3
Overview	3
Basic Information	3
Dimensions	3
Speed, Capacities and Weight	4
Accommodations	4
Hull and Deck Information	4
Engine Information	4
PHOTOS	5
CONTACTS	10
Contact details	10
Telephones	10
Office hours	10
Address	10

SPECIFICATIONS

Overview

GORA, the yacht with a soul...

She was built in 2011 by the Owner at custom wood hull builders in Bodrum, Turkey. Top quality materials were used at the construction. She was equipped with high standard materials. She was built with RINA class.

State of art wood craftsmanship on board. The owner spent more time than anyone just to build her perfect during the construction.

Teak quality at decks and interior floors are amazing. Real classic yacht feeling at modern ketch.

2 master cabins, 3 VIP cabins in total 5 cabins for 12 guests

There are times that you look at the sea and only see the yachts go by... But, there are times that you look at the sea and see a yacht that takes you away... GORA is one of them. She is 38 meters long and specially tailored to fulfill your expectations on the water. With two master cabins, two family and a romance cabin she can easily entertain twelve guest on board.

Each cabin is soundproof and has it is own Bose music system, HD TV and a minibar, FRETTE luxury linens and HAMAM.

GORA especially designed to give every guest onboard the privacy that they deserve while giving them the freedom.

Basic Information

Category: Cruising Ketch

Sub Category: Cruising Sailboat

Model Year: 2011

Year Built: 2011

Country: Turkey

Dimensions

LOA: 130' 7" (39.8mm)

Beam: 28.77

Max Draft: 13' 11" (4.24mm)

Speed, Capacities and Weight

Gross Tonnage: 207 Pounds

Accommodations

Total Cabins: 5

Total Berths: 10

Total Heads: 5

Hull and Deck Information

Hull Material: Wood Epoxy

Engine Information

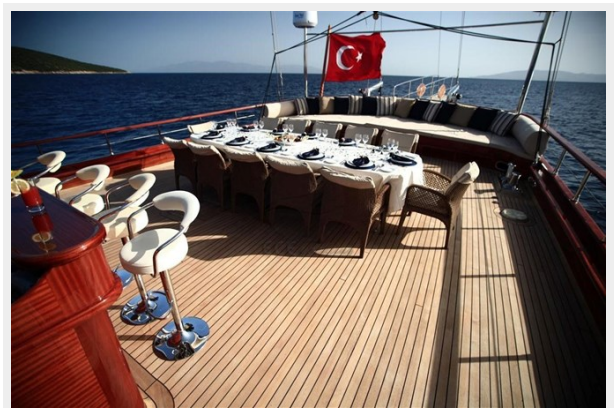
Engines: 2

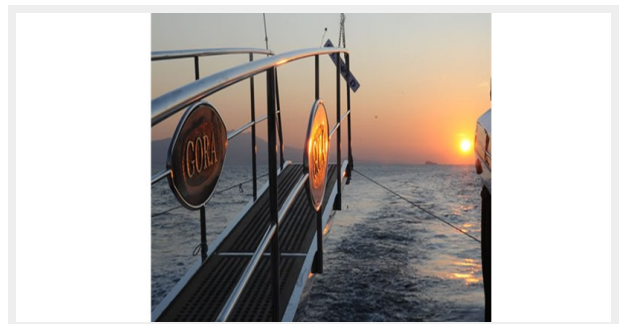
Manufacturer: Volvo

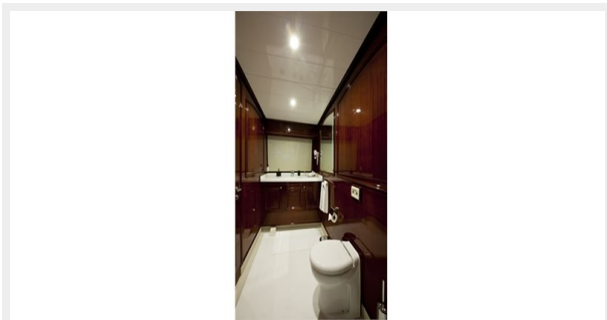
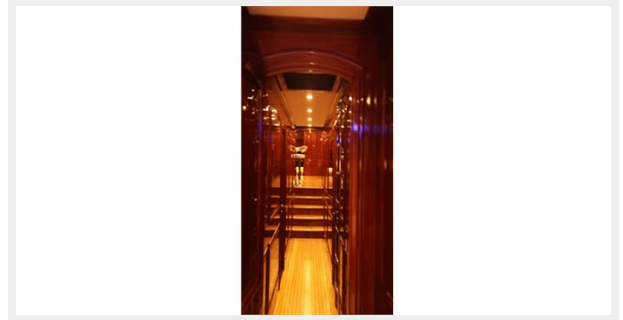
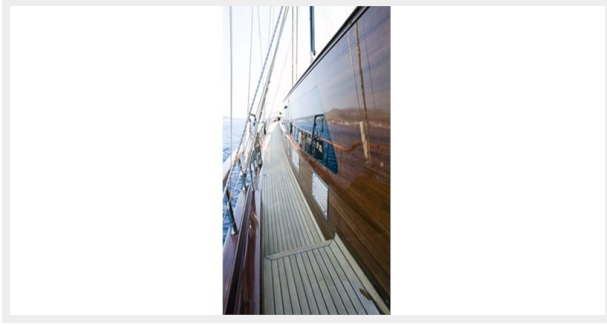
Engine Type: Inboard

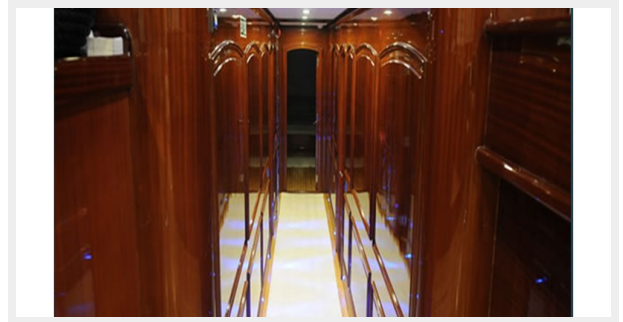
Fuel Type: Diesel

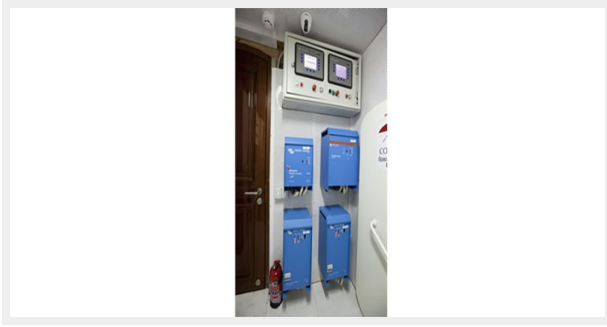
PHOTOS











CONTACTS

Andrey Shestakov, leading yacht broker of the sales department of Shestakov Yacht Sales Inc. Shestakov Yacht Sales Inc., the official representative of the Miami/Fort Lauderdale FL headquarters.

Contact details

Email: andrey@shestakovyachtsales.com

Web: shestakovyachtsales.com/en/

Telephones

USA: +1(954)274-4435

Office hours

Monday – Saturday: **9:00 - 21:00** EDT

Sunday: **closed**

Address



Harbour Towne Marina, 850 NE 3rd St,
STE 213, Dania, FL 33004