

WINDSWEPT — HINCKLEY



Builder: HINCKLEY

Year Built: 1972

Price: PRICE ON APPLICATION

Location: United States

LOA: 40' 0" (12.19m)

Beam: 11' 9" (3.58m)

Min Draft: 4' 6" (1.37m)

Max Draft: 8' 6" (2.59m)

Our experienced yacht broker, Andrey Shestakov, will help you choose and buy a yacht that best suits your needs **Windswept — HINCKLEY** from our catalogue. Presently, at Shestakov Yacht Sales Inc., we have a wide variety of yachts available on our sale's list. We also work in close contact with all the big yacht manufacturers from all over the world.

If you would like to buy a yacht **Windswept — HINCKLEY** or would like help answering any questions concerning purchasing, selling or chartering a yacht, please call **+1(954)274-4435**

TABLE OF CONTENTS

TABLE OF CONTENTS	2
SPECIFICATIONS	3
Overview	3
Basic Information	3
Dimensions	3
Speed, Capacities and Weight	4
Accommodations	4
Hull and Deck Information	4
Engine Information	4
DETAILED INFORMATION	5
Exclusions	6
Disclaimer	7
PHOTOS	8
CONTACTS	18
Contact details	18
Telephones	18
Office hours	18
Address	18

SPECIFICATIONS

Overview

"Windswept" has a lovely and tastefully decorated interior. Her beautiful woodwork is complimented by the updated ultra-suede dark blue cushions thru out as well as the high end fabric used for the curtains that extend from the master stateroom forward into her main salon. Starting forward and aft of the chain locker is the master stateroom. Comfortable V-berth with shelves outboard and drawers under. She has an additional bank of drawers aft of the berth to port and two large hanging lockers aft of the berth to starboard. A large hatch offers great light and ventilation. Next aft to port is the head with new Vacuflush toilet, sink with extension telephone shower, storage under sink as well as outboard. Her Main salon is the traditional Hinckley layout with port and starboard settees and pilot berths outboard. She has a fixed center-line table with drop leaves that also houses the centerboard cable. In addition, there is a bulkhead mounted table to accommodate more for dining when needed or tucks out of the way when not. Storage in abundance with drawers under all 4 of the berths. She has a cabin heater mounted on the forward starboard bulkhead for those chilly fall nights. All the way aft and athwartship of the companionway is her galley and navigation station. The majority of her galley is to port and L-shaped, housing her double sink, stove and oven, as well as her galley ware. To starboard is a huge ice chest that also serves as a stand up navigation station. She has cabinets outboard, chart storage, and electric panel. her engine access is via the companionway steps and cabinet under the sinks. Up her steps and one the bridge deck is a large and deep cockpit with lovely teak combing backs, new Edson pedestal with wood wheel, main sheet, primary and secondary winches, as well as a large lazarette aft with custom Radar stand.

Basic Information

Model Year: 1972

Year Built: 1972

Country: United States

Dimensions

LOA: 40' 0" (12.19m)

Beam: 11' 9" (3.58m)

Min Draft: 4' 6" (1.37m)

Max Draft: 8' 6" (2.59m)

MFG Length: 40' 0" (12.19m)

Speed, Capacities and Weight

Displacement: 19000 Pounds

Water Capacity: 110 Gallons

Holding Tank: 20 Gallons

Fuel Capacity: 48 Gallons

Accommodations

Total Heads: 1

Hull and Deck Information

Hull Material: Fiberglass

Engine Information

Engines: 1

Manufacturer: Westerbeke

Model: 4.107

Engine Type: Inboard

Fuel Type: Diesel

DETAILED INFORMATION

GalleyThe galley is well equipped with double stainless steel sinks with hot and cold pressure water, Shipmate 3 burner stove with oven, Huge ice compartment and plenty of storage outboard both port and starboard. She has white formica counter tops and lots of room for food preparation.

Electronics

- Northstar 800 Loran
 - SEA 222 Single Side Band Radio
 - Icom 0- M120 VHF
 - JVC speakers
 - Magnavox MX 4102 Sat. Nav.
 - Furuno Radar
 - Pedestal compass
 - Raytheon wind direction
 - Data marine speed and depth sounder (new)
 - Autohelm 3000
 - Clock and Barometer
-

Electrical

- 12V and 110V with shore power cord
 - Carbon Monoxide sensor
 - Lighting thru-out
-

Deck Equipment

- Stainless steel bow and stern pulpits with side stanchions and single life lines with gates port and starboard
 - Teak cockpit table
 - Cockpit cushions
 - Lovely teak folding cockpit table
 - 3 Chrome Cowl vents
 - 2 large hatches
 - New Edson pedestal with wood steering wheel
 - 2 Danforth anchors on teak chocks on cabin top
 - Stainless steel anchor roller on stainless steel stem fitting
 - Electric windlass
-

-
- Anchor chain
 - Wind vane
 - Dock lines
 - Bumpers.fenders
 - Inflatable dinghy
 - Teak hand rails
 - Teak tow realist
 - Teak combings
 - Teak lazaretto
 - Life jackets
 - Horse shoe life ring

Sails and Rigging

- Awlgripped Carbon Fiber mast and boom (mast hight is 51' with 7" below the cabin top)
- Stainless steel rod standing rigging
- Harken roller fuller for headsail
- Double turning blocks aft and mounted on stainless steel bracket
- Lare genoa sheet block forward on genoa track
- Updated running rigging
- #54 Lewmar self-tailing primary winches
- #22 Baronet secondary winches
- Main sail - Looks in great shape and stiff (not sure of the year)
- Genoa - Looks good and stiff (not sure of the year)

Mechanical

- Westerbeke Diesel engine
- Vacuflush Head (new)
- Force 10 Cabin heater

DisclaimerThe Company offers the details of this vessel in good faith but cannot guarantee or warrant the accuracy of this information nor warrant the condition of the vessel. A buyer should instruct his agents, or his surveyors, to investigate such details as the buyer desires validated. This vessel is offered subject to prior sale, price change, or withdrawal without notice.

Exclusions

Owner's personal belongings.

Disclaimer

The Company offers the details of this vessel or yacht in good faith but cannot guarantee or warrant the accuracy of this information nor warrant the condition of the vessel. A buyer should instruct his representatives, agents, or his surveyors, to investigate such details as the buyer desires validated. This vessel or yacht is offered subject to prior sale, price change, or withdrawal without notice.

PHOTOS



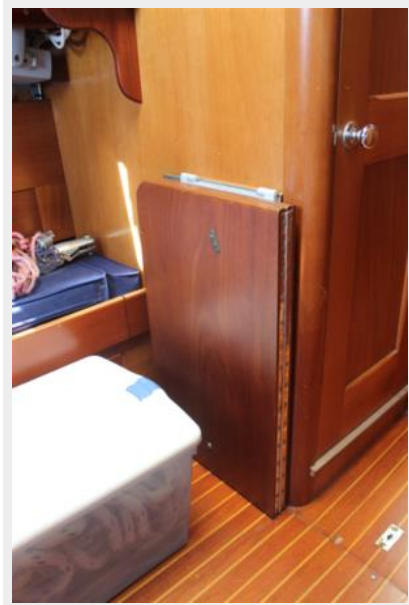




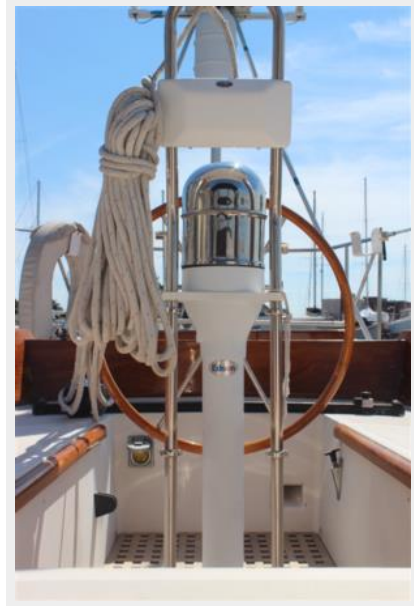


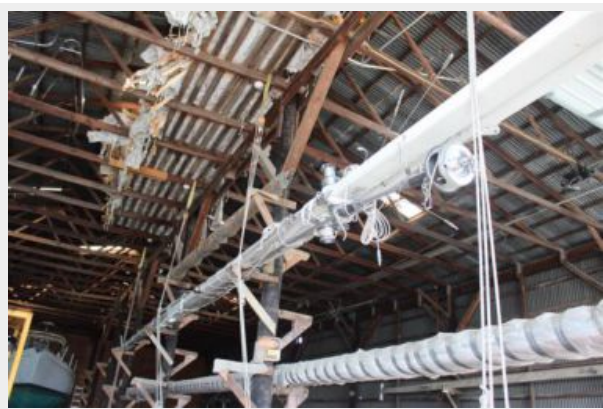












CONTACTS

Andrey Shestakov, leading yacht broker of the sales department of Shestakov Yacht Sales Inc. Shestakov Yacht Sales Inc., the official representative of the Miami/Fort Lauderdale FL headquarters.

Contact details

Email: andrey@shestakovyachtsales.com

Web: shestakovyachtsales.com/en/

Telephones

USA: +1(954)274-4435

Office hours

Monday – Saturday: **9:00 - 21:00** EDT

Sunday: **closed**

Address



Harbour Towne Marina, 850 NE 3rd St,
STE 213, Dania, FL 33004