

DREAM MAKER — WESTERLY



Builder: WESTERLY

Year Built: 1976

Price: PRICE ON APPLICATION

Location: United States

LOA: 36' 0" (10.97m)

Beam: 11' 3" (3.40m)

Min Draft: 6' 0" (1.83m)

Our experienced yacht broker, Andrey Shestakov, will help you choose and buy a yacht that best suits your needs **Dream Maker — WESTERLY** from our catalogue. Presently, at Shestakov Yacht Sales Inc., we have a wide variety of yachts available on our sale's list. We also work in close contact with all the big yacht manufacturers from all over the world.

If you would like to buy a yacht **Dream Maker — WESTERLY** or would like help answering any questions concerning purchasing, selling or chartering a yacht, please call **+1(954)274-4435**

TABLE OF CONTENTS

TABLE OF CONTENTS	2
SPECIFICATIONS	3
Overview	3
Basic Information	3
Dimensions	3
Speed, Capacities and Weight	3
Accommodations	3
Hull and Deck Information	4
Engine Information	4
DETAILED INFORMATION	5
Exclusions	5
Disclaimer	5
PHOTOS	7
CONTACTS	14
Contact details	14
Telephones	14
Office hours	14
Address	14

SPECIFICATIONS

Overview

Known as a solidly built (to Lloyds Standards), blue water cruising vessel, this one has been set up for liveaboard. A center cockpit ketch layout, she is seriously for sale here in Sales Tax free RI. Call to see her today.

Basic Information

Model Year: 1976

Year Built: 1976

Country: United States

Dimensions

LOA: 36' 0" (10.97m)

LWL: 30' 3" (9.22m)

Beam: 11' 3" (3.40m)

Min Draft: 6' 0" (1.83m)

MFG Length: 36' 0" (10.97m)

Speed, Capacities and Weight

Displacement: 16128 Pounds

Water Capacity: 75 Gallons

Fuel Capacity: 42 Gallons

Accommodations

Total Cabins: 3

Total Berths: 4

Total Heads: 2

Hull and Deck Information

Hull Material: Fiberglass

Engine Information

Engines: 1

Manufacturer: MERCEDES

Engine Type: Inboard

Fuel Type: Diesel

DETAILED INFORMATION

Full Specifications

Accommodations; Furthest forward is the V berth with custom mattress and storage cabinets underneath, a hanging locker to port and head to starboard. Next aft is the salon with u-shaped dinette to starboard with a folding gate table extended to the settee to port with outboard storage cabinets on both sides. The u-shaped galley is next aft to starboard, the navigation station next aft is the aft cabin pass through with storage outboard. Furthest aft is the master stateroom with a centerline queen, cabinets, hanging locker and a head to starboard. Galley; Neware 4 burner stove/icebox with refrigerator/freezer Stainless sink with hot and cold pressure water Sharp convection microwave oven Head; Vanity with hot and cold pressure water Shower with drain and sump Head, electric with y-valve, holding tank and deck pumpout

Electrical; 12vdc engine start battery 6 house batteries of 6 volts in series 2 solar panels on davits 3kw Honda 120vac gasoline generator 12vdc and 120vac electrical panels Battery voltage test meter

Electronics and Navigation; Standard Horizon Explorer VHF radio with DSC Raymarine radar Garmin GPSmap 541s Autohelm Tridata speed, depth, trip log CPT autopilot Henry Browne and Son Sestrel binnacle compass Pioneer Mixtrax AM/FM/CD stereo receiver Samsung flat screen tv Magnavox DVD player

Hull and Deck; Bow rail Bow sprit with dual bow rollers Bruce anchor, chain and rode Ideal windlass Side stanchions with double life lines Dorade boxes Bright finished generator enclosure Bright finished hard dodger Canvas covers for hatches, generator, hard dodger, sail covers and bimini BBQ grille Dinghy davits Stern pushpit with boarding ladder Sails and Rigging; Schaefer System 2100 roller furling headstay Genoa Mainsail Mizzen Lewmar 43ST primaries Lewmar 40 2 speed secondaries Mechanical Systems; Raw water sea strainer Fresh water cooling system

Disclaimer The Company offers the details of this vessel in good faith but cannot guarantee or warrant the accuracy of this information nor warrant the condition of the vessel. A buyer should instruct his agents, or his surveyors, to investigate such details as the buyer desires validated. This vessel is offered subject to prior sale, price change, or withdrawal without notice.

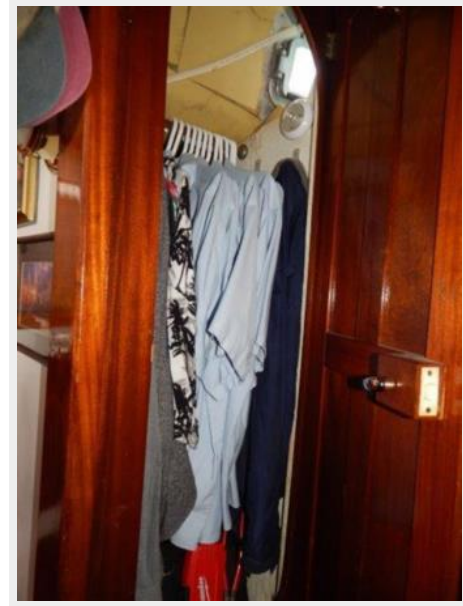
Exclusions

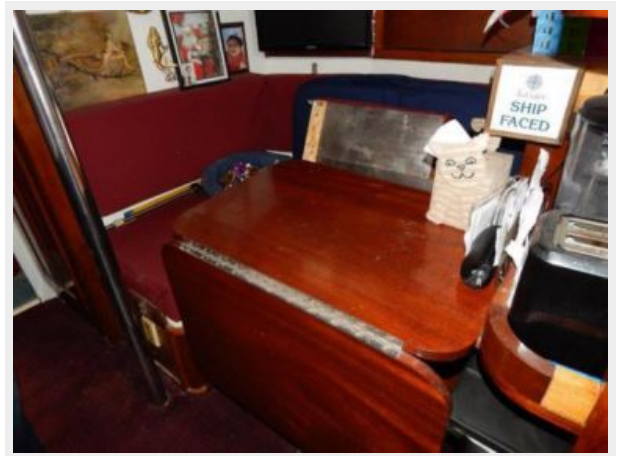
Owner's personal belongings.

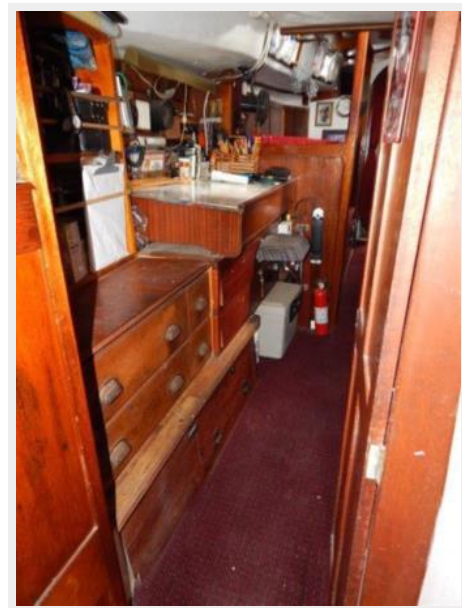
Disclaimer

The Company offers the details of this vessel or yacht in good faith but cannot guarantee or warrant the accuracy of this information nor warrant the condition of the vessel. A buyer should instruct his representatives, agents, or his surveyors, to investigate such details as the buyer desires validated. This vessel or yacht is offered subject to prior sale, price change, or withdrawal without notice.

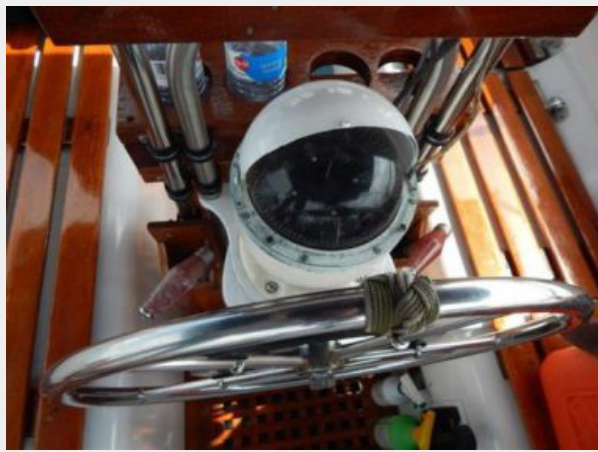
PHOTOS















CONTACTS

Andrey Shestakov, leading yacht broker of the sales department of Shestakov Yacht Sales Inc. Shestakov Yacht Sales Inc., the official representative of the Miami/Fort Lauderdale FL headquarters.

Contact details

Email: **andrey@shestakovyachtsales.com**

Web: shestakovyachtsales.com/en/

Telephones

USA: +1(954)274-4435

Office hours

Monday – Saturday: **9:00 - 21:00** EDT

Sunday: **closed**

Address



Harbour Towne Marina, 850 NE 3rd St,
STE 213, Dania, FL 33004