

ILARIA — VICTORIA



Builder: VICTORIA

Year Built: 1985

Price: PRICE ON APPLICATION

Location: United States

LOA: 29' 9" (9.07m)

Beam: 9' 6" (2.90m)

Max Draft: 4' 7" (1.40m)

Our experienced yacht broker, Andrey Shestakov, will help you choose and buy a yacht that best suits your needs **Ilaria — VICTORIA** from our catalogue. Presently, at Shestakov Yacht Sales Inc., we have a wide variety of yachts available on our sale's list. We also work in close contact with all the big yacht manufacturers from all over the world.

If you would like to buy a yacht **Ilaria — VICTORIA** or would like help answering any questions concerning purchasing, selling or chartering a yacht, please call **+1(954)274-4435**

TABLE OF CONTENTS

| | |
|------------------------------|----|
| TABLE OF CONTENTS | 2 |
| SPECIFICATIONS | 3 |
| Overview | 3 |
| Basic Information | 3 |
| Dimensions | 3 |
| Speed, Capacities and Weight | 3 |
| Accommodations | 4 |
| Hull and Deck Information | 4 |
| Engine Information | 4 |
| DETAILED INFORMATION | 5 |
| Exclusions | 5 |
| Disclaimer | 5 |
| PHOTOS | 6 |
| CONTACTS | 15 |
| Contact details | 15 |
| Telephones | 15 |
| Office hours | 15 |
| Address | 15 |

SPECIFICATIONS

Overview

Victoria 30 World renown, modern classic from the board of Chuck Paine. Rarely available, this cared for Victoria 30 has just been placed on the market. Owned in recent years by a professional mariner, this boat comes simply equipped but easy to maintain. The Victoria 30's were built by Northshore Yachts in the UK, most to Lloyds specification and differ to the US built boats of the same design, known as the Leigh 30's, by having encapsulated internal ballast. These boats are particularly well balanced and a joy sail both in coastal waters or offshore. The Victoria 30's are not a typical long keeled yacht, Chuck Paine drew a fair canoe body and treated the keel as an appendage rather than part of the underbody. This made the boats stiffer and more able to carry sail and tracked much better than a traditional boat of the same style. Currently shrink-wrapped and stored ashore in our yard here in Portsmouth, RI, the boat may be viewed by appointment. The current owner has embarked on another project and is keen to sell the Victoria, so reasonable offers will certainly be considered.

Basic Information

Model Year: 1985

Year Built: 1985

Country: United States

Dimensions

LOA: 29' 9" (9.07m)

LWL: 23' 4" (7.11m)

Beam: 9' 6" (2.90m)

Max Draft: 4' 7" (1.40m)

MFG Length: 30' 0" (9.14m)

Speed, Capacities and Weight

Displacement: 9010 Pounds

Water Capacity: 33 Gallons

Fuel Capacity: 12 Gallons

Accommodations

Total Cabins: 1

Total Berths: 5

Total Heads: 1

Hull and Deck Information

Hull Material: Fiberglass

Hull Designer: Chuck Paine

Engine Information

Engines: 1

Manufacturer: Yanmar

Model: 2GM20F

Engine Type: Inboard

Fuel Type: Diesel

DETAILED INFORMATION

Inventory Mainsail and furling genoa, very lightly used and quite new. Spare, used mainsail and genoa. Trysail. Mainsail cover. Bimini. Dodger. Cockpit cushions. Radar, GPS and VHF. C-Head, new in 2019. Gear box overhauled, 2016. Replacement of cutlass bearing, 2016. Electric 12Vdc refrigerator.

Disclaimer The Company offers the details of this vessel in good faith but cannot guarantee or warrant the accuracy of this information nor warrant the condition of the vessel. A buyer should instruct his agents, or his surveyors, to investigate such details as the buyer desires validated. This vessel is offered subject to prior sale, price change, or withdrawal without notice.

Exclusions

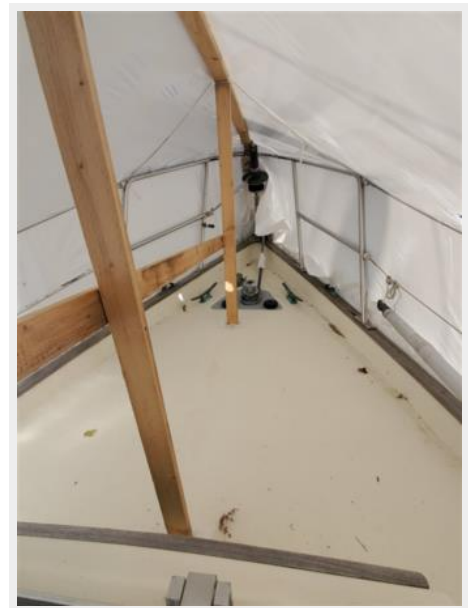
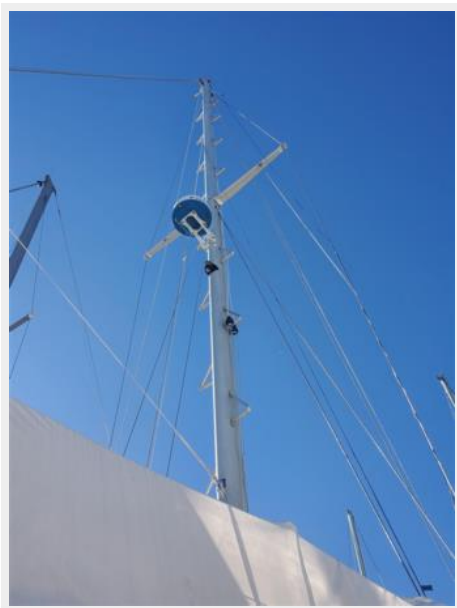
Owner's personal belongings.

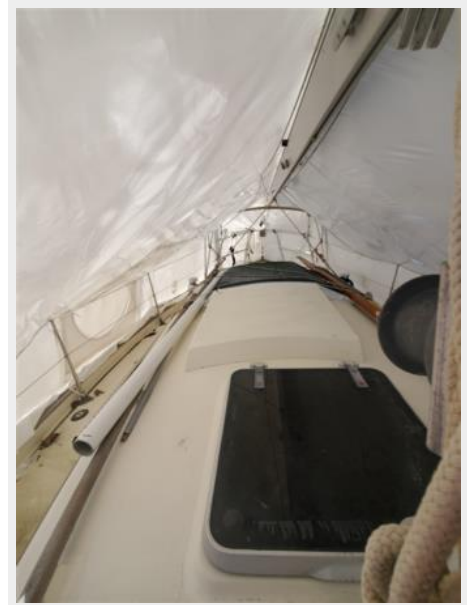
Disclaimer

The Company offers the details of this vessel or yacht in good faith but cannot guarantee or warrant the accuracy of this information nor warrant the condition of the vessel. A buyer should instruct his representatives, agents, or his surveyors, to investigate such details as the buyer desires validated. This vessel or yacht is offered subject to prior sale, price change, or withdrawal without notice.

PHOTOS



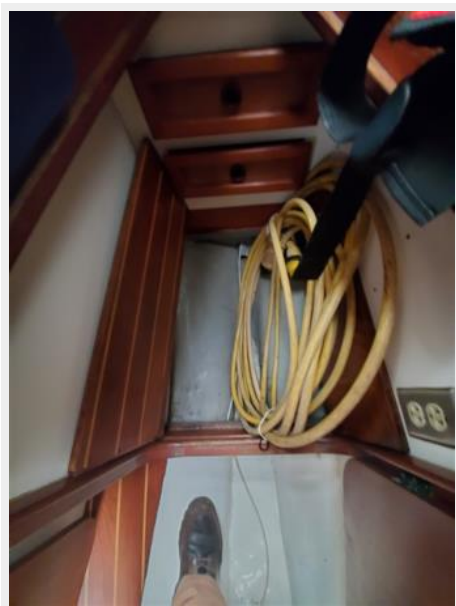
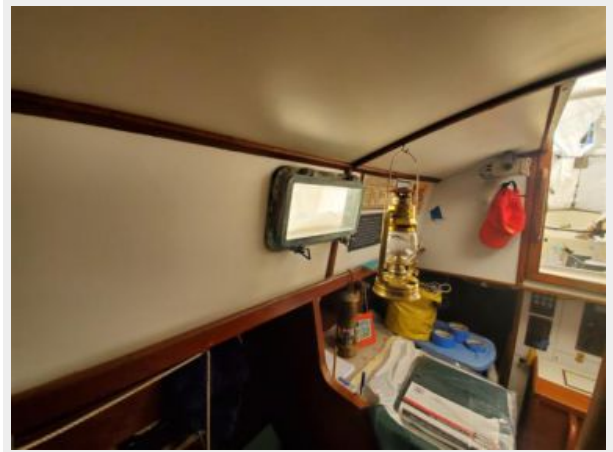
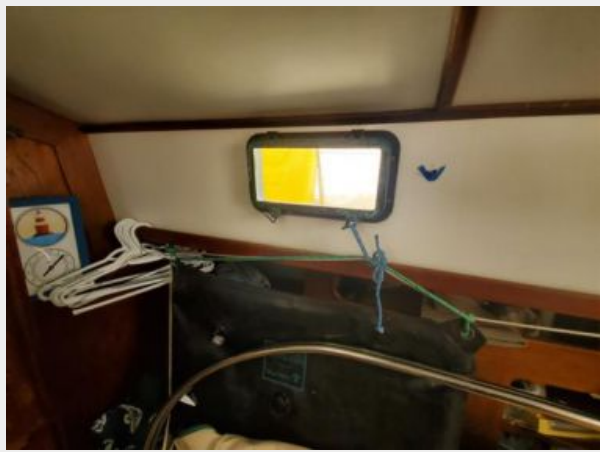




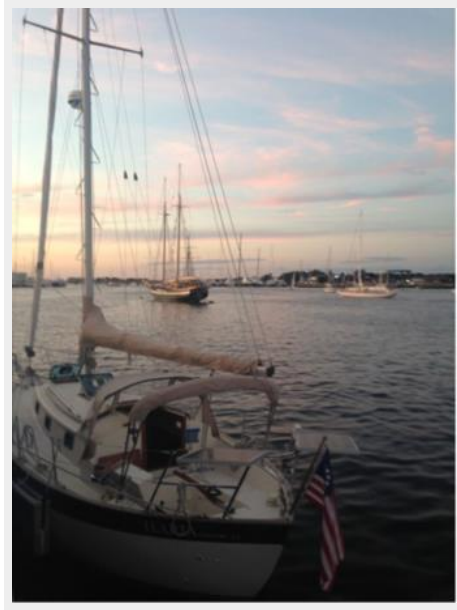












CONTACTS

Andrey Shestakov, leading yacht broker of the sales department of Shestakov Yacht Sales Inc. Shestakov Yacht Sales Inc., the official representative of the Miami/Fort Lauderdale FL headquarters.

Contact details

Email: andrey@shestakovyachtsales.com

Web: shestakovyachtsales.com/en/

Telephones

USA: +1(954)274-4435

Office hours

Monday – Saturday: **9:00 - 21:00** EDT

Sunday: **closed**

Address



Harbour Towne Marina, 850 NE 3rd St,
STE 213, Dania, FL 33004