

VAGRANT II — LIEN HWA



Builder: LIEN HWA

Year Built: 2003

Price: PRICE ON APPLICATION

Location: United States

LOA: 45' 0" (13.72m)

Beam: 12' 9" (3.86m)

Min Draft: 5' 6" (1.68m)

Cruise Speed: 7 Kts. (8 MPH)

Our experienced yacht broker, Andrey Shestakov, will help you choose and buy a yacht that best suits your needs **VAGRANT II — LIEN HWA** from our catalogue. Presently, at Shestakov Yacht Sales Inc., we have a wide variety of yachts available on our sale's list. We also work in close contact with all the big yacht manufacturers from all over the world.

If you would like to buy a yacht **VAGRANT II — LIEN HWA** or would like help answering any questions concerning purchasing, selling or chartering a yacht, please call **+1(954)274-4435**

TABLE OF CONTENTS

TABLE OF CONTENTS	2
SPECIFICATIONS	3
Overview	3
Basic Information	3
Dimensions	3
Speed, Capacities and Weight	4
Hull and Deck Information	4
Engine Information	4
DETAILED INFORMATION	5
Exclusions	6
Disclaimer	6
PHOTOS	7
CONTACTS	12
Contact details	12
Telephones	12
Office hours	12
Address	12

SPECIFICATIONS

Overview

Vagrant II an Edward Monk designed motorsailer, a classic one owner boat custom built yacht by the Lien Hwa ship yard. This beautiful appointed enclosed pilot house design has been painstakingly maintained by her owners & marina. Can be sailed or motored at 6 to 7 knots @ 2200 RPM's consuming 7/8 gal. of diesel under average sea conditions. 350 - 400 NM range under sail & power. Moored in fresh water but has sailed the east coast of the US she is ready for new owners who wish to cruise in classic style and comfort under sail or power with the Yanmar 100 HP turbo charge diesel that just sips fuel. The quality workmanship by the Lien Hwa craftsman have built a vessel utilizing today's technology with traditional methods producing a superb handling yacht.

Amenities include washer/dryer, TV in the Master Stateroom, fully air conditioned, two station hydraulic steering includes joy stick control. A great live aboard vessel includes a dinghy, Mercury outboard and charts for the East Coast.

Basic Information

Model Year: 2003

Year Built: 2003

Country: United States

Dimensions

LOA: 45' 0" (13.72m)

Beam: 12' 9" (3.86m)

Min Draft: 5' 6" (1.68m)

Clearance: 54' 0" (16.46m)

MFG Length: 45' 0" (13.72m)

Speed, Capacities and Weight

Cruise Speed: 7 Kts. (8 MPH)

Displacement: 24000 Pounds

Gross Tonnage: 12 Pounds

Water Capacity: 133 Gallons

Holding Tank: 10 Gallons

Hull and Deck Information

Hull Material: Fiberglass

Engine Information

Engines: 1

Manufacturer: Yanmar

Model: 4JH2

Engine Type: Inboard

Fuel Type: Diesel

DETAILED INFORMATION

Descriptions

Sail Equipment:

Sails: Main - Top Reef 2000

- Mizzen & Genoa
- Winches 1 Anderson on Mizzen, 2 Anderson on Main single speed
- 1 Lewmar #40 on deck house, 1 Lewmar #44 for anchor
- Blocks either Schaefer or Lewmar
- Traveler: Lewmar (bronze)

Engine: Yanmar 4 JH2 UTE 100 HP turbo charged Diesel

- Fuel capacity 147 gallons

Anchors: Bruce 20 KG with 50' 3/8 BB chain & 150' 3 strand nylon

- CQR 45# T316 Stainless Steel with 150' 3/8 BB Chain & 150' 3 strand nylon

Bow Thruster: Wesmar T8E D12 (12 volt)

Air Conditioners: 3 Alcuise Air H5-7 & H5-12

Electronics: DLX10 Garmin Radar, GPS 301 DC & VHF Marine Radio

Galley Equipment: Force 10 Propane Stove (2 burner, oven & broiler)

- Toshiba Refrigerator GR-K 15T 120 volt
- Newline Ice Maker WH 9522 (110 volt)
- LG Microwave
- Combomatic 600 Washer/Dryer

Tender: Zodiac Inflatable Model 260 w/ 3.3 HP mercury outboard

Disclaimer

The Company offers the details of this vessel in good faith but cannot guarantee or warrant the accuracy of this information nor warrant the condition of the vessel. A buyer should instruct his agents, or his surveyors, to investigate such details as the buyer desires validated. This vessel is offered subject to prior sale, price change, or withdrawal without notice.

Exclusions

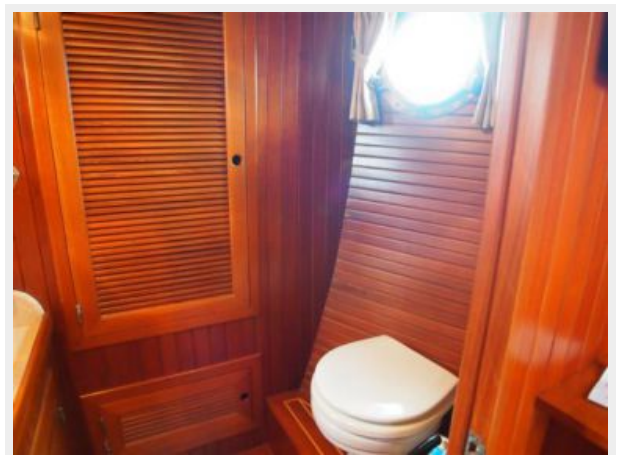
Owner's personal belongings.

Disclaimer

The Company offers the details of this vessel or yacht in good faith but cannot guarantee or warrant the accuracy of this information nor warrant the condition of the vessel. A buyer should instruct his representatives, agents, or his surveyors, to investigate such details as the buyer desires validated. This vessel or yacht is offered subject to prior sale, price change, or withdrawal without notice.

PHOTOS











CONTACTS

Andrey Shestakov, leading yacht broker of the sales department of Shestakov Yacht Sales Inc. Shestakov Yacht Sales Inc., the official representative of the Miami/Fort Lauderdale FL headquarters.

Contact details

Email: andrey@shestakovyachtsales.com

Web: shestakovyachtsales.com/en/

Telephones

USA: +1(954)274-4435

Office hours

Monday – Saturday: **9:00 - 21:00** EDT

Sunday: **closed**

Address



Harbour Towne Marina, 850 NE 3rd St,
STE 213, Dania, FL 33004