

CURRAGHALLA — CATALINA



Builder: CATALINA

Year Built: 1992

Price: PRICE ON APPLICATION

Location: United States

LOA: 34' 6" (10.52m)

Beam: 11' 9" (3.58m)

Min Draft: 4' 3" (1.30m)

Our experienced yacht broker, Andrey Shestakov, will help you choose and buy a yacht that best suits your needs **Curraghalla — CATALINA** from our catalogue. Presently, at Shestakov Yacht Sales Inc., we have a wide variety of yachts available on our sale's list. We also work in close contact with all the big yacht manufacturers from all over the world.

If you would like to buy a yacht **Curraghalla — CATALINA** or would like help answering any questions concerning purchasing, selling or chartering a yacht, please call **+1(954)274-4435**

TABLE OF CONTENTS

TABLE OF CONTENTS	2
SPECIFICATIONS	3
Overview	3
Basic Information	3
Dimensions	3
Speed, Capacities and Weight	3
Accommodations	3
Hull and Deck Information	3
Engine Information	4
DETAILED INFORMATION	5
Exclusions	7
Disclaimer	7
PHOTOS	8
CONTACTS	11
Contact details	11
Telephones	11
Office hours	11
Address	11

SPECIFICATIONS

Overview

A well cared for example of the popular 34 Mk II, a fast and comfortable cruiser with ample interior space. The second owner is ready for retirement and would like the boat sold. Come and see her and make an offer!

Basic Information

Model Year: 1992

Year Built: 1992

Country: United States

Dimensions

LOA: 34' 6" (10.52m)

LWL: 29' 10" (9.09m)

Beam: 11' 9" (3.58m)

Min Draft: 4' 3" (1.30m)

Clearance: 49' 9" (15.16m)

MFG Length: 34' 0" (10.36m)

Speed, Capacities and Weight

Displacement: 12550 Pounds

Water Capacity: 72 Gallons

Holding Tank: 25 Gallons

Fuel Capacity: 25 Gallons

Accommodations

Total Heads: 1

Hull and Deck Information

Hull Material: Fiberglass

Engine Information

Engines: 1

Manufacturer: Universal

Model: M35

Engine Type: Inboard

Fuel Type: Diesel

DETAILED INFORMATION

Full Specifications

Accommodations

- V berth with lockers & drawers
- Main cabin with bulkhead dining table, settees which convert to a single to port and a double starboard
- Navigation desk to port
- Galley to starboard
- Head & shower to port
- Enclosed aft cabin to starboard with large double berth and lockers

Galley and Head

- Hillerange 2 burner gimbaled propane stove with oven
- Double stainless steel sinks
- Hot & cold pressure water
- Adler Barbour 12v refrigeration
- Extensive storage in drawers and lockers
- Jabsco manual pump head
- Vanity sink
- Shower seat with sump

Electronics & Navigation

- Panasonic VHF radio
- B&G speed / distance with water temp
- B&G depth sounder
- B&G Wind speed / direction
- B&G repeater for all functions at the navigation station
- Garmin 12xL GPS with interface
- Raytheon 10XX Radar with interface
- Raymarine ST 4000+ Autopilot
- Pioneer DEH-520 AM/FM/CD stereo
- Ritchie Powerdamp Binnacle Compass

Electrical

- 12vdc and 120vac Breaker Panels
- Three 12v Batteries
- Selector Switch
- Analog voltmeter
- Analog ampmeter

- Guest two bank battery charger
- Shore power and 50' cord

Sails & Rigging

- Tall Rig Keel Stepped Mast
- Furlex Roller Furling
- Genoa 135%, 2003
- Genoa 150%
- Mainsail, 2014
- Cruising Asymmetrical Spinnaker
- Mainsheet Traveler
- Boom Vang
- Lewmar ST46 primaries
- Lewmar 30 and ST30 cabin top

Deck & Hull

- CQR 35 with 40 feet of 3/16 chain and 320 feet 3/4 inch rode
- Danforth 22 with 18' chain 180' rode
- Bow roller

- Edson wheel with custom teak table
- Three overhead hatches
- Eight opening ports
- Complete screens
- Solar vent
- Two Dorade Vents
- Bow & stern pulpits
- Double life lines with side gates
- Stern ladder
- Cockpit hot & cold shower
- Navy Blue Canvas; Dodger, Sailcover, Wheel cover, Winch covers
- Cockpit cushions
- Edson Dinghy Davits

DisclaimerThe Company offers the details of this vessel in good faith but cannot guarantee or warrant the accuracy of this information nor warrant the condition of the vessel. A buyer should instruct his agents, or his surveyors, to investigate such details as the buyer desires validated. This vessel is offered subject to prior sale, price change, or withdrawal without notice.

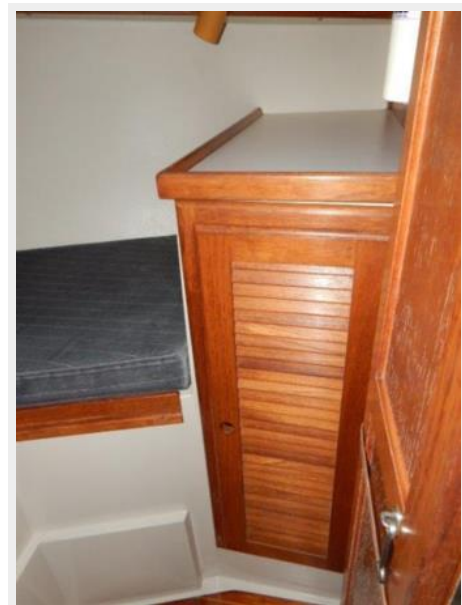
Exclusions

Owner's personal belongings.

Disclaimer

The Company offers the details of this vessel or yacht in good faith but cannot guarantee or warrant the accuracy of this information nor warrant the condition of the vessel. A buyer should instruct his representatives, agents, or his surveyors, to investigate such details as the buyer desires validated. This vessel or yacht is offered subject to prior sale, price change, or withdrawal without notice.

PHOTOS







CONTACTS

Andrey Shestakov, leading yacht broker of the sales department of Shestakov Yacht Sales Inc. Shestakov Yacht Sales Inc., the official representative of the Miami/Fort Lauderdale FL headquarters.

Contact details

Email: andrey@shestakovyachtsales.com

Web: shestakovyachtsales.com/en/

Telephones

USA: +1(954)274-4435

Office hours

Monday – Saturday: **9:00 - 21:00** EDT

Sunday: **closed**

Address



Harbour Towne Marina, 850 NE 3rd St,
STE 213, Dania, FL 33004