

SEAFARER — SILVERTON



Builder: SILVERTON

Year Built: 1987

Price: PRICE ON APPLICATION

Location: United States

LOA: 40' 0" (12.19m)

Beam: 14' 0" (4.27m)

Max Draft: 3' 0" (0.91m)

Cruise Speed: 17 Kts. (20 MPH)

Max Speed: 23 Kts. (26 MPH)

Our experienced yacht broker, Andrey Shestakov, will help you choose and buy a yacht that best suits your needs **SEAFARER — SILVERTON** from our catalogue. Presently, at Shestakov Yacht Sales Inc., we have a wide variety of yachts available on our sale's list. We also work in close contact with all the big yacht manufacturers from all over the world.

If you would like to buy a yacht **SEAFARER — SILVERTON** or would like help answering any questions concerning purchasing, selling or chartering a yacht, please call **+1(954)274-4435**

TABLE OF CONTENTS

TABLE OF CONTENTS	2
SPECIFICATIONS	3
Overview	3
Basic Information	3
Dimensions	3
Speed, Capacities and Weight	3
Accommodations	4
Hull and Deck Information	4
Engine Information	4
DETAILED INFORMATION	5
Exclusions	8
Disclaimer	8
PHOTOS	9
CONTACTS	14
Contact details	14
Telephones	14
Office hours	14
Address	14

SPECIFICATIONS

Overview

This 2 stateroom 2 head aft cabin layout was very popular for Silverton Marine. For extended cruising or live aboard all the amenities are there, heat & air conditioning, generator, entertainment center etc. Upgrades include new port engine, new generator, solar panels and new reverse cycle heat and air conditioning just to highlight the list. Seller is motivated pursuing other interests. All reasonable offers will be considered. If your looking for a family cruiser or a live aboard this boat is a must see. In the water and truly turn key.

Basic Information

Model Year: 1987

Year Built: 1987

Country: United States

Dimensions

LOA: 40' 0" (12.19m)

Beam: 14' 0" (4.27m)

Max Draft: 3' 0" (0.91m)

Clearance: 13' 6" (4.11m)

MFG Length: 40' 0" (12.19m)

Speed, Capacities and Weight

Cruise Speed: 17 Kts. (20 MPH)

Max Speed: 23 Kts. (26 MPH)

Displacement: 24000 Pounds

Water Capacity: 100 Gallons

Holding Tank: 35 Gallons

Fuel Capacity: 300 Gallons

Accommodations

Total Cabins: 3

Total Berths: 4

Total Heads: 2

Hull and Deck Information

Hull Material: Fiberglass

Engine Information

Engines: 2

Manufacturer: Crusader

Model: 454

Engine Type: Inboard

Fuel Type: Gas

DETAILED INFORMATION

Accommodations

Forward you have the guest stateroom with the V-berth arrangement and a filler cushion. A large hatch and opening ports allow for excellent ventilation. The guest head with separate stall shower is to port with a large hanging locker to starboard. Ample drawer and cabinet storage plus storage underneath. Aft to port is the spacious galley area with ample counter, cabinet and drawer space. Aft to starboard is the convertible dinette. Up a couple of steps to the salon area with an L-shaped settee to port and a barrel chair to starboard, plus the entertainment center. Down a couple of steps to the master stateroom with a centerline queen bed, end table to port and a vanity to starboard. The master head is to starboard and also features a separate stall shower. Ample drawer, locker and cabinet space through out. From the salon you access the aft deck and the flybridge area.

Galley

Hot & Cold Pressure Water System

Princess Electric Stove 3 Burners with Oven

Norcold AC/DC Full Size Refrigerator with Freezer- New 2015

LG Microwave Oven

Stainless Steel Sink

Teak & HollySole

Dockside Water Inlet

Electric Hot Water Heater- New 2018

Raritan Ice Maker in the Salon

Electronics

Furuno Radar- Model 1715

Raymarine Digital Depth with Alarm

Icom VHF Radio M-302

Garmin GPS Map- 182C

Sentry 415 Gas Fume Detector

Ritchie Compass

Hailer

Remote Control Spot Light

Engine synchronizer

Deck & Hull

Bottom Barrier Coated- New 2015

Bimini Top for Aft Deck and Full 4 sided Enclosure- New 2018

New Companionway Door

3- New Solar Panels to Charge Batteries- 80 Watts Each- New 2018

30 Amp Regulator for Solar Panels- New 2018

Overhead Hatch with Screens over Dinette Area- All Hatch Hardware Replaced New- 2016

Full Four Sided Enclosure on Flybridge- New Bimini Top- 2018

Swim Platform with Stainless Steel Ladder

Aluminum Radar Arch

Bridge Seating for 5

3- Helm Seats on Flybridge

Ideal Windless Controlled from the Bow or the Flybridge

Bruce Anchor with 200 of chain

3- Ventilation Hatches

Opening Ports

Dual Trumpet Air Horns- New 2018

Bow Pulpit with Rail

Front Windshield Cover- New 2017

Salt Water Wash Down

Igloo Marine Cooler with Cushion

Stainless Steel Fender Racks

Magma Propane Grill

60 qt. Outer Banks Cooler

Coast Guard Package- Life Jackets, Dock Lines & Fenders

Electrical

110/ 12V Electrical System

Kohler 7.5 KW Generator with Remote Start/ Stop Switch- New 2018

2- 30 AMP Inlets with Dockside Power Cables

50 AMP Splitter

3000 Watt Inverter (Xantrex)

2- 8D Batteries

40 AMP Automatic Battery Charger

AC/DC Distribution Panel with Circuit Breaker Protection

12-Volt plug

Mechanical

Port Engine New 2018- 10 Hours

Risors & Manifolds on Starboard Engine- New 2018

Complete Tune Up on Starboard Engine Including Raw Water Pump

Reverse Cycle Heat & Air Conditioning- New 2017

Anchor Windlass with Anchor, Chain & Rode

Boat Leveler Hydraulic Trim Tabs

2-Automatic Bilge Pumps

Engine Room Blowers

Full Instrumentation

Props Reconditioned- 2013Cutlass Bearings- New 2013

Disclaimer

The Company offers the details of this vessel in good faith but cannot guarantee or warrant the accuracy of this information nor warrant the condition of the vessel. A buyer should instruct his agents, or his surveyors, to investigate such details as the buyer desires validated. This vessel is offered subject to prior sale, price change, or withdrawal without notice.

Exclusions

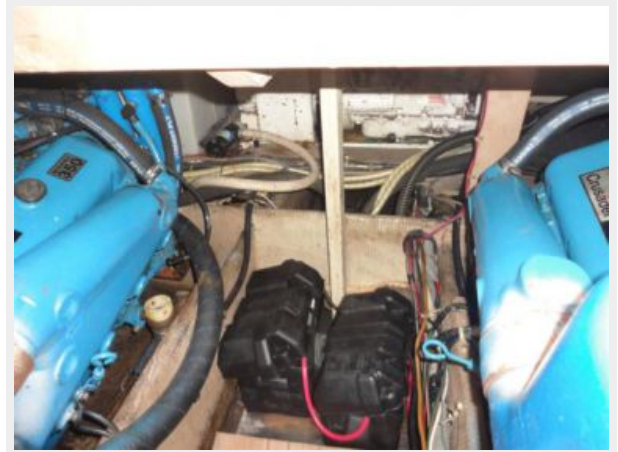
Owner's personal belongings.

Disclaimer

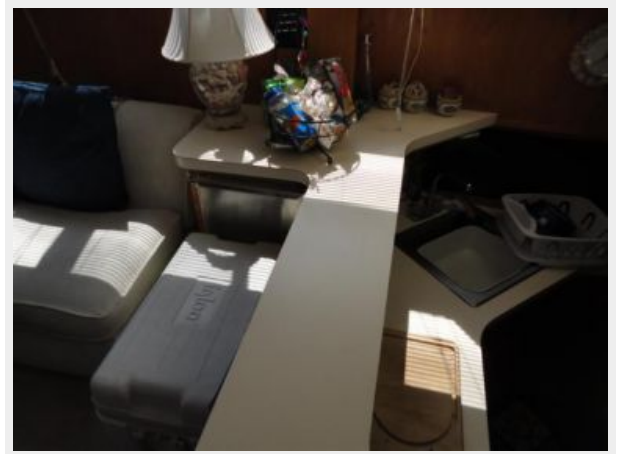
The Company offers the details of this vessel or yacht in good faith but cannot guarantee or warrant the accuracy of this information nor warrant the condition of the vessel. A buyer should instruct his representatives, agents, or his surveyors, to investigate such details as the buyer desires validated. This vessel or yacht is offered subject to prior sale, price change, or withdrawal without notice.

PHOTOS











CONTACTS

Andrey Shestakov, leading yacht broker of the sales department of Shestakov Yacht Sales Inc. Shestakov Yacht Sales Inc., the official representative of the Miami/Fort Lauderdale FL headquarters.

Contact details

Email: andrey@shestakovyachtsales.com

Web: shestakovyachtsales.com/en/

Telephones

USA: +1(954)274-4435

Office hours

Monday – Saturday: **9:00 - 21:00** EDT

Sunday: **closed**

Address



Harbour Towne Marina, 850 NE 3rd St,
STE 213, Dania, FL 33004