

SAQUISH — BRISTOL YACHTS



Судостроитель: BRISTOL YACHTS

Год постройки: 1984

Цена: **ЦЕНА ЯХТЫ ПО ЗАПРОСУ**

Местонахождение: United States

Длина общая: 31' 3" (9.50m)

Ширина: 10' 3" (3.10m)

Макс. осадка: 5' 3" (1.60m)

Купить **SAQUISH — BRISTOL YACHTS** а также выбрать подходящую вам яхту из нашего каталога яхт вам поможет опытный яхтенный брокер Андрей Шестаков. На сегодняшний день компания Shestakov Yacht Sales Inc. имеет большое количество яхт в собственном списке продаж, а также тесно сотрудничает со всеми крупными яхтенными производителями по всему миру.

Для того чтобы купить яхту **SAQUISH — BRISTOL YACHTS** а также проконсультироваться по любому вопросу связанному с покупкой, продажей, чартером яхт позвоните по телефону **+7(918)465-66-44**.

ОГЛАВЛЕНИЕ

ОГЛАВЛЕНИЕ	2
ХАРАКТЕРИСТИКИ	5
Обзор	5
Основная информация	5
Размеры	5
Скорость, вместимость и масса	6
Размещение	6
Корпус и палуба	6
Информация о двигателе	6
ПОДРОБНОЕ ОПИСАНИЕ	7
Исключения	13
Отказ от ответственности	13
ФОТОГРАФИИ	15
Late Fall, 2018	15
Deck, starboard forward	16
Deck, port forward	16
Foredeck detail	16
Deck, aft	16
Deck aft, port	16
Deck aft, starboard	16
Cockpit & Helm Station	17
Cockpit & Helm Station	17
Helm Station detail	17
Helm Station, aft	17
Companionway electronics console	17
Cockpit, starboard forward	17
Cockpit, starboard side	18
Transom detail	18

Cockpit, port side aft detail	18
Companionway custom radar bracket	18
Salon	18
Salon, port forward	18
Salon, port side detail	19
Salon, Port side settee	19
Salon, starboard forward	19
Salon, starboard side settee	19
Nav Station	19
Nav Station	19
Companionway	20
Galley	20
Fore Cabin berth	20
Fore Cabin forepeak access	20
Fore Cabin berth, starboard side aft	21
Fore Cabin berth, starboard side	21
Fore Cabin berth, port side aft	21
Head from Fore Cabin	21
Head from Salon	22
Salon sole	22
Cabin Sole detail	22
New water tank	22
Bristol 31.1 Sailplan	23
Bristol 31.1 Profile & Layout	23
КОНТАКТЫ	24
Контактная информация	24
Телефоны	24
Время работы	24
Адрес	24

ХАРАКТЕРИСТИКИ

Обзор

The SAQUISH is an excellent example of the BRISTOL 31.1 as designed by Dieter Empacher of the Hood Design Group. She was built as a 1984 model with the standard keel configuration with the nominal 5'3" draft that same year. First introduced in 1983, the "31.1" was produced until the late 1980's. She earned the deserved excellent reputation by having both the attributes of exceptional quality and very good performance compared to most of her peers available in the marketplace.

The SAQUISH has clearly benefited from the past (15) years of management by her present Owners. A good read of the Listing will indicate a diligent process of maintenance & upgrades over the years that is so crucial to the success of the better yachts such as this BRISTOL 31.1 when it comes to the "resale time"!

As the time available for the use of the SAQUISH has become progressively more limited over the past few years, her Owners had decided to present her for brokerage sale. She's one of the "better" offerings that anyone is going to find if clients aspire to the likes of the BRISTOL 31.1. Accordingly, appointments for viewings are encouraged if this is indeed the case!

Основная информация

Модельный год: 1984

Год постройки: 1984

Страна: United States

Размеры

Длина общая: 31' 3" (9.50m)

Длина по ватерлинии: 24' 9" (7.54m)

Ширина: 10' 3" (3.10m)

Макс. осадка: 5' 3" (1.60m)

Трапы: 47' 0" (14.33m)

Длина привального бруса: 31' 0" (9.45m)

Скорость, вместимость и масса

Водоизмещение: 11200 Pounds

Вместимость воды: 65 Gallons

Объем топливного бака: 18 Gallons

Размещение

Всего кают: 1

Всего коек: 3

Всего ком. состава: 1

Корпус и палуба

Материал корпуса: Fiberglass

Отделка корпуса: Stainless Steel

Информация о двигателе

Двигатели: 1

Производитель: Universal

Модель: M-18

Тип двигателя: Inboard

Тип топлива: Diesel

ПОДРОБНОЕ ОПИСАНИЕ

Hull & Deck

The SAQUISH was built with the standard BRISTOL YACHTS hand layup fiberglass hull. The ballast is internal lead and encapsulated.

Hull

- White Gelcoat topsides finish
- Optional BRISTOL teak rubrail w/ stainless steel striker plates
- Cove Stripe & Boot-Top; painted w/ INTERLUX Flag Marine Blue
- Bottom paint, Red INTERLUX Micron 66 (ablative)
- INTERPROTECT Barrier Coat (2000)
- Skeg rudder (*note: w/ bronze stock & mounted on a bronze rudder shoe*)
- Standard draft keel model: 5'3"

Deck

The SAQUISH has the optional signature BRISTOL "higher flared teak toe rails". All the exterior wood, to include the toe rails, cockpit coaming caps, eyebrow trim for the coachroof, companionway boards & other external wood trim, is all regularly nicely-finished with CETOL.

The ports, portlights & hatches all have had their LEXAN replaced (2018)

- Two-tone White Gelcoat finish w/ contrasting Beige non-skid gelcoat
- Stemhead fitting, custom stainless steel, w/ sail tack, (2) rode chocks & (1) anchor roller
- Optional BRISTOL higher flared 4" teak toe rails (*note: stainless steel chocks are integrated into the custom Factory option rail*)
- (4) Chocks, custom stainless steel, (2) amidships & (2) stern
- Bow pulpit, double-rail, stainless steel
- Stern rail, double-rail, stainless steel w/ gate
- Swim ladder, folding, stainless steel w/ teak steps (*note: mounted on Transom*)
- Upper & lower lifelines w/ (2) gates, port & starboard (*note: 2013, lifelines replaced by HATHAWAY, REISER & RAYMOND*)
- (6) Cleats, 8" mooring, aluminum
- (2) Dorade vents, fiberglass boxes w/ chromed cowl ventilators
- (6) BOMAR cast aluminum ports, silver, opening w/ screens
- (2) BOMAR cast aluminum portlights, fixed
- (2) BOMAR hatches, deck; (1) medium Fore Cabin & (1) small for Salon
- Sea Hood, fiberglass for sliding Companionway hatch
- Genoa tracks, inboard & outboard (*note: inboard tracks rebedded, 2003*)
- EDSON wheel steering w/ pedestal, binnacle guard, wheel brake (*note: pads new, 2015*)
- (2) Cockpit storage lockers; port, starboard

- (2) Cockpit storage areas

Accommodations

The SAQUISH features a newer teak & holly Cabin Sole that was installed in 2010. As the fresh water tank had to be removed & replaced .. and that work sacrificed the original sole .. the replacement sole is first-rate in keeping with the quality of BRISTOL YACHTS "as built". A Master Ship's Carpenter did the "stick-built" work, i.e., individual pieces of teak and holly wood that were hand-laid onto a marine plywood base. As with the original, this can be sanded over time for refinish or repairs as it does not have the usual "teak veneer" finish so common today.

This BRISTOL 31.1 has the standard layout arrangement with a V-Berth forward that has a small hanging locker, (3) drawers, storage over the berth, port & starboard, with Rattan center doors for proper ventilation. There are (2) opening ports and an overhead hatch. The Head is forward to port with (2) doors; one to the Fore Cabin and one to the passage from the Salon. There is one opening port, hot & cold pressure water and shower service and a Marine toilet plumbed to the holding tank with a "Y" valve. Opposite is storage with a hanging locker and (3) drawers. The Salon has a bulkhead-mounted teak table and a FORCE 10 LPG Cabin heater. There are opposing settee / berths with storage under & over. The port side settee converts to a double berth. The Galley is aft to starboard and with an icebox. The sit-down Nav Station has a table and is aft to port.

- Teak & holly Cabin Sole (*new, 2010*)
- Teak interior joinery, varnished (*note: most of the trim pieces are "gloss" and the balance is a satin finish*)
- Bulkhead table, teak, varnished, folding w/ drop leaf
- Interior upholstery, Blue Corduroy fabric
- V-Berth cushions, (1) filler section & (2) "side" sections
- Book cases in Salon, port & starboard

Galley

The SAQUISH had her propane lines, regulator & electric shut-off solenoid all replaced in 2014. A 10# aluminum propane tank was added in 2014.

- SHIPMATE propane stove w/ oven, (2) burner, gimbaled, stainless steel
- Propane tank, 10# (*2014*)
- Sink, single stainless steel
- Hot & cold pressure water service

Maintenance & Improvements

- Foot-pump for fresh water, manual back-up (*replaced, 2008*)

- Galley sink hoses (*new, 2010*)
- Check valve for Galley drain hose (*2016*)

Head

- RARITAN PHII Marine Head w/ "Y" valve for Holding Tank or overboard discharge (*note: Head new, 2003*)
- Holding Tank w/ deck discharge access plate
- Pressure hot & cold water service
- Hand-held shower

Maintenance & Improvements

- All Head "in/out" hoses replaced (*2003*)
- New thru-hull for Head discharge hose (*2006*)
- New shower hot water hose & shower head (*2008*)
- New Head sink drain hose (*2010*)

Electronics

Communication

- ICOM IC-502 VHF w/ remote Command Cockpit Mic (*all 2003*)

Navigation

- FURUNO GP32 Navigator GPS (*note: new 2010, installed at Nav Station w/ externa antenna*)
- FURUNO GPS Sensor w/ Radar input
- RAYMARINE 1715 Radar (*note: new 2010, installed at Nav Station w/ custom swing-out display mount for Cockpit viewing*)
- SCANSTRUT Self-leveling radome mount (*note: new May 2010, mounted on backstay*)
- RAYMARINE i50 Depth (*note: new 2018, mounted in Console at Companionway*)
- RITCHIE Globemaster Compass w/ stainless steel housing (*new, 2006*)

Performance

- RAYMARINE i50 Speed (*note: new 2018, mounted in Console at Companionway*)

Autopilot

- RAYMARINE SPX-5 SmartPilot (*note: new 2011, wheel-mount w/ external drive, control unit in Cockpit, port side aft*)

Rig, Rigging, Winches & Sails

Rig

The SAQUISH has the standard silver-anodized aluminum mast & boom. The masthead rig has a single set of tapered spreaders and with main & forward & aft-mounted lower shrouds. The halyards are internal. The mast is keel-steeped with a stainless steel step plate.

The mast has been removed at regular intervals (average every 2-3 years) over the past (15) years for spar & rigging inspections and service as necessary.

Dimensions: I=40.75', J=13.58', P=34.83' & E=10.5'

Rigging

- Standing rigging, 1x19 stainless steel wire
- HARKEN Mark IV Roller-furling (*new, 2003*)
- Inner-forestay w/ deck fitting, folding stainless steel (*new, 2016*)
- Boom vang, block & tackle (*2003*)
- Running rigging, NEW ENGLAND ROPES: main & genoa halyards (*T900, 2013*), reefing lines (*Sta-Set, 2010*), jib / genoa sheets (*Sta-Set, 2003*) & mainsheet (*Regatta Braid, 2016*)
- Halyards & lines: main, genoa & spinnaker halyards, boom topping lift
- Flag halyards (*note: to spreaders*)
- FORESPAR Whisker Pole, 20' extendable (*note: mounted on port side w/ brackets to stanchions*)

Winches (LEWMAR)

- (2) L42C ST (2) speed self-tailing Primary / Genoa
- (1) L16C single-speed Genoa halyard (*note: mounted on mast*)
- (1) L8C single-speed Main halyard (*note: mounted on mast*)
- (3) Winch handles, chrome

Sails (QUANTUM & U-K SAILS)

Sail Area (100% Main & Foretriangle): total SA = 474 sq/ft w/ Mainsail (198 sq/ft) & Jib (276 sq/ft)

- Mainsail, Dacron w/ (3) sets slab / jiffy reef points (*new, 2003*)
- Sailcover, Light Tan SUNBRELLA by HATHAWAY, REISER & RAYMOND (*2004*)
- Genoa, 135%, roller-furling, Dacron w/ UV Tabling Cover (*new, 2003*)
- Jib, 95%, roller-furling Dacron (*new, 2013*)
- Storm Jib, Cross-Cut, Dacron (*new, 2016 & Owner-reported "used only (2) times"*)
- U-K Flasher / Asymmetrical Spinnaker (*note: probably 1984*)

Electrical

The SAQUISH has both a 12 VDC Ship's Service / Utility and 110 VAC Shore Power Systems. *As she has been located at mooring for the Seasonal use for the past (16) years, the Owner did not have a battery charger installed after purchase in 2003.*

- (3) Batteries, 12 VDC, WEST MARINE Group 24: (2) House / Utility (2015) & (1) Engine Start (2017)
- Upgraded engine alternator (*new 2012, see "Propulsion"*)
- Battery Parallel Switch
- Electrical Panel w/ (16) breakers
- Solar Panel, thin-film rollable for trickle-charging
- (2) 12 VDC Outlets in Salon
- Shore Power System, 30 AH w/ 50' cord
- Polarity Indicator, audible
- Electrical Panel w/ (4) breakers
- GFI 110VAC internal outlets

Lighting, Interior

- Reading lights throughout
- Overhead dome lights throughout
- Nav light, red "goose neck flex" at Nav Station

Lighting, Exterior

The mast was completely rewired in 2015.

- Nav lights, HELLA; port, starboard & aft (*replaced, 2008*)
- Mast / Nav lights; steaming light replaced & masthead light replaced w/ Tri-color Nav LED TRIO w/ anchor light (*note: all 2015*)

Systems

Plumbing

The Main / Primary fresh-water tank was replaced in 2010. It was fabricated out of stainless steel by the original OEM provider, LUTHER'S of RI,

- Fresh-water capacity: 65 US Gallons in (2) stainless steel tanks (*note: main located under Salon sole & secondary under Fore Cabin sole*)
- Pressure hot & cold water service w/ service to the Galley & Head (*note: new water pump, 2015*)
- RARITAN hot water heater, (6) US Gallons (*new, 2003*)
- Bronze seacocks throughout

Pumps, Bilge & Sump

- (1) Bilge pump, (1) RULE 12 VDC electric / automatic (*new, 2017*)
- (1) Bilge pump, EDSON Whale manual (*note: new, 2012, installed in Cockpit, port side aft*)
- Check valves for bilge pump hoses (*2016*)
- (1) Shower sump pump, 12 VDC

Propulsion

This BRISTOL 31.1 is powered by the standard UNIVERSAL Model 18 (2) cylinder marine diesel rated at 14 HP. She's fresh-water cooled. *The engine hours are noted to be "approximate" at the hour meter is not working.* Based on the Owner's usage over the past (16) years, the total logged hours are estimated to be some 1,750 or so overall.

- HURTH transmission w/ 2:1 reduction
- Fuel tank, (18) US Gallons, aluminum
- RACOR 24 primary fuel filter w/ clear inspection bowl & flame shield
- (3) Blade propeller, bronze
- Shaft, 1" bronze
- Spare electric fuel pump in inventory (*purchased, September, 2018*)

The SAQUISH has had the following maintenance or upgrade items accomplished, 2018-2019:

- UNIVERSAL Admiral Control Panel (*May, 2018*)
- Replacement engine wire harness (*May, 2018*)
- New starter motor & solenoid (*August, 2018*)
- Alternator, 55 AH (*note: standard OEM model from UNIVERSAL / WESTERBEKE, new, Spring 2019*)
- Fuel injectors (*new, Spring 2019*)
- Electronic fuel injection pump (*new, Spring 2019*)

The SAQUISH maintenance records include the following work:

- HURTH transmission, bell housing & motor mounts (*note: all new, 2003*)
- Engine exhaust elbow (*2015*)
- Throttle cable (*2010*)

Additional Inventory

Ground Tackle

- CQR Plow anchor, 25# w/ chain & 300' (*approx*) rode (*note: anchor hawse pipe, stainless steel, on Foredeck*)
- FORTRESS 27" Storm Anchor w/ 200' (3) strand nylon rode
- Bow anchor roller

Canvas (Light Tan SUNBRELLA)

- Dodger, HATHAWAY, REISER & RAYMOND (*new, 2004 w/ restitch 2015 & new EISENGLASS 2015 / 2018*)
- Bimini / Awning, custom
- Companionway boards storage bag, (4) slots

Safety

- USCG Gear (include PFD's, no flares)
- Fire extinguishers
- Towing line, 200' (3) strand
- Radar Reflector, folding, aluminum
- Emergency tiller, galvanized steel
- Horseshoe Life-Ring, throwable
- LIFESLING2 Man Overboard Rescue System

Misc

- FAIRCLOUGH Winter cover (*new, 2013*) & frame (*original*), canvas
- FORCE 10 Cabin Heater, propane, stainless steel (*note: installed on Salon bulkhead, port side forward w/ the "Charley Noble" stack on deck adjacent to the mast*)
- Cockpit table, custom teak, folding
- Cockpit cushions, BOTTOMSIDERS Closed-Cell foam w/ Steering Hump for Helm Station
- Dock lines
- (4) Fenders, TAYLOR
- Flagstaff w/ Ensign, teak
- (3) Drink holders, plastic

Disclaimer The Company offers the details of this vessel in good faith but cannot guarantee or warrant the accuracy of this information nor warrant the condition of the vessel. A buyer should instruct his agents, or his surveyors, to investigate such details as the buyer desires validated. This vessel is offered subject to prior sale, price change, or withdrawal without notice.

Исключения

При продаже яхты исключаются личные вещи владельца.

Отказ от ответственности

Компания предоставляет описание судна или яхты добросовестно, но не может гарантировать точность этой информации, а также не ручается за техническое состояние. Покупатель должен проинструктировать своих агентов или оценщиков

исследовать представленную информацию более подробно, по собственному желанию. Продажа судна или яхты, изменение цены или снятие с продажи будет происходить без предварительного уведомления.

ФОТОГРАФИИ



Late Fall, 2018



Deck, starboard forward



Deck, port forward



Foredeck detail



Deck, aft



Deck aft, port



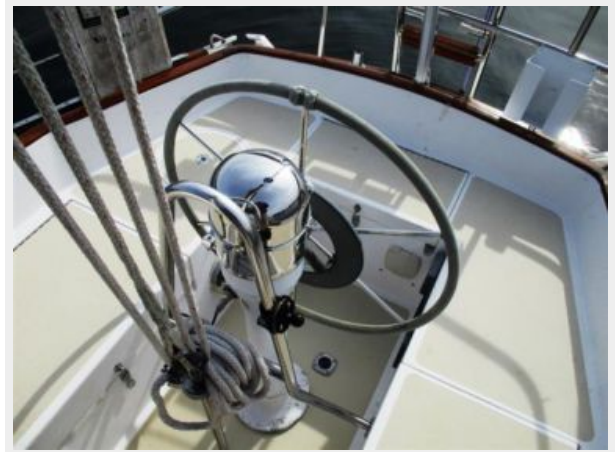
Deck aft, starboard



Cockpit & Helm Station



Cockpit & Helm Station



Helm Station detail



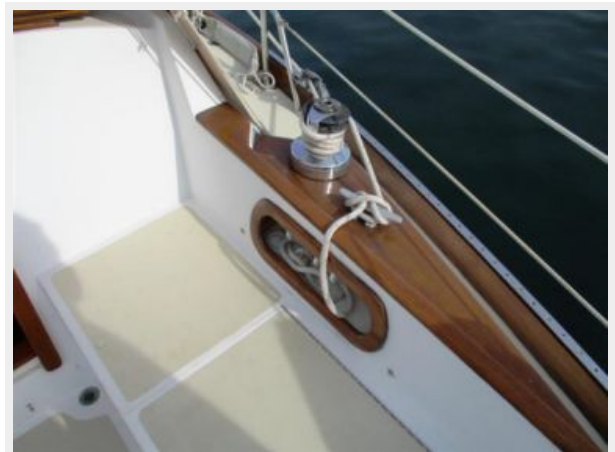
Helm Station, aft



Companionway electronics console



Cockpit, starboard forward



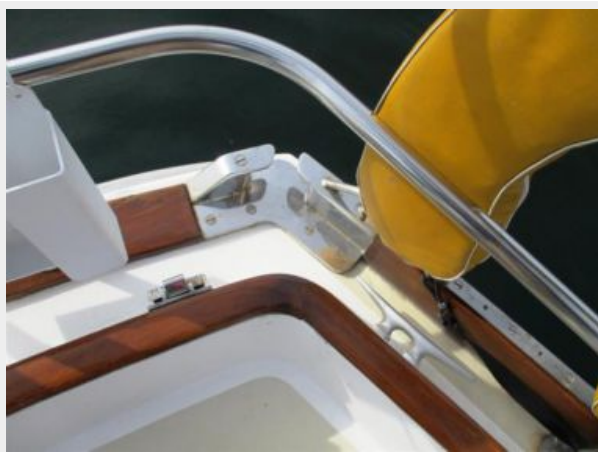
Cockpit, starboard side



Transom detail



Cockpit, port side aft detail



Companionway custom radar bracket



Salon



Salon, port forward



Salon, port side detail



Salon, Port side settee



Salon, starboard forward



Salon, starboard side settee



Nav Station



Nav Station



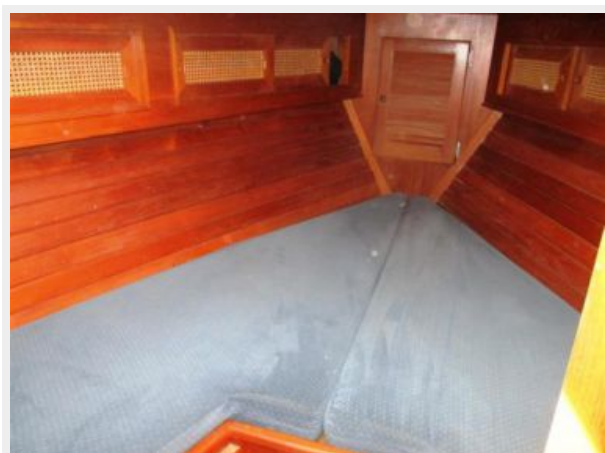
Galley



Companionway



Fore Cabin berth

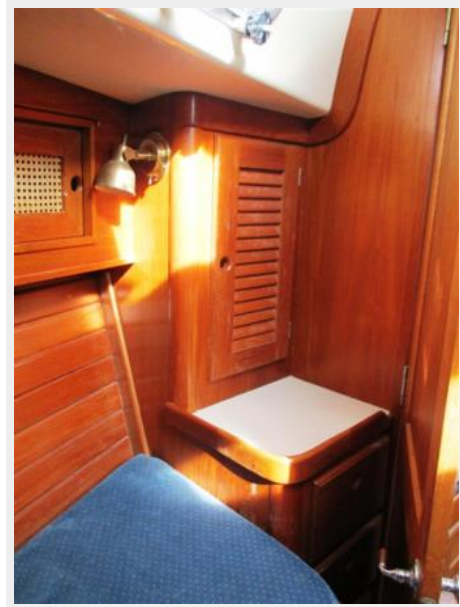


Fore Cabin forepeak access



Fore Cabin berth, starboard side aft

Fore Cabin berth, starboard side



Fore Cabin berth, port side aft



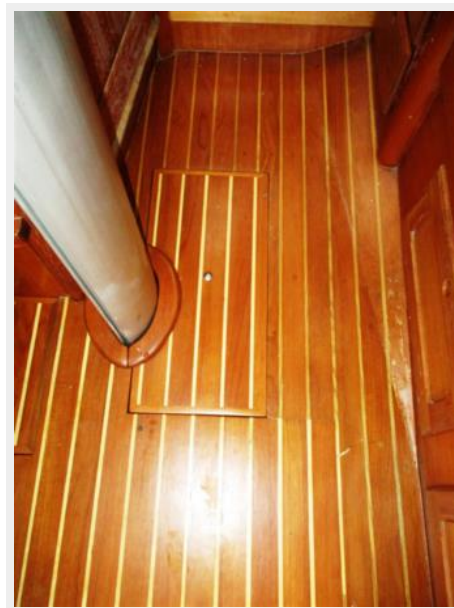
Head from Fore Cabin



Head from Salon



Salon sole



Cabin Sole detail



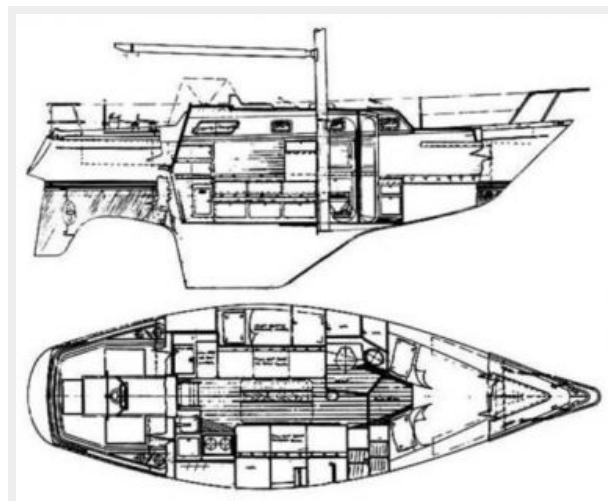
New water tank



Bristol 31.1 Sailplan



Bristol 31.1 Profile & Layout



КОНТАКТЫ

Андрей Шестаков (Andrey Shestakov) – ведущий яхтенный брокер отдела продаж яхт и судов компании Shestakov Yacht Sales Inc. Официальный представитель Shestakov Yacht Sales Inc. для русскоговорящих клиентов в центральном офисе компании в Майами/Форт Лодердейл/Флорида/США.

Контактная информация

Email: andrey@shestakovyachtsales.com

Web: shestakovyachtsales.com

Телефоны

Краснодарский край: **+7(918)465-66-44**

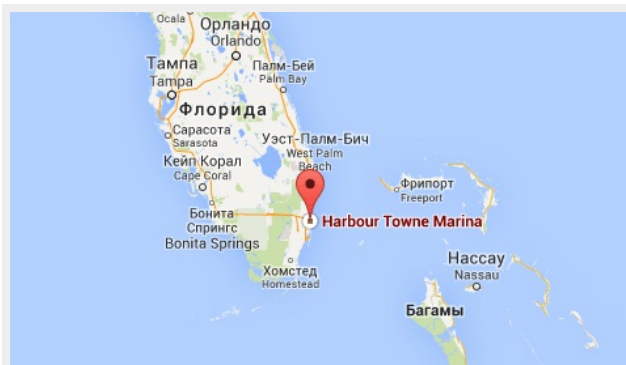
США, Майами, Флорида: **+1(954)274-4435**

Время работы

Понедельник – Суббота: **9:00 - 21:00**
EDT

Воскресенье: **Закрето**

Адрес



Harbour Towne Marina, 850 NE 3rd St,
STE 213, Dania, FL 33004