

JAMBO — CUSTOM



Builder: CUSTOM

Year Built: 1964

Price: PRICE ON APPLICATION

Location: United States

LOA: 38' 6" (11.71m)

Beam: 11' 6" (3.51m)

Max Draft: 5' 9" (1.75m)

Our experienced yacht broker, Andrey Shestakov, will help you choose and buy a yacht that best suits your needs **JAMBO — CUSTOM** from our catalogue. Presently, at Shestakov Yacht Sales Inc., we have a wide variety of yachts available on our sale's list. We also work in close contact with all the big yacht manufacturers from all over the world.

If you would like to buy a yacht **JAMBO — CUSTOM** or would like help answering any questions concerning purchasing, selling or chartering a yacht, please call **+1(954)274-4435**

TABLE OF CONTENTS

TABLE OF CONTENTS	2
SPECIFICATIONS	3
Overview	3
Basic Information	3
Dimensions	3
Speed, Capacities and Weight	3
Engine Information	4
DETAILED INFORMATION	5
Exclusions	5
Disclaimer	5
PHOTOS	7
CONTACTS	25
Contact details	25
Telephones	25
Office hours	25
Address	25

SPECIFICATIONS

Overview

This 1964 Nantucket 38 is a yacht of distinction and pedigree. At the age of 30, yacht designer Alan Gurney was given his first commission by legendary ocean racer George Moffett. George Moffett's "Guinevere", a 48 foot Jacobsen-built aluminum yawl which had won the SORC in 1966, was the second of two ocean racers Alan Gurney had designed for Moffett. The first was a wood-built boat, the Nantucket 38, which he sailed in the 1964 Bermuda Race.

JAMBO which means "Hello" in Swahili, was built in the Netherlands by the Brandt-Moller boat yard known for their high ideals and only the finest workmanship and materials. She has mahogany planking over laminated oak frames using silicon bronze fasteners and an 8,000 lb. lead keel. JAMBO has been continually maintained and upgraded to a very high standard. A classic design with updated Garmin Electronics, Yanmar Diesel, Aquadrive, Norcold Refrigeration and Webasto Heat and Air Conditioning. Jambo is a must see vessel. She is a truly unique sailing vessel for a truly unique sailor!

Basic Information

Model Year: 1964

Year Built: 1964

Country: United States

Dimensions

LOA: 38' 6" (11.71m)

LWL: 26' 6" (8.08m)

Beam: 11' 6" (3.51m)

Max Draft: 5' 9" (1.75m)

MFG Length: 38' 0" (11.58m)

Speed, Capacities and Weight

Displacement: 17000 Pounds

Water Capacity: 80 Gallons

Fuel Capacity: 40 Gallons

Engine Information

Engines: 1

Manufacturer: Yanmar

Model: 3GM30

Engine Type: Inboard

Fuel Type: Diesel

DETAILED INFORMATION

Upgrades

- Rebuilt 1998 Yanmar 3GM30 with less than 600 Hours
- New Engine wiring harness
- New Alternator
- New Starter
- New Control Cables
- Rebuilt Aqua drive
- New Pro Charge Battery Charger
- New Batteries
- New Jabsco 36960-2000 Bilge Pump
- New Jabsco 36900-1000 Bilge Pump
- New Norcold Refrigeration SCAT-4408F-L
- New Webasto FCFP 12,000 BTU AC
- New Garmin 24 mile Radar
- New Garmin GPSMDP XSV
- New Garmin Wind Instruments
- Updated Nova Electrical Panel
- Updated Electrical Wiring
- Updated Standing and Running Rigging
- Update Lewmar 52 ST Primary Winches
- Harken Roller Furling
- Hild Stoway Mainsail

Disclaimer The Company offers the details of this vessel in good faith but cannot guarantee or warrant the accuracy of this information nor warrant the condition of the vessel. A buyer should instruct his agents, or his surveyors, to investigate such details as the buyer desires validated. This vessel is offered subject to prior sale, price change, or withdrawal without notice.

Exclusions

Owner's personal belongings.

Disclaimer

The Company offers the details of this vessel or yacht in good faith but cannot guarantee or

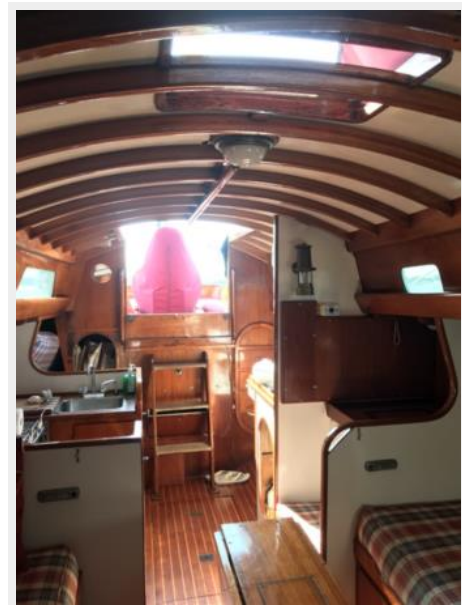
warrant the accuracy of this information nor warrant the condition of the vessel. A buyer should instruct his representatives, agents, or his surveyors, to investigate such details as the buyer desires validated. This vessel or yacht is offered subject to prior sale, price change, or withdrawal without notice.

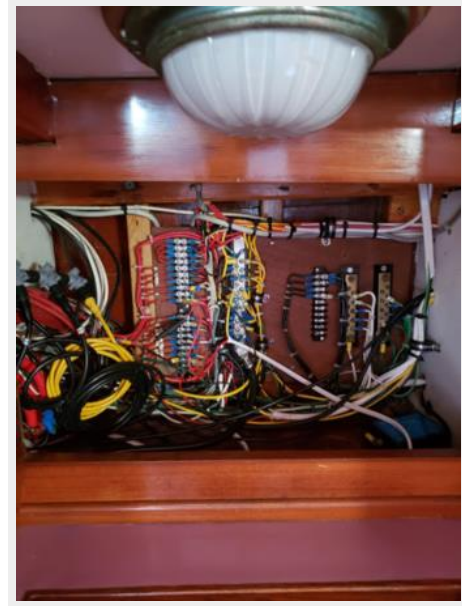
PHOTOS

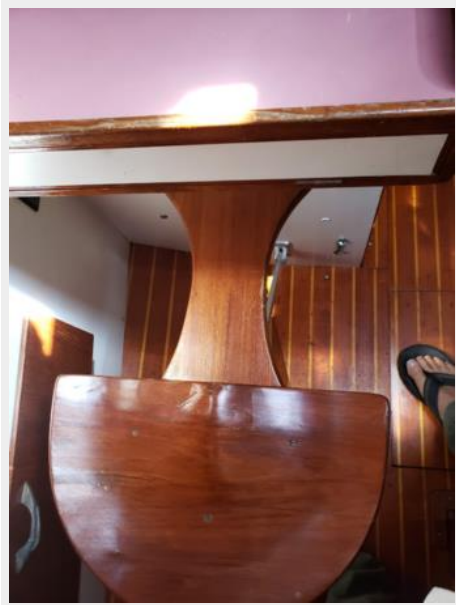


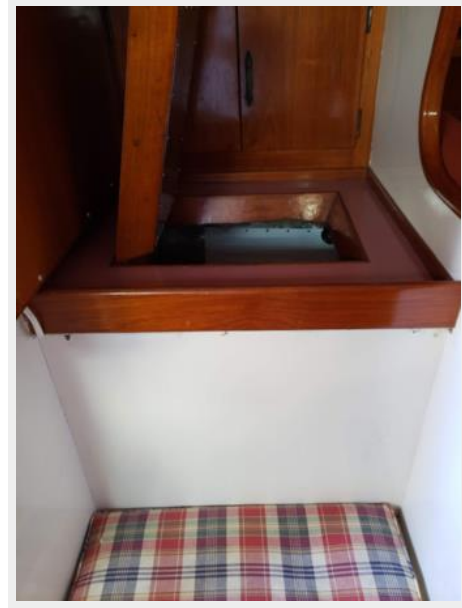








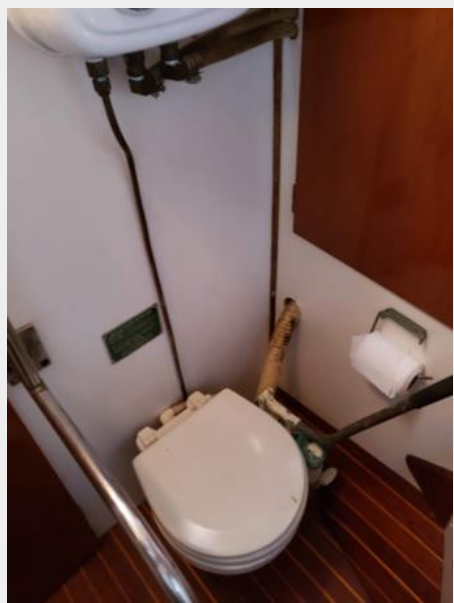


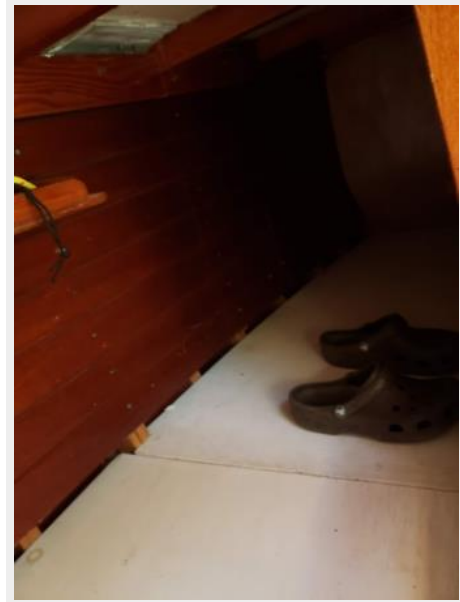


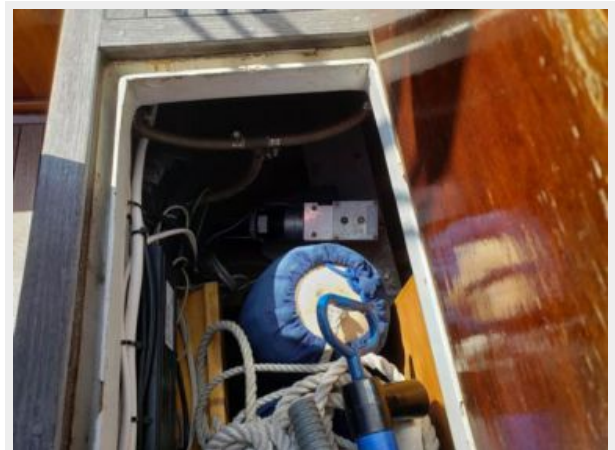
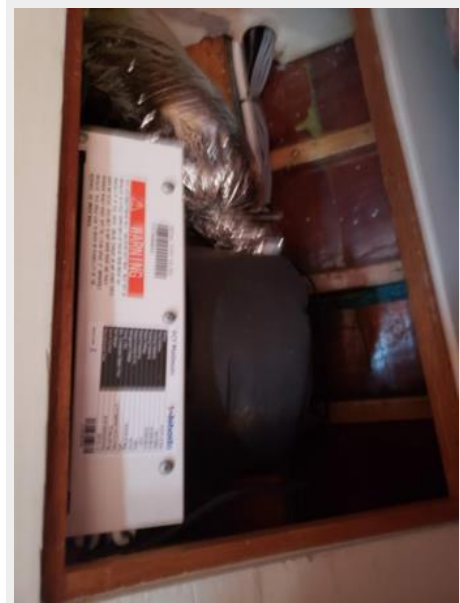
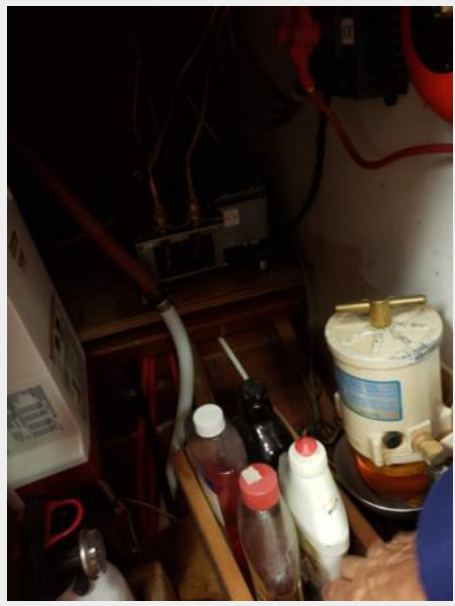






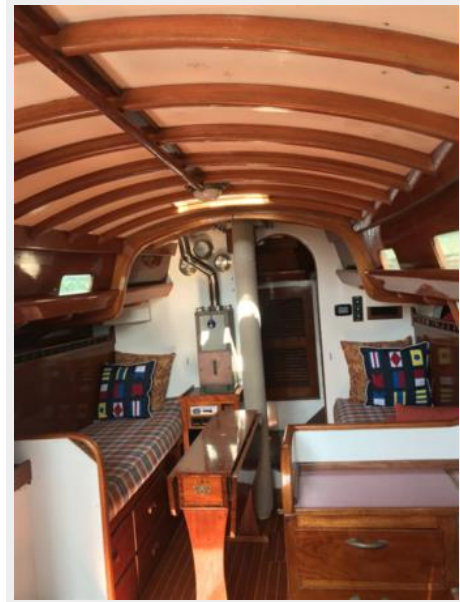
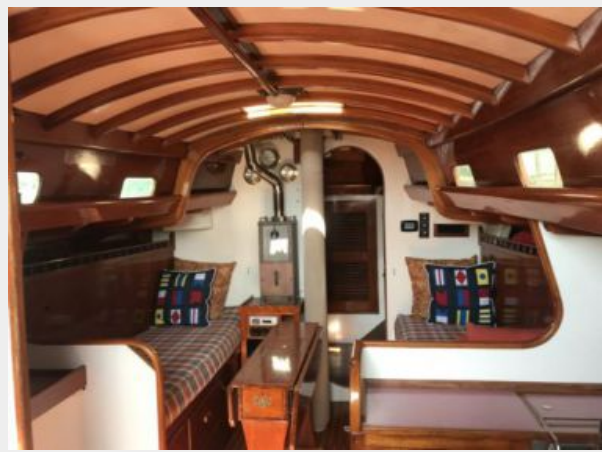
















CONTACTS

Andrey Shestakov, leading yacht broker of the sales department of Shestakov Yacht Sales Inc. Shestakov Yacht Sales Inc., the official representative of the Miami/Fort Lauderdale FL headquarters.

Contact details

Email: andrey@shestakovyachtsales.com

Web: shestakovyachtsales.com/en/

Telephones

USA: +1(954)274-4435

Office hours

Monday – Saturday: **9:00 - 21:00** EDT

Sunday: **closed**

Address



Harbour Towne Marina, 850 NE 3rd St,
STE 213, Dania, FL 33004