

FINALE — GULFSTAR



Builder: GULFSTAR

Year Built: 1985

Price: PRICE ON APPLICATION

Location: United States

LOA: 49' 0" (14.94m)

Beam: 15' 1" (4.60m)

Min Draft: 3' 10" (1.17m)

Cruise Speed: 13 Kts. (15 MPH)

Max Speed: 17 Kts. (20 MPH)

Our experienced yacht broker, Andrey Shestakov, will help you choose and buy a yacht that best suits your needs **Finale — GULFSTAR** from our catalogue. Presently, at Shestakov Yacht Sales Inc., we have a wide variety of yachts available on our sale's list. We also work in close contact with all the big yacht manufacturers from all over the world.

If you would like to buy a yacht **Finale — GULFSTAR** or would like help answering any questions concerning purchasing, selling or chartering a yacht, please call **+1(954)274-4435**

TABLE OF CONTENTS

TABLE OF CONTENTS	2
SPECIFICATIONS	4
Overview	4
Basic Information	4
Dimensions	4
Speed, Capacities and Weight	4
Accommodations	4
Hull and Deck Information	5
Engine Information	5
DETAILED INFORMATION	6
Exclusions	8
Disclaimer	8
PHOTOS	9
access to flybridge	11
salon looking forward	11
salon looking aft	11
eat-in galley	11
galley	11
Utility/laundry room	12
galley looking aft	12
forward guest stateroom	12
forward guest stateroom	12
forward head	13
office / 3rd stateroom	13
office / 3rd stateroom	13
entering master stateroom	13
master stateroom portside	14
master stateroom looking forward	14

master head	14
master stateroom looking aft	14
master head	15
engine room	15
port engine	15
starboard engine	15
generator	15
CONTACTS	16
Contact details	16
Telephones	16
Office hours	16
Address	16

SPECIFICATIONS

Overview

Finale is a nice example of the popular Gulfstar Flybridge Motor Yacht model. Her clean, very roomy, updated interior has a huge salon w/wing doors to the side decks, a spacious galley/dining area, laundry room and three nice staterooms one of which is currently configured as an office. Powered with T-375hp Caterpillar 3208TI diesels.

Basic Information

Model Year: 1985

Year Built: 1985

Country: United States

Dimensions

LOA: 49' 0" (14.94m)

LWL: 44' 4" (13.51m)

Beam: 15' 1" (4.60m)

Min Draft: 3' 10" (1.17m)

MFG Length: 49' 0" (14.94m)

Speed, Capacities and Weight

Cruise Speed: 13 Kts. (15 MPH)

Max Speed: 17 Kts. (20 MPH)

Displacement: 42000 Pounds

Gross Tonnage: 21 Pounds

Water Capacity: 795 Gallons

Fuel Capacity: 300 Gallons

Accommodations

Total Heads: 2

Hull and Deck Information

Hull Material: Fiberglass

Engine Information

Engines: 2

Manufacturer: Caterpillar

Model: 3208TI

Engine Type: Inboard

Fuel Type: Diesel

DETAILED INFORMATION

Interior configuration

The unique Interior layout configuration provides surprising spaciousness. There is a large aft stateroom, an amidship office with daybed and an additional stateroom forward. There are two full head compartments with stall showers. There is a large open galley with dinette and a very comfortable large salon.

The main salon has aft doors leading out to the aft deck and two doors forward leading out to both the port and starboard side decks. There is a large couch and 2 swivel rockers, a coffee table and 2 end tables. There is a corner entertainment center topped with a 39" TV. An icemaker and bar are located at the forward end of the salon.

The galley is forward down to port and has an LG microwave, a 4 burner electric stove, a Hotpoint refrigerator freezer, porcelain sink, a Maytag dishwasher and abundant drawers and cabinets. **The large u-shaped dinette** has a wooden table and two additional wooden chairs. This area has great views out the side windows and large windshield.

A washer and dryer and located further forward and down in the utility room. A door here leads down to the engine room. .

The guest stateroom is all the way forward with a centerline double berth. storage drawers and compartments

The boat's office is located aft of the galley and down a few steps. There is a desk, a daybed and lots of storage closets and compartments.

The master stateroom is further aft with a center, queen sized berth, starboard side dresser, book shelves, 3 large closets to port and a 20" TV..

Flybridge

Accessed through door from salon and up steps

Bimini top with full enclosure

Pedestal helm seat

Danforth compass

Curved aft and port side side bench seating

Storage compartments

Radar, GPS chartplotter, digital depthfinder, and VHF radio

Glendinning engine synchronizer

Exterior

Bow pulpit with anchor roller

Anchor with all chain rode

Ideal electric anchor windlass

Fenders racks

Large side decks with port and stbd boarding gates

Remote control spotlight

Full width aft deck with doors into salon

Full swim platform

Combination ladder (folds down for swimming and also leads up to aft deck)

Electric dinghy davit mounted on hardtop

Disclaimer The Company offers the details of this vessel in good faith but cannot guarantee or warrant the accuracy of this information nor warrant the condition of the vessel. A buyer should instruct his agents, or his surveyors, to investigate such details as the buyer desires validated. This vessel is offered subject to prior sale, price change, or withdrawal without notice.

Engine room

Twin Caterpillar 3208TI diesel engines

Onan 20kw generator

Twin Disc transmissions

Racor fuel filters / water separators

20 gal water heater

Dometic air conditioner (new 2019)

Cablemaster power cable retriever

Battery charger

Exclusions

Owner's personal belongings.

Disclaimer

The Company offers the details of this vessel or yacht in good faith but cannot guarantee or warrant the accuracy of this information nor warrant the condition of the vessel. A buyer should instruct his representatives, agents, or his surveyors, to investigate such details as the buyer desires validated. This vessel or yacht is offered subject to prior sale, price change, or withdrawal without notice.

PHOTOS





access to flybridge



salon looking forward



salon looking aft



eat-in galley



galley



galley looking aft



Utility/laundry room



forward guest stateroom



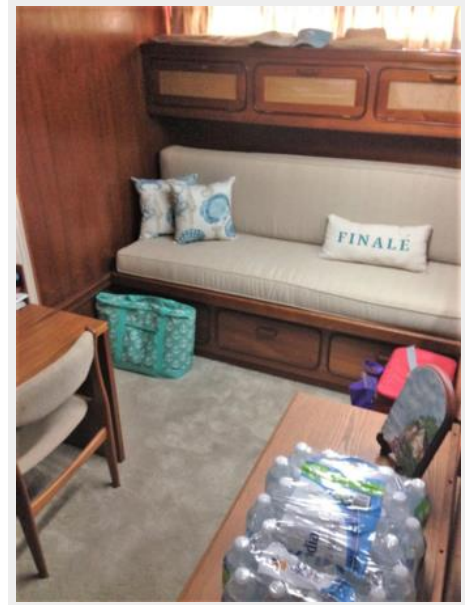
forward guest stateroom



forward head



office / 3rd stateroom



office / 3rd stateroom



entering master stateroom



master stateroom portside



master stateroom looking forward



master stateroom looking aft



master head



master head



engine room



port engine



starboard engine



generator



CONTACTS

Andrey Shestakov, leading yacht broker of the sales department of Shestakov Yacht Sales Inc. Shestakov Yacht Sales Inc., the official representative of the Miami/Fort Lauderdale FL headquarters.

Contact details

Email:
andrey@shestakovyachtsales.com

Web: shestakovyachtsales.com/en/

Telephones

USA: **+1(954)274-4435**

Office hours

Monday – Saturday: **9:00 - 21:00 EDT**

Sunday: **closed**

Address



Harbour Towne Marina, 850 NE 3rd St,
STE 213, Dania, FL 33004