

## GYPSY — ALBERG SAILBOATS



**Builder:** Alberg Sailboats

**Year Built:** 1968

**Price:** PRICE ON APPLICATION

**Location:** United States

**LOA:** 37' 3" (11.33m)

**Beam:** 10' 3" (3.10m)

**Max Draft:** 5' 6" (1.68m)

Our experienced yacht broker, Andrey Shestakov, will help you choose and buy a yacht that best suits your needs **Gypsy — Alberg Sailboats** from our catalogue. Presently, at Shestakov Yacht Sales Inc., we have a wide variety of yachts available on our sale's list. We also work in close contact with all the big yacht manufacturers from all over the world.

If you would like to buy a yacht **Gypsy — Alberg Sailboats** or would like help answering any questions concerning purchasing, selling or chartering a yacht, please call **+1(954)274-4435**

---

# TABLE OF CONTENTS

---

TABLE OF CONTENTS	2
SPECIFICATIONS	3
Overview	3
Basic Information	3
Dimensions	3
Speed, Capacities and Weight	3
Accommodations	4
Hull and Deck Information	4
Engine Information	4
DETAILED INFORMATION	5
Exclusions	7
Disclaimer	7
PHOTOS	8
CONTACTS	22
Contact details	22
Telephones	22
Office hours	22
Address	22

---

# SPECIFICATIONS

---

## Overview

---

This beautiful classic design by renown designer Carl Alberg was so well received that she had a 22 year production run. Her beautiful lines and graceful overhangs turns heads wherever so goes. Built by Whitby Boat Works in Canada her full keel and solid construction provide excellent handling in a seaway. She is roomy for her time with lots of storage yet has a respectable 162 PHRF rating. Are you looking for a self-sufficient blue-water cruising sailboat with proven capability and classic style? This legendary 1968 Alberg 37 fits the bill. Gypsy has been continually maintained and upgraded. She features a rebuilt Perkins 4-108 engine with 1,300 hours, freshly painted deck and hull. Her bottom was soda blasted and barrier coated with Interlux 2000E and four coats of Petit Trindad Pro antifouling paint. Upgraded and inspected standing rigging, new running rigging, and new Quantum sails. She carries 100+ gallons of water, has a composting head, a 600 amp house battery bank, Air X wind generator, 4 solar panels, L.E.D. lighting and proper ground tackle for extended off the grid cruising. Gypsy's safety gear includes a RescueMe EPRIB 1 and a 6 person Offshore Commander 2.0 life raft. Gypsy is a proper yacht and has just completed a two year cruise. Her owners have moved ashore but she is ready to go again. Call today and begin living your dreams!

## Basic Information

---

**Model Year:** 1968

**Year Built:** 1968

**Country:** United States

## Dimensions

---

**LOA:** 37' 3" (11.33m)

**LWL:** 26' 6" (8.08m)

**Beam:** 10' 3" (3.10m)

**Max Draft:** 5' 6" (1.68m)

**MFG Length:** 37' 0" (11.28m)

## Speed, Capacities and Weight

---

**Displacement:** 16800 Pounds

**Water Capacity:** 100 Gallons

**Fuel Capacity:** 47 Gallons

---

## Accommodations

---

**Total Cabins:** 2

**Total Berths:** 3

**Total Heads:** 1

---

## Hull and Deck Information

---

**Hull Material:** Fiberglass

---

## Engine Information

---

**Engines:** 1

**Manufacturer:** Perkins

**Model:** 4-108 Rebuilt

**Engine Type:** Inboard

**Fuel Type:** Diesel

# DETAILED INFORMATION

---

## Recent Upgrades

- Soda blasted, Interlux 2000E barrier coat system applied 2019
- Petit Trinidad Pro antifouling (4 coats) 2019
- Topsides repainted with Awlgrip 2019
- Deck refinished and repainted with Signature Finish products 2014
- Perkins 4-108 COMPLETELY rebuilt in 2007
- Rebuilt raw water pump 2015
- New 61 amp Delco Remy alternator 2019
- New electrical and plumbing systems 2007
- Solar Powered Vent in Chain Locker 2019
- Homemade Hard dodger
- Bimini 2019
- Hebridean wind vane (80% built - all materials)
- New interior cushions with new foam and micro-suede fabric. 2" extra memory foam in V-berth 2014
- Varnished cherry wood interior - refit in 2007
- Completely new electrical and plumbing systems 2007
- New house bank and starter batteries 2015 (600 amp hr house bank, 6 volt golf batteries)
- B&G 7 Vulcan chart plotter
- New running rigging 2017 New standing rigging,
- Quantum 120% genoa with foam luff 2018
- Quantum Mainsail 2018

---

## Interior

\* Varnished cherry wood interior - refit in 2007 \* One single berth & two double berths

\* Private head ? Foot pump operated shower \* Opening Ports with metal and plastic screens \*  
New interior cushions with new foam and micro-suede fabric. 2" extra memory foam in V-berth  
2014 \* Newport diesel cabin heater. Plumbed correctly. \* Propane 3-burner Stove/Oven

\* 20lb aluminum propane tank \* Xyntrex Propane Detection

\* Smoke detector \* Adler Barbour 12v Refrigeration & Freezer (not operational)

\* Dometic CFX-35US 1.1 cu. ft. Portable Freezer/Refrigerator \* Double stainless steel sink \* Cold  
pressurized water

\* stern water catcher

---

\* Metric and standard tool sets

---

## Electronics and Electrical

B&G 7 Vulcan chart plotter

Skymatewindmeter

- Furuno Radar (not operational)
  - Raymarine radar (not installed)
  - Horizon Multi-Instrument (Depth and Speed)
  - Ritchie compass
  - ICOM VHF
  - JVC stereo with indoor speakers 2015
  - Ham radio antenna
  - All LED lights throughout interior
  - 30 Amp shore power
  - Charge Pro 20Amp Automatic battery charger /inverter
  - New 61 amp Delco Remy alternator 2019
  - Air X Wind turbine
  - 4 mounted solar panels
  - New house bank and starter batteries 2015 (600 amp hr house bank, 6 volt golf batteries)
  - Completely new electrical and plumbing systems 2007
- 

## On Deck

- Simpson Lawrence anchor windlass
  - 20kg Rocna, 20 kg Bruce, 120 feet chain, additional nylon rode
  - Tiller steering
  - Quantum 120% genoa with foam luff and main 2018
  - Spare main and genoa
  - ProFurl Roller Furling Headsail
  - Cockpit VHF extension
  - Hard dodger & bimini
  - Air X Wind turbine
  - 4 mounted solar panels
  - Hebridean wind vane (80% built - all materials)
- 

## Safety Gear

Outfitted with new safety equipment that's up-to-date, this boat features a swim ladder accessible

---

---

from the water, an overboard rescue system, radar reflector, EPIRB, overboard search and rescue light, life jackets, and a 6 person life raft. With enough engine parts, spares, tools, and equipment; this boat has enough onboard to repair almost anything on the go.

- RescueME EPIRB 1 Category II Manual Release Liferaft Revere Offshore Commander 2.0 Valise 6 person
- Xintrex Propane Detection
- Smoke detector

---

**Disclaimer** The Company offers the details of this vessel in good faith but cannot guarantee or warrant the accuracy of this information nor warrant the condition of the vessel. A buyer should instruct his agents, or his surveyors, to investigate such details as the buyer desires validated. This vessel is offered subject to prior sale, price change, or withdrawal without notice.

---

## Exclusions

---

Owner's personal belongings.

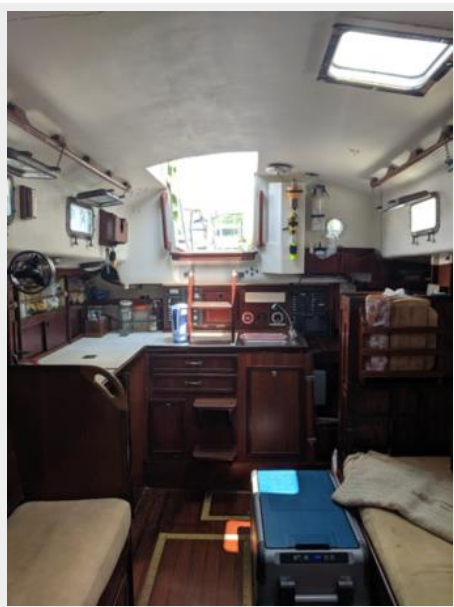
---

## Disclaimer

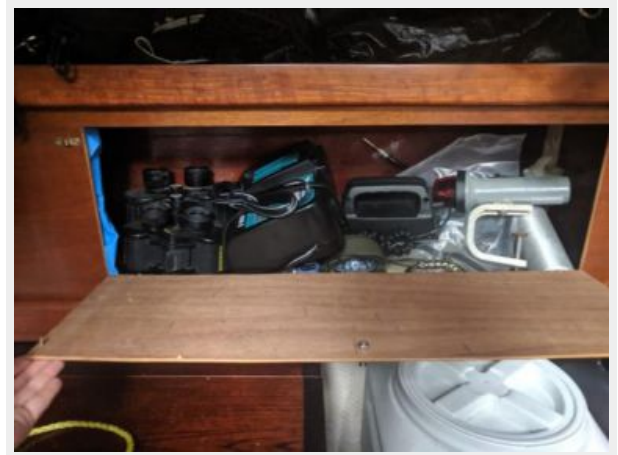
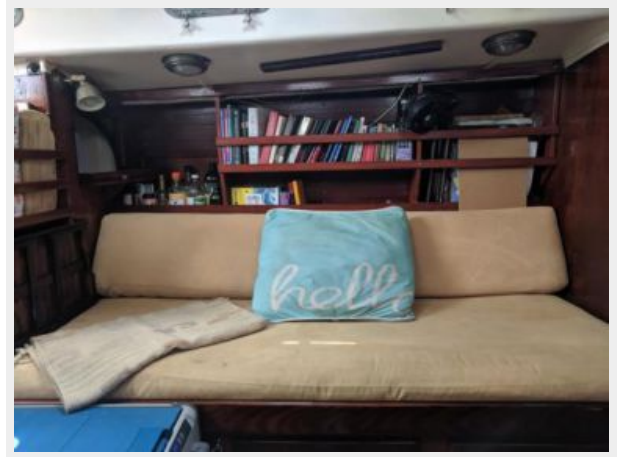
---

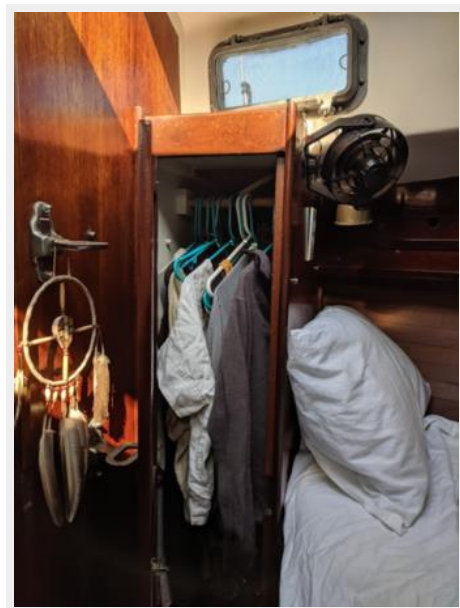
The Company offers the details of this vessel or yacht in good faith but cannot guarantee or warrant the accuracy of this information nor warrant the condition of the vessel. A buyer should instruct his representatives, agents, or his surveyors, to investigate such details as the buyer desires validated. This vessel or yacht is offered subject to prior sale, price change, or withdrawal without notice.

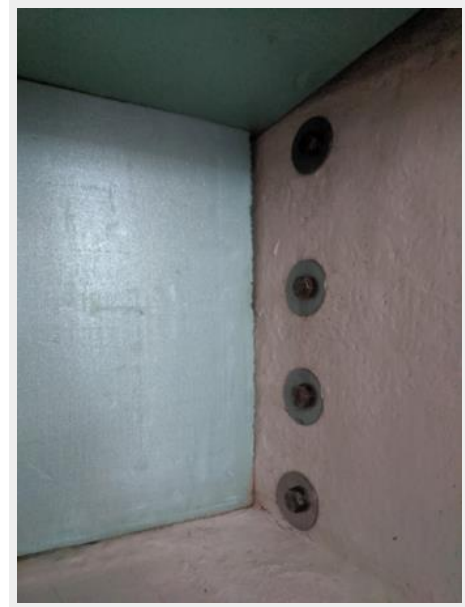
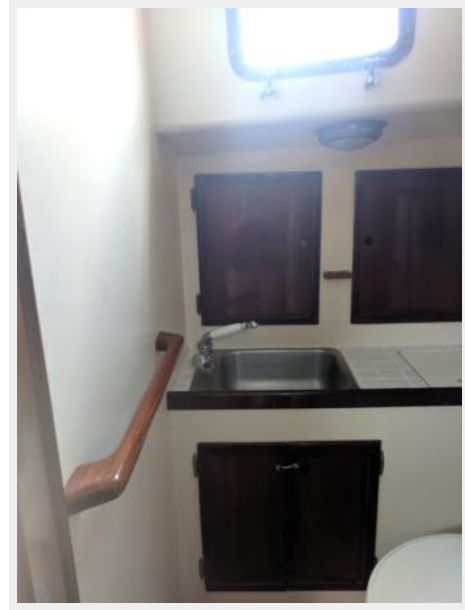
# PHOTOS







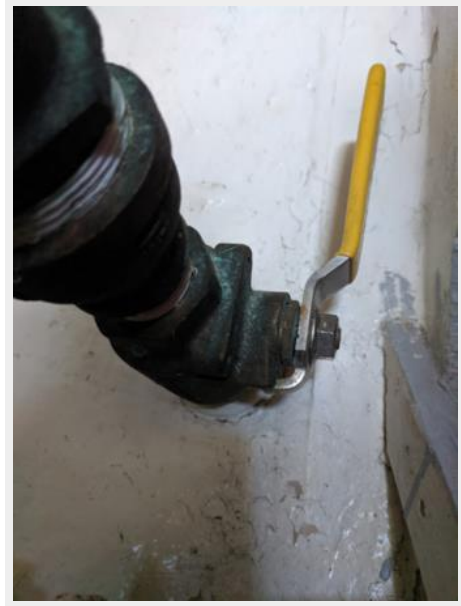




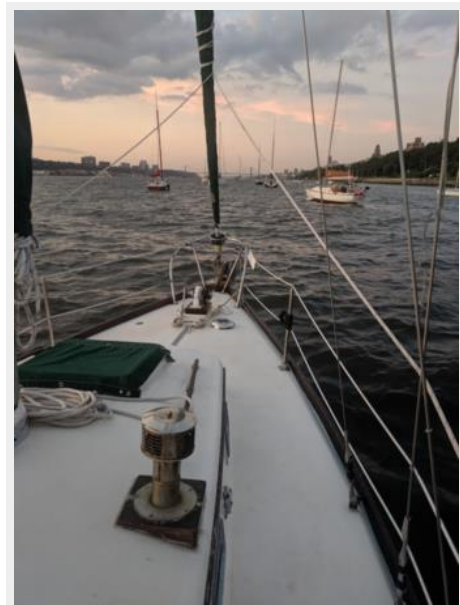


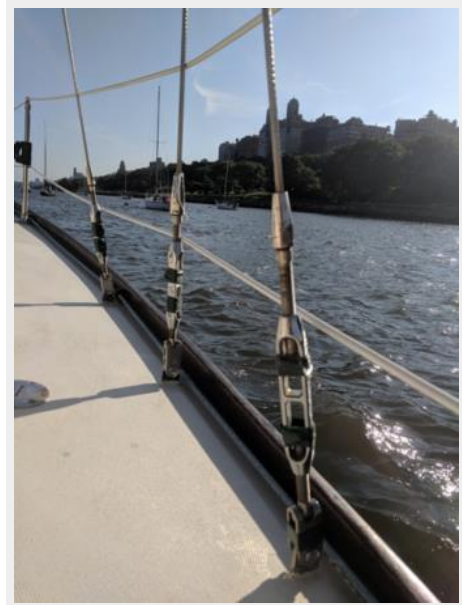
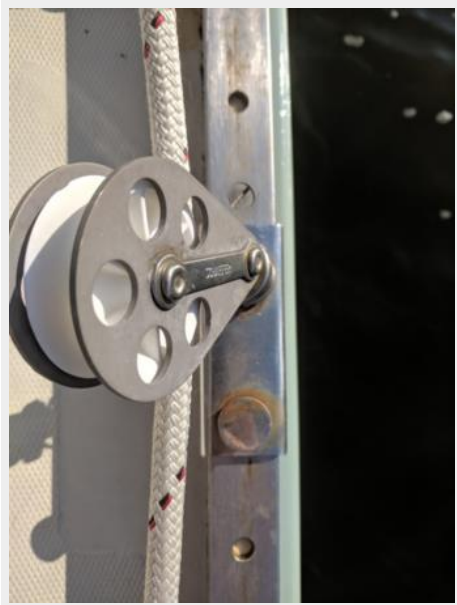
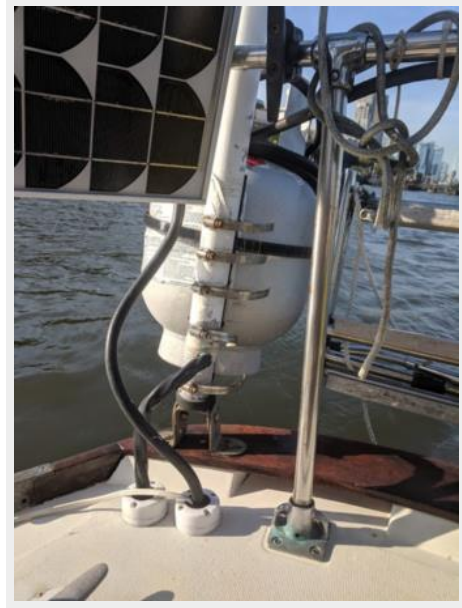
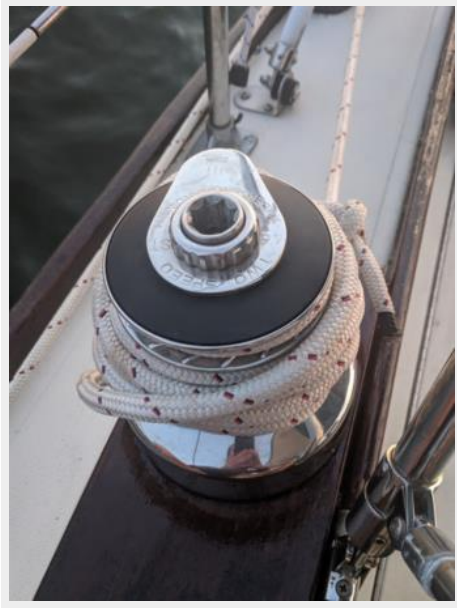




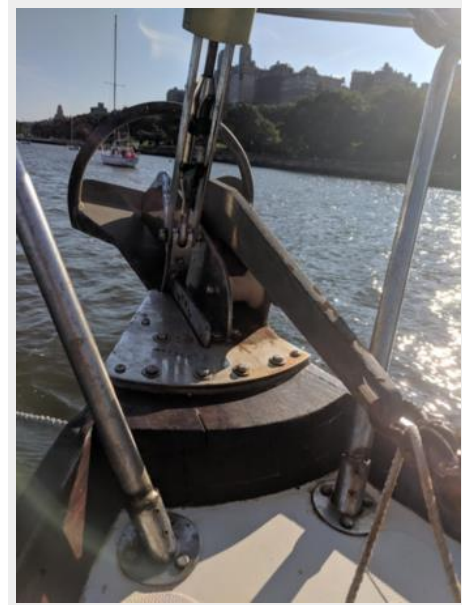
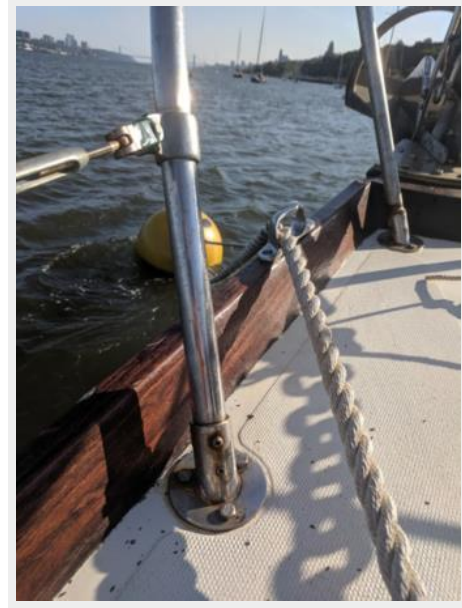
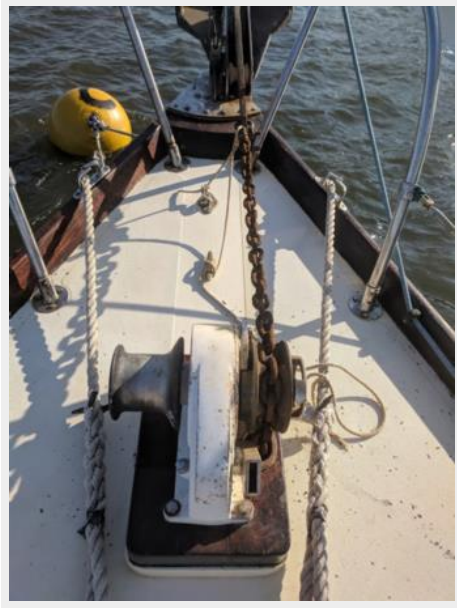


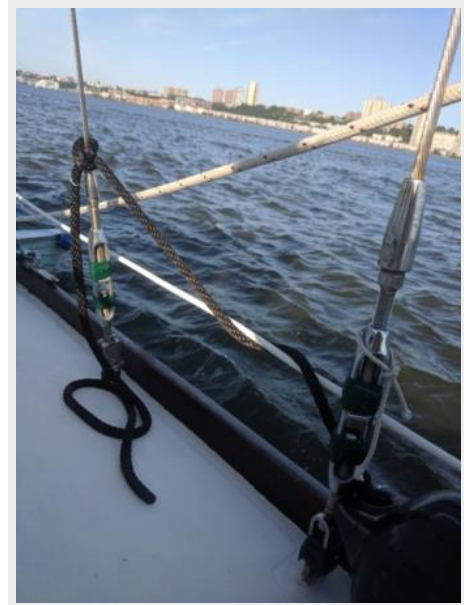
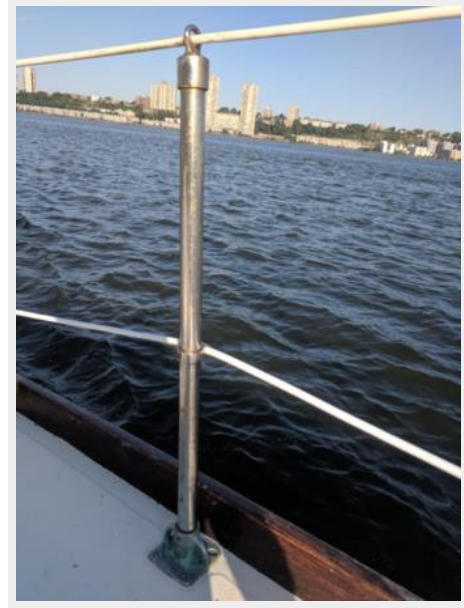
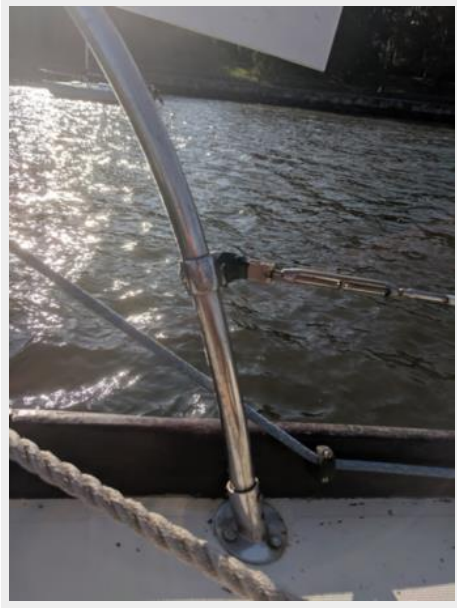






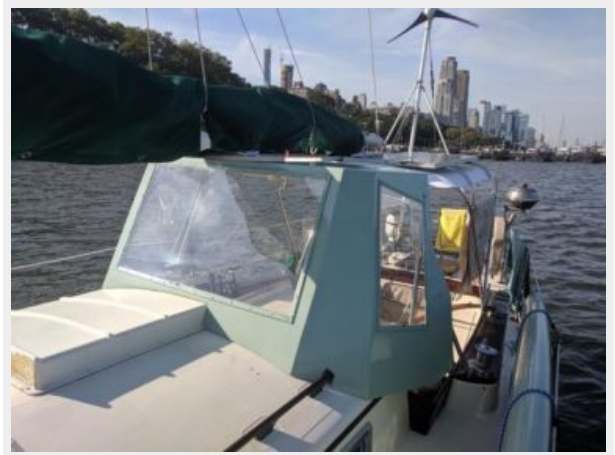
















# CONTACTS

---

Andrey Shestakov, leading yacht broker of the sales department of Shestakov Yacht Sales Inc. Shestakov Yacht Sales Inc., the official representative of the Miami/Fort Lauderdale FL headquarters.

## Contact details

---

Email: [andrey@shestakovyachtsales.com](mailto:andrey@shestakovyachtsales.com)

Web: [shestakovyachtsales.com/en/](http://shestakovyachtsales.com/en/)

## Telephones

---

USA: +1(954)274-4435

## Office hours

---

Monday – Saturday: **9:00 - 21:00** EDT

Sunday: **closed**

## Address

---



Harbour Towne Marina, 850 NE 3rd St,  
STE 213, Dania, FL 33004