

SECOND WIND — CATALINA



Судостроитель: CATALINA

Год постройки: 2000

Цена: ЦЕНА ЯХТЫ ПО ЗАПРОСУ

Местонахождение: United States

Длина общая: 38' 6" (11.71m)

Ширина: 12' 4" (3.76m)

Купить **Second Wind — CATALINA** а также выбрать подходящую вам яхту из нашего каталога яхт вам поможет опытный яхтенный брокер Андрей Шестаков. На сегодняшний день компания **Shestakov Yacht Sales Inc.** имеет большое количество яхт в собственном списке продаж, а также тесно сотрудничает со всеми крупными яхтенными производителями по всему миру.

Для того чтобы купить яхту **Second Wind — CATALINA** а также проконсультироваться по любому вопросу связанному с покупкой, продажей, чартером яхт позвоните по телефону **+7(918)465-66-44**.

ОГЛАВЛЕНИЕ

ОГЛАВЛЕНИЕ	2
ХАРАКТЕРИСТИКИ	3
Обзор	3
Основная информация	3
Размеры	3
Скорость, вместимость и масса	3
Размещение	3
Корпус и палуба	4
Информация о двигателе	4
ПОДРОБНОЕ ОПИСАНИЕ	5
Исключения	7
Отказ от ответственности	7
ФОТОГРАФИИ	8
КОНТАКТЫ	12
Контактная информация	12
Телефоны	12
Время работы	12
Адрес	12

ХАРАКТЕРИСТИКИ

Обзор

This model impressed me as a broker when it was introduced in 1995. On the sail to Block Island then on to Newport where it was making its debut as a new model it performed flawlessly in rough seas and very heavy winds. As a result I sold many to customers who grew to appreciate its strengths. It has many qualities of much more expensive ocean boats and at a reasonable price. Call to see this one owner boat now. Super price, seller wants this SOLD!

Основная информация

Модельный год: 2000

Год постройки: 2000

Страна: United States

Размеры

Длина общая: 38' 6" (11.71m)

Длина по ватерлинии: 32' 5" (9.88m)

Ширина: 12' 4" (3.76m)

Длина привального бруса: 38' 0"
(11.58m)

Скорость, вместимость и масса

Водоизмещение: 19000 Pounds

Размещение

Всего кают: 2

Всего коек: 4

Всего ком. состава: 1

Корпус и палуба

Материал корпуса: Fiberglass

Информация о двигателе

Двигатели: 1

Производитель: westerbeke

Модель: 24B

Тип двигателя: Inboard

Тип топлива: Diesel

ПОДРОБНОЕ ОПИСАНИЕ

Sail Area

135 genoa , Furling IJPE : 725.92 sq ft I : 50.92 ft J : 14.67 ft P : 44.83 ft E : 15.67 ft Working Sail Area : 725.00 sq ft

Keel Details

Keel #1 Keel Type: Wing Ballast: 7300 lb Displacement: 19500 sq ft Max Draft: 5.50 ft

Manufacturer Provided Description

No AC or Heat. The Catalina 380 is designed to incorporate the performance, accommodations, and features which experienced sailors consider important. All aspects of the Catalina 380 - from the securely stayed rig to the shoal draft keel - reflect a sailing lifestyle. The Catalina 380 is sensibly equipped with an offshore-capable rig with double spreader mast, in-line uppers, intermediates, fore and aft lowers, forestay, and backstay. The inboard shroud base allows for narrow sheeting angles and the ability to carry large genoas. In the cockpit, excellent visibility forward is assured by the low profile ball bearing mainsheet traveler. For the crew, the standard cockpit table comes with two drop leaves and beverage storage. Steering is traditional pedestal layout with stainless guard and a 6-inch compass with stainless binnacle. The wide weather decks are textured nonskid, gently angled surfaces without sharp corners. The oversize stern boarding ladder leads to a hot and cold fresh water shower and two large storage lockers. Below deck the varnished teak interior bulkheads, cabinets, and joinery speak of the quality that goes into making the Catalina 380. Nine opening hatches assure abundant light and ventilation throughout the main cabin. The teak navigation desk is mid ships. It comes with a swivel chair and plenty of space for any one of the several available entertainment and navigation electronics packages. The owner's cabin aft is highlighted by the oversize double berth, with numerous storage bins and lockers within arm's reach. Two separate dressing areas, each with upholstered seat and hanging locker, allow plenty of room to move about in this private retreat. The spacious owner's cabin features numerous lockers, cabinets, and drawers. The reading lamps, abundant natural light and ventilation, and comfortable seating make this cabin an inviting retreat. The L-shaped galley is built for efficient food preparation and quick, easy clean-up. There is plenty of galley storage in the four large over-counter cabinets; the large, dry food bin; and the generous ice box. Both forward and aft cabins have double berths and generous hanging lockers, with plenty of adjacent storage. A private entrance from the owner's cabin leads to the ultra modern head. This bright, airy compartment has the luxury of an enclosed shower with one-piece acrylic door. A separate sink and vanity is provided for family or guests in the forward cabin, along with numerous drawers and shelves for storage of personal items while aboard. The galley has all the latest conveniences and the space to prepare gourmet meals aboard. Amenities include a three-

burner stainless gimballed LP gas stove with oven, polished stainless double sink, and truly cavernous icebox/freezer (Adler Barbour) with convenient front access door. Meal preparation and clean-up are easy with custom molded one-piece countertops and an integrated countertop butcher block - trash chute.

Equipment List

Catalina 380 Specifications - Standard Equipment Spars and Rigging - Full Batten Mainsail, Dacron with Two Reef Points and Dutchman Flaking System - 135% Furling Genoa with UV Protection - Complete Standing and Running Rigging - Internal Pre-Stretched Dacron Rope Halyards - PVC Wiring Conduit with Messenger in Mast - Anodized Mast and Boom Sail Handling and Equipment - Two, Two-Speed Self Tailing Primary Winches - Two, Two-Speed Self Tailing Mainsheet - Halyard Winches - Second Jib Halyard led Aft with Sheet Stopper - Double Ended Mainsheet System - 10" Winch Handle - Mainsheet Traveler with Car and Adjuster System - Genoa Tracks Inboard - All Halyards Led Aft, to Sheet Stoppers - Headsail Furling Gear - Single Line Mainsail Reefing System - Boom Vang, Solid S.S. Adjustable Type, Steering & Controls - Steering, Brake, Engine Controls, on Pedestal - 40 h.p. Four Cylinder Fresh Water Cooled, Diesel Engine with Reduction Gear - Bronze Propeller, Three Blade folding, - Sea Water Strainer for Engine Cooling - Fully Instrumented Engine Panel - Stainless Steel Destroyer Wheel - Binnacle Compass, 6", Lighted - Emergency Tiller Features and Deck Hardware - One Piece Fiberglass Deck, White with Grey Two-tone - Comfortable Cockpit with Contoured Coamings - Fiberglass Cockpit Table with Two Leaves - Walk Through Stern with Transom Boarding Platform and Storage Lockers - Stern Boarding Ladder with Contour Treads - Double Lifelines with Gates Port and Starboard - Mooring Cleats, Two Fore and Two Aft - Midship Springline Cleats - Molded-in Gel Coat Waterline, Midwatch Blue Midwatch Blue Sheer Stripes - Large Anchor Roller on Foredeck - Electric Anchor Windlass with Foot Switch - Anchor Locker Forward with Provision for Below Deck Chain and Rode Storage - Stainless Steel Hand Rails on Cabin Top - Stern Rails with Observation Seats, Port and Starboard Interior - Varnish Finish on Interior - Teak Veneer and White Laminate Bulkheads and Trim - Cabin Window Shades - Custom Molded Counter Tops - Navigation Station with Chart Table - Owner's Stateroom Aft with Large Centerline Berth, Hanging Lockers, Bureau with Drawers, and Private Access to Head areas - Teak and Holly Veneer Sole - Inner Spring Mattresses on Fore and Aft Berths with Custom Fitted Sheets Galley - Refrigeration, D.C. Powered System - Double Stainless Steel Sinks - Gimballed Three Burner Stove with Oven, Stainless Steel, LPG - Fiberglass Lined Icebox with Racks and Front Opening Door - Pump for Overboard Discharge of Icebox Plumbing System - Pressure Water Distribution System with Filter at Pump - Hot Water Heater with Engine Heat Exchanger and Electric Element - Manual Bilge Pump - Electric Bilge Pump - Marine Head with Holding Tank and Deck Outlet - Macerator Pump for Overboard Discharge of Holding Tank - Vanity Counter with Sink and Medicine Chest in Forward Cabin - Head Aft with Vanity, Medicine Chest and Separate Stall Shower Electrical System - Two Heavy Duty 12 Volt Marine Batteries - Battery Charger - International Running Lights - 115 Volt, 30 Amp Shore Power - Masthead, Foredeck and Steaming Lights - 12 Volt Lighting throughout - Custom 115 Volt AC - 12 Volt DC Electric Panel - Circuit Breakers for AC and DC Electrical Circuits -

Ground Fault Circuit Protection - AC Duplex Receptacles throughout Catalina 380 Optional Equipment - Wing Keel - Cockpit Dodger, Side Panels and Window Covers - Bimini, Extended with Cockpit Dodger - Cockpit Dodger, Side Panels, Window Covers and Bimini with Connector Panel - Safety and Equipment Package - Canvas Package with (1) Mainsail Cover, (1) Wheel Cover, (1) Cockpit Table Cover and (4) Winch Covers - Cockpit Cushions, Vinyl, White with Grey Piping - Cockpit Cushions, Vinyl, with Closed Cell Foam, White with Grey Piping - Main Cabin Upholstery Std. - Microwave Oven, AC Powered - Interior Decor Package Rigging - Std-Mainsail, Standard Electronics Packages - Raytheon ST60 Speed and Depth Wind Systems Mounted on Instrument NavPod with 1" AngleGuard -And ST6002 Autopilot,- VHF Radio: Standard Intrepid with RAM Microphone and Antenna -: Raytheon ST60 Wind System - Navstation Repeater: Raytheon C80 Multi Display - Chartplotter : - Navstation Display: Raytheon RL70 Second Station for - Chartplotter - Radar- Stereo B. Sony CD - Receiver, Two Pair Poly-Planar Speakers each in Main Cabin and Cockpit with Remote Control - Stereo C. Sony Cassette - Receiver - CD Controller, 10 CD Changer, Two Pair Poly-Planar Speakers each in Main Cabin and Cockpit , - Three Blade Cruising Propeller

Engines

Westerbeke 40 hp FWC diesel with only 1542 hours, shaft drive with a feathering 3 blade bronze propeller.

Disclaimer

The Company offers the details of this vessel in good faith but cannot guarantee or warrant the accuracy of this information nor warrant the condition of the vessel. A buyer should instruct his agents, or his surveyors, to investigate such details as the buyer desires validated. This vessel is offered subject to prior sale, price change, or withdrawal without notice.

Исключения

При продаже яхты исключаются личные вещи владельца.

Отказ от ответственности

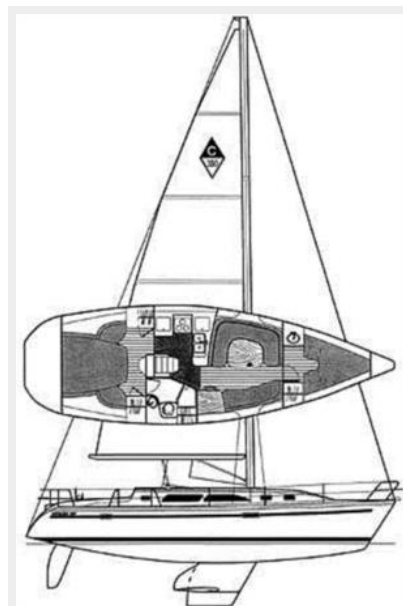
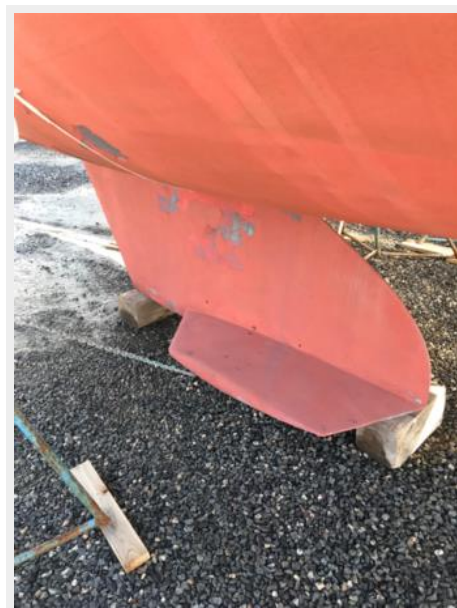
Компания предоставляет описание судна или яхты добросовестно, но не может гарантировать точность этой информации, а также не ручается за техническое состояние. Покупатель должен проинструктировать своих агентов или оценщиков исследовать представленную информацию более подробно, по собственному желанию. Продажа судна или яхты, изменение цены или снятие с продажи будет происходить без предварительного уведомления.

ФОТОГРАФИИ









КОНТАКТЫ

Андрей Шестаков (Andrey Shestakov) – ведущий яхтенный брокер отдела продаж яхт и судов компании Shestakov Yacht Sales Inc. Официальный представитель Shestakov Yacht Sales Inc. для русскоговорящих клиентов в центральном офисе компании в Майами/Форт Лодердейл/Флорида/США.

Контактная информация

Email: andrey@shestakovyachtsales.com

Web: shestakovyachtsales.com

Телефоны

Краснодарский край: **+7(918)465-66-44**

США, Майами, Флорида: **+1(954)274-4435**

Время работы

Понедельник – Суббота: **9:00 - 21:00**
EDT

Воскресенье: **Закрито**

Адрес



Harbour Towne Marina, 850 NE 3rd St,
STE 213, Dania, FL 33004