

J RENEE — CATALINA



Builder: CATALINA

Year Built: 2004

Price: PRICE ON APPLICATION

Location: United States

LOA: 41' 10" (12.75m)

Beam: 13' 10" (4.22m)

Max Draft: 4' 10" (1.47m)

Our experienced yacht broker, Andrey Shestakov, will help you choose and buy a yacht that best suits your needs **J Renee — CATALINA** from our catalogue. Presently, at Shestakov Yacht Sales Inc., we have a wide variety of yachts available on our sale's list. We also work in close contact with all the big yacht manufacturers from all over the world.

If you would like to buy a yacht **J Renee — CATALINA** or would like help answering any questions concerning purchasing, selling or chartering a yacht, please call **+1(954)274-4435**

TABLE OF CONTENTS

TABLE OF CONTENTS	2
SPECIFICATIONS	3
Overview	3
Basic Information	3
Dimensions	3
Speed, Capacities and Weight	3
Accommodations	3
Hull and Deck Information	4
Engine Information	4
DETAILED INFORMATION	5
Exclusions	8
Disclaimer	8
PHOTOS	9
CONTACTS	15
Contact details	15
Telephones	15
Office hours	15
Address	15

SPECIFICATIONS

Overview

A very well cared for Catalina 42'.J Renee is the 3 stateroom model featuring Yanmar diesel power, shoal draft wing keel and a full complement of electronics. This is a clean boat that is not to be missed! This is favorably priced and in very nice overall condition, featuring a furling mainsail for easy handling.

Basic Information

Model Year: 2004

Year Built: 2004

Country: United States

Dimensions

LOA: 41' 10" (12.75m)

LWL: 36' 0" (10.97m)

Beam: 13' 10" (4.22m)

Max Draft: 4' 10" (1.47m)

Clearance: 60' 0" (18.29m)

MFG Length: 42' 0" (12.80m)

Speed, Capacities and Weight

Displacement: 20500 Pounds

Water Capacity: 110 Gallons

Holding Tank: 50 Gallons

Fuel Capacity: 46 Gallons

Accommodations

Total Cabins: 3

Total Berths: 5

Total Heads: 2

Hull and Deck Information

Hull Material: Fiberglass

Hull Finish: Plastic

Engine Information

Engines: 1

Manufacturer: Yanmar

Model: 4JH3E

Engine Type: Inboard

Fuel Type: Diesel

DETAILED INFORMATION

Accommodations

This version is a 3 cabin layout.

Navigation station at the base of the companionway to port.

Galley to starboard featuring ample counter space, gimbaling 3 burner propane stove, oven, and double ss sink, hot/cold pressure water, double sliding drawers set, top and side loading freezer/ice box, Microwave oven, outboard storage cabinets

Forward:

Spacious V berth with outboard shelving both sides and drawer storage underneath

Forward Head/shower to port, connected with forward cabin featuring both private and salon entrances

Midship

Large main salon with" wrap around seating to port and starboard featuring a large fixed center table with couch like seat. Outboard cabinets, shelving

Navigation station at base of companionway to port

Second head/shower at base of companionway starboard

Two separate aft cabins on port and starboard sides.

Galley

The galley is located portside and has excellent storage space. Additional features include:

- Top/Front loading Adler Barbour fridge and freezer
- Ice Box/ Adler Barbour Refrigerator
- Seaward Princess 3 burner gimballed 3 burner propane stove top and oven with cutting board
- Hot and Cold pressure water
- Double S/S sink
- Large counter spaces and drawers

Electronics

. Raymarine RL80C Pathfinder Multi display GPS/Charplotter/Radar at Helm

- Raymarine Autohelm ST6001+ at helm with remote ST600R controller
- RL70Color at navigation station
- Tachometer, engine temperature, fuel and volt gauges on pod/panel at helm
- ST 60 speed, depth Tridata,
- ST60 Wind with True/Apparent function mounted on NavPod at Helm
- Standard Horizon Intrepid VHF with remote and mic at helm
- Standard Horizon VHF w mic at Nav station
- Icom VHF handheld
- 6 inch Ritchie compass on pedestal
- MRD 60 Marine poly-planar stereo w AM/FM/CD and DVD player with Bose speakers/ exterior speakers under Bird seats

Electrical

- 50' shore power cord with receptacle
- 40AMP Charles battery charger
- 1 4D starting battery
- 4 6V house batteries
- 12V and 110V systems with panel with switches /breakers
- interior/ exterior lighting including nav. lights

Sails and Rigging

In Mast Furling Mainsail by Charlston Spar

- Schaefer roller furling genoa
- 2 Lewmar #54 2 speed C/S/T winches
- Maxwell 800 windlass
- saltwater wash down
- Plow Style anchor w chain and nylon line on double SS bow roller
- 1x19 ss rigging wire
- stainless vang

Engines

Yanmar Model 4JH3-B freshwater cooled 4 cyl diesel 56 hp

3 Blade folding bronze propeller

Deck and Hull

Fiberglass reinforced plastic construction both deck and hull

Stainless Bow and Stern pulpits, stanchions

folding stern ladder

"Bird" seats aft port and starboard

Double lifelines

port, starboard and stern entrance gates

Plow style anchor w chain, nylon rode, swivel

Garhauer Traveler with 6:1 reduction

Garhauer hard vang (ss)

10 line brakes on coachroof

double ss anchor roller

2 deck hatch solar vents

6" Ritchie compass pedestal mounted

Dodger and Bimini with SS frame

Canvas boat cover w steel frame

walk thru transom

Lewmar 54 STC primary winches (2)

Lewmar 40STC halyard winches

(7) deck hatches

(2) aft cabin hatches

opening ports provide ventilation

ample seating in cockpit for 8

Folding cockpit table and drink holder/cooler

Aluminum mast and boom

double spreaders rig

1 x19 ss rigging wire

Tankage

115 gallons water

46 gallons fuel

52 gallons holding

Additional Information

Dinghy/ outboard motor may be purchased at additional cost

Disclaimer The Company offers the details of this vessel in good faith but cannot guarantee or warrant the accuracy of this information nor warrant the condition of the vessel. A buyer should instruct his agents, or his surveyors, to investigate such details as the buyer desires validated. This vessel is offered subject to prior sale, price change, or withdrawal without notice.

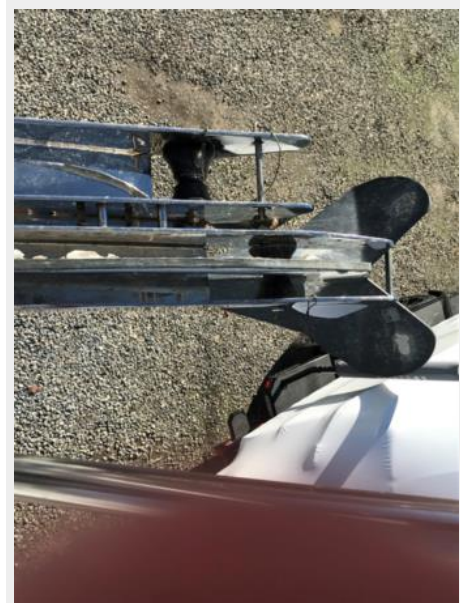
Exclusions

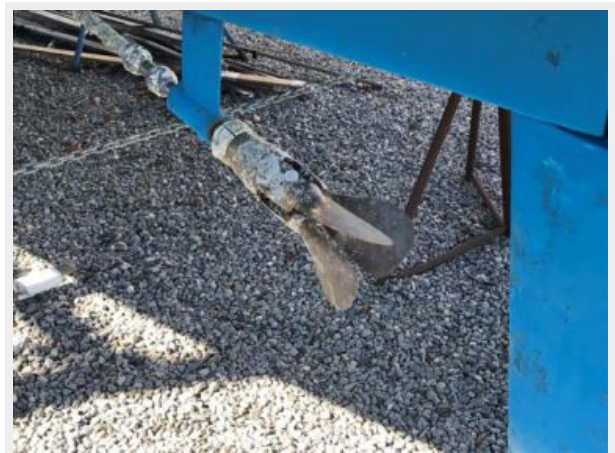
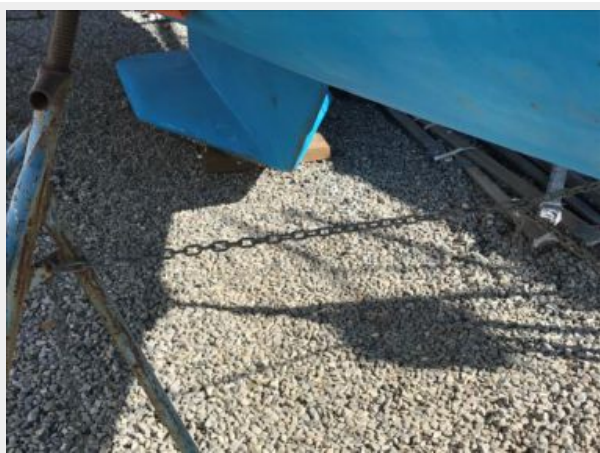
Owner's personal belongings.

Disclaimer

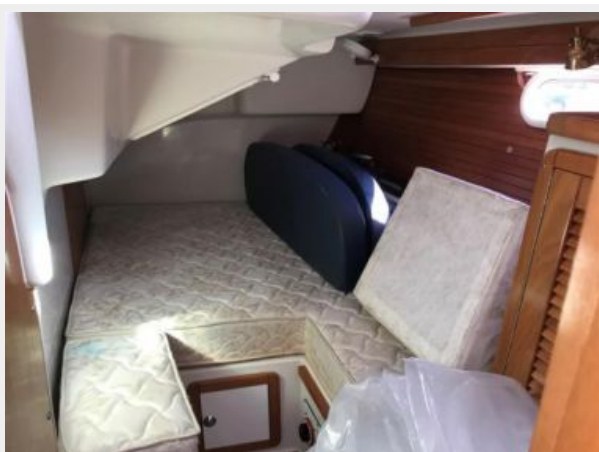
The Company offers the details of this vessel or yacht in good faith but cannot guarantee or warrant the accuracy of this information nor warrant the condition of the vessel. A buyer should instruct his representatives, agents, or his surveyors, to investigate such details as the buyer desires validated. This vessel or yacht is offered subject to prior sale, price change, or withdrawal without notice.

PHOTOS

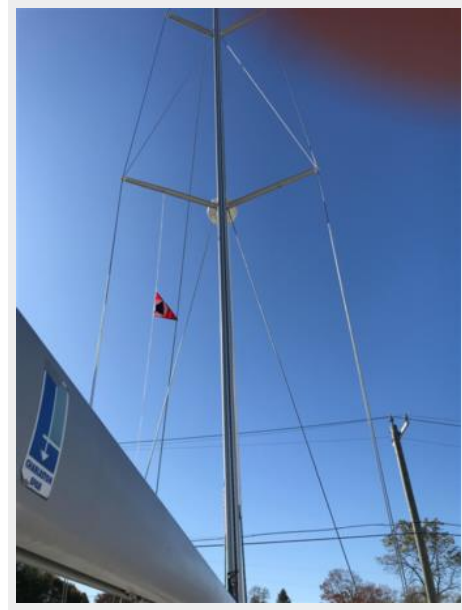












CONTACTS

Andrey Shestakov, leading yacht broker of the sales department of Shestakov Yacht Sales Inc. Shestakov Yacht Sales Inc., the official representative of the Miami/Fort Lauderdale FL headquarters.

Contact details

Email: andrey@shestakovyachtsales.com

Web: shestakovyachtsales.com/en/

Telephones

USA: +1(954)274-4435

Office hours

Monday – Saturday: **9:00 - 21:00** EDT

Sunday: **closed**

Address



Harbour Towne Marina, 850 NE 3rd St,
STE 213, Dania, FL 33004