

REGINA — SWAN



Builder: SWAN

Year Built: 1971

Model: Cruising/Racing Sailboat

Price: PRICE ON APPLICATION

Location: United States

LOA: 37' 0" (11.28m)

Beam: 10' 10" (3.30m)

Min Draft: 0' 0" (0.00m)

Max Draft: 6' 2" (1.88m)

Our experienced yacht broker, Andrey Shestakov, will help you choose and buy a yacht that best suits your needs **Regina — SWAN** from our catalogue. Presently, at Shestakov Yacht Sales Inc., we have a wide variety of yachts available on our sale's list. We also work in close contact with all the big yacht manufacturers from all over the world.

If you would like to buy a yacht **Regina — SWAN** or would like help answering any questions concerning purchasing, selling or chartering a yacht, please call **+1(954)274-4435**

TABLE OF CONTENTS

TABLE OF CONTENTS	2
SPECIFICATIONS	5
Basic Information	5
Dimensions	5
Speed, Capacities and Weight	5
Accommodations	5
Hull and Deck Information	5
Engine Information	6
DETAILED INFORMATION	7
Full Description	7
Exclusions	10
Disclaimer	10
PHOTOS	11
Mooring1a	11
Mooring2a	11
Mooring4a	11
Racing	11
IMG_4371	12
IMG_4369	12
BeingStored1	12
BeingStored2	12
IMG_4378	12
IMG_4375	12
IMG_4374	13
IMG_4379	13
IMG_4383	13
IMG_4385	13
IMG_4386	14

IMG_4387	14
IMG_4391	14
IMG_4399	14
IMG_4400	15
IMG_4401	15
IMG_4441	15
IMG_4444	15
IMG_4445	15
IMG_4446	15
IMG_4425	16
IMG_4426	16
IMG_4428	16
IMG_4427	16
IMG_4409	16
IMG_4411	16
IMG_4414	17
IMG_4412	17
Companionway Steps	17
Companionway Looking Aft	17
IMG_4404	18
IMG_4407	18
Forward Hanging Locker	18
V-Berth	18
V-Berth2.jpg	19
IMG_4408	19
Looking Forward	19
IMG_4431	19
IMG_4416	20
IMG_4417	20

IMG_4421	20
IMG_4422	20
IMG_4424	21
IMG_4437	21
Varnish	21
IMG_4436	21
IMG_4501	22
CONTACTS	23
Contact details	23
Telephones	23
Office hours	23
Address	23

SPECIFICATIONS

Basic Information

Category: Cruising/Racing Sailboat

Sub Category: Classic Yacht

Model Year: 1971

Year Built: 1971

Country: United States

Dimensions

LOA: 37' 0" (11.28m)

LWL: 27' 3" (8.31m)

Beam: 10' 10" (3.30m)

Min Draft: 0' 0" (0.00m)

Max Draft: 6' 2" (1.88m)

Speed, Capacities and Weight

Displacement: 15400 Pounds

Water Capacity: 20 Gallons

Holding Tank: 15 Gallons

Fuel Capacity: 26 Gallons

Accommodations

Total Cabins: 2

Hull and Deck Information

Hull Material: Fiberglass

Engine Information

Engines: 1

Manufacturer: Westerbeke

Model: 30B

Engine Type: Inboard

Fuel Type: Diesel

DETAILED INFORMATION

Full Description

Accommodations

Sleeps up to eight in V-berth, settees, pilot berths, and quarter berths. Interior is finished in light colored wood veneer and teak trim, all beautifully varnished. There is a freshly varnished teak and holly cabin sole and 6'2" headroom. Eight opening ports and one hatch let in plenty of light and air. All cabin lighting replaced with "Cabon Frigast" fixtures from Denmark 2015.

V-berth forward features fold-up berths with storage under. Aft to starboard is a hanging locker. Aft to starboard is the head.

The head features a manual toilet with Y-valves to direct discharge to holding tank, deck pumpout or overboard. The vanity has a pull-out shower. Head sole is varnished teak grating.

Next aft is the Main Saloon with a centerline drop leaf table, settees port and starboard and pilotberths outboard on each side. There is storage behind the settees and under the pilot berths.

The Galley is aft on Starboard and the forward facing chart table is opposite the galley on port.

All of the way aft are quarterberths on either side of the cockpit. Good engine access aft between the quarterberths and forward under the companionway steps. Easy access to the steering quadrant aft between quarterberths.

Galley

L-shaped Galley is located to starboard of the companionway. Features include:

- Two-burner Force 10 LPG stove & oven (approximately 6 years old)
- Single SST sink with foot pumps. No pressure water.
- Ice box
- Ample locker & drawer space

Electrical Equipment

- The electrical system includes both 12 volt and 110 AC system.
- The DC system includes 4 heavy duty 12 volt batteries, House Auxiliary, Engine Starting and Windlass operation.
- The 110 AC system includes GFCI protection.

- Battery Charger Statpower True 20 amp charger
- Shore power cord 30 amp
- Maxwell RC 10 Electric Windlass
- Automatic Bilge Pump- Rule 1500, 500 with Float Switch

Electronics & Navigation

- Simrad RS 86 VHF
- Simrad NSE8 chart plotter at Nav Station
- Lowrance HDS5m chart plotter at helm (2015)
- Lowrance Radar on gimbaled backstay mount
- Simrad AP24 belowdeck autopilot (2015)
- B&G Navigational instruments: Speed/Wind/Depth/Multi (2015) mounted over companionway
- KVH digital compass
- Sestral 5" Compass at the binnacle
- Masthead Windex
- Cape Horn Windvane Self Steering (parts in storage)

Sails & Rigging

Mast-head sloop rig with keel-stepped mast, painted white

Standing rigging replaced 2007

Main Traveler moved aft just forward of helm for short-handed sailing

Manual back-stay adjuster

Removable baby stay on highfield lever

Adjustable lead-blocks on inboard jib track

Spin pole and whisker pole with deck mounts

SAILS:

- Dacron mainsail 2014
- 135 Genoa 2014 on furler
- Older racing sails in good condition

WINCHES:

- Brand New Andersen Winches Fall 2013
- 2-Andersen 52 two-speed self-tailing Primaries

- 2-Andersen 40 two-speed self-tailing Secondaries
- 2-Andersen 40 two-speed self tailing Deck Winches

Deck Equipment

GROUND TACKLE

- New 33lb Stainless Steel Claw anchor
- Approx. 100' 3/8 BBB Anchor Chain and 300' 5/8 White Mega Braid Line
- Maxwell RC 10 Electric Windlass with foot operation up and down
- Custom Stainless Steel Anchor Chain Chafe Guard for Foredeck

DECK GENERAL

- Stainless Steel lifelines replaced 2014
- 8 opening ports, 1 opening hatch, 4 deck vents
- Canvas covers for brightwork
- Line clutches on deckhouse for halyards, trimming and main reefing
- Custom built propane locker accessible from aft deck

COCKPIT

- Wheel steering on binnacle with new pedestal guard and helm instrumentation
- Main traveler moved aft to improve cockpit seating and allow main trimming from the helm
- Cockpit table
- Dodger by Thurston Canvas, 2014, used once.
- Teak cockpit grating
- manual bilge pump behind helm

Miscellaneous

- Cape Horn Wind-Vane self steering (in storage)
- Webasto diesel-fired cabin heater 2014
- Fenders & dock lines
- 3 B1 10BC Dry Chemical Fire Extinguishers
- Horn and Bell
- Trident LPG fume detector/alert
- Emergency Tiller
- NOTE: Personal items not included, some of which may appear in photos

Mechanical

Westerbeke 30B Diesel Auxiliary Engine 27 HP with approximately 800 hours (to be confirmed)

26 gallon Stainless Steel fuel tank

Engine Gauges- Tach, Temp, Oil Pressure, Amperage

Hurth 100 2R Transmission

PSS Dripless Stuffing Box

15" 3-Blade Max-Prop 2012

Exclusions

Owner's personal belongings.

Disclaimer

The Company offers the details of this vessel or yacht in good faith but cannot guarantee or warrant the accuracy of this information nor warrant the condition of the vessel. A buyer should instruct his representatives, agents, or his surveyors, to investigate such details as the buyer desires validated. This vessel or yacht is offered subject to prior sale, price change, or withdrawal without notice.

PHOTOS

Mooring1a



Mooring2a



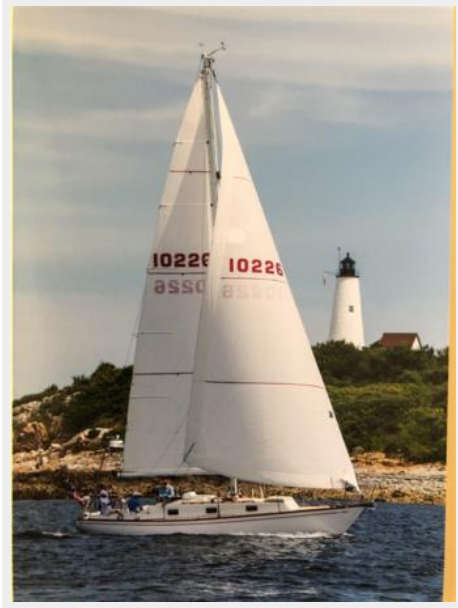
Mooring4a



Racing



IMG_4371



IMG_4369



BeingStored1



BeingStored2



IMG_4378



IMG_4375



IMG_4374



IMG_4379



IMG_4383



IMG_4385



IMG_4386



IMG_4387



IMG_4391



IMG_4399



IMG_4400



IMG_4401



IMG_4441



IMG_4444



IMG_4445



IMG_4446



IMG_4425



IMG_4426



IMG_4428



IMG_4427



IMG_4409



IMG_4411



IMG_4414



IMG_4412



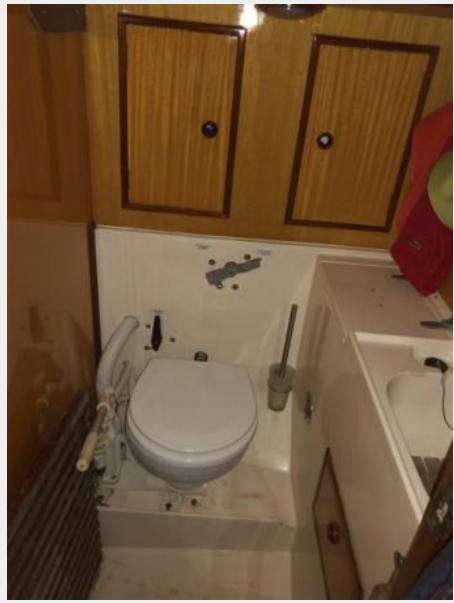
Companionway Steps



Companionway Looking Aft



IMG_4404



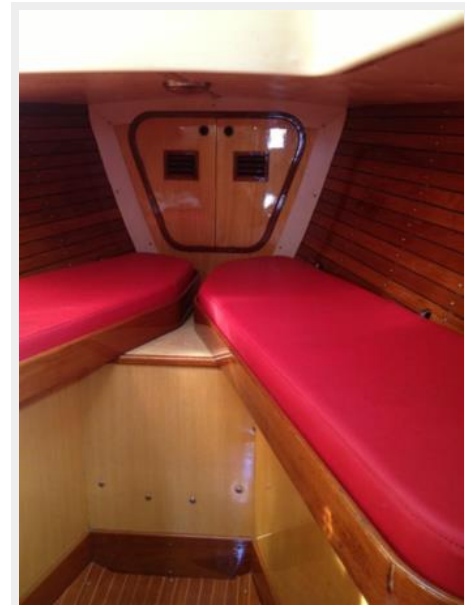
IMG_4407



Forward Hanging Locker



V-Berth



V-Berth2.jpg



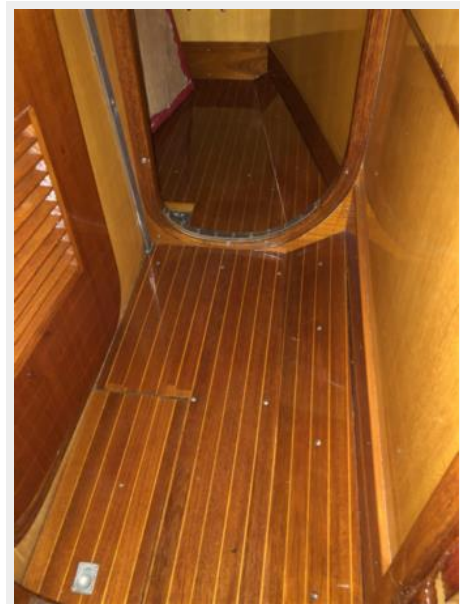
IMG_4408



Looking Forward



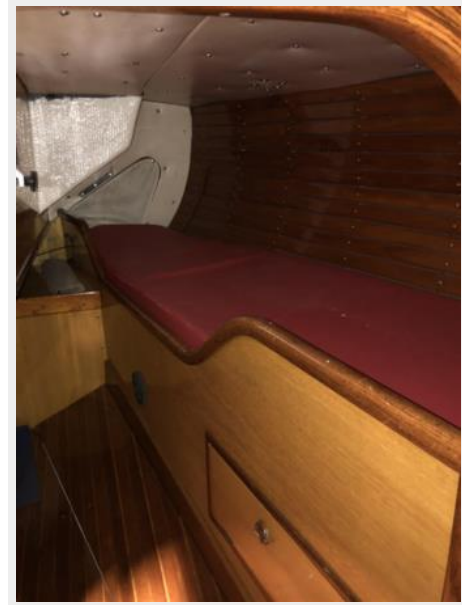
IMG_4431



IMG_4416



IMG_4417



IMG_4421



IMG_4422



IMG_4424



IMG_4437



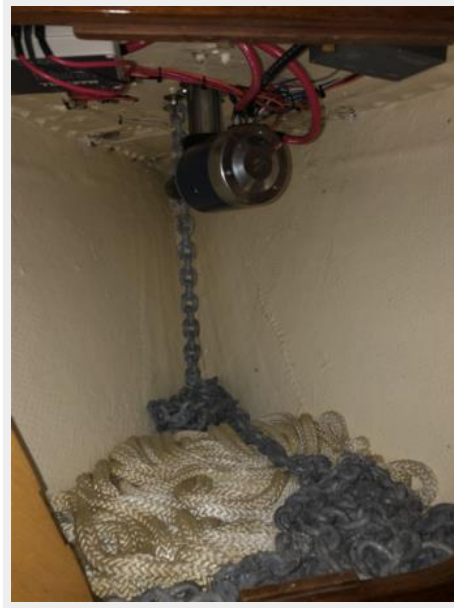
Varnish



IMG_4436



IMG_4501



CONTACTS

Andrey Shestakov, leading yacht broker of the sales department of Shestakov Yacht Sales Inc. Shestakov Yacht Sales Inc., the official representative of the Miami/Fort Lauderdale FL headquarters.

Contact details

Email: andrey@shestakovyachtsales.com

Web: shestakovyachtsales.com/en/

Telephones

USA: +1(954)274-4435

Office hours

Monday – Saturday: **9:00 - 21:00** EDT

Sunday: **closed**

Address



Harbour Towne Marina, 850 NE 3rd St,
STE 213, Dania, FL 33004