

KAWAI — OVERMARINE GROUP



Builder: Overmarine Group

Year Built: 2010

Model: Cruising Yacht

Price: PRICE ON APPLICATION

Location: Italy

LOA: 92' 11" (28.30m)

Beam: 21' 8" (6.60m)

Max Draft: 5' 3" (1.60m)

Cruise Speed: 32 Kts. (37 MPH)

Max Speed: 37 Kts. (43 MPH)

Our experienced yacht broker, Andrey Shestakov, will help you choose and buy a yacht that best suits your needs **KAWAI — Overmarine Group** from our catalogue. Presently, at Shestakov Yacht Sales Inc., we have a wide variety of yachts available on our sale's list. We also work in close contact with all the big yacht manufacturers from all over the world.

If you would like to buy a yacht **KAWAI — Overmarine Group** or would like help answering any questions concerning purchasing, selling or chartering a yacht, please call **+1(954)274-4435**

TABLE OF CONTENTS

TABLE OF CONTENTS	2
SPECIFICATIONS	4
Basic Information	4
Dimensions	4
Speed, Capacities and Weight	4
Accommodations	4
Hull and Deck Information	5
Engine Information	5
PHOTOS	6
10135.1	6
10135.2	6
10135.3	6
10135.4	6
10135.5	6
10135.6	6
10135.7	7
10135.8	7
10135.9	7
10135.10	7
10135.11	7
10135.12	7
10135.13	8
10135.14	8
10135.15	8
profile	8
main	8
lower	8
CONTACTS	9

Contact details	9
Telephones	9
Office hours	9
Address	9

SPECIFICATIONS

Basic Information

Category: Cruising Yacht

Sub Category: Coupe

Model Year: 2010

Year Built: 2010

Country: Italy

Cockpit: Yes

Dimensions

LOA: 92' 11" (28.30m)

Beam: 21' 8" (6.60m)

Max Draft: 5' 3" (1.60m)

Speed, Capacities and Weight

Cruise Speed: 32 Kts. (37 MPH)

Cruise Speed Range: 300

Max Speed: 37 Kts. (43 MPH)

Max Speed Range: 220 Kts.

Gross Tonnage: 80 Pounds

Water Capacity: 369.8408728 Gallons

Holding Tank: 66.043013 Gallons

Fuel Capacity: 2324.7140576 Gallons

Accommodations

Total Cabins: 4

Total Berths: 5

Sleeps: 7

Total Heads: 4

Crew Cabin: 1

Crew Berths: 3

Crew Sleeps: 3

Crew Heads: 1

Hull and Deck Information

Hull Material: GRP

Deck Material: Teak

Hull Configuration: Planing

Hull Color: White

Exterior Designer: Stefano Righini

Engine Information

Engines: 2

Manufacturer: MTU

Model: 16V 2000 M94

Engine Type: Inboard

Fuel Type: Diesel

PHOTOS

10135.1



10135.2



10135.3



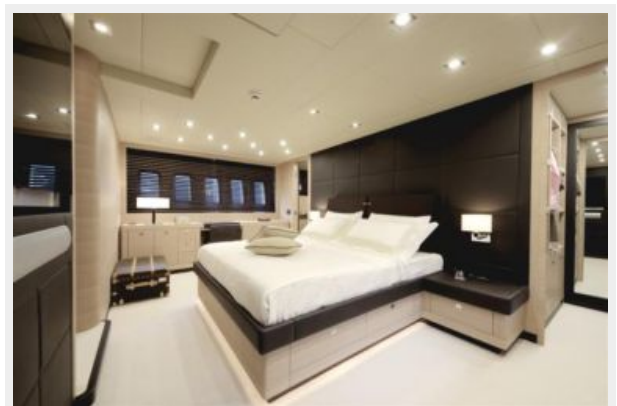
10135.4



10135.5



10135.6



10135.7



10135.8



10135.9



10135.10



10135.11



10135.12



10135.13



10135.14



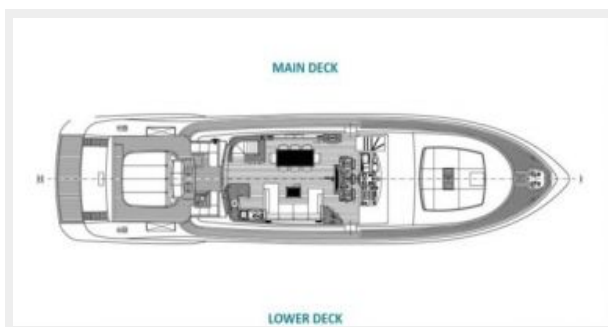
10135.15



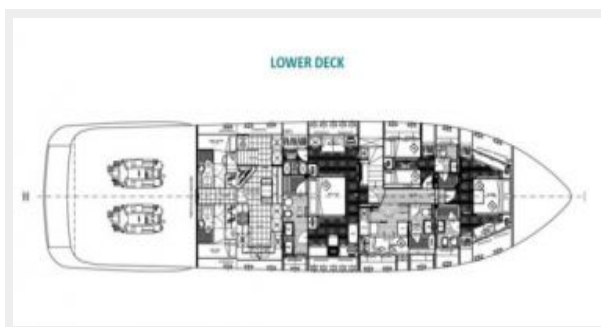
profile



main



lower



CONTACTS

Andrey Shestakov, leading yacht broker of the sales department of Shestakov Yacht Sales Inc. Shestakov Yacht Sales Inc., the official representative of the Miami/Fort Lauderdale FL headquarters.

Contact details

Email: andrey@shestakovyachtsales.com

Web: shestakovyachtsales.com/en/

Telephones

USA: +1(954)274-4435

Office hours

Monday – Saturday: **9:00 - 21:00** EDT

Sunday: **closed**

Address



Harbour Towne Marina, 850 NE 3rd St,
STE 213, Dania, FL 33004