

SILVIA LL — ALBIN



Builder: ALBIN

Year Built: 2006

Model: Motor Yacht

Price: PRICE ON APPLICATION

Location: United States

LOA: 35' 0" (10.67m)

Beam: 12' 4" (3.76m)

Max Draft: 3' 10" (1.17m)

Our experienced yacht broker, Andrey Shestakov, will help you choose and buy a yacht that best suits your needs **Silvia II — ALBIN** from our catalogue. Presently, at Shestakov Yacht Sales Inc., we have a wide variety of yachts available on our sale's list. We also work in close contact with all the big yacht manufacturers from all over the world.

If you would like to buy a yacht **Silvia II — ALBIN** or would like help answering any questions concerning purchasing, selling or chartering a yacht, please call **+1(954)274-4435**

TABLE OF CONTENTS

TABLE OF CONTENTS	2
SPECIFICATIONS	3
Overview	3
Basic Information	3
Dimensions	3
Speed, Capacities and Weight	3
Accommodations	3
Hull and Deck Information	3
Engine Information	4
DETAILED INFORMATION	5
Accommodations	5
Electronics	5
Fishing Equipment and Covers	5
Electrical Equipment	6
Galley	6
Exclusions	6
Disclaimer	6
PHOTOS	7
CONTACTS	12
Contact details	12
Telephones	12
Office hours	12
Address	12

SPECIFICATIONS

Overview

The 35' Albin tournament is a family cruiser /fisherman has roomy accommodations and a large comfortable cockpit . She is solidly built with a fully cored hull , moderated beam ,flared bow and shallow keel there is a single stateroom and convertible dinette with galley down the interior is very bright . Because. Of wrap around caving windows with visibility in all direction

Basic Information

Category: Motor Yacht

Model Year: 2006

Year Built: 2006

Country: United States

Cockpit: Yes

Dimensions

LOA: 35' 0" (10.67m)

Beam: 12' 4" (3.76m)

Max Draft: 3' 10" (1.17m)

MFG Length: 34' 11" (10.64m)

Speed, Capacities and Weight

Displacement: 18500 Pounds

Water Capacity: 160 Gallons

Holding Tank: 40 Gallons

Fuel Capacity: 369 Gallons

Accommodations

Total Cabins: 33133

Hull and Deck Information

Hull Material: Fiberglass

Engine Information

Engines: 2

Manufacturer: Yanmar

Model: 61Y STP

Engine Type: Inboard

Fuel Type: Diesel

DETAILED INFORMATION

Accommodations

She has very comfortable accommodations with a roomy, self bailing cockpit that appeals to anglers and families alike.

- Oak interior trim
- Teak and holly sole
- Transom door
- Two in-deck fish boxes
- Bow pulpit
- Sun screens
- Two double berths including a convertible couch in the salon
- Large head with hot water shower
- Vacuflush head
- Flybridge configured with helm aft for fishing
- Ice maker on cockpit

Electronics

- Garmin Gps 3010
- Garmin Radar
- Low range GPS Depthsounder structure scan down and sides
- Furuno R.D 30
- Icom VHF Radio
- Electronic Micro Commander, two station, engine controls

- Two Simrad IS40 multi instruments
- Fusion stereo
- Raymarine ST8002 Autopilots with handheld remote
- Cockpit, flybridge, salon and main berth speakers
- TV / DVD in Main Berth
- KVA Satellite TV
- Floscan digital flowmeters with fuel usage
- Ritchie compasses
- Bow thruster
- Anchor and bow thruster controls at both lower and upper helms

Fishing Equipment and Covers

- Outriggers

- Bait tank in transom
- 8 pole rocket launchers
- 8 drawer tackle center with a top opening and fresh water sink
- New flybridge covers for helm and captain's chair
- Aluminum 1/2 tower
- San Juan Style sunshade cockpit

Electrical Equipment

- Northern Lights generator
- Large battery banks with (3) 8D AGM; (4) 6 volt sealed; (1) Group 27 wet cell
- Shore power inlet, 30 amp 125 volt
- Xantrex Freedom 3000 watt inverter
- Bennett trim tabs
- Muir vertical windlass with Bruce anchor, 5/16" chain and 1/2" rope

Galley

- Isotherm refrigerator
- Stainless steel sink
- Force 10 3-burner stove/oven
- Tappan microwave oven
- Toaster oven
- Safety Emergency Life Raft

Exclusions

Owner's personal belongings.

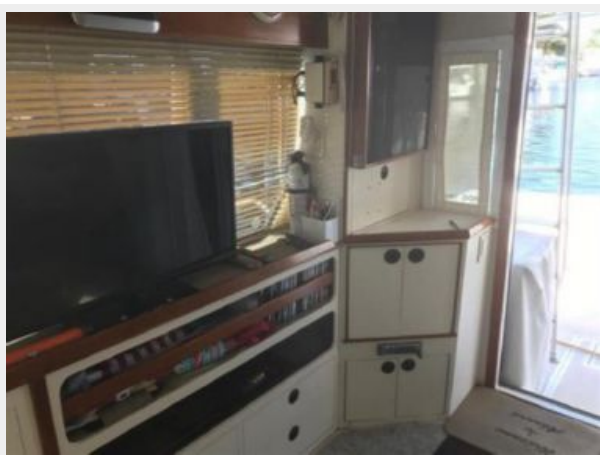
Disclaimer

The Company offers the details of this vessel or yacht in good faith but cannot guarantee or warrant the accuracy of this information nor warrant the condition of the vessel. A buyer should instruct his representatives, agents, or his surveyors, to investigate such details as the buyer desires validated. This vessel or yacht is offered subject to prior sale, price change, or withdrawal without notice.

PHOTOS











CONTACTS

Andrey Shestakov, leading yacht broker of the sales department of Shestakov Yacht Sales Inc. Shestakov Yacht Sales Inc., the official representative of the Miami/Fort Lauderdale FL headquarters.

Contact details

Email: andrey@shestakovyachtsales.com

Web: shestakovyachtsales.com/en/

Telephones

USA: +1(954)274-4435

Office hours

Monday – Saturday: **9:00 - 21:00** EDT

Sunday: **closed**

Address



Harbour Towne Marina, 850 NE 3rd St,
STE 213, Dania, FL 33004