

## PRESTIGE 550 — PRESTIGE



**Builder:** PRESTIGE

**Year Built:** 2016

**Model:** Motor Yacht

**Price:** PRICE ON APPLICATION

**Location:** United States

**LOA:** 58' 9" (17.91m)

**Beam:** 15' 8" (4.78m)

**Max Draft:** 3' 10" (1.17m)

**Cruise Speed:** 24 Kts. (28 MPH)

**Max Speed:** 30 Kts. (35 MPH)

Our experienced yacht broker, Andrey Shestakov, will help you choose and buy a yacht that best suits your needs **Prestige 550 — PRESTIGE** from our catalogue. Presently, at Shestakov Yacht Sales Inc., we have a wide variety of yachts available on our sale's list. We also work in close contact with all the big yacht manufacturers from all over the world.

If you would like to buy a yacht **Prestige 550 — PRESTIGE** or would like help answering any questions concerning purchasing, selling or chartering a yacht, please call **+1(954)274-4435**

# TABLE OF CONTENTS

TABLE OF CONTENTS	2
SPECIFICATIONS	5
Overview	5
Basic Information	5
Dimensions	5
Speed, Capacities and Weight	6
Accommodations	6
Hull and Deck Information	6
Engine Information	6
DETAILED INFORMATION	7
Prestige 55S Detailed Options	7
AFT Galley open to the back	8
Salon	8
Master Stateroom large closet and spacious head	8
Accommodations	9
Cockpit and Hydraulic platform	9
Bow seating with Bow canopy and large Sun shade	9
Engine Room and Equipment	10
Disclaimer	10
Exclusions	10
Disclaimer	10
PHOTOS	11
3	11
4	11
5	11
6	11
7	11
8	11

9	12
10	12
11	12
12	12
13	13
14	13
15	13
16	13
17	13
18	13
20	14
19	14
21	14
22	14
23	14
24	14
26	15
25	15
27	15
28	15
29	15
30	15
31	16
32	16
33	16
34	16
35	16
36	16
37	17

38	17
40	17
39	17
Russ Prestige	17
CONTACTS	18
Contact details	18
Telephones	18
Office hours	18
Address	18

# SPECIFICATIONS

---

## Overview

---

**Very clean and well cared for yacht. This yachts shows exceptionally well and will not disappoint.**

Her impressive Bahama Blue paint job with white hull band She has many custom features buyers are looking for in todays yacht.

First the Galley is between the aft deck and the salon which allows for you to entertain and have a flow from aft deck to salon. This 55S design also has an upper deck sport deck for enjoying the outdoors and many coupes or expresses' lack this feature and are limited to the bow only f.or entertaining.

Haulout service in November 2019 including:

- **Bottom paint**
- **Prop speed**
- **Compound and full wax**
- **All zincs replace**
- **New window exterior covers**
- **Full service to pods March 2020**
  
- **Detailed teak**
- **Full 100 hour engine service and generator service 2020 by Cummin's dealer.**
- **Serviced Air conditioning - Tropical 84,000 BTU**
- **Galvanic Isolater**

## Basic Information

---

**Category:** Motor Yacht

**Model Year:** 2016

**Year Built:** 2016

**Country:** United States

## Dimensions

---

**LOA:** 58' 9" (17.91m)

**Beam:** 15' 8" (4.78m)

**Max Draft:** 3' 10" (1.17m)

---

## Speed, Capacities and Weight

---

**Cruise Speed:** 24 Kts. (28 MPH)

**Max Speed:** 30 Kts. (35 MPH)

**Water Capacity:** 211 Gallons

**Holding Tank:** 31.7 Gallons

**Fuel Capacity:** 581 Gallons

---

## Accommodations

---

**Total Cabins:** 3

---

## Hull and Deck Information

---

**Hull Material:** Fiberglass

---

## Engine Information

---

**Engines:** 1

**Manufacturer:** Cummins

---

# DETAILED INFORMATION

---

---

## Prestige 55S Detailed Options

---

The **PRESTIGE 550 S** expands on the concept of the coupé motor yacht that made the PRESTIGE a success.

This yacht has an exceptional interior layout offering a large living space on a single level, a vast sliding glass door opening onto the cockpit and a large opening glass sunroof, she is extremely bright and affords an excellent view of the sea. The **PRESTIGE 550 S** integrates the concept of the private owner's cabin, which is unique in its category.

WHY This 55S the best value and designed layout in the Express market?

- **Painted Hull Bahama Blue**
- **Private Access to Master and separate guest quarters and (crew quarters separate to all)**
- **Three separate spaces to enjoy the outdoors**
- **Aft docking**
- **Aft Galley**
- **Bow thruster**
- **Hydraulic platform**
- **Onan 21.5 Kw with 1006 hours and serviced**
- **Equipped with easy handling CUMMINS Zeus pods with Skyhook, this exceptional yacht has and ease of handling.**
- **Aft mooring electric windlass (starboard side)**
- **Engine room camera**
- **Sky Lounge sun bed cushions with sun shade**
- **15K\$ Internet and Wifi and LTE wireless system**
- **Larger optional Mercury engine vessel view**
- **Apple TV system in the Salon and Master Suite upgrade**
- **New cabinetry in the galley with a double drawer freezer**
- **New custom cabinetry next to the ice maker**
- **New storage cabinetry at helm station**
- **Porthole Mosquito Screen**
- **Extended Sun bed in the cockpit**
- **Vogue 34 Carpet - Salon, Cabins & Entrance**
- **Additional storage in the engine room**
- **Additional fridge freezer in the Master Suite**
- **100 Gallons/hours Desalinizer/ watermaker 2018 less than 20 hours**
- **(4) Underwater lights**
- **(2) Safe**
- **Upgraded Inverter**

---

## AFT Galley open to the back

---

The newest trend in boat building is location of the galley aft so it can be used while enjoying the aft deck and sunbridge. Opposite the galley is additional storage and counter space. A little further forward opposite the galley is the private staircase to the full beam master stateroom. The galley location is one of the most important places on the yacht and this galley offers access from the Salon, the Aft deck, sport bridge and Master stateroom.

- Custom upgraded island
- Three burner ceramic cook-top
- Microwave/convection oven
- Refrigerator and freezer,
- Extra double draw refrigeration and separate icemaker
- Stainless steel sink,
- Generous storage in cabinets above and below the counter space.
- Up a short step brings you to the main seating area with a couch to starboard and a long L shaped couch/settee to port including the dining table.
- The dining table is expandable from a cocktail table to a full dining table. There is also a matching upholstered chair forward effectively making this a U shaped seating area, plus two upholstered round seats that can provide additional seating.

---

## Salon

---

The Prestige 550 has a large open and airy Main salon featuring large continuous windows from the aft glass opening bulkhead to the forward windshield and full lower helm station. The decor is impressive with white Leather Devon sofas and has a updated feel and modern feel. The Sunroof opens up and is amazing. This allows you to feel the outdoors while cruising in comfort. The windows both port and starboard open at a push of a button provide fresh air and cross ventilation.

The aft bulkhead is comprised of three sliding glass doors that convert the inside to the outside. The aft situated galley is perfectly located to be able to serve directly to the cockpit and keep the chef in touch with the family and or guests.

---

## Master Stateroom large closet and spacious head

---

From the main salon access is provided to the master stateroom by a private staircase. walk down there is a place to put your favorite photos or decoration.

The master is full beam and very spacious. There are large rectangular port-lights/windows in the hull side providing this mid-ship stateroom with great views of the outside surroundings. There are circular opening ports in each window providing fresh air and cross ventilation when conditions are suitable. There is a desk/makeup area with opposing seats to port, night stands at



either side of the bed, plenty of storage in cabinets, drawers, and a large walk in closet. There is also a 32" flat screen TV on the forward bulkhead.

The en-suite head has easy care wood floors, a stall shower with a teak grate and glass door, exhaust fan, electric head, ceramic sink, mirrored cabinets over and drawers and storage under the counter.

The Closet is located to Port and is spacious with plenty of space. This was well designed and will please anyone looking for closet space.

---

## Accommodations

Accessed by a staircase down from the forward salon area. The large VIP stateroom is forward and has a walk around pedestal bed, 23" flat screen TV, overhead hatch for natural light and ventilation, and large side windows as well. There are reading lights on either side of the headboard. Overhead LED lights and a continuous lighting band along a ceiling feature provide plenty of light when desired. Storage is provided in a good sized hanging locker and drawers outboard on either side of the bed. There is a private access door to the guest head which has wood floors, ceramic sink, electric head, and a walk in stall shower with a glass door. The double guest stateroom is off the central landing on the port side and has two lower berths, a large rectangular window with an opening port insert for fresh air, and a large hanging locker.

---

## Cockpit and Hydraulic platform

The 550 has a large cockpit making it a great area for lounging, entertaining or dining. There is a large bench seat with a teak dining table and there are two optional teak chairs for 5-6 to dine here.

- There is an optional docking station to starboard with the Zeus joystick control and the bowthruster control for maneuvering in close quarters.
- On the starboard side there is a walkway and steps down to the hydraulic swim platform. Access to the Captain's cabin is under the bench seat.
- Aft mooring electric windlass, hot and cold pressure shower, protective cushion covers for bench seat and sunpad forward as well as for cushions.
- Ladder to access the Sunbridge

---

## Bow seating with Bow canopy and large Sun shade

The bow access from either side by good walkways with railings and good hand rails to make going forward safe and comfortable. There is a large sunpad forward for relaxing,

- **Electric anchor windlass, and Drink holders**

- **Canopy sunshade**
- **Full sun Shade**
- **Seats adjust**

---

## **Engine Room and Equipment**

---

**This is truly one of the cleanest engines rooms you will see on a 4 year old vessel. Powered by Twin QSC 600 Cummins with 605 hours. Services up to date. One transmission replaced.**

### **Equipment Includes**

- 21.5 KW Generator,
- Engine Room camera
- Engine room lighting
- Bilge Pumps With Alarm,
- Carbon Monoxide Detector,
- Automatic Fire Extinguisher,
- Battery Charger
- Inverter

---

## **Disclaimer**

---

The Company offers the details of this vessel in good faith but cannot guarantee or warrant the accuracy of this information nor warrant the condition of the vessel. A buyer should instruct his agents, or his surveyors, to investigate such details as the buyer desires validated. Hours listed may vary from actual hours due to recent use. Purchaser is encouraged to verify hours prior to purchase. This vessel is offered subject to prior sale, price change, or withdrawal without notice.

---

## **Exclusions**

---

Owner's personal belongings.

---

## **Disclaimer**

---

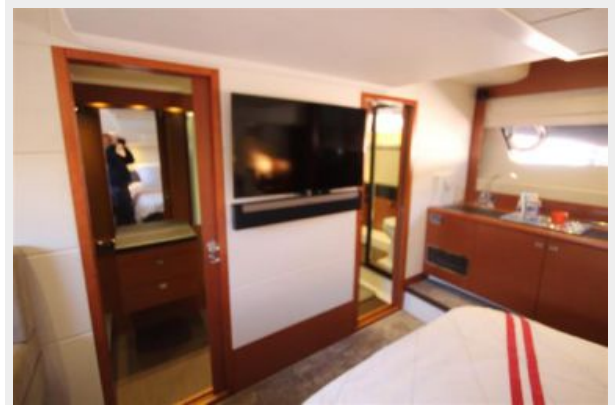
The Company offers the details of this vessel or yacht in good faith but cannot guarantee or warrant the accuracy of this information nor warrant the condition of the vessel. A buyer should instruct his representatives, agents, or his surveyors, to investigate such details as the buyer desires validated. This vessel or yacht is offered subject to prior sale, price change, or withdrawal without notice.

# PHOTOS

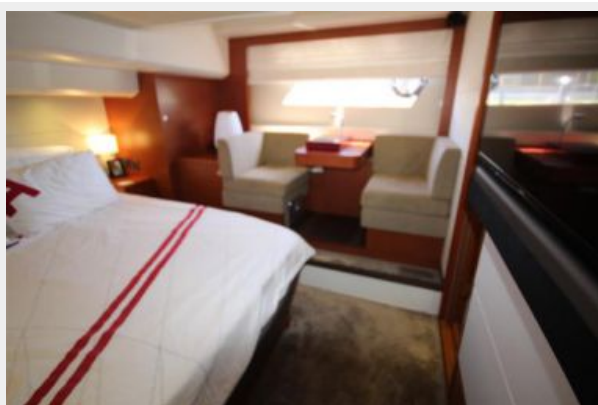
3



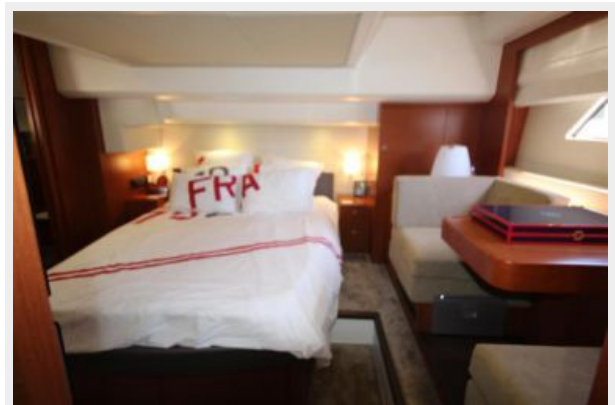
4



5



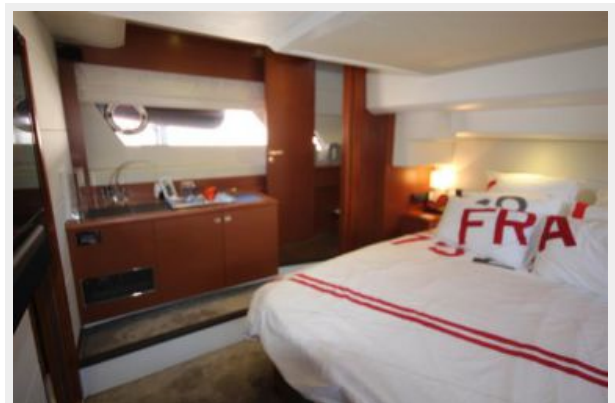
6



7



8



9



10



11



12





13



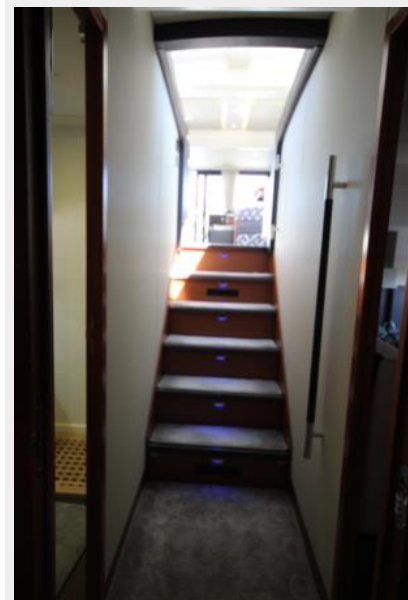
14



15



16



17



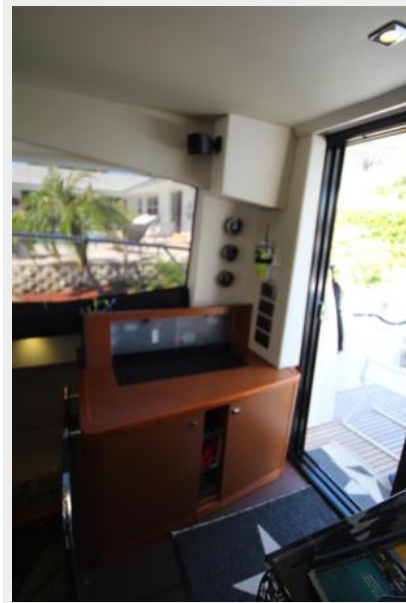
18



19



20



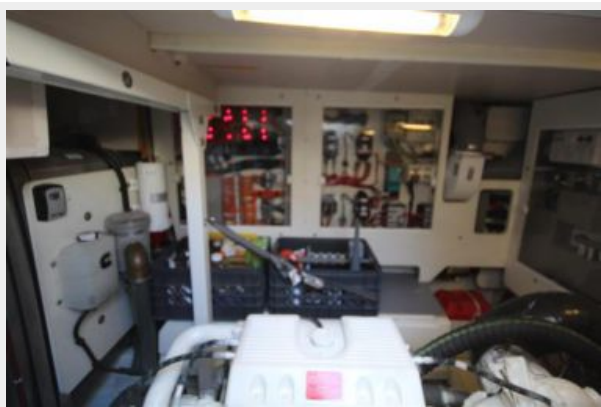
21



22



23



24





25



26



27



28



29



30



31



32



33



34



35



36





37



38



39



40



## Russ Prestige



# CONTACTS

---

Andrey Shestakov, leading yacht broker of the sales department of Shestakov Yacht Sales Inc. Shestakov Yacht Sales Inc., the official representative of the Miami/Fort Lauderdale FL headquarters.

## Contact details

---

Email: **andrey@shestakovyachtsales.com**

Web: [shestakovyachtsales.com/en/](http://shestakovyachtsales.com/en/)

## Telephones

---

USA: **+1(954)274-4435**

## Office hours

---

Monday – Saturday: **9:00 - 21:00 EDT**

Sunday: **closed**

## Address

---



Harbour Towne Marina, 850 NE 3rd St,  
STE 213, Dania, FL 33004