

LOS CONDORES — AZIMUT



Судостроитель: [AZIMUT](#)

Год постройки: 2019

Модель: Моторная яхта

Цена: ЦЕНА ЯХТЫ ПО ЗАПРОСУ

Местонахождение: United States

Длина общая: 60' 0" (18.29m)

Ширина: 16' 7" (5.05m)

Макс. осадка: 4' 9" (1.45m)

Крейс. скорость: 25 Kts. (29 MPH)

Макс. скорость: 30 Kts. (35 MPH)

Купить **LOS CONDORES — AZIMUT** а также выбрать подходящую вам яхту из нашего каталога яхт вам поможет опытный яхтенный брокер Андрей Шестаков. На сегодняшний день компания **Shestakov Yacht Sales Inc.** имеет большое количество яхт в собственном списке продаж, а также тесно сотрудничает со всеми крупными яхтенными производителями по всему миру.

Для того чтобы купить яхту **LOS CONDORES — AZIMUT** а также проконсультироваться по любому вопросу связанному с покупкой, продажей, чартером яхт позвоните по телефону **+7(918)465-66-44**.

ОГЛАВЛЕНИЕ

ОГЛАВЛЕНИЕ	2
ХАРАКТЕРИСТИКИ	4
Обзор	4
Основная информация	4
Размеры	5
Скорость, вместимость и масса	5
Размещение	5
Корпус и палуба	5
Информация о двигателе	5
ПОДРОБНОЕ ОПИСАНИЕ	6
Upgrades	6
Electronics	8
Inside Equipment	8
Electrical Equipment	8
Outside Equipment	8
FLYBRIDGE	8
Engine Room	9
Swim Platform	9
Salon	9
Galley	10
Lower Helm	10
Master	10
Исключения	10
Отказ от ответственности	11
ФОТОГРАФИИ	12
КОНТАКТЫ	36
Контактная информация	36
Телефоны	36

Время работы	36
Адрес	36

ХАРАКТЕРИСТИКИ

Обзор

Seakeeper / Only 206hrs / Like new condition

Completed in 2021:

- **EXPRESS XT 800 watermaker with remote installed**
- **AIS + FLIR installed**
- **Dual SIM cell access-point, WiFi Extender, and Antennas**
- **Seakeeper annual Maintenance**
- **Bottom Paint + Engine and Generator Service completed last January**
- **Ceramic Coating on the entire vessel in May**

LOS CONDORES is a 2019 Azimut 60 Flybridge built with entertaining and comfort in mind. She offers elegance, space, agility, and natural light flooding through large salon windows. She has ample seating throughout the boat that will allow you to enjoy meals and relaxation in a variety of locations.

The owner of LOS CONDORES has decided to transition into another yacht. He bought the 60' to enjoy the waters off of south Florida and the Bahamas. The seakeeper gyro provides the comfort for nights at anchor and the 25knot cruising speed ensures a quick trip to the desired destination. The three stateroom layout offers comfort for the entire family and if needed the fourth cabin back aft allows for additional guests or for a Crew of two.

LOS CONDORES is in like-new condition with extremely low engine hours and is ready to be sold!

The Williams Tender is not included in the sale of the vessel.

Основная информация

Тип судна: Моторная яхта

Подкатегория: Flybridge

Модельный год: 2019

Год постройки: 2019

Страна: United States

Открытая палуба мостика: Да

Размеры

Длина общая: 60' 0" (18.29m)

Ширина: 16' 7" (5.05m)

Макс. осадка: 4' 9" (1.45m)

Скорость, вместимость и масса

Крейс. скорость: 25 Kts. (29 MPH)

Макс. скорость: 30 Kts. (35 MPH)

Водоизмещение: 79366 Pounds

Вместимость воды: 198 Gallons

Вместимость сточного бака: 46 Gallons

Объем топливного бака: 739 Gallons

Размещение

Всего кают: 3

Всего ком. состава: 4

Каюты экипажа: 1

Корпус и палуба

Материал корпуса: Fiberglass

Информация о двигателе

Двигатели: 2

Производитель: Volvo

Модель: Penta D13

Тип двигателя: Inboard

Тип топлива: Diesel

ПОДРОБНОЕ ОПИСАНИЕ

Upgrades

Additional Seakeeper control station on fly

Audio Video package

Bench on bow conv. with sunbathing cushions w/ teak table (Grey Olympus Venus)

Cockpit furniture w/refrigerator

Co-pilot seat on fly

Co-pilot seat In main helm

Crew Cabin with One Bed (w/ Storage locker) External cushions In bayline grey

Fabric curtains In cabins

Glendenning cable master

Hard Top

Hi-Lo openable dining table

Icemaker on Fly

Mosquito nets for portholes

Raymarine Platinum Package

Raymarine video camera

Seakeeper Stabilizer

Set of linen- crew cabin(one bed)

Set of linen for cabins

Stern thruster

Teak on fly brldge decking

Teak on side decks

Teak Stern steps

Telescopic gangway

Toilet with bidet faucet feature

Two floodlights installed on aft flybridge

Washer/dryer

Wooden floor in dinette

Wooden floor in salon

ADVANCED PACK:

Add'l control for electric searchlight Chain counter control at main helm

Double Racor filters for main engines

Electric Winches

Joystick Marex easy docking

Miele appliances (microwave combo and cooktop

Spare conduits connecting engine room/ wheelhouse/radar arch)

Water maker predisposition

Lounging on aft fly, 3 benches w/ teak coffee table w/ Olympus Venus Insert

Vanity Furniture in master cabin

Two Underwater lights on transom

Soft Top on bow w/ removable poles

Add'l set of zincs

Scenic lights on main & lower deck

Cockpit table In teak w/ Olimp[us Venus Insert Set of Towels for one person(each)

Cockpit Chair (Mod Oskar)

Safe in master cabin

Wine cooler In galley

Coffee table In salon

Electric Awning in Cockpit

Moon carpet on stairs

Moon carpet on cabin floors

Moon carpet on cabins raised parts

Peace of Mind Warranty Compass on Fly

Electronics

DVD player TV set Depth sounder VCR Cockpit speakers Navigation center Compass CD player Plotter Log-speedometer Radar Autopilot VHF Radio GPS Radar Detector

Inside Equipment

Bow thruster Stern thruster Oven Marine head Electric bilge pump Sea water pump Washing machine Fresh water maker Microwave oven Deep freezer Air conditioning Refrigerator Electric head Dishwasher Battery charger Heating Hot water Manual bilge pump

Electrical Equipment

Shore power inlet Generator Inverter

Outside Equipment

Teak side decks Cockpit shower Wind generator Hydraulic gangway Swimming ladder Cockpit table Cockpit cushions Teak cockpit Gangway

FLYBRIDGE

With a newly redesigned layout, the flybridge is extremely spacious and it extends further aft than you may expect.

This area embodies all the elements of an Italian luxury product: long, simple lines that create areas for social interaction and ultimately to celebrate life with your family and guests on board.

The Flybridge is divided into 3 areas:

1. helm station.

With pilot and copilot seats, she offers her owner the ultimate pleasure in piloting, while flying above the water.

2. sun lounge to starboard.

This is just a few feet away from a grilling station. There's also an ice maker and a sink conveniently located in front of the dinette.

3. fully furnished seating area.

All of these seating feature foam cushions that are upholstered in a fabric that is super soft to the touch. Additionally, it's also easy to maintain... even in a marine environment.

Engine Room

Underfoot is the engine room access hatch. Down here is where we find a pair of VOLVO PENTA D-13 Diesel Engines each generating 900 horsepower.

The boat performed magnificently with a top speed in excess of 31 knots. Her cruise speed is 28 knots.

In terms of range, you can expect to get around 300 Nautical Miles every time you fill her up, and run her at around 23 Knots.

Swim Platform

Just a few steps down from the aft deck is the swim hydraulic teak platform. This is your ticket to enjoying the water anytime you want.

This is also where her tender is stored when underway. The hydraulic swim platform holds a tender of 3.25 mt.

There's also some secondary storage space- sufficient enough for a sea bob, fenders or diving gear.

Salon

The salon, that was designed by Achille Salvagni one of Interior Digests top 100 international designers.

The design philosophy is based on the theme of timeless calm and elegance- which also puts an emphasis on a contemporary look.

For materials, here we will see primarily brushed oak embellished with brass and stainless steel accents. These details are timeless and rich.

The salon offers your guests a great view of the their surroundings.

Forward of the seating area is the dinette that offers an unprecedented and unimpeded view of the sea through full high glazing over cutaway gunwales. This area finished (furnished) with a table that can be lowered to become a coffee table can be used both for dining and as a second lounge.

Galley

Across from the formal dining space is her striking galley. With plenty of counter top space and storage, this galley is a great place to prepare and cook your meals.

All of the appliances are made by Miele... a top brand producer with some of the most reliable appliances available on yachts today.

The galley is fully equipped with freezer, refrigerator, double sink and even a wine cooler.

Lower Helm

Forward of the galley is the lower helm.

This state of the art helm is equipped with the latest equipment available from the Azimut innovation lab. These systems insure optimal yacht management solutions and features like active trim control which automatically adjust the trim of the yacht while underway.

Not only does this give you one less thing to think about, but it also guarantees the lowest possible fuel consumption.

Electronic power steering allows you to customize the helm sensitivity by regulating the number of wheel turns and the force required. This also increases safety because the maximum steering angle is reduced at full throttle and increased at slower speeds.

Master

Here in the midship owners suite, the styling borrows a home-y feel.

All of the furniture fits this yachts contemporary stylings perfectly.

In addition to a queen berth, there is a beautiful vanity.

Like the rest of the staterooms, the master also has a private en suite.

Исключения

При продаже яхты исключаются личные вещи владельца.

Отказ от ответственности

Компания предоставляет описание судна или яхты добросовестно, но не может гарантировать точность этой информации, а также не ручается за техническое состояние. Покупатель должен проинструктировать своих агентов или оценщиков исследовать представленную информацию более подробно, по собственному желанию. Продажа судна или яхты, изменение цены или снятие с продажи будет происходить без предварительного уведомления.

ФОТОГРАФИИ









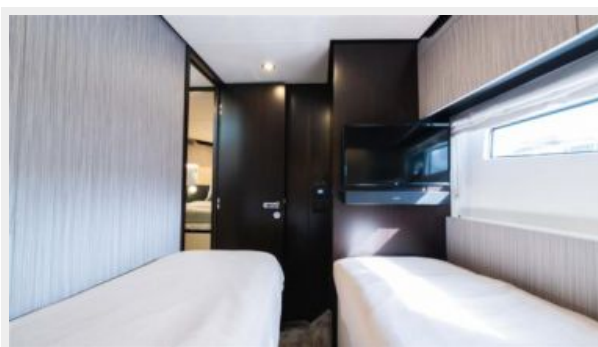
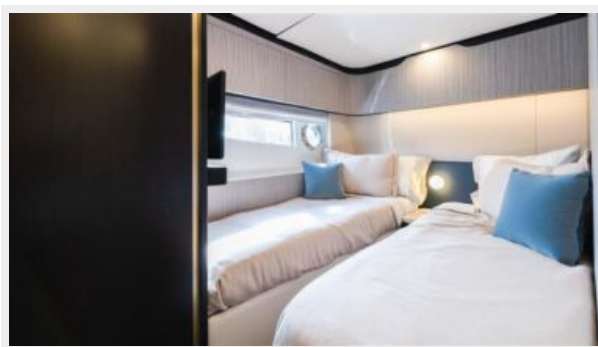




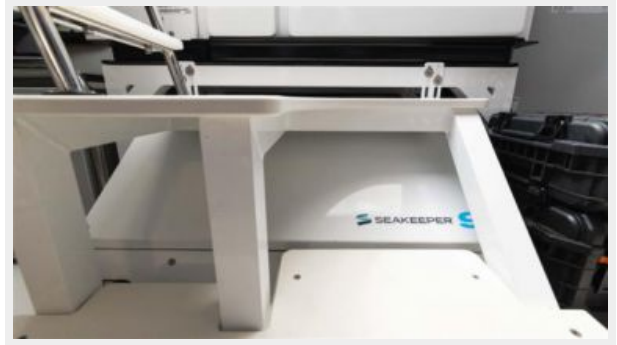




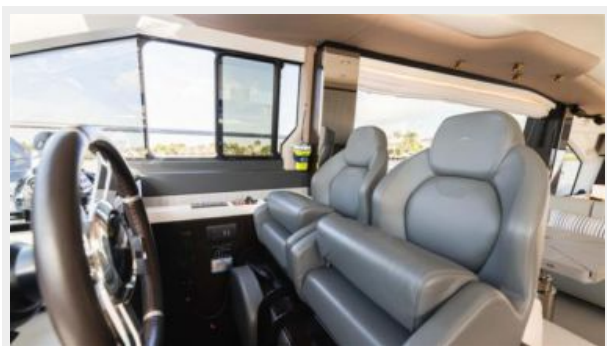
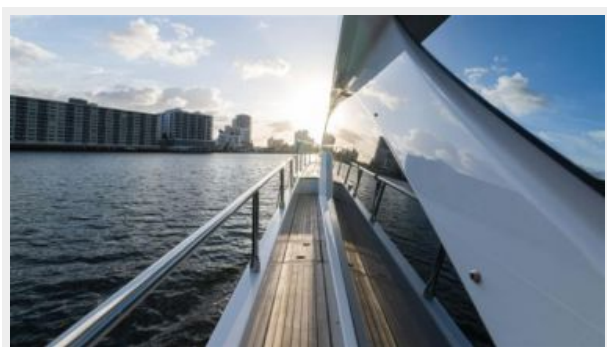












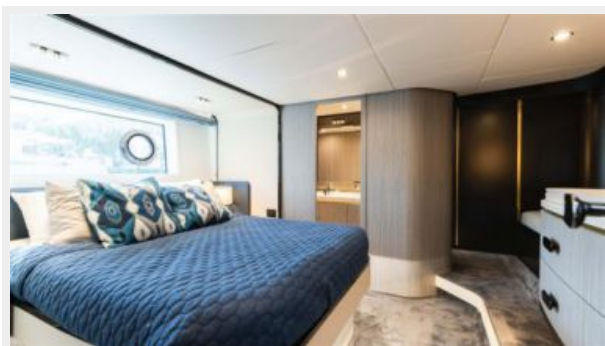


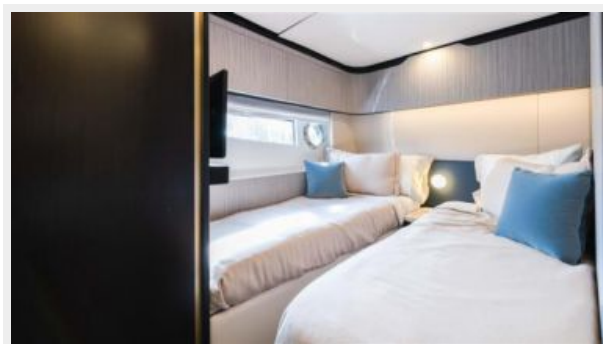


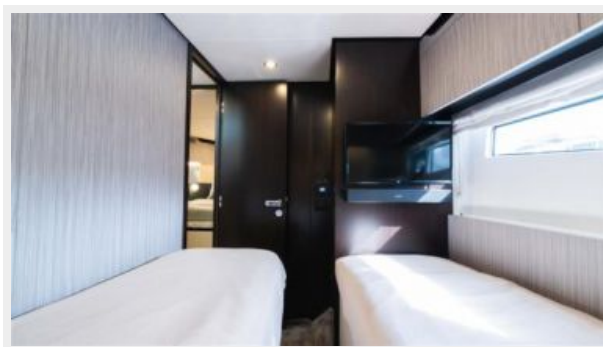


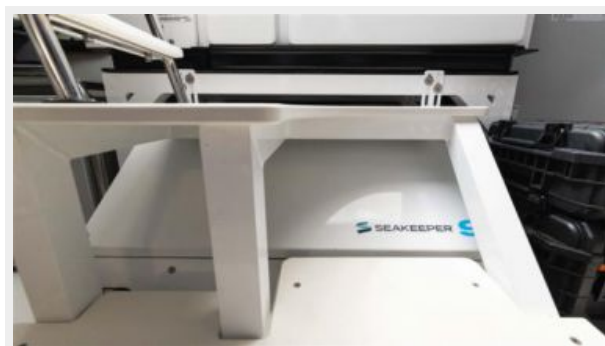


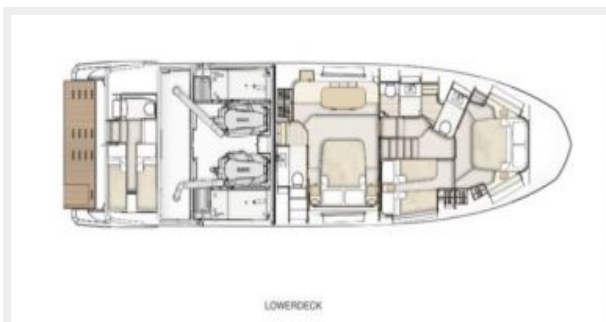












КОНТАКТЫ

Андрей Шестаков (Andrey Shestakov) – ведущий яхтенный брокер отдела продаж яхт и судов компании Shestakov Yacht Sales Inc. Официальный представитель Shestakov Yacht Sales Inc. для русскоговорящих клиентов в центральном офисе компании в Майами/Форт Лодердейл/Флорида/США.

Контактная информация

Email: andrey@shestakovyachtsales.com

Web: shestakovyachtsales.com

Телефоны

Краснодарский край: **+7(918)465-66-44**

США, Майами, Флорида: **+1(954)274-4435**

Время работы

Понедельник – Суббота: **9:00 - 21:00**
EDT

Воскресенье: **Закрето**

Адрес



Harbour Towne Marina, 850 NE 3rd St,
STE 213, Dania, FL 33004