

## SERENITY II — CARVER



**Судостроитель:** CARVER

**Год постройки:** 2001

**Модель:** Моторная яхта

**Цена:** ЦЕНА ЯХТЫ ПО ЗАПРОСУ

**Местонахождение:** United States

**Длина общая:** 44' 0" (13.41m)

**Ширина:** 13' 11" (4.24m)

**Макс. осадка:** 3' 6" (1.07m)

Купить **SERENITY II — CARVER** а также выбрать подходящую вам яхту из нашего каталога яхт вам поможет опытный яхтенный брокер Андрей Шестаков. На сегодняшний день компания **Shestakov Yacht Sales Inc.** имеет большое количество яхт в собственном списке продаж, а также тесно сотрудничает со всеми крупными яхтенными производителями по всему миру.

Для того чтобы купить яхту **SERENITY II — CARVER** а также проконсультироваться по любому вопросу связанному с покупкой, продажей, чартером яхт позвоните по телефону **+7(918)465-66-44**.

# ОГЛАВЛЕНИЕ

ОГЛАВЛЕНИЕ	2
ХАРАКТЕРИСТИКИ	6
Обзор	6
Основная информация	7
Размеры	7
Скорость, вместимость и масса	7
Размещение	7
Корпус и палуба	7
Информация о двигателе	8
ПОДРОБНОЕ ОПИСАНИЕ	9
Overview	9
Исключения	16
Отказ от ответственности	17
ФОТОГРАФИИ	18
2	18
3	18
4	18
5	18
6	18
7	18
8	19
9	19
10	19
11	19
12	19
13	19
14	20
15	20

16	20
17	20
18	20
19	20
20	21
21	21
22	21
23	21
24	21
25	21
26	22
27	22
28	22
29	22
30	22
31	22
32	23
33	23
34	23
35	23
36	23
37	23
38	24
39	24
40	24
41	24
42	24
43	24
44	25

---

45	25
46	25
47	25
48	25
49	25
50	26
51	26
52	26
53	26
54	26
55	26
56	27
57	27
58	27
59	27
60	27
61	27
62	28
63	28
64	28
65	28
66	28
67	28
68	29
69	29
70	29
71	29
72	29
73	29

---

---

КОНТАКТЫ	30
-----	-----
Контактная информация	30
-----	-----
Телефоны	30
-----	-----
Время работы	30
-----	-----
Адрес	30
-----	-----

# ХАРАКТЕРИСТИКИ

## Обзор

There's a reason Wisconsin-based and built Carver Yachts have been around nearly 70 years since the 1950's. We get why they were the largest production yacht builder in the world through the 1980's and 1990's. They just know how to build a great boat. This 2001 Carver 444 Aft Cabin Motor Yacht may well be the best-preserved yacht or her kind available today. Lovingly cared for and thoughtfully updated, SERENITY II will amaze you everywhere you look. Check out our suite of high-resolution photos just taken this fall. She delights everywhere you turn. The pictures barely do her justice. You just won't find more accommodating exterior and interior spaces in any other yacht in her class. Designed for maximum enjoyment for a cruising couple and guests, the Carver 444 has party and lounge spaces everywhere you turn. There's plenty of seating up top around the flybridge helm. Just below, the elevated rear deck has room for four chairs and tables. If you prefer to be closer to the water, the aft cockpit and swim platform provide more lounge and utility space. SERENITY II's light-filled main salon and galley are the centerpiece of the yacht surrounded by rich woods, ultra-leather upholstery, and plush carpeting and hardwoods. The interior rounds out with two nearly equally inviting en-suite berths with queen-sized walk-around beds, ample storage, and large functional heads w/showers. SERENITY II boasts some great features and thoughtful updates. Here are a few highlights (plus many more noted throughout the listing):

- 330HP Cummins Diesel engines with only 1003 original hours
- Scheduled 1000 hour routine maintenance performed in 2018
- New engine heat exchangers
- New oil pan heaters for cool season running
- Rudders/shafts/skegs/props all serviced in 2019
- Kohler 0kW genset with only 843 hours
- New electronics including the latest Garmin plotter, VHF radio, Bluetooth stereo system
- Updated AC systems
- Updates interior LED lighting
- Updated head systems
- New induction 3-burner cooktop in galley
- Refreshed soft goods throughout interior
- New entertainment systems
- Hull/topsides waxed and buffed every four months since purchased
- New EZ2C enclosure panels at flybridge and aft deck

Enjoy this listing and come to see this yacht! Of all the choices you have out there, SERENITY II will surely top your list. She's stunning in every way.

## Основная информация

Тип судна: Моторная яхта

Подкатегория: Кубрик

Модельный год: 2001

Год постройки: 2001

Страна: United States

Кубрик: Да

## Размеры

Длина общая: 44' 0" (13.41m)

Ширина: 13' 11" (4.24m)

Макс. осадка: 3' 6" (1.07m)

Трапы: 18' 0" (5.49m)

Длина привального бруса: 44' 0"  
(13.41m)

## Скорость, вместимость и масса

Водоизмещение: 33860 Pounds

Вместимость воды: 90 Gallons

Вместимость сточного бака: 72 Gallons

Объем топливного бака: 404 Gallons

## Размещение

Всего кают: 2

Всего коек: 2

Всего ком. состава: 2

## Корпус и палуба

Материал корпуса: Fiberglass

## Информация о двигателе

---

**Двигатели:** 2

**Производитель:** Cummins

**Модель:** 6BTA

**Тип двигателя:** Inboard

**Тип топлива:** Diesel



# ПОДРОБНОЕ ОПИСАНИЕ

## Overview

### INTRODUCTION

The 444 Cockpit Motor Yacht blends the superb luxury and spaciousness of an aft cabin with contemporary styling and thoughtful design and includes Carver's signature raised walkdeck design that allows for a wider, much roomier cabin than other yachts this size.

The salon, galley, and dining area are united into one spacious and elegant "great room." This expansive great room features all sorts of amenities, from the sumptuous designer decor and UltraLeather sofa to the beautiful - yet practical - solid-surface countertops. When it comes to sleeping accommodations, there is the unexpected luxury of two private staterooms, each with its own private head compartment. The Carver 444 was designed for entertainment on the water with great open social spaces inside and out, while also creating complete cabin privacy with the two private suites completely separated on either end of the yacht. This is the extended salon layout of the 444. The twin 370-hp Cummins allow you to get up and go, easily cruising at 20 knots.

- Twin 330hp Cummins diesel engines (1003/998 hours)
- Extended salon layout with maximized interior salon space
- Private cabins fore and aft with walk-around queen berths and en-suite head
- Spacious enclosed flybridge with great visibility from the helm
- Enclosed aft cockpit with great access to side decks and interior
- Reverse-cycle air conditioning and heat
- Generator (843 hours)

**RECENT OWNER UPDATES** These owners have been the very definition of an 'open checkbook' owners. See the extensive list below of improvements, updates, and mechanical, electronic, and cosmetic services. 2019 Updates and Service

- Props removed and tuned (prop sheet available)
- Shafts removed and checked for straightness
- Full shaft alignment (both shafts)
- One new engine mount Stb. engine
- New Cutlass bearings, mid bearings and shaft seals
- Shaft work was performed at Zimmerman Marine Southport
- New rudder Tides Seals
- New VHF radio at helm

- New helm Bluetooth stereo and speakers

## 2018 Updates and Service

- 1000 hour service on engines (invoice available)
- New Heat exchangers both engines
- Engine work performed by Demann Marine
- New Garmin 7612 Chart plotter
- New hand waterproof hand held VHF
- New Garmin Transducer with Clearview and Chirp
- New aft stateroom AC unit (old unit repaired for back-up)
- All new interior ceiling puck lights (LED)
- New main cabin entry door latch with two keys
- New TV in Salon
- 2-New Roku units, Salon and Master Stateroom
- New Bose TV sound bar in Salon
- New three burner Induction cook top in Galley
- New nesting SS cookware for the induction cook top
- New acrylic glassware
- New Magma SS grill with cover
- Both Vacu Flush vacuum pumps rebuilt
- New oil-pan engine heaters installed
- New Aft shower sump pump installed in Helm side curtains
- Full triple compound wax and buff
- Waxed and buffed every 4 months
- Four aluminum cockpit deck chairs
- Four folding teak chairs and table Aft Deck
- Two sets of master and VIP bedding

## 2017 Updates and Service

- Helm front EZ2CY curtains new
- Aft deck curtains new

**EXTERIOR VESSEL TOUR** Step aboard the Carver 444 from the spacious aft swim platform that is wide enough to accommodate a comfortable aft bench and you enter into a nice aft cockpit area. A gradual flight of stairs to port opens to the enclosed aft cockpit space with comfortable outdoor seating in any weather. The soft enclosure allows you to open up the space during beautiful days. The enclosed cockpit opens up to the upper flybridge with easy sight lines between the two spaces for a great outdoor entertainment area. The gradual steps up to the flybridge open up to an aft L-shaped settee to port and a centerline captain's chair with additional seating to starboard. The helm space has great visibility forward and aft for easy handling. Walking forward along the deck is easy thanks to passageway from the enclosed aft cockpit space with doors to port and starboard. For additional boarding when docked at a high raised dock, the Carver 444 also has port and starboard boarding gates along the raised side

## decks.COMMAND BRIDGE:

- Beverage holders (2) - bulkhead-mounted, fold-out
- Lights (2) - courtesy, recessed, with exterior-mounted switch
- Lounge - L-shaped, with storage below, accommodates 5 adults
- Self-draining walk surface
- Stereo speakers (2)
- Storage locker
- Wet bar - self-draining with sink, 20" x 18" (approx.) preparation surface, bottle storage beneath
- Windshield - wraparound, aluminum frame

## HELM

- Companion seat
- DC circuit breaker panel for helm electronics
- Grab rails (2) - 9.5" stainless steel on either side of helm console
- Helm seat - adjustable, high-quality marine-grade upholstery, embroidery stitching
- Tilt steering wheel

## INSTRUMENTATION

- Gauges - synchronizer, rudder angle, and tachometer with hourmeter (1 per engine)
- Multi-gauges (1 per engine) - oil pressure, engine temperature, engine battery voltage, and fuel level. Rocker switch controls

## HELM ELECTRONICS AND BRIDGE SYSTEMS

- Raymarine ST6001+ Hydraulic Autopilot
- Remote Windlass Control
- Trim Tab Control
- Forward, Mid, Aft Bilge Pump Controls
- Analog Engine Monitoring Gauges
- Digital RPM Gauges
- Ritchie Compass
- Garmin GPS MAP XSV 12" Chart Plotter (new 2018)
- Raymarine RL70C Color 24m Radar System
- Morse Engine Throttle/Shifter Combos
- ITT Jabsco Remote Control Flood/Spotlight
- Standard Horizon Explorer VHF Radio (new 2018)
- CFC Ice Machine
- BOSS Bluetooth Audio System (new 2018)

**SALON**The main salon space is nicely integrated with the aft cockpit space. A nice sliding hatch opens from the raised cockpit into the spacious interior seating area with long settees to port and starboard. Expansive windows stretch all the way forward for great water views from any seat.

The open design allows for easy entertainment with line-of-vision to the forward galley.

- 110V outlets (3) - GFCI protected. AC and DC distribution panels
- Cabin stairway - integral, with cherry wood hand rail
- Carpet - beige, tufted cut pile, 65 oz., crush-resistant, 100% nylon.
- Designer decor. Endtables (2) - integral, solid surface top, at either end of lounge.  
Entertainment group - TV and VCR, with wiring for 2 speakers each in salon, master stateroom, and aft deck hardtop
- Entrance door - acrylic, curved, sliding, handle lock, with interior screen
- Floor access hatches - engine room and amidships bilge
- Fresh air system - passive, with controllable overhead vents
- Hardware highlights - brass/chrome
- Lights (9) - halogen, overhead, recessed
- Lounge - Flexsteel, chamois UltraLeather, with double incliners, 36" end, and corner extension
- Miniblinds for expansive windows port and starboard
- Sofa - chamois UltraLeather, storage beneath
- Solid surface countertops
- Stereo speakers (2). Storage cabinets (2) - in aft bulkhead
- Table - free-standing, elevating top
- Telephone connector
- Window vents (2)

**GALLEY**The Carver 444 is designed for easy living. The spacious galley has great counter space, storage and a large refrigerator that make cooking a breeze. The galley is just two steps down from the main salon, creating a defined space, while still right in the action. Between the large fridge and freezer, the integrated microwave and the integrated coffee maker, this galley is ready for preparing home cooked meals after a fun day out on the water.

- Coffee maker
- Flooring - wood plank
- Hardware highlights - brass/chrome
- Lights (2) - halogen, overhead, recessed
- Microwave / convection oven - built-in
- Range - electric, three-burner, ceran top
- Refrigerator/freezer (upright)
- Rocker light switches
- Sink - stainless steel, with solid surface cover
- Solid surface countertops
- Storage - under sink
- Storage drawers
- Storage cabinets

**OWNER'S CABIN**Walking aft from the mains salon you enter the private owner's cabin to starboard. An athwart ship queen berth, with full walk-around space along each side, gets great

natural light from the sliding glass door that accesses the lower aft cockpit area, a great spot to sit out and enjoy a morning coffee. The aft cabin also features a private en-suite head to starboard with a shower stall, corian countertop vanity, and ample storage.

- 110V outlets (3) - GFCI protected
- Bedside end tables - solid surface top, storage beneath
- Berth - queen, inner-spring mattress, offset island
- Carpet - beige, tufted cut pile, 65 oz., crush-resistant, 100% nylon
- Cockpit door - sliding, tinted glass, with interior screen
- DC distribution panel - 12V safety systems
- Hanging locker - cedar-lined, carpeted, 16" hanging bar, shelf, automatic light
- Lights (2) - halogen, reading, recessed
- Lights (3) - halogen, overhead, recessed
- Miniblinds
- Portlights (2) - screened
- Rocker light switches
- Stereo speakers (2)
- Storage cabinets (4)
- Storage drawers (3)

**GUEST STATEROOM** Walking aft from the mains salon you enter the private owner's cabin to starboard. An athwart ship queen berth, with full walk-around space along each side, gets great natural light from the sliding glass door that accesses the lower aft cockpit area, a great spot to sit out and enjoy a morning coffee. The aft cabin also features a private en-suite head to starboard with a shower stall, corian countertop vanity, and ample storage.

- Bedside end tables - solid surface top
- Berth - queen, island
- Carpet - beige, tufted cut pile, 65 oz., crush-resistant, 100% nylon
- Entrance door - pocket-style, secures open and closed, stainless steel hardware
- Hanging locker - cedar-lined, two 8.5" hanging bars, automatic light, integral door stop
- Hardware highlights - brass/chrome
- Lights (5) - halogen, overhead, recessed
- Mirrored headboard
- Overhead hatch - circular, 20.5" diameter, lockable, inside screen, over berth
- Portlights (2) - screened
- Rocker light switches
- Step-ups next to berth - carpeted
- Storage - beneath berth
- Storage cabinets (4)
- MECHANICAL
- Cummins 330B engines (2)
- Dripless shaft logs
- Exhaust mufflers - engines
- Fuel tanks - welded, baffled 5052 aluminum

- Hydraulic steering
- Propeller shafts - aquamet
- Rudders - 421 manganese bronze
- Seawater strainers
- Cutlass bearings - synthetic rubber composite
- Struts - 421 manganese bronze
- Trim tabs - stainless steel, hydraulic

## ELECTRICAL

- AC/DC distribution panels with magnetic circuit breakers and integral bilge blower controls; AC voltmeter; AC ammeter
- Batteries (4) - deep cycle, marine (12V)
- Battery chargers (2) - electronic, AC-DC converters
- External connectors - CATV, telephone
- Ground Fault Circuit Interrupt (GFCI) protection - all 110V outlets
- Shore power connector - 50 amp
- Shore power cord - 50 ft.
- Wiring system - tinned copper strand wire, harnessed, color-coded, labeled, meets or exceeds ABYC standards.

## DECKS

- Aft deck stairway - integral to deck, with 2 stainless steel hand rails
- Boarding access from port or starboard dock
- Cleats (2) - 10" stainless steel, through-bolted through aluminum backing plate, inboard-mounted with stainless steel hawse pipes
- Direct access to master stateroom
- Hatch - guttered, watertight, provides aft bilge access
- Light - courtesy, recessed, on aft deck stairway
- Lights (3) - courtesy, recessed, with exterior-mounted switch
- Locker - transom, 2 doors
- Transom door - aluminum, stainless steel hardware, with 22" grab rail across top
- CONSTRUCTION
- Solid fiberglass hull bottoms with Knytex substrates and Vinylester barrier coat
- Molded fiberglass stringer system
- Hand-laid, molded fiberglass components featuring composite laminate hullsides, decks, and cabintops
- Structural engine mountings - reinforced stringer mountings with gusseted, angle steel plates
- Fabricated aluminum floor frames with stainless steel stanchions
- Cherry wood bulkheads, cabinetry, and trim throughout cabin, with high gloss finish
- Tinted, tempered safety glass frameless window systems
- Unitized deck and cabintop construction with integral aluminum truss reinforcement in cabintop structure

**Broker's Rating:** When we travel with clients FAR out of town for yachts, we don't like surprises when we get there. It's embarrassing for us and can make for an expensive trip. With that in mind, we'd like to share our rating of various systems on the boat so you'll be as informed as possible before you come for a visit. Our rating system is on a 1-10 scale with 10 being 'near perfect' (in OUR opinion). Please view this list as a GUIDE only. Everyone's idea of good and bad can vary quite a bit and everyone brings a different expectation to the yacht shopping process. Our goal in doing this is to help you reach a comfort level with the boat before you invest time and energy to come and see it. We'll summarize by saying that this appears to be an excellent yacht worthy of serious consideration. Beyond telling you what's great about a yacht, don't you also want to know what it needs next? Every yacht, no matter how seemingly turn-key, needs something. Every owner has next year's list of 'to-do's, right? We'll also include in this section what Erin and I think the boat could use to take her from 'current condition' to 'voyage-ready' for your next adventure. Overall Rating: 9.5/10 Yes, really. We are privileged to be able to pick and choose the yachts we list. Often, they're 'nice' but not 'great.' This yacht is 'awesome.' Yeah, yeah, we sound like salesmen (which we are). That said, this yacht is in superb condition. We sold this boat to her current owners after looking at a bunch of not only this model but similar yachts from other manufacturers as well. She came from the Chesapeake Bay. When we arrived to see her again this time, we were prepared to suggest a typical list of updates and corrections for marketing. Not this time! Her owner had prepared her to look like she is headed to a boat show. Very well maintained and thoughtfully updated, the hull both above and below the waterline is in excellent shape. The overall layout of the boat, both above and below decks, is really well configured for long range cruising as well as living aboard.

The Carver 444 is hugely accommodating for four people, six in a pinch. Her two staterooms are huge and you can enter from either side of the bed - no climbing over each other. Super comfortable and inviting spaces both above and below decks. The heads are spacious, both with stand-up showers. The salon works great, has lots of seating, and is very open, bright, spacious and well connected to the galley only a couple of steps down forward to port. We looked hard for blemishes and can't find any so far. Everywhere we looked, whether bilges, storage spaces, or engine room, we're very impressed. Exterior: 9.5/10 Aft cabin motor yachts like the Carver 444 offer multiple levels of lounging and party space. The aft cockpit is large and will accommodate multiple chairs for lounging or several anglers for fishing. The swim platform is right at water level. The party deck is elevated and has a great architectural/visual connection with the fly bridge. Once again, plenty of space for multiple chairs. The L-shape seating up top allows crew and guests to hang with the captain at anchor or underway. Canvas and clear strato-glass is all in very good shape. Much of it is nearly new. Fabric, stitching and zippers are all well maintained. Upholstery is clean and bright, also well maintained. The hull has been beautifully compounded and waxed and gets weekly visits from professional detailers to keep it looking great. Rub rails and hull perimeter all look good. No docking rash that we can find. Interior: 9.5/10 Everything looks great in every living space. The main salon is bright and airy, cabinetry looks good, everything works fine, carpeting is clean, windows all clear and no signs of any leaks or bedding issues. The soft goods are all in excellent shape throughout the boat. There's excellent engine access -- quick one panel raise for checking engine and genset fluids. If needed, two adjacent large floor panels come up for more in-depth maintenance of systems. Electronics:

8.5/10 Everything you need! New 12" Garmin plotter, color 24m radar, Raymarine autopilot, analog and digital engine instrumentation, new VHF, new Bluetooth wireless stereo. About the only thing we can think to add for long distance coastal voyaging might be an AIS system (can be done several ways). A few systems are original to the boat but are in perfect working order. Superb view from the helm forward and aft. Great social connectivity with guests on the L-shaped bench near the helm as well as with guests on the party deck aft

- New 12" Garmin plotter
- New VHF Radio
- New BOSS Bluetooth Audio System
- Engine Room: 9.0/10 (visual inspection only)

Mounted well below the steps and almost horizontal, the engine is easily accessed and serviced. The Racor fuel filter is mounted right on the opening starboard door in the galley, which is perfect for quick access. The engine has been well maintained and has very low hours for the boat's age at 1636 hours since new. This owner is a true sailor and uses the engine only when necessary.

- Good access to systems
- Hoses, mounts, belts look good
- Regular service performed and records to back it up
- Cummins makes probably one of the best and most reliable propulsion systems in the business
- Engines got a significant though routine service update in 2018
- Shafts/Skegs/Props/Bearings all service in 2019
- Low hour engine (1003 hours) and genset (843 hours)

Galley/Head Systems: 9.5/10 I'm a chef, and this is the chef's galley for sure. Great counter space. High-quality appliances. Fantastic fridge and freezer space (as in huge). Dual compressors to separate fridge/freezer plates. Storage compartments and spaces are thoughtfully laid out for maximum efficiency and DEEP. We like that the galley is out of the way of passage through the yacht. The chef does not impede traffic flow through the boat. The head is more like a bathroom with lots of space, and a really large shower.

- Tons of counter space and deep storage
- Huge dual compressor/plate fridge/freezer system
- Two large comfortable heads w/Vacuflush systems
- New 3-burner low power-draw induction glass cooktop (top-of-the-line)

## Исключения

При продаже яхты исключаются личные вещи владельца.



---

## Отказ от ответственности

---

Компания предоставляет описание судна или яхты добросовестно, но не может гарантировать точность этой информации, а также не ручается за техническое состояние. Покупатель должен проинструктировать своих агентов или оценщиков исследовать представленную информацию более подробно, по собственному желанию. Продажа судна или яхты, изменение цены или снятие с продажи будет происходить без предварительного уведомления.

# ФОТОГРАФИИ

2



3



4



5



6



7



8



9



10



11



12



13





14



15



16



17



18



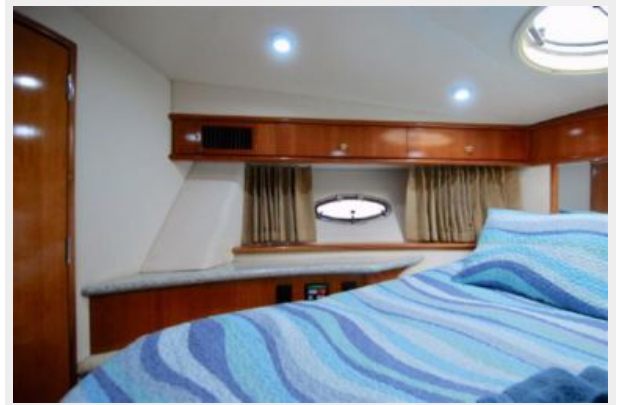
19



20



21



22



23



24



25





26



27



28



29



30



31



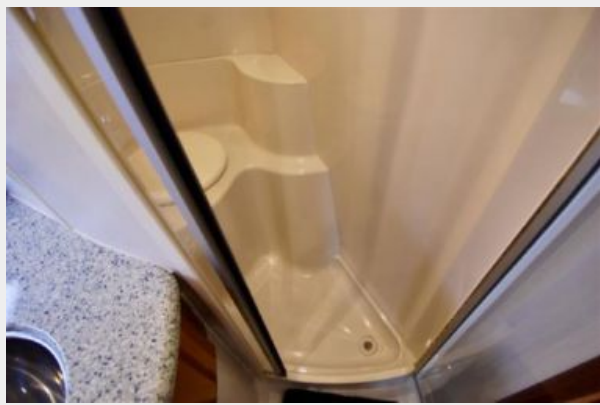
32



33



34



35



36



37





38



39



40



41



42



43





44



45



46



47



48



49



50



51



52



53



54



55



56



57



58



59



60



61





62



63



64



65



66



67



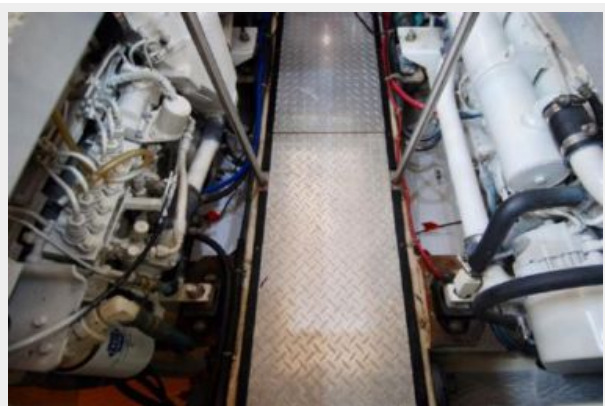
68



69



70



71



72



73



# КОНТАКТЫ

---

Андрей Шестаков (Andrey Shestakov) – ведущий яхтенный брокер отдела продаж яхт и судов компании Shestakov Yacht Sales Inc. Официальный представитель Shestakov Yacht Sales Inc. для русскоговорящих клиентов в центральном офисе компании в Майами/Форт Лодердейл/Флорида/США.

## Контактная информация

---

Email: [andrey@shestakovyachtsales.com](mailto:andrey@shestakovyachtsales.com)

Web: [shestakovyachtsales.com](http://shestakovyachtsales.com)

## Телефоны

---

Краснодарский край: **+7(918)465-66-44**

США, Майами, Флорида: **+1(954)274-4435**

## Время работы

---

Понедельник – Суббота: **9:00 - 21:00**  
EDT

Воскресенье: **Закрето**

## Адрес

---



Harbour Towne Marina, 850 NE 3rd St,  
STE 213, Dania, FL 33004