

NORTHERN LIGHT — COMFORTINA



Builder: [Comfortina](#)

Year Built: 2002

Model: Cruising Sailboat

Price: PRICE ON APPLICATION

Location: United States

LOA: 42' 0" (12.80m)

Beam: 12' 8" (3.86m)

Max Draft: 6' 11" (2.11m)

Our experienced yacht broker, Andrey Shestakov, will help you choose and buy a yacht that best suits your needs **Northern Light — Comfortina** from our catalogue. Presently, at Shestakov Yacht Sales Inc., we have a wide variety of yachts available on our sale's list. We also work in close contact with all the big yacht manufacturers from all over the world.

If you would like to buy a yacht **Northern Light — Comfortina** or would like help answering any questions concerning purchasing, selling or chartering a yacht, please call **+1(954)274-4435**

TABLE OF CONTENTS

TABLE OF CONTENTS	2
SPECIFICATIONS	5
Overview	5
Basic Information	5
Dimensions	5
Speed, Capacities and Weight	5
Accommodations	5
Hull and Deck Information	6
Engine Information	6
DETAILED INFORMATION	7
Overview	7
Exclusions	8
Disclaimer	8
PHOTOS	9
2	9
3	9
4	9
5	9
6	9
7	9
8	10
9	10
10	10
11	10
12	10
13	10
14	11
15	11

16	11
17	11
18	11
19	11
20	12
21	12
22	12
23	12
24	12
25	12
26	13
27	13
28	13
29	13
30	13
31	13
33	14
32	14
34	14
35	14
36	14
37	14
38	15
39	15
40	15
41	15
42	15
43	15
45	16

44	16
CONTACTS	17
Contact details	17
Telephones	17
Office hours	17
Address	17

SPECIFICATIONS

Overview

Price improved \$10,000!The Comfortina 42 is not only fast but also a very safe and seaworthy bluewater yacht with plenty of living space and luxury below decks. She features a beautiful solid teak interior with many well-finished details. There is plenty of storage space in lockers, drawers, and the large cockpit locker to starboard. Northern Light is a single owner boat that has been very well cared for and loved. Put this one on your must-see list!3 Cabin 2 Head LayoutSolarWater MakerLarge sail inventoryNew bottom with six coats of epoxy - 2018If you are ready to throw off the lines and go cruising today, then you need to see Northern Light! Call the listing broker to schedule an appointment.

Basic Information

Category: Cruising Sailboat

Model Year: 2002

Year Built: 2002

Country: United States

Dimensions

LOA: 42' 0" (12.80m)

LWL: 37' 9" (11.51m)

Beam: 12' 8" (3.86m)

Max Draft: 6' 11" (2.11m)

MFG Length: 42' 0" (12.80m)

Speed, Capacities and Weight

Displacement: 20282 Pounds

Water Capacity: 60 Gallons

Fuel Capacity: 57 Gallons

Accommodations

Total Cabins: 3

Total Heads: 2

Hull and Deck Information

Hull Material: Fiberglass

Engine Information

Engines: 1

Manufacturer: Volvo Penta

Model: D55

Engine Type: Sail Drive

Fuel Type: Diesel

DETAILED INFORMATION

Overview

Comfortina 42

Hull: Blue with Yellow/Gold trim and Rub rail Hull and deck are insulated with closed cellular foam and internal liner Bottom was redone with 6 coats of epoxy 2018 and bottom painted in 2019 Sail: Main 8.5 oz Dacron with Lewmar Batten Cars & Slides with 3 reef points Sail new 2014 Spinnaker New - flown three times #1 Head Sail (150 %) New – Never Used #2 Head Sail (140%) #3 Cutter Sail Storm Sail New – Used two times Sock for Spinnaker Rig: Traditional Mast Furling Cutter stay Boom with 2 reef cars Dutchman Boom Brake Mast mounted Spinnaker Pole Cars adjustable from the cockpit Running backstays Radar Reflector Engine: Volvo 55 HP with sail drive – 4606 hours – VERY WELL MAINTAINED 3 bladed folding prop New 2019 Line cutter New 2019 - Not Installed Deck: Teak in cockpit and all walk surfaces 90%+ of screws and plugs replaced in last two years Lifelines with access gates on Port and Starboard. 6 Hatches with screens and covers Winches: 2 Electric primary winches (Andersen) 4 self-tailing Main & Halyard Winches (Andersen) Canvas: Dodger New 2018 Bimini with connecting roof between Dodger & Bimini Full enclosure Complete set of cockpit cushions Summer sun cover for cockpit & deck Water Maker: Spectra, Santa Cruz Model, 38 liters per hour capacity with spare motor and spare filters Ultra – Violet water purification system Windless: Lewmar, with vertical Capstan and with AGM Battery – New Motor 2018 Spare Windlass motor Inverter: 1200W output, 115 / 230 V Battery Charger: Master volt, 115 or 230 V input Batteries: 5 House Batteries (95 A/H each) New 2017 1 AGM Windlass battery New 2017 1 Generator Start battery New 2017 1 Starting Battery - New 2019 Solar Panel: 2 85-watt output 1 75watt output 4 Solar Panel Control Instruments (1 is a spare) All LED Lights (Steaming light not LED) Tankage: 1 42 gal Diesel Tank 1 15 gal Diesel Tank Tank indicators at the navigation station Water Tank: 2 60 gal Capacity Spare Pumps Water Heater: 13 gal capacity Heater: Wabesto forced Air Heater with six outlets Ground Tackle: 55 lbs Delta 44 lbs Stainless Steel Bruce 55 lbs CQR 22 lbs Bruce Stern Anchor Fortress Storm Anchor 328' all Chain rode (10 mm) 2013 Tender: 8'8" Inflatable Dinghy New 2018 Tender Motor: 4 HP Yamaha 4-stroke engine with internal tank Safety: EPIRB Four-person Winslow life raft. – needs recertification Paratek Sea Anchor – never used 2 Drogues with 100' line each Bolt / Wirecutter Man-over-board Pole Life rings w/lines Emergency Bilge Pump (4000 L/Hr). Built-in Safe For document, Valuables, and Security Interior: Coil Mattresses for V-Birth and Port Guest cabin Lee – cloths mounted in Main Cabin for Port & Starboard Settee Starboard Guest Cabin or locker Radio: Panasonic with 8 CD Changer Instrumentation: 6 – Simrad Wind, Depth, Speed Instruments with both inside & outside stations Lawrence GPS & Chartplotter Shipmate RS 8400 DSC VHF Radio with both inside and outside stations ICS – NAV. 6, NAVTEX Unit ICOM HAM / SSB Radio w / tuner Pactor 3 Modem AIS Receiver Radar Shore Power: 2 30 amp shore power cords with pigtails 1 Galvanic Isolator Galley: Upright Refrigerator Chest Refrigerator with 6 gal Freezer Complete with water

Cooled Compressor (One for each) 2 Burner Stove / Oven Other: Spare Parts Tools Dishes & Cutlery, Pans & Cooking ware 8" Ship Clock 8" Ship Barometer Fans Fenders Dock lines Companionway Screens

Exclusions

Owner's personal belongings.

Disclaimer

The Company offers the details of this vessel or yacht in good faith but cannot guarantee or warrant the accuracy of this information nor warrant the condition of the vessel. A buyer should instruct his representatives, agents, or his surveyors, to investigate such details as the buyer desires validated. This vessel or yacht is offered subject to prior sale, price change, or withdrawal without notice.

PHOTOS

2



3



4



5



6



7



8



9



10



11



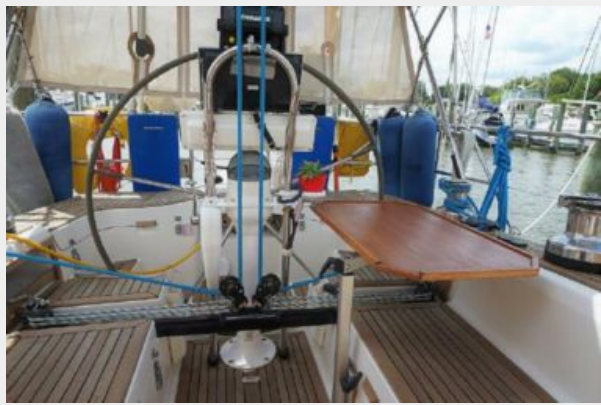
12



13



14



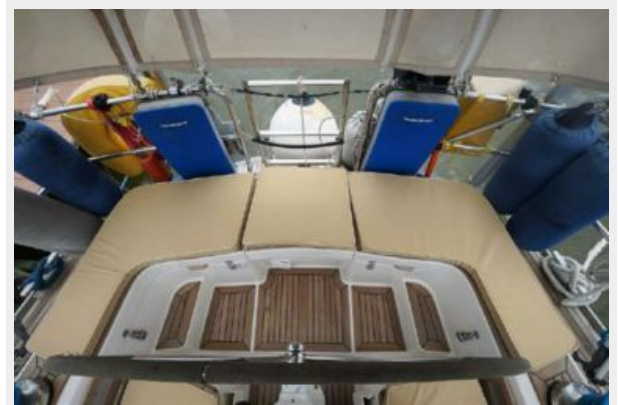
15



16



17



18



19



20



21



22



23



24



25



26



27



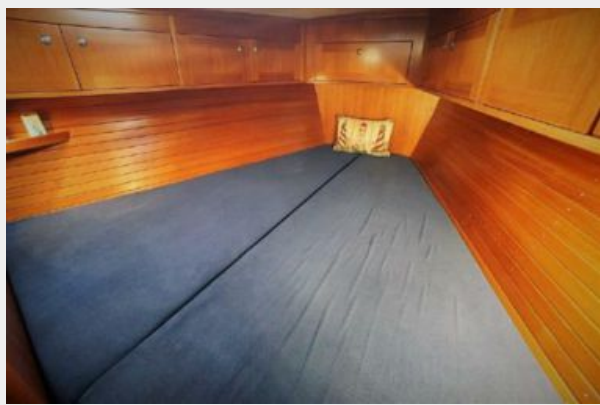
28



29



30



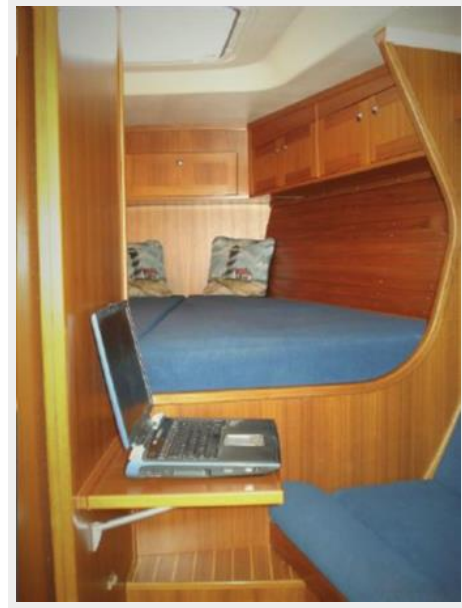
31



32



33



34



35



36



37



38



39



40



41



42



43



44



45



CONTACTS

Andrey Shestakov, leading yacht broker of the sales department of Shestakov Yacht Sales Inc. Shestakov Yacht Sales Inc., the official representative of the Miami/Fort Lauderdale FL headquarters.

Contact details

Email: andrey@shestakovyachtsales.com

Web: shestakovyachtsales.com/en/

Telephones

USA: +1(954)274-4435

Office hours

Monday – Saturday: **9:00 - 21:00** EDT

Sunday: **closed**

Address



Harbour Towne Marina, 850 NE 3rd St,
STE 213, Dania, FL 33004