

AZIZAM — JFA



Builder: JFA

Year Built: 2004

Model: Catamaran

Price: PRICE ON APPLICATION

Location: France

LOA: 85' 0" (25.91m)

Beam: 39' 1" (11.91m)

Max Draft: 4' 11" (1.50m)

Our experienced yacht broker, Andrey Shestakov, will help you choose and buy a yacht that best suits your needs **Azizam — JFA** from our catalogue. Presently, at Shestakov Yacht Sales Inc., we have a wide variety of yachts available on our sale's list. We also work in close contact with all the big yacht manufacturers from all over the world.

If you would like to buy a yacht **Azizam — JFA** or would like help answering any questions concerning purchasing, selling or chartering a yacht, please call **+1(954)274-4435**

TABLE OF CONTENTS

TABLE OF CONTENTS	2
SPECIFICATIONS	4
Overview	4
Basic Information	5
Dimensions	5
Speed, Capacities and Weight	5
Accommodations	5
Hull and Deck Information	5
Engine Information	6
DETAILED INFORMATION	7
Accommodations	7
Deck Equipment	7
Navigation/Electrical Equipment	7
Electricity	7
Rigging	7
Sails	7
Engines and Machinery	8
Ground Tackle	8
Tankage	8
Tenders and Toys	9
Dimensions	9
Refits	10
Disclaimer	10
Exclusions	11
Disclaimer	11
PHOTOS	12
_NCL3651_RoJ_A3	12
_NCL3539_RoJ_A3	12

_NCL3739_RoJ_A3	12
_NCL3645_RoJ_A3	12
_NCL3793_RoJ_A3	12
_NCL3679_RoJ_A3	12
_NCL3619_RoJ_A3	13
_NCL3267_NCL3271_RoJ_A3	13
_NCL3227_NCL3231_RoJ_A3	13
_NCL3242_NCL3246_RoJ_A3	13
_NCL9450_NCL9454_RoJ_A3	13
_NCL9470_NCL9474_RoJ_A3	13
_NCL9530_NCL9534_RoJ_A3	14
_NCL9490_NCL9494_RoJ_A3	14
_NCL9525_NCL9529_RoJ_A3	14
_NCL9375_NCL9379_RoJ_A3	14
_NCL9400_NCL9404_RoJ_A3	14
_NCL9405_NCL9409_RoJ_A3	14
_NCL9415_NCL9419_RoJ_A3	15
_NCL9435_NCL9439_RoJ_A3	15
_NCL9445_NCL9449_RoJ_A3	15
Engine room	15
JFA Catamaran	15
CONTACTS	16
Contact details	16
Telephones	16
Office hours	16
Address	16

SPECIFICATIONS

Overview

For sale direct with the owner.

2004 JFA Yacht 85ft Catamaran, was the first multihull to be built by the French shipyard JFA. She has been an extremely successful project for them, having completed several around the world trips, and with an exceptional charter record.

'Azizam' is currently on her second refit; one in 2012 and in 2016, the yacht has received a very comprehensive refit work list during the refits from, full hull repainting, new electrical components, completely new interior and machinery upgrades.

Built for fast cruising, with minimal crew for both comfort and safety, a spacious layout offers four double cabins for up to 6/8 guests. A bright and airy interior - which was completely upgraded in her last refit - allows for a very pleasant experience aboard.

Rigged with a full carbon mast and 'Park Avenue' boom, Azizam has a sail surface of 306 m2 while reaching. The weight/speed ratio allows the maintenance of a high average speed under sail for fast crossings. Also equipped with two Yanmar 150hp engines with a 2000 mile range at 9 knots, which really gives this yacht all the comforts of cruising.

Azizam is with her third owner, and currently cruising in Miami, US, then heading back across the pond to Europe towards the end of May 2020.

This package offers her new owner a turnkey, round the world sailing catamaran, with completely up to date systems, and a wonderful cruising/charter record.

Basic Information

Category: Catamaran

Sub Category: Cruising Sailboat

Model Year: 2004

Year Built: 2004

Refit Year: 2016

Country: France

Vessel Top: Arch

Dimensions

LOA: 85' 0" (25.91m)

LWL: 80' 5" (24.51m)

Beam: 39' 1" (11.91m)

Max Draft: 4' 11" (1.50m)

MFG Length: 84' 6" (25.76m)

Speed, Capacities and Weight

Displacement: 99208.0179 Pounds

Gross Tonnage: 111 Pounds

Water Capacity: 290.5892572 Gallons

Holding Tank: 184.9204364 Gallons

Fuel Capacity: 528.344104 Gallons

Accommodations

Total Cabins: 4

Hull and Deck Information

Hull Material: Carbon Composite

Deck Material: Carbon Composite

Hull Color: Blue

Hull Finish: Aluminum

Hull Designer: Pierre-Jacques KUBIS

Engine Information

Engines: 2

Manufacturer: Yanmar

Model: 4LHA-HTP

Engine Type: Inboard

Fuel Type: Diesel

DETAILED INFORMATION

Accommodations

'Azizam' has been built for short crew handling and accommodate eight guests in total.

Accommodation

The generous owner's cabin and one guest cabin is situated in the port hull. In the starboard hull is one guest cabin, the galley and one crew cabin. All cabins are with en-suite facilities.

Deck Equipment

- Harken winches
- Lewmar and Goios aluminium flush deck hatches
- Tilse 17mm thick superstructure glass
- Manual carbon fibre folding passerelle
- Hydraulic aft door

Navigation/Electrical Equipment

- B&G Systems and Autopilot
- Icom VHF
- Custom main computer (2015)

Electricity

- 230v 50 Hz
- Service battery banks 1200 Ah for the 24 CDC power supply

Rigging

- Lorima Carbon fibre mast and Park Avenue boom
- Navtec Kevlar lateral rigging with rod stays
- Two Profurl Manual Furler
- Spectra and Dyneema running rigging

Sails

- Rolly Tasker- Main sail (2017)
- Incidence - Main
- Solent - Genoa
- Northsail – Gennaker
- Incidence – Spinnaker (2004 hardly used)

Engines and Machinery

- Two Yanmar 4LHA-HTP - 150 Hp @3300 rpm engines
- One Kohler 19 Kw 50 Hz Generator
- ZF63 A reduction boxes with ratio 2.1/1
- Maxprop 25" propellers
- Lecomble & Schimidt hydraulic steering
- Hydraulic 24v motor/pump for winches and davits
- Two Aquest watermakers – capacity 2400l/h each
- G&R 100L water heater
- Eberspacher hydronic
- Technicold fancoil system – flow through heater and chiller

Ground Tackle

- Lewmar windlass
- Two CQR Anchors
- 120m of chain (14mm)

Tankage

Fuel - Range : 2000 miles @ 7knots

Two aluminium tanks of 1000 litres each

Two flexible tanks of 550 litres each

Water capacity

Two stainless steel tanks of 650 litres each

Black water

Two stainless steel tanks of 350 litres each

Grey water

Two stainless steel tanks of 350 litres each

Tenders and Toys

- AB Alx 16 Rib with a Mercury 40hp outboard (2014)
- Kawasaki Waverunner for three people (2018)
- Davit arch with hydraulic capstans
- Two Seabobs

Dimensions

LOA: 25.75 m / 84'6"

LWL: 24.5m / 80'5"

Beam: 11.90 m / 39'1"

Draft: 1.5 m / 4'11"

Spar dimensions:

I = 26.71 m

J = 8.92 m

P = 28.8 m

E = 9.72 m

Sail Area:

Main sail = 199 m²

Genoa = 133 m²

Solent = 75 m²

Staysail = 75 m²

Spinnaker = 400 m²

Refits

2016 –New Zealand

- Haul out and antifouling 2.5 coat Micron 66
- Deck non-skid paint AWLGRIP oyster white
- Hull paint ALCRAFT Flag Blue
- Light teak sanding
- Rudders refit x 2
- Rudder bearings (top and back)
- Water maker low and high pressure pump refit. Membranes cleaning
- Motors shafts seal refit
- New motors shaft cutlass bearing
- New trough hull fitting x 4 (stainless steel)
- Goose neck refit All chandlery check/repair/refit/change
- All inboard system (fresh, grey, black water...) check/repair/refit/change
- Chain and anchor galvanisation
- Complete rig check. New baby (Solent) stay (rod). New fore shroud (Kevlar)
- Maxpower hydraulic central check/repair/refit/change
- Motors and generator injectors and injection pumps check/adjust/clean. New alternators (x3). New solenoid starter (x2)

2012-2016

- New Engine control box (port) 2015
- New Low pressure pump water maker 2013
- Refit high pressure water maker pump 2013
- New freezer LIEBHERR 100 L 2014 New fridge 2011
- New auto pilot motors x 2 2011
- New hydraulic motor MAXPOWER 2013

Disclaimer

This offering is subject, but not limited to, errors, omissions, price fluctuation, and prior sale or withdrawal without notice. All details disclosed are without guarantee and solely based on the information received by the seller, intended as a general guide to the Yacht. Engel & Volkers cannot be held liable for any lack of completeness, inaccuracy, or ambiguities and/or errors contained in the information disclosed. It is the buyer's responsibility to disclose the details of any concern(s) to the seller, by the request of a survey, inspection

Exclusions

Owner's personal belongings.

Disclaimer

The Company offers the details of this vessel or yacht in good faith but cannot guarantee or warrant the accuracy of this information nor warrant the condition of the vessel. A buyer should instruct his representatives, agents, or his surveyors, to investigate such details as the buyer desires validated. This vessel or yacht is offered subject to prior sale, price change, or withdrawal without notice.

PHOTOS

_NCL3539_RoJ_A3



_NCL3651_RoJ_A3



_NCL3739_RoJ_A3



_NCL3645_RoJ_A3



_NCL3793_RoJ_A3



_NCL3679_RoJ_A3



_NCL3619_RoJ_A3



_NCL3267_NCL3271_RoJ_A3



_NCL3227_NCL3231_RoJ_A3



_NCL3242_NCL3246_RoJ_A3

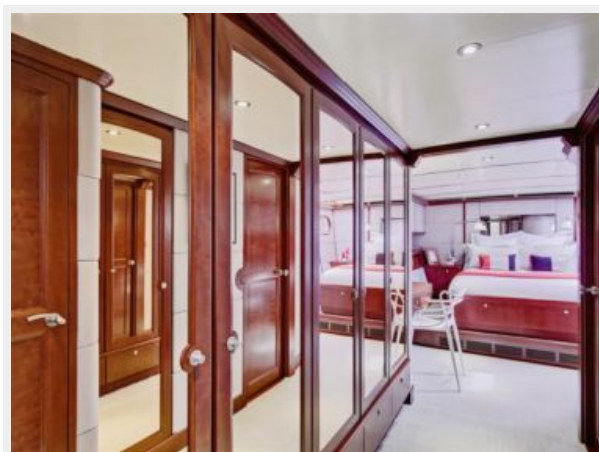


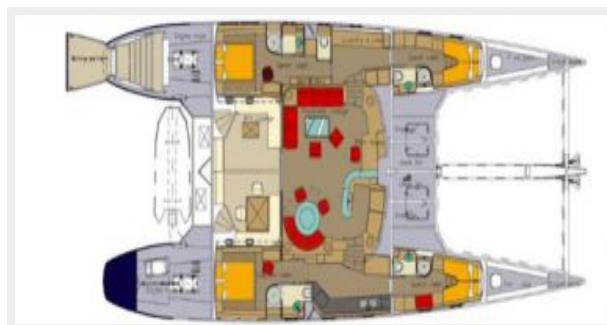
_NCL9450_NCL9454_RoJ_A3



_NCL9470_NCL9474_RoJ_A3



_NCL9530_NCL9534_RoJ_A3**_NCL9490_NCL9494_RoJ_A3****_NCL9525_NCL9529_RoJ_A3****_NCL9375_NCL9379_RoJ_A3****_NCL9400_NCL9404_RoJ_A3****_NCL9405_NCL9409_RoJ_A3**

_NCL9415_NCL9419_RoJ_A3**_NCL9435_NCL9439_RoJ_A3****_NCL9445_NCL9449_RoJ_A3****Engine room****JFA Catamaran**

CONTACTS

Andrey Shestakov, leading yacht broker of the sales department of Shestakov Yacht Sales Inc. Shestakov Yacht Sales Inc., the official representative of the Miami/Fort Lauderdale FL headquarters.

Contact details

Email: **andrey@shestakovyachtsales.com**

Web: shestakovyachtsales.com/en/

Telephones

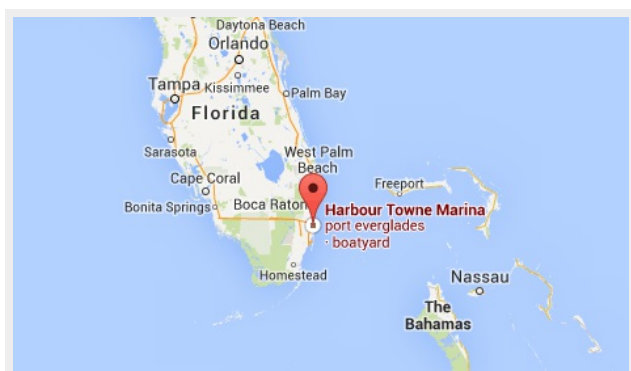
USA: **+1(954)274-4435**

Office hours

Monday – Saturday: **9:00 - 21:00 EDT**

Sunday: **closed**

Address



Harbour Towne Marina, 850 NE 3rd St,
STE 213, Dania, FL 33004