

OMA — HORIZON



Судостроитель: HORIZON

Год постройки: 2019

Модель: Моторная яхта

Цена: **ЦЕНА ЯХТЫ ПО ЗАПРОСУ**

Местонахождение: United States

Длина общая: 56' 0" (17.07m)

Ширина: 15' 9" (4.80m)

Макс. осадка: 4' 8" (1.42m)

Крейс. скорость: 23 Kts. (26 MPH)

Макс. скорость: 28 Kts. (32 MPH)

Купить **OMA — HORIZON** а также выбрать подходящую вам яхту из нашего каталога яхт вам поможет опытный яхтенный брокер Андрей Шестаков. На сегодняшний день компания **Shestakov Yacht Sales Inc.** имеет большое количество яхт в собственном списке продаж, а также тесно сотрудничает со всеми крупными яхтенными производителями по всему миру.

Для того чтобы купить яхту **OMA — HORIZON** а также проконсультироваться по любому вопросу связанному с покупкой, продажей, чартером яхт позвоните по телефону **+7(918)465-66-44**.

ОГЛАВЛЕНИЕ

ОГЛАВЛЕНИЕ	2
ХАРАКТЕРИСТИКИ	4
Основная информация	4
Размеры	4
Скорость, вместимость и масса	4
Размещение	4
Корпус и палуба	5
Информация о двигателе	5
ПОДРОБНОЕ ОПИСАНИЕ	6
Boat Highlights	6
Accommodations	6
Salon	6
Galley	7
Master Stateroom	7
VIP Stateroom 1	7
Guest Stateroom 1	7
Flybridge	7
Hull	7
Deck Equipment	8
Engine Room and Equipment	8
Mechanical	8
Electrical Systems	8
Electronics	9
Исключения	9
Отказ от ответственности	9
ФОТОГРАФИИ	10
Profile 1	10
Profile 2	10

Profile 3	10
Profile Aft View	10
Aft Deck 1	10
Aft Deck 2	10
Aft Deck 3	11
Flybridge	11
Salon 1	11
Salon 2	11
Galley 1	11
Salon 3	11
Galley 2	12
Lower Helm	12
Forward SR 1	12
Forward SR 2	12
Master SR 1	12
Master SR 2	12
Master Head 2	13
Master Head 1	13
E56-layout GA 2018	13
Guest SR	13
КОНТАКТЫ	14
Контактная информация	14
Телефоны	14
Время работы	14
Адрес	14

ХАРАКТЕРИСТИКИ

Основная информация

Тип судна: Моторная яхта

Подкатегория: Flybridge

Модельный год: 2020

Год постройки: 2019

Страна: United States

Верх: Open

Открытая палуба мостика: Да

Размеры

Длина общая: 56' 0" (17.07m)

Длина по ватерлинии: 46' 3" (14.10m)

Ширина: 15' 9" (4.80m)

Макс. осадка: 4' 8" (1.42m)

Трапы: 20' 6" (6.25m)

Скорость, вместимость и масса

Крейс. скорость: 23 Kts. (26 MPH)

Макс. скорость: 28 Kts. (32 MPH)

Водоизмещение: 60847 Pounds

Вместимость воды: 160 Gallons

Вместимость сточного бака: 60 Gallons

Объем топливного бака: 720 Gallons

Размещение

Всего кают: 3

Спальные места: 5

Всего ком. состава: 2

Корпус и палуба

Материал корпуса: Fiberglass

Комплектация корпуса: Planing

Цвет корпуса: White

Отделка корпуса: Plastic

Информация о двигателе

Двигатели: 2

Производитель: CAT

Модель: C-12

Тип двигателя: Inboard

Тип топлива: Diesel

ПОДРОБНОЕ ОПИСАНИЕ

Boat Highlights

Take advantage of this very unique opportunity for the immediate delivery of a custom designed, 2020 Horizon E56 Motoryacht. The dynamic exterior of the Horizon E56 features a refined and streamlined profile with continuous style lines and unbroken profile, making the E56 a lesson in design and proportion. The oversized windshield provides for improved visibility from the lower helm and also creates a spectacular overhead skylight for the on deck dining area. The large main deck side windows flow into a uniquely streamlined effect which maximizes the natural lighting and compliments the custom interior LED lights for optimal lighting day or night.

Specified for her third-time Horizon owner, the E56 sport yacht *OMA* focuses on providing a fun and comfortable space for entertaining family and friends. Her interior styling was customized to suit the owner's modern preferences, combining rich Sapele wood with designer soft goods and beautiful stones. *OMA* is a true work of art, capturing her owner's wish for a luxurious oasis on the water.

Having only seen slight usage since her recent delivery, her owner has had a change in cruising plans and has decided to move into a larger yacht.

Key Features

- Open flybridge design
- Three stateroom + two head layout
- Beautiful custom interior design
- V-Kool installed on all fwd and side windows
- Stacked washer/dryer
- Side Power bow/stern thrusters
- Bennett trim tabs
- Custom Garmin NAV system
- 50A Shore power system w/ 75' retractable cord
- Customized Stamoid flybridge cover

Accommodations

Guest accommodations include full beam master w/head Stbd twin cabin & VIP w/shared head Lower helm w/ black leather riding seat w/ storage underneath Sapele wood in satin finish Customized, luxurious interior design for soft goods & finishes Custom carpet in the salon & staterooms Stacked washer/dryer Custom Hunter Douglas blinds for main salon & cabins

Salon

L-shaped sofa & loveseat with Kravet Designer Chenille fabric Custom-designed hi/lo coffee/dining table Multiple storage cabinets Samsung 40" LED TV BOSE Lifestyle 600 entertainment system Samsung Blu-ray player + Apple TV

Galley

Granite countertops + floor S/S sink with disposal Upgraded to GE stainless refrigerator w/ icemaker GE electric cook top w/ exhaust blower GE oven GE dishwasher

Master Stateroom

Full-beam stateroom design Queen-size bed w/ hotel-grade innerspring mattress Full height hanging locker Storage cabinets per layout, w/ Maitore wood countertop Samsung 40" LED TV w/ Fusion speakers Granite nightstand tops Ensuite head w/ shower, toilet & sink per layout White quartz countertops & floors in head

VIP Stateroom 1

Queen-size bed w/ hotel-grade innerspring mattress Full height hanging locker Storage cabinets per layout Granite nightstand tops Ensuite head w/ shower, toilet & sink per layout White quartz countertops & floors in head

Guest Stateroom 1

Single bed w/ hotel grade innerspring mattress Full height hanging locker Granite nightstand tops Shares head w/ VIP stateroom

Flybridge

Nonskid boat deck Tinted acrylic windshield with S/S frame Seating w/ Teak table w/ Walnut trim Custom-designed larger FRP cabinet w/ half-height fridge/icemaker & electric BBQ in wet bar cabinet (2) STIDD helm chairs Luxury helm console w/ full set of instruments (1) Tokai Sunshine search light Slatted drain panels under seats for storage Radar arch with electric horn, antennas and TV SAT dome

Hull

White gel coat finish 3D VARTM infusion process for improved strength & less weight High-density foam cored construction above waterline FRP solid hull bottom One-piece hull lamination and longitudinal girders Main engine girders w/ high density foam coring Deck & superstructure

foam cored reinforcement for rigidity International brand anti-fouling bottom paint w/ anti-osmosis treatment

Deck Equipment

Nonskid side and foredeck Heavy-duty S/S 1 1/4" handrail w/ 1" stanchions Heavy-duty S/S cleats FRP cap rail S/S rubrail around hull deck joint Maxwell winch VC12000 w/ FRP base High tensile 3/8", 200 ft anchor chains S/S roller & chain stopper for anchor chain S/S 50kg anchor Freshwater anchor chain washdown Sunbathing cushion on fwd deck Frameless windows, tinted tempered safety glass with V-Kool application (2) Side boarding gates Teak on aft deck, swim platform & exterior steps Aft deck table w/ Teak tabletop, Wenge trim + sliding mechanism Built-in shower w/ hot/cold water above swim platform Custom-designed FRP box in first step for boarding ladder storage Marquipt manual gangway for boarding Exterior aft deck stairwell to flybridge Access hatch to engine room w/ ladder Control stations to port & stbd aft FRP cabinet w/ icemaker + storage, per layout

Engine Room and Equipment

Twin Caterpillar C12 Acert 850hp engines with 70 hours High performance 4 blade propellers Fuel filters/water separator each engine Exhaust system for engines w/ by-pass mufflers Bennett trim tabs Side power electric bow/stern thrusters, 13.15hp Engine alarm system for low oil pressure & high-water temperature (2) Engine compartment blowers (AC&DC) Sea Fire fire/smoke alarm system Engine room designed w/ white finish & black rubber floor Sound & heat insulated material in bulkheads & ceiling S/S overhead grab rail LED ceiling lights in ER

Mechanical

Aluminum fuel tanks total 720USG w/ sight gauges RACOR 500MA fuel filter on generator Oil change pump system for engine & gens Chilled water Marine Air air conditioning Fresh water hose for engine & gen expansion tanks 160 Gallon FRP water tank High volume DC freshwater pressure pump Marine grade lines & color-coded piping (2) 20 Gallon water heaters Hot water recycle pump Extra stand-by freshwater pump Pre-wire for watermaker 60 Gallon holding tank w/ pump Electric level indicators for holding tank w/ Y-valve for dockside pump out TECMA electric flush toilet in each head Electric RULE bilge pumps Two-level high-water bilge alarm

Electrical Systems

21.5kW (60Hz) Onan generator with 225 hours 3kW inverter 50A shore power system w/ 75' Glendinning retractable shore cord LED ceiling, courtesy, bulwark, and rope lighting, throughout 24VDC to 12V DC step down 40A transformer One battery charger for all batteries (4) Batteries for engine start up (2) Batteries for ships service power GFI protection for AC required

outletsBEP monitoring system for tanks & batteriesElectrolysis bonding system24V DC monitoring systemBEP Battery switchItalian VIMAR switches for lighting & receptaclesAV equipment for entire yacht, per owner's specifications

Electronics

GARMIN Marine Camera for engine roomKVH direct TV w/ receiversWifi Rogue for local wifiPeppwave for private cellular data **LOWER HELM**(2) GARMIN GPSMAP 16" screensGARMIN autopilot, AISICOM VHFIntegrated instrument panel w/ engine instruments & monitoring equipmentRITCHIE compassVariable speed wipers for windshieldFuel/water level indicator system**FLYBRIDGE**

(2) Garmin GPSMAP 17" screensIntegrated instrument panel w/ engine instruments & monitoring equipmentICOM VHFRIE compass

Исключения

При продаже яхты исключаются личные вещи владельца.

Отказ от ответственности

Компания предоставляет описание судна или яхты добросовестно, но не может гарантировать точность этой информации, а также не ручается за техническое состояние. Покупатель должен проинструктировать своих агентов или оценщиков исследовать представленную информацию более подробно, по собственному желанию. Продажа судна или яхты, изменение цены или снятие с продажи будет происходить без предварительного уведомления.

ФОТОГРАФИИ

Profile 1



Profile 2



Profile 3



Profile Aft View



Aft Deck 1



Aft Deck 2



Aft Deck 3



Flybridge



Salon 1



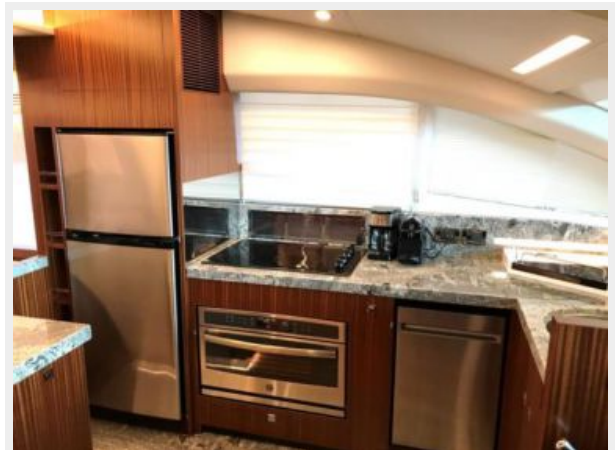
Salon 2



Salon 3



Galley 1



Galley 2



Lower Helm



Forward SR 1



Forward SR 2



Master SR 1



Master SR 2



Master Head 1



Master Head 2



Guest SR



E56-layout GA 2018



КОНТАКТЫ

Андрей Шестаков (Andrey Shestakov) – ведущий яхтенный брокер отдела продаж яхт и судов компании Shestakov Yacht Sales Inc. Официальный представитель Shestakov Yacht Sales Inc. для русскоговорящих клиентов в центральном офисе компании в Майами/Форт Лодердейл/Флорида/США.

Контактная информация

Email: andrey@shestakovyachtsales.com

Web: shestakovyachtsales.com

Телефоны

Краснодарский край: **+7(918)465-66-44**

США, Майами, Флорида: **+1(954)274-4435**

Время работы

Понедельник – Суббота: **9:00 - 21:00**
EDT

Воскресенье: **Закрето**

Адрес



Harbour Towne Marina, 850 NE 3rd St,
STE 213, Dania, FL 33004