

AMAZING GRACE III — MAINSHIP



Судостроитель: MAINSHIP

Год постройки: 2006

Модель: Траулер

Цена: ЦЕНА ЯХТЫ ПО ЗАПРОСУ

Местонахождение: United States

Длина общая: 40' 0" (12.19m)

Ширина: 14' 2" (4.32m)

Макс. осадка: 3' 8" (1.12m)

Крейс. скорость: 10 Kts. (12 MPH)

Макс. скорость: 17 Kts. (20 MPH)

Купить **Amazing Grace III — MAINSHIP** а также выбрать подходящую вам яхту из нашего каталога яхт вам поможет опытный яхтенный брокер Андрей Шестаков. На сегодняшний день компания **Shestakov Yacht Sales Inc.** имеет большое количество яхт в собственном списке продаж, а также тесно сотрудничает со всеми крупными яхтенными производителями по всему миру.

Для того чтобы купить яхту **Amazing Grace III — MAINSHIP** а также проконсультироваться по любому вопросу связанному с покупкой, продажей, чартером яхт позвоните по телефону **+7(918)465-66-44**.

ОГЛАВЛЕНИЕ

ОГЛАВЛЕНИЕ	2
ХАРАКТЕРИСТИКИ	6
Обзор	6
Основная информация	6
Размеры	6
Скорость, вместимость и масса	6
Размещение	6
Корпус и палуба	7
Информация о двигателе	7
ПОДРОБНОЕ ОПИСАНИЕ	8
MAIN DESCRIPTION	8
40' MAINSHIP VESSEL WALKTHROUGH	8
40' MAINSHIP ACCOMMODATIONS	8
40' MAINSHIP SALON	8
40' MAINSHIP GALLEY	8
40' MAINSHIP DINING	9
40' MAINSHIP MASTER STATEROOM	9
40' MAINSHIP GUEST STATEROOM	9
40' MAINSHIP LAUNDRY	9
40' MAINSHIP FLYBRIDGE	9
40' MAINSHIP SUNDECK	9
40' MAINSHIP AFTDECK	10
40' MAINSHIP AUDIO/VISUAL EQUIPMENT	10
40' MAINSHIP ELECTRONICS	10
40' MAINSHIP ENGINE/MECHANICAL EQUIPMENT	10
40' MAINSHIP DECK EQUIPMENT	10
40' MAINSHIP TENDER	11
40' MAINSHIP SAFETY AND FIRE PROTECTION	11

40' MAINSHIP EXCLUSIONS	11
DISCLAIMER	11
Исключения	11
Отказ от ответственности	11
ФОТОГРАФИИ	12
1 Amazing Grace profile	12
2	12
3	12
4	12
6	13
5	13
7	13
8	13
9	14
10	14
11	14
12	14
13	15
14	15
15	15
16	15
17	15
18	15
19	16
20	16
21	16
22	16
23	16
24	16

25	17
26	17
27	17
28	17
30	18
29	18
31	18
32	18
33	18
34	18
36	19
35	19
37	19
38	19
39	19
40	19
41	20
42	20
43	20
44	20
45	20
46	20
47	21
48	21
49	21
50	21
51	21
52	21
53	22

54	22
55	22
56	22
57	22
58	22
59	23
60	23
61	23
КОНТАКТЫ	24
Контактная информация	24
Телефоны	24
Время работы	24
Адрес	24

ХАРАКТЕРИСТИКИ

Обзор

Amazing Grace III is a 2006 40' Mainship offering twin Yanmar 240 HP main engines, Kohler 8 kW generator, Magnum inverter, Yachtcontroller remote control system, Sidepower bowthruuster, oil change system, FloScan fuel monitoring system, full flybridge Eisenglass enclosure, upper and lower helms and a 2 stateroom layout. She recently completed the Great Loop, so she is ready to go around again.

Основная информация

Тип судна: Траулер

Модельный год: 2006

Год постройки: 2006

Страна: United States

Размеры

Длина общая: 40' 0" (12.19m)

Ширина: 14' 2" (4.32m)

Макс. осадка: 3' 8" (1.12m)

Трапы: 12' 6" (3.81m)

Скорость, вместимость и масса

Крейс. скорость: 10 Kts. (12 MPH)

Макс. скорость: 17 Kts. (20 MPH)

Водоизмещение: 24000 Pounds

Вместимость воды: 130 Gallons

Вместимость сточного бака: 30 Gallons

Объем топливного бака: 300 Gallons

Размещение

Всего кают: 2

Всего коек: 3

Всего ком. состава: 1

Корпус и палуба

Материал корпуса: Fiberglass

Информация о двигателе

Двигатели: 2

Производитель: Yanmar

Модель: 4LHA-STP

Тип двигателя: Inboard

Тип топлива: Diesel

ПОДРОБНОЕ ОПИСАНИЕ

MAIN DESCRIPTION

Amazing Grace III is a 2006 40' Mainship offering twin Yanmar 240 HP main engines, Kohler 8 kW generator, Magnum inverter, Yachtcontroller remote control system, Sidepower bowthruster, oil change system, FloScan fuel monitoring system, full flybridge Eisenglass enclosure, upper and lower helms and a 2 stateroom layout. She recently completed the Great Loop, so she is ready to go around again.

40' MAINSHIP VESSEL WALKTHROUGH

From the fiberglass swimplatform, you enter the covered aftdeck via the transom gate and can then walk out either same-level side deck, step up the molded-in steps to the flybridge or step into the salon via the double aluminum and glass doors. Once inside the salon, you will find the galley to starboard, lower helm and side deck access door starboard forward, dinette port forward and sofa to port. Walk forward and step down into the companionway to find the head with enclosed shower to starboard, guest stateroom to port and master stateroom forward. The master stateroom has direct access to the head. The washer/dryer is under the companionway stairs. Engine room access is via a hinged salon sole hatch. The headroom in the salon is 6'7", 6'6" in the master stateroom, 6'3" in the guest stateroom, 6'6" in the shower, 7' on the aftdeck and 6'10" on the flybridge. The master stateroom berth is 6'3" long and the guest stateroom berths are 5'10" long.

40' MAINSHIP ACCOMMODATIONS

Amazing Grace III offers a master stateroom forward with an island queen size berth and a guest stateroom to port with side by side single berths. The head with enclosed shower is to starboard with direct access from the master stateroom.

40' MAINSHIP SALON

The salon offers double aluminum & glass doors, sliding screen door and curtains aft, opening side windows with blinds, opening center windshield, a sofa to port, dinette with two stools and a benchseat port forward, side deck access door starboard forward, vinyl Cherry sole and engine room access. To view a 360 degree photo of the salon, copy and paste the link below into your browser:

40' MAINSHIP GALLEY

The galley is located to starboard in the salon.- Nova-Kool refrigerator/freezer- Princess 3-burner

electric cooktop and broiler/oven- Tappan microwave oven- Stainless steel sink- Storage cabinets and drawers- Wine glass rack- Trash compartment- Jenn-Air grill on the sundeck- Vitrifrigo icemaker on the sundeck

40' MAINSHIP DINING

Dining space is available at the salon dinette and the flybridge fold-up table.

40' MAINSHIP MASTER STATEROOM

The master stateroom is forward and offers an island queen-sized berth, overhead hatch with Oceanair screen/shade, 2 portlights with Peek-A-Boo shades, reading lights, storage cabinets and drawers, cedar-lined hanging locker (converted with removable shelves), carpet, full-length mirror and direct access to the head. To view a 360 degree photo of the master stateroom, copy and paste the link below into your browser:

40' MAINSHIP GUEST STATEROOM

The guest stateroom is to port and offers side by side single berths, carpet, overhead hatch with screen, portlight with Peek-A-Boo shade, storage cabinets, cedar-lined hanging locker and reading light. To view a 360 degree photo of the guest stateroom, copy and paste the link below into your browser:

40' MAINSHIP LAUNDRY

- Splendide 2000S washer/dryer

40' MAINSHIP FLYBRIDGE

The flybridge offers a bimini, full Eisenglass enclosure, non-skid deck, centerline fold-up table, benchseat with storage to starboard, wrap-around benchseat with storage to port, three Garelick Eez-In helmseats, full helm forward, storage under the helm and custom chart table starboard forward. To view a 360 degree photo of the flybridge, copy and paste the link below into your browser:

40' MAINSHIP SUNDECK

The sundeck is aft of the flybridge and offers a wetbar with stainless steel sink, Jenn-Air grill, Vitrifrigo icemaker and storage aft, two deck chairs and removable table aft, hinged mast, stainless steel outboard davit aft and molded-in steps to the aftdeck. To view a 360 degree photo

of the sundeck, copy and paste the link below into your browser:

40' MAINSHIP AFTDECK

The covered aftdeck offers a non-skid deck, same level access to the side decks, double aluminum & glass doors to the salon, transom gate, transom storage, fold-down step each side, hot/cold fresh water shower and molded-in steps to the flybridge with storage underneath. To view a 360 degree photo of the aftdeck, copy and paste the link below into your browser:

40' MAINSHIP AUDIO/VISUAL EQUIPMENT

- Glomex TV antenna and controller- Philco SDTV tuner in the salon- Sole flat screen TV in the salon and master stateroom- Bose Home Theatre surround sound system- Bose interior speakers- Kenwood KMR-330 stereo/CD on the flybridge- Sony Marine exterior speakers

40' MAINSHIP ELECTRONICS

- Raymarine Radar- Vesper AIS transceiver (2017)- Raymarine E120 multi-function display on the flybridge- Raymarine E80 multi-function display at the lower helm- Raymarine ST6002 Smart Pilot autopilot on the flybridge and at the lower helm- Raymarine depth sounder on the flybridge (2018)- Uniden Oceanis DSC VHF on the flybridge with remote at the lower helm- Danforth magnetic compass on the flybridge and at the lower helm

40' MAINSHIP ENGINE/MECHANICAL EQUIPMENT

- Twin Yanmar 4LHA-STP 240 HP main engines- ZF 63-A gearboxes- ZF MicroCommander electronic engine controls- Faria gauges- Rudder angle indicators- Tides driplless shaft seals- SeaStar hydraulic steering system- Racor 900MA fuel filter with vacuum gauge for each main engine- Gulf Coast fuel polishing system- Racor R12P fuel filter for the generator- FloScan fuel monitoring system- Oil-X-Changer oil change system- Yacht Controller remote control docking system (Version 2.2) (2017)- Sidepower bow thruster- Bennett trim tabs- Marine Air Systems reverse cycle air conditioning/heating system (2 zones)- Jabsco Par-Max Plus 4 gpm fresh water system pump- Jabsco fresh water system accumulator tank- Wema water tank gauge- 6 gallon water heater- Walvac central vacuum system- Vacuflush head- Spare propeller

40' MAINSHIP DECK EQUIPMENT

- Lewmar anchor windlass with foot controls and remote at each helm- Rocna 44 lb anchor- Double stainless steel anchor roller- Stainless steel Sampson Post- Stainless steel rails- Stainless steel deck hardware- Non-skid decks- Bomar deck hatches- Washdown forward- Windshield covers- Mast spreader lights- Fiberglass swimplatform- Awlgrip Maroon painted hull

40' MAINSHIP TENDER

- Highfield D-200-HYP RIB tender- Yamaha 9.9 HP 4-stroke outboard- Custom stainless steel davit system- Stainless steel outboard davit on the flybridge

40' MAINSHIP SAFETY AND FIRE PROTECTION

- SeaFire 1301 Halon engine room and lazarette fire suppression systems- SeaFire emergency engine shut down system- Fire extinguishers- Safe-T-Alert carbon monoxide detectors- ACR Globalfix Pro EPIRB- ACR searchlight- Lifering- Lifejackets- Zodiac Coastal liferaft- Rule bilge pumps

40' MAINSHIP EXCLUSIONS

- Sellers' personal belongings

DISCLAIMER

The Company offers the details of this vessel in good faith but cannot guarantee or warrant the accuracy of this information nor warrant the condition of the vessel. A buyer should instruct his agents, or his surveyors, to investigate such details as the buyer desires validated. This vessel is offered subject to prior sale, price change, or withdrawal without notice.

Исключения

При продаже яхты исключаются личные вещи владельца.

Отказ от ответственности

Компания предоставляет описание судна или яхты добросовестно, но не может гарантировать точность этой информации, а также не ручается за техническое состояние. Покупатель должен проинструктировать своих агентов или оценщиков исследовать представленную информацию более подробно, по собственному желанию. Продажа судна или яхты, изменение цены или снятие с продажи будет происходить без предварительного уведомления.

ФОТОГРАФИИ

1 Amazing Grace profile



2



3



4



5



6



7



8



9



10



11



12



13



14



15



16



17



18



19



20



21



22



23



24



25



26



27



28



29



30



31



32



33



34



35



36



37



38



39



40



41



42



43



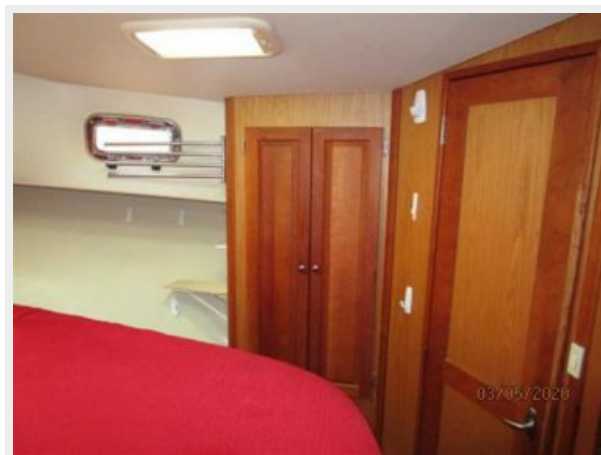
44



45



46



47



48



49



50



51



52



53



54



55



56



57



58



59



60



61



КОНТАКТЫ

Андрей Шестаков (Andrey Shestakov) – ведущий яхтенный брокер отдела продаж яхт и судов компании Shestakov Yacht Sales Inc. Официальный представитель Shestakov Yacht Sales Inc. для русскоговорящих клиентов в центральном офисе компании в Майами/Форт Лодердейл/Флорида/США.

Контактная информация

Email: andrey@shestakovyachtsales.com

Web: shestakovyachtsales.com

Телефоны

Краснодарский край: **+7(918)465-66-44**

США, Майами, Флорида: **+1(954)274-4435**

Время работы

Понедельник – Суббота: **9:00 - 21:00**
EDT

Воскресенье: **Закрито**

Адрес



Harbour Towne Marina, 850 NE 3rd St,
STE 213, Dania, FL 33004