

## NO NAME — SUNREEF



**Builder:** SUNREEF

**Year Built:** 2012

**Model:** Catamaran

**Price:** PRICE ON APPLICATION

**Location:** United States

**LOA:** 70' 0" (21.34m)

**Beam:** 33' 1" (10.08m)

**Min Draft:** 6' 1" (1.85m)

Our experienced yacht broker, Andrey Shestakov, will help you choose and buy a yacht that best suits your needs **No Name — SUNREEF** from our catalogue. Presently, at Shestakov Yacht Sales Inc., we have a wide variety of yachts available on our sale's list. We also work in close contact with all the big yacht manufacturers from all over the world.

If you would like to buy a yacht **No Name — SUNREEF** or would like help answering any questions concerning purchasing, selling or chartering a yacht, please call **+1(954)274-4435**

# TABLE OF CONTENTS

TABLE OF CONTENTS	2
SPECIFICATIONS	4
Overview	4
Basic Information	4
Dimensions	4
Speed, Capacities and Weight	4
Accommodations	5
Hull and Deck Information	5
Engine Information	5
DETAILED INFORMATION	6
PROPULSION	6
ELECTRIC	6
ELECTRONIC	6
TANK CAPACITY	7
PUMPS	7
APPLIANCES	7
ANCHORING & PROPELLER & TENDER	8
SAFETY	8
SOUND	8
SAIL & RIGGING	9
DETAILS EQUIPMENT LIST	9
Exclusions	15
Disclaimer	15
PHOTOS	16
Screen Shot 2020-03-16 at 4.38.22 PM	16
Screen Shot 2020-03-16 at 4.34.14 PM	16
Screen Shot 2020-03-16 at 4.38.11 PM	16
Screen Shot 2020-03-16 at 4.37.59 PM	16

---

Screen Shot 2020-03-16 at 4.37.06 PM	16
Screen Shot 2020-03-16 at 4.37.21 PM	16
Screen Shot 2020-03-16 at 4.37.28 PM	17
Screen Shot 2020-03-16 at 4.37.37 PM	17
Screen Shot 2020-03-16 at 4.37.00 PM	17
Screen Shot 2020-03-16 at 4.37.49 PM	17
Screen Shot 2020-03-16 at 4.36.52 PM	17
Screen Shot 2020-03-16 at 4.36.42 PM	17
Screen Shot 2020-03-16 at 4.36.30 PM	18
Screen Shot 2020-03-16 at 4.36.20 PM	18
Screen Shot 2020-03-16 at 4.35.28 PM	18
Screen Shot 2020-03-16 at 4.35.44 PM	18
Screen Shot 2020-03-16 at 4.36.03 PM	18
Screen Shot 2020-03-16 at 4.35.52 PM	18
Screen Shot 2020-03-16 at 4.35.21 PM	19
Screen Shot 2020-03-16 at 4.36.10 PM	19
Screen Shot 2020-03-16 at 4.35.09 PM	19
Screen Shot 2020-03-16 at 4.34.57 PM	19
Screen Shot 2020-03-16 at 4.34.45 PM	19
Screen Shot 2020-03-16 at 4.34.39 PM	19
Screen Shot 2020-03-16 at 4.34.27 PM	20
Screen Shot 2020-03-16 at 4.34.21 PM	20
Screen Shot 2020-03-16 at 4.34.33 PM	20
<b>CONTACTS</b>	<b>21</b>
Contact details	21
Telephones	21
Office hours	21
Address	21

---

---

# SPECIFICATIONS

---

## Overview

---

### LLC OWNED

It is a rare opportunity to be able to acquire an exceptional SUNREEF Sailing 70 Cruising Catamaran this part of the World.

The vessel has been shipped from the factory to FLL by the 1st owner and then she sailed to HI. She was sold to her present owner in 2015. She is back on the market.

Built by SUNREEF, the world leading large catamaran company in 2012, she is immaculate; "better than new" condition. She is and has been in constant care by her professional crew.

She is the owner version of the SUNREEF Sailing 70. The master suite covers an entire hull.

Layout: Owner Suite (1); VIP Cabins (2). Crew Cabin (1); Captain Quarter (1).

## Basic Information

---

**Category:** Catamaran

**Model Year:** 2012

**Year Built:** 2012

**Country:** United States

## Dimensions

---

**LOA:** 70' 0" (21.34m)

**LWL:** 68' 5" (20.85m)

**Beam:** 33' 1" (10.08m)

**Min Draft:** 6' 1" (1.85m)

## Speed, Capacities and Weight

---

**Water Capacity:** 400 Gallons

**Holding Tank:** 108 Gallons

**Fuel Capacity:** 1600 Gallons

---

## Accommodations

---

**Total Cabins:** 3

---

## Hull and Deck Information

---

**Hull Material:** Fiberglass

---

## Engine Information

---

**Engines:** 2

**Manufacturer:** Yanmar

**Model:** 6 BY2-260

**Engine Type:** Inboard

**Fuel Type:** Diesel

---

# DETAILED INFORMATION

---

## PROPULSION

---

- YANMAR 6BY2-260 PORT ENGINE
- YANMAR 6BY2-260 STARBOARD ENGINE
- YANMAR KMH50A PORT GEARBOX
- YANMAR KMH50A STARBOARD GEARBOX
- MAX POWER CT 225 BOW THRUSTER 250MM 440KG THRUST
- MAX POWER CT 225 BOW THRUSTER 250MM 440KG THRUST
- 

## ELECTRIC

---

- ONAN 19KW 220V 50HZ PORT GENERATOR
- ONAN 19KW 220V 50HZ STARBOARD GENERATOR
- MARINE AIR MCGVLP 72,000 CHILLER
- MARINE AIR VARIES AIR HANDLERS 9 UNITS
- MARINE AIR UVTUBE4 UV AIR PURIFIERS 9 UNITS
- SEA RECOVERY AQUAWHISPER 220L/HR REVEARSE OSMOSIS
- DOMETIC ESKIMO ICESHAVE ICE MAKER 600LB/24HR
- SUPERWIND 350W350 WATT WIND GENERATOR (SUPER SILENT)
- SUPERWIND350W350 WATT WIND GENERATOR (SUPER SILENT)
- RDK140W X 4560 WATT RIGID SOLAR PANEL ARRAY W MASTERVOLT CHARGE MASTER

## ELECTRONIC

---

- FURUNOT Z15GPS NAVIGATION PLOTTER TOUCH SCREEN
- FURUNOT Z15GPS NAVIGATION PLOTTER TOUCH SCREEN
- FURUNO CH300 85/215HZ DUAL FREQ SONAR
- FURUNO NAVPILOT 700 AUTOPILOT
- FURUNOF1501 WIND INDICATOR
- FURUNO FM2721VHF RADIO TELEPHONE
- FURUNO FI503 TRIDATA
- FURUNO DFF1 DIGITAL FISHFINDER
- FURUNO DRS4D4 KW UHD RADAR DOME 24"
- FURUNO FA50AIS CLASS B TRANSPONDER ALL NAV LIGHTING LED BULBS
- WAVEEC-HP1 WATT 2.4GHZ 12 MILE WIFI EXTENDER
- KVHF B250 TRACPHONE INMARSAT SATELLITE BROADBAND

## TANK CAPACITY

---

- SUNREEF 3000L PORT FUEL TANK
- SUNREEF 3000L STARBOARD FUEL TANK
- SUNREEF 137L STARBOARD BLACKWATER
- SUNREEF 137L PORT BLACKWATER
- SUNREEF 750L STARBOARD FRESH WATER SUNREEF 750L PORT FRESH WATER

## PUMPS

---

- RULE RU 122000 GPH 24V
- RULE RU122000 GPH 24V
- WHALE WH BP2054 ALL SHOWER SUMPS (4 EA) 5GPM 24V
- JABSCO JA34600-0010 10.8 GPM 24V DIAPHRAM BILGE PUMP
- JABSCO JA34600-0010 10.8 GPM 24V DIAPHRAM BILGE PUMP
- JABSCO 23870-13009 GPM 24 V DIESEL FUEL TRANSFER PUMP
- JABSCO 23870-13009 GPM 24 V DIESEL FUEL TRANSFER PUMP (TENDERFILL)
- JABSCO 23870-13009 GPM 24 V DIESEL FUEL TRANSFER PUMP
- GIANNESCHI ECOINO X 214.5 GPM 24V FRESHWATER PUMP
- GIANNESCHI ECOINO X 214.5 GPM 24V FRESHWATER PUMP

## APPLIANCES

---

- SIEMENS IQ700-FI24NP30 320L BUILT IN FREEZER 220V 50/60HZ
- SIEMENS IQ700-CI30RP00 320L BUILT IN REFRIDGERATOR 220V 50/60HZ
- SIEMENS IQ700-EH975SZ11E FLEXINDUCTION HOB COOK TOP 5 ZONES 220V 50/60HZ
- SIEMENS IQ700-ET475MY11E DOMINO TEPPAN YAKI COOK TOP 220V 50/60HZ
- SIEMENS IQ700-HB36D572B COMPACT 45 STEAM HOT AIR OVEN 220V 50/60HZ
- SIEMENS IQ700-HB86P572B COMPACT 45 PYRO KLEAN MICROWAVE/OVEN 220V 50/60HZ
- SIEMENS IQ700-HB78AB570BCOMPACT45 PYRO KLEAN OVEN 220V 50/60HZ
- SIEMENS HW1406P2BWARMING DRAWER 220V 50/60HZ
- SIEMENS SN66T092GB60CM SS DISHWASHER 220V 50/60HZ
- SIEMENS IQ700 COMPACT WASHING MACHINE
- SIEMENS IQ700 COMPACT CONDENSOR DRYER
- KENWOOD KMO70 KITCHEN CHEF COOKING MACHINE INDUCTION MIXER/COOKERICE MAKER.
- NESSPRESSO ESSPRESSO MAKER
- MODENA SPA BATH W/CHROMOTHEROPY /JETS/BUBBLES /MUSIC/AROMATHEROPY

---

## ANCHORING & PROPELLER & TENDER

---

- WILLIAMS 445DJ DIESET JET TENDER 7 PASS
- VARIPROP DF-1404 BLADE FEATHERING PROPELLER
- SEA VISION SV-10PLASMA UNDERWATER LIGHTS 23,000 LUMENS 30,000HR LIFE (6 EA)
- QUICKLINE UA80 ULTRA ANCHOR SS 80KG
- QUICK LINE UAS20 ULTRA SWIVEL
- QUICKLINE UA27 ULTRA ANCHOR SS 27KG STERN
- QUICKLINE UA05 ULTRA ANCHOR SS 5KG TENDER
- CQR GALV STEEL PLOW ANCHOR 60KG
- FORTRESS FX125 PORTABLE ALUMINUM 69LB ANCHOR
- FORTRESS FX55 PORTABLE ALUMINUM 32LB ANCHOR
- PARATECH DELTA-96 96 IN DROGUE 350 FT 5/8 LINE
- PARATECH DELTA-9696 IN DROGUE 350 FT 5/8 LINE
- PARATECH PARA1818FT DIA PARACHUTE ANCHOR 600FT 1 IN WITH 100FT 1 IN BRIDLE

---

## SAFETY

---

- QUICKLINE QL3060 60 M 30MM SAFETY LINE REELS 3,000KG BREAKING
- QUICKLINE QL306060 M 30MM SAFETY LINE REELS 3,000KG BREAKING
- 2 EACH 8 MAN LIFERAFT
- ACR GLOBALFIX CAT1 EPIRB WITH GPS
- WEST MARINE 4 EACH OFFSHORE USCG INFLATABLE LIFEVEST W/HARNESS
- ACR AQUALINK PERSONAL LOCATING BEACON 406 GPS
- VARIES ALL REQUIRED USCG FLARES, SMOKE, LIFEJACKETS, BELL, HORN, FIRE DEVICES.

---

## SOUND

---

- MARANTZ STEREO AMPLIFIER
- MARANTZ BLUERAY SAMSUNG 46 IN LEDTV
- HARMON SPEAKERS
- BOSE OUTSIDE SPEAKERS
- TV MASTER CABIN
-



---

## SAIL & RIGGING

---

- Carbon Mast with incorporate LED light
- Carbon boom
- Plastic protection on the shrouds
- Lazy jack
- Fully battened mainsail hydranet tri-radial cut
- Hydranet genoa, mixed dacron/spectra
- Mast steps up to boom
- Gennaker polyester
- Complete gear for gennaker
- Electric furling system for genoa

---

## DETAILS EQUIPMENT LIST

---

### CONSTRUCTION

- Hulls, deck, flybridge and all structural bulkheads constructed of glass/ vinyl ester sandwich laminate with carbon reinforcement by infusion process
- Rudders constructed of molded glass/ vinyl ester. Rudder stock are in aluminum alloy
- Extended re-enforced longitudinal beam
- Catwalk fitted on the forward beam
- Aft platform

### RIGGING AND SAILS

- Carbon mast with incorporated LEDs
- Carbon boom
- Plastic protection on the shrouds
- Lazy jack
- Fully battened mainsail hydranet tri-radial cut
- Hydranet genoa, mixed dacron/spectra
- Mast steps up to boom
- Gennaker polyester
- Complete gear for gennaker

- Electric furling system for genoa

## MECHANICS

- 2 complete engines 260HP (Yanmar 6BY2-260)
- Port engine 1200 hours.
- Starboard engine 1190 hours.
- 2x Yanmar KMH50A gearbox
- port gearbox 1200 hours.
- Starboard gearbox 1109 hours.
- Pair of four-bladed feathering propellers (VARIPROP DF-140)

## GENERAL

- Stainless steel shafts
- 2 engine speed controls (one at the navigation table and one on the flybridge)
- 2 electric pump + 1 manual for fuel tanks
- 2x JABSCO 23870-1300 9GPM 24V Diesel Fuel Transfer Pump
- Lights in the engine rooms
- Consumption estimation system (Yanmar Digital engine displays)
- 2x electric bow thrusters (by Max Power CT225, bow thruster 250 mm 440kg thrust)
- 2x 3000L fuel tanks

## DECK GEAR

- Bow pulpits with integrated teak seats
- Gangway
- Lewmar port lights
- Swim ladder on the skirts
- Hull side ladder in bow
- Winches
- Blocks and jammers

- Genoa manual furler.
- Deck light.
- Electric lifting system for the dinghy with extendable arms and remote controller
- Hatch at the top of the stairway between cockpit and flybridge
- Freshwater hose retrieval & storage system with spray nozzle in chain locker
- 2 fresh water outlets at the bottom of the mast and in the cockpit
- Mainsail electric winch
- 2 primary electric winches
- Bimini on the flybridge (stainless steel)
- 2 additional lights for the flybridge + separate switch
- 4 extra waterproof speakers in the cockpit and flybridge by BOSE
- Self-aligning lower and top bearings
- 5 strokes steering wheel (diameter 1000 mm)
- Hydraulic steering system
- 2 emergency tillers

## ELECTRICAL SYSTEM

- AC-230V: Main panel extension, 3 chargers (24V/100A), Inverter (24V/5000W), two 230V sockets in cabins, additional sockets in saloon galley
- DC-24V: Main panel extension, Battery monitoring, 12 house batteries (24V/1200Ah), starting batteries
- 110V shore connection kit
- 2x Generator 19KW 220V 50HZ
- LEDs on the skirts, cockpit and flybridge

## STEERING SYSTEM

- Port generator 980 hours (Approx)
- STBD generator 827 hours (Approx)
- 2x350w wind generator Ultra quiet
- 4x solar poer 140w

---

## LIGHTING

- Navy led domotic system for lights, controls and D/C system, including lights for ceiling lights
- Interior lighting with LED lamps
- Navigation lights with LED lamps
- 6x underwater lights (Plasma 23,000 Lumens with 30,000-hour life by SEA VISION)

## NAVIGATION AND ELECTRONICS

- Furuno TZ 15 GPS Navigation Plotter Touch Screen (Flybridge) o Furuno TZ 15 GPS Navigation Plotter Touch Screen (Saloon)
- Furuno CH300 85/215HZ Dual Freq Sonar (Flybridge/Saloon)
- Furuno NAVPILOT 700 Autopilot (Flybridge/Saloon)
- Furuno F1501 WIND INDICATOR (Flybridge/Saloon)
- Furuno FI503 TRIDATA (Flybridge/Saloon)
- Furuno DFF1 DIGITAL FISHFINDER (Flybridge/Saloon)
- Furuno DRS4D 4KW UHD RADAR DOME 24" (Mast)
- Furuno FA50 AIS CLASS B TRANSPONDER/RECEIVER (saloon) o All navigation lighting LED
- KVH FB250 Tracphone Inmarsat Satellite Broadband
- Yacht controller (remote controller for engines, windlass and bow thrusters)
- WiFi extender
- Fishfinder

## PLUMBING

- Freshwater: 2x 750L equipped with level indicators, 2 pressurized pumps (GIANNESCHI ECOINOX2 14.5GPM 24V), 2 water heaters of 80L each
- Blackwater: 2x 137L with discharge system, 2 electric pumps with automatic discharge equipped with 3-way valves (discharge in the sea or holding tanks)
- All renewed bilge pumps:
- RULE RU12 2000 GPH 24V (port)

- RULE RU12 2000 GPH 24V (starboard)
- WHALE WH BP2054 All Shower Sumps (4EA) 5 GPM 24V
- JABSCO JA34600-0010 10.8GPM 24V Diaphragm Bilge Pump (port engine room)
- JABSCO JA34600-0010 10.8GPM 24V Diaphragm Bilge Pump (starboard engine room)
- 2 manual bilge pumps
- 2 hand showers on deck
- Watermaker 220L/h – 220V (Sea Recovery Aquawhisper reverse osmosis with 425 hours by June 2014)
- Electric 24V toilets in bathrooms with fresh water flush
- Air conditioning 72 000 BTU (Marine Air MCGVLP 72,000)
- 2049 hours (June 2014)
- Plus UV sterilizers in AC air handlers
- Plus UV sterilizers in AC air handlers

## COMFORT ON BOARD

- Curtains on all cabin portlights and saloon windows
- Electrically recessed skyscreen blinds in the saloon (manual in the cabins)
- Manually concealed skyscreen on cabin ceiling hatches with anti-mosquito screens
- Stainless steel sliding entrance door

## ELECTRICAL APPLIANCES

- Washing machine (Siemens IQ700)
- Condenser Dryer (Siemens IQ700)
- Air conditioning 72 000 BTU (Marine Air MCGVLP 72,000)
- 320L built-in freezer (Siemens IQ700)
- 20L built-in refrigerator (Siemens IQ700)
- Induction cooktop with 5 zones (Siemens IQ700)
- Teppan-Yaki coop top (Siemens IQ700)
- Dishwasher (Siemens IQ700)
- Microwave with oven function (Siemens IQ700)
- Warming drawer (Siemens IQ700)
- Electric oven (Siemens IQ700)
- Kitchen Chef Cooking machine (Induction mixer/cooker by Kenwood)

- Cooker hood (Siemens IQ700)
- Nespresso Espresso Maker
- Ice maker
- Wine cooler for 32 bottles (Siemens)
- Refrigerator in cockpit
- MODENA SPA bathtub with Hydrotherapy, Chromotherapy, and Ozone Therapy functionality in owner cabin

## LEISURE ITEMS

- Widescreen LCD TV in salon (40")
- Hi-Fi Pack: Marantz (salon)
- LCD TV 20" + DVD/CD player in owner cabin
- Air TV antenna

## DIVING EQUIPMENT

- Williams 445 DieselJet with 35hours as of June 2014
- Plus tender fueling system
- 10' inflatable tender with Daihatsu 9HP outboard engine
- Large custom safe
- 600 lbs/ day ice machine (Dometic Eskimo Ice Shave Ice Maker)
- Gas grill

## SAFETY EQUIPMENT

- Automatic fire extinguishing system in the engine rooms
- Complete safety equipment pack: 2 life rafts for 8 people, rescue equipment (16 lifejackets, first aid kit, flares, lifebuoy, signal mirror, wooden plugs, flag set, fog horn), set of fire extinguishers
- Satellite tracking system with movement detection and anti-intrusion alarm (excluding fees)
- EPIRB with GPS

## MOORING AND TOOLD

- Windlass 3000W 24V
- CQR anchor 66kg
- Additional anchor 20kg + 20m galvanized chain (diameter 10mm)
- Mooring kit (8 inflatable fenders with neoprene covers + 4 mooring ropes)
- SS Ultra Anchor Bow
- SS Ultra Anchor Stern
- SS safety lines
- Drough with 350' line (2 Ea)
- Sea anchor with 600' line (plus spare high strength 9/16 line 600' for halyards, sheets)
- Safety line with reels

---

## SPARE PARTS

- All imaginable spare parts in double such as for engines, generators, fuel, and water systems

## GENERAL INFORMATION

- Year launched: 2012 Flag: US (United States Import taxes paid) Current location: Honolulu, Hawaii Availability: Now
- Rudders constructed of molded sandwich lamination glass/ vinyl ester

---

## Exclusions

Owner's personal belongings.

---

## Disclaimer

The Company offers the details of this vessel or yacht in good faith but cannot guarantee or warrant the accuracy of this information nor warrant the condition of the vessel. A buyer should instruct his representatives, agents, or his surveyors, to investigate such details as the buyer desires validated. This vessel or yacht is offered subject to prior sale, price change, or withdrawal without notice.

# PHOTOS

Screen Shot 2020-03-16 at 4.34.14 PM



Screen Shot 2020-03-16 at 4.38.22 PM



Screen Shot 2020-03-16 at 4.38.11 PM



Screen Shot 2020-03-16 at 4.37.59 PM



Screen Shot 2020-03-16 at 4.37.06 PM



Screen Shot 2020-03-16 at 4.37.21 PM





Screen Shot 2020-03-16 at 4.37.28 PM



Screen Shot 2020-03-16 at 4.37.37 PM



Screen Shot 2020-03-16 at 4.37.00 PM



Screen Shot 2020-03-16 at 4.37.49 PM



Screen Shot 2020-03-16 at 4.36.52 PM



Screen Shot 2020-03-16 at 4.36.42 PM



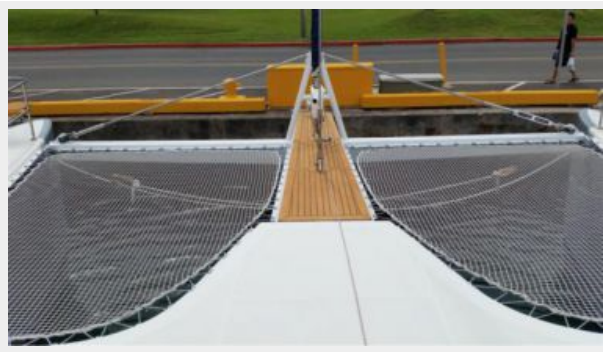
Screen Shot 2020-03-16 at 4.36.30 PM



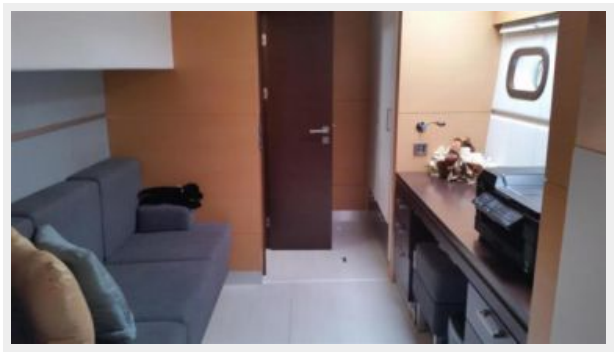
Screen Shot 2020-03-16 at 4.36.20 PM



Screen Shot 2020-03-16 at 4.35.28 PM



Screen Shot 2020-03-16 at 4.35.44 PM



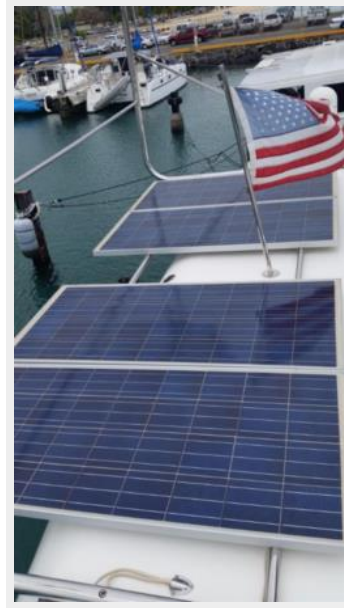
Screen Shot 2020-03-16 at 4.35.52 PM



Screen Shot 2020-03-16 at 4.36.03 PM



Screen Shot 2020-03-16 at 4.35.21 PM



Screen Shot 2020-03-16 at 4.36.10 PM



Screen Shot 2020-03-16 at 4.35.09 PM



Screen Shot 2020-03-16 at 4.34.57 PM



Screen Shot 2020-03-16 at 4.34.45 PM



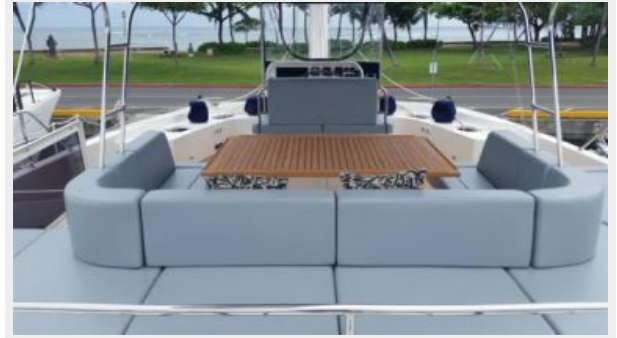
Screen Shot 2020-03-16 at 4.34.39 PM



Screen Shot 2020-03-16 at 4.34.21 PM



Screen Shot 2020-03-16 at 4.34.27 PM



Screen Shot 2020-03-16 at 4.34.33 PM



# CONTACTS

---

Andrey Shestakov, leading yacht broker of the sales department of Shestakov Yacht Sales Inc. Shestakov Yacht Sales Inc., the official representative of the Miami/Fort Lauderdale FL headquarters.

## Contact details

---

Email: [andrey@shestakovyachtsales.com](mailto:andrey@shestakovyachtsales.com)

Web: [shestakovyachtsales.com/en/](http://shestakovyachtsales.com/en/)

## Telephones

---

USA: +1(954)274-4435

## Office hours

---

Monday – Saturday: **9:00 - 21:00** EDT

Sunday: **closed**

## Address

---



Harbour Towne Marina, 850 NE 3rd St,  
STE 213, Dania, FL 33004