

AQUA LIFE — HORIZON



Builder: HORIZON

Year Built: 2014

Model: Motor Yacht

Price: PRICE ON APPLICATION

Location: United States

LOA: 91' 6" (27.89m)

Beam: 20' 0" (6.10m)

Min Draft: 5' 10" (1.78m)

Cruise Speed: 18 Kts. (21 MPH)

Max Speed: 23 Kts. (26 MPH)

Our experienced yacht broker, Andrey Shestakov, will help you choose and buy a yacht that best suits your needs **Aqua Life — HORIZON** from our catalogue. Presently, at Shestakov Yacht Sales Inc., we have a wide variety of yachts available on our sale's list. We also work in close contact with all the big yacht manufacturers from all over the world.

If you would like to buy a yacht **Aqua Life — HORIZON** or would like help answering any questions concerning purchasing, selling or chartering a yacht, please call **+1(954)274-4435**

TABLE OF CONTENTS

TABLE OF CONTENTS	2
SPECIFICATIONS	5
Overview	5
Basic Information	5
Dimensions	5
Speed, Capacities and Weight	6
Accommodations	6
Hull and Deck Information	6
Engine Information	6
DETAILED INFORMATION	7
Overview	7
Interior Decor	7
Salon	7
Galley	7
Crew Quarters	8
Entertainment Equipment	8
Communication and Navigation	9
Forward and Aft Decks	9
Flybridge and Boat Deck	10
Mechanical	11
Ancillary Equipment	11
Electrical Equipment	12
Exclusions	12
Disclaimer	12
PHOTOS	14
Aqua Life 3	14
Aqua Life 2	14
Side Profile	14

Bow Seating and Sunpad	14
Flybridge Serving Bar	14
Flybridge	14
Flybridge	15
Upper Helm	15
Walkaround	15
Aft Deck	15
Aft Deck Serving Bar	15
Main Salon	15
Formal Dining	16
Formal Dining	16
Galley	16
Galley	16
Lower Mini Helm	16
Country Kitchen	16
Stairwell	17
Lower Guest Companionway	17
Master Stateroom	17
Master Stateroom	17
Master Stateroom	17
Master Stateroom	17
Stbd Guest Stateroom	18
Master Stateroom Head	18
Port Guest Stateroom	18
VIP	18
Crew Quarters	19
Crew Quarters	19
Crew Quarters	19
Engine Room	19

Aqua Life Layout	20
Engine Room	20
CONTACTS	21
Contact details	21
Telephones	21
Office hours	21
Address	21

SPECIFICATIONS

Overview

This 2015 Horizon E84 motoryacht Aqua Life offers features normally seen on larger vessels but she can be operated with a smaller crew and/or by knowledgeable owner-operators. She is a one-owner yacht that has been meticulously maintained by her full time crew. Numerous indoor and outdoor spaces - including the salon and formal dining areas, open flybridge and aft deck provide flexible options for entertaining guests, and her comfortable four stateroom layout ensures there will be no complaints while on board. A mini lower helm compliments the main helm on the flybridge and is in prime location on the forward main deck, while still allowing room for a very comfortable dinette seating design. Ideally suited for cruising in the Bahamas, this Horizon E84 promises the luxury, function and excitement that you have been searching for in a yacht.

Basic Information

Category: Motor Yacht

Sub Category: Flybridge

Model Year: 2015

Year Built: 2014

Country: United States

Vessel Top: Hardtop

Fly Bridge: Yes

Dimensions

LOA: 91' 6" (27.89m)

LWL: 71' 11" (21.92m)

Beam: 20' 0" (6.10m)

Min Draft: 5' 10" (1.78m)

Clearance: 30' 8" (9.35m)

MFG Length: 84' 0" (25.60m)

Speed, Capacities and Weight

Cruise Speed: 18 Kts. (21 MPH)

Max Speed: 23 Kts. (26 MPH)

Displacement: 156000 Pounds

Water Capacity: 420 Gallons

Holding Tank: 200 Gallons

Fuel Capacity: 2250 Gallons

Accommodations

Total Cabins: 4

Total Berths: 6

Sleeps: 8

Total Heads: 4

Crew Cabin: 2

Crew Berths: 4

Crew Sleeps: 4

Crew Heads: 2

Hull and Deck Information

Hull Material: Fiberglass

Deck Material: FRP

Hull Finish: Fiberglass

Engine Information

Engines: 2

Manufacturer: CAT

Model: C32

Engine Type: Inboard

Fuel Type: Diesel

DETAILED INFORMATION

Overview

This 2015 Horizon E84 motoryacht Aqua Life offers features normally seen on larger vessels but she can be operated with a smaller crew and/or by knowledgeable owner-operators. She is a one-owner yacht that has been meticulously maintained by her full time crew. Numerous indoor and outdoor spaces - including the salon and formal dining areas, open flybridge and aft deck provide flexible options for entertaining guests, and her comfortable four stateroom layout ensures there will be no complaints while on board. A mini lower helm compliments the main helm on the flybridge and is in prime location on the forward main deck, while still allowing room for a very comfortable dinette seating design. Ideally suited for cruising in the Bahamas, this Horizon E84 promises the luxury, function and excitement that you have been searching for in a yacht!

Interior Decor

- Guest accommodations include master stateroom, port twin cabin, stbd bunk cabin & VIP cabin
- Crew area has 2 x staterooms w/ head, crew galley & dinette, w/ access from salon & transom
- South American Walnut, semigloss for main wood
- Custom luxury soft goods & lighting package
- Day head in main salon

Salon

- Custom granite floor at salon entrance
- Leather L-shaped sofa, loveseat & chair
- Custom coffee table & ottomans
- Wine cooler
- Custom dining table w/ leaf insert & 6 x chairs
- Custom Hi/Lo glass screen separating salon & galley

Galley

- Silestone countertops & country kitchen tabletop
- Subzero full height refrigerators w/ freezer drawers
- Extra Subzero freezer drawers
- GE Cooktop, oven & microwave

- GE Dishwasher
- Broan trash compactor

Crew Quarters

- Kenyon cooktop
- Norcold fridge/freezer
- GE microwave
- GE stacked washer/dryer
- 2 stateroom/2 head layout which sleeps up to 4 crew

Entertainment Equipment

- Panasonic PBX telephones w/ intercom feature in salon, PH, master, VIP & crew mess other cabins have outlets
- Exterior connector for shore phone & TV
- KVH HD7 satellite TV antenna & dummy dome
- Wifi booster system w/ wireless routers

Aft Deck

- 32" LCD TV
- Bose Lifestyle SA3
- stereo system

Salon

- 46" LCD TV
- Bose Lifestyle V35 home theater system w/ iPod dock
- Blu-ray player

Galley

- 28" LCD TV
- Bose Lifestyle SA3 stereo system

Master Stateroom

- 40" LCD TV
- Bose Lifestyle 135 home theater system w/ iPod dock
- Blu-ray player

VIP Stateroom

- 32" LCD TV

- Bose Lifestyle 135 home theatre system w/ iPod dock
- Blu-ray player

Port Twin Guest Stateroom

- 28" LCD TV
- Fusion stereo system

Crew Quarters

- 28" LCD TV (port cabin & mess)
- Fusion stereo system

Flybridge

- Bose Lifestyle SA3 home theatre system

Communication and Navigation

- Garmin 8000 navigational system
- GPSMAP 8208 MDF 8" multifunction display
- GMI 20 Digital Marine instrument display
- GHS 10 handset
- GHC 20 helm control unit & course computer unit
- GARMIN 8000 navigational system
- 3 x GPSMAP 8215 MDF 15" multifunction displays
- GMR 624 HD open array radar 6kW, 72nm
- GMR 1226 HD open array radar 12kW, 72nm
- GXM Satellite weather antenna
- 2 x 300 Marine VHF's
- AIS 600 Class B Transceiver
- GHC 20 Marine Autopilot control unit
- GHP 20 Marine Autopilot system w/ smart pump
- GRF 10 Garmin rudder feedback
- GMI 20 Digital Marine instrument display w/ gWind transducer depth, speed & temp transducer
- GND 10 Black box bridge
- GNT 10 NMEA 2000 transceiver
- Marine WiFi adapter kit

Forward and Aft Decks

- Nonskid forward deck
- Frameless windows, tinted, tempered & laminated glass

- Low-E glass for front windshield
- Custom-designed large “H” window in Master
- Solid S/S rub rail around upper hull side
- 18 x S/S storm covers for portlights
- 2 x Maxwell VWC3500 vertical hydraulic anchor winches
- 2 x High tensile 1/2 inch, 250ft anchor chains
- 2 x Chain counters in flybridge
- 2 x Aritex CQR plough anchors, 80kg
- Freshwater anchor chain washdown
- Heavy-duty S/S 2” handrail w/ 1 1/4” stanchions
- 2 x Deckhouse side entrance doors
- 4 x FRP bulwark side doors
- Fwd sunpads & bench seating bow teak step w/ cushion
- Fwd deck storage lockers for fenders & lines
- Teak aft deck, swim platform & teak steps
- S/S Sliding door for main salon, self-locking
- Custom aft deck Hi/Lo dining table
- Aft deck bar w/ sink, ice maker & fridge
- Aft deck electric folding TV cabinet
- Hydraulic Hi/Lo swim platform, 1500 lb capacity
- S/S gate doors from aft deck to swim platform
- Built-in hot/cold water shower at swim platform
- 8 x S/S sockets on swim platform for removable handrails

Flybridge and Boat Deck

- Nonskid flybridge & boat deck
- Stainless Steel Rails around boat deck
- Oversize drains with strainer on each corner w/ internal overboard drains
- Custom bar w/ sink, fridge & icemaker
- 3 x Custom stainless steel bar stools
- Propane BBQ in boat deck cabinet
- Corian countertops
- Custom U-shaped seating & teak dining table
- Hatch on the hardtop
- 2 x Tokai search lights
- Buell air horns on top of radar arch
- Hydraulic dinghy davit Steelhead SM2000
- Fully air-conditioned bridge
- Helm console w/ full set engine gauges monitoring system for impt. equipment magnetic compass fuel & water gauges nav lights camera system for aft deck & ER & 2 helm chairs

Mechanical

- Twin CAT C32A 1600HP diesel engines w/ reduction gears
- CAT 1000 Hour service recently completed
- Stainless steel Shafts Aquamet 22HS
- 5-Blade propellers
- Main & intermediate bronze struts w/backing plates
- Shaft & rudder packing glands w/ Tides Marine seals
- Glendinning engine controls w/ backup system
- Hynautic power steering system
- Stainless steel Rudder w/ zinc plates
- Stainless steel Emergency tiller in rudder cabin
- Hydraulic ABT bow & stern thrusters, 38HP
- Zero Speed Stabilizer 300/9X
- Stainless steel Hydraulic trim tabs
- Underwater exhaust system for engines w/ mufflers
- Engine compartment ventilation blowers
- Engine mounts on S/S engine bed bonded to FRP hull girder
- Fire insulation & insulated ER door
- Engine alarm system for low oil pressure & high-water temp
- Air compressor
- Central vacuum cleaner
- Mini lower helm w/ controls & display screens on main deck
- Third docking station on aft deck port side

Ancillary Equipment

- Chilled water Marine Air conditioning backup A/C circulation pump
- Aluminum fuel tanks w/sight & electric gauges, 2,250 gallon
- Dual Racor 75/1000 MA fuel filters/water separator, each engine
- Fuel transfer pump
- RACOR 500MA fuel filter for each generator
- Reverso FPS210 fuel polishing system
- Oil change pump system for engines & generator
- Fiberglass water tanks, 420 gallon
- Sea Recovery AQM water maker, 900 gal/day
- High-volume AC freshwater pressure pump & back up DC pump
- Fresh water charcoal filters in main supply pipe & galley
- Marine grade lines for freshwater system
- 2 x 30 Gallon water heaters
- Hot water circulation pump
- Hamann sanitary waste treatment system
- Tecma toilet system

- Holding tank w/macerator pump, 200 gallon
- Sump tank, 100 gallon
- “Y” Valve for holding tank with deck fitting for dockside pump out
- Five electric RULE bilge pumps
- 2 x Manual bilge pumps in ER & forward cabin
- High water level alarm for bilges
- Fire insulation in ER
- Integrated fire alarm system in PH w/ detectors in each cabin
- Fixed fire extinguisher (FM200) for ER w/ remote control
- Auto shutdown system & automatic fire damper system
- 4 x Portable fire extinguishers in recessed lockers

Electrical Equipment

- LED interior & exterior lighting system
- Maretron monitoring & control system
- 2 x Onan 32kW generators w/ sound shield, Hours: Port 3250 Stbd 3250 as of March 2020
- 100A shore power system
- 2 x 100A cable masters
- 2 x 100A ISO boost transformers
- Emergency power package & lighting system
- 2 x House battery inverter/chargers
- Vapor proof battery switch
- 4 x 255Ah AGM start batteries for engines/generators
- 8 x 210Ah AGM batteries for ships DC 24V service power
- 2 x 210Ah emergency batteries w/ dedicated charger
- GFI protection for all AC outlets in heads, galley & ER
- Electrolysis bonding system
- Cathodic protection w/ zinc anodes for shafts, struts, etc
- 4 x Underwater lights
- 2 x Stern docking lights

Exclusions

Owner's personal belongings.

Disclaimer

The Company offers the details of this vessel or yacht in good faith but cannot guarantee or warrant the accuracy of this information nor warrant the condition of the vessel. A buyer should instruct his representatives, agents, or his surveyors, to investigate such details as the buyer desires validated. This vessel or yacht is offered subject to prior sale, price change, or withdrawal

without notice.

PHOTOS

Aqua Life 3



Aqua Life 2



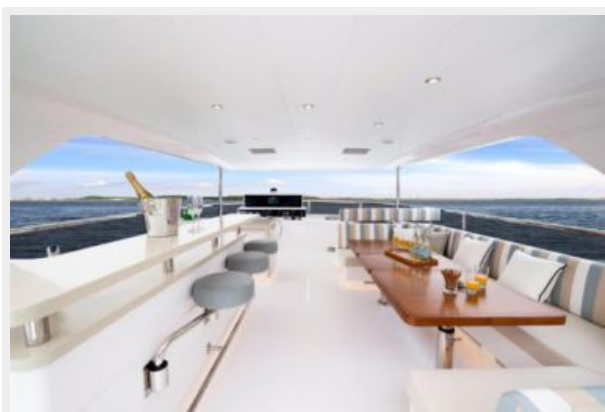
Side Profile



Bow Seating and Sunpad



Flybridge Serving Bar



Flybridge



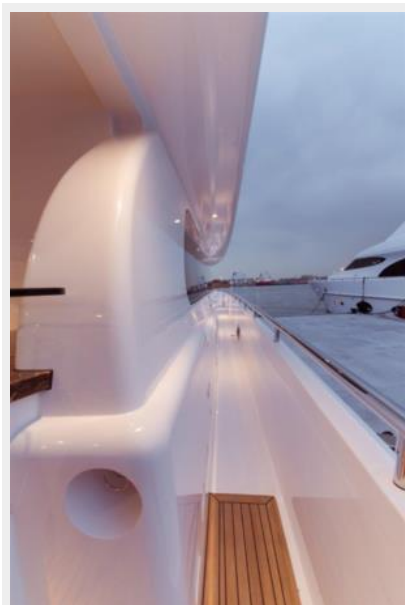
Flybridge



Upper Helm



Walkaround



Aft Deck



Aft Deck Serving Bar



Main Salon



Formal Dining



Formal Dining



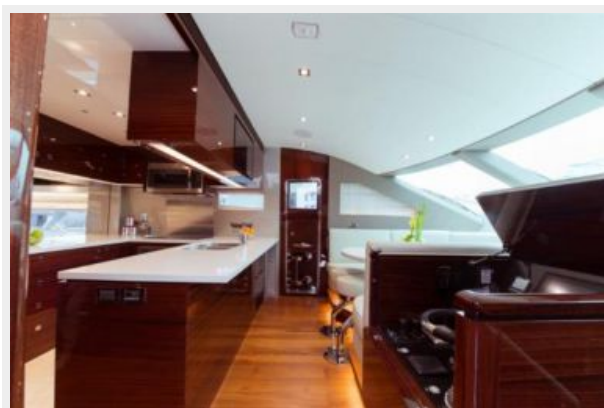
Galley



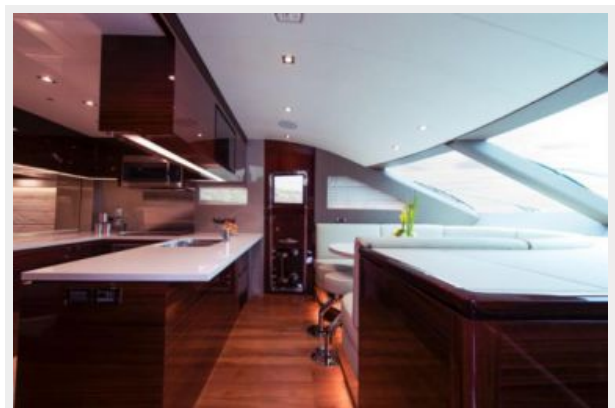
Galley



Lower Mini Helm



Country Kitchen



Stairwell



Lower Guest Companionway



Master Stateroom



Master Stateroom



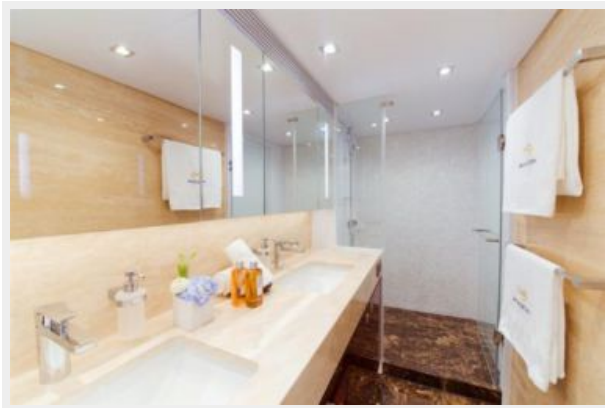
Master Stateroom



Master Stateroom



Master Stateroom Head



Stbd Guest Stateroom



Port Guest Stateroom



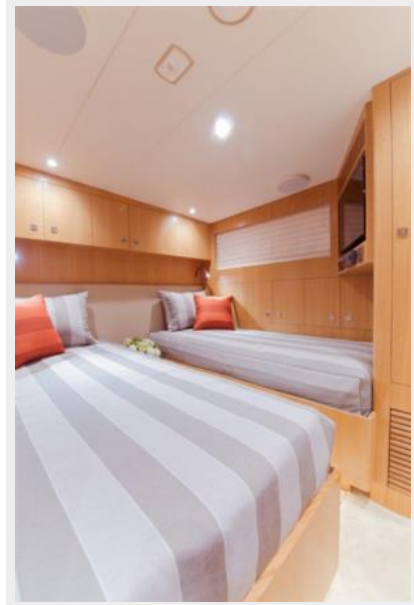
VIP



Crew Quarters



Crew Quarters



Crew Quarters



Engine Room



Engine Room



Aqua Life Layout



CONTACTS

Andrey Shestakov, leading yacht broker of the sales department of Shestakov Yacht Sales Inc. Shestakov Yacht Sales Inc., the official representative of the Miami/Fort Lauderdale FL headquarters.

Contact details

Email: **andrey@shestakovyachtsales.com**

Web: shestakovyachtsales.com/en/

Telephones

USA: **+1(954)274-4435**

Office hours

Monday – Saturday: **9:00 - 21:00 EDT**

Sunday: **closed**

Address



Harbour Towne Marina, 850 NE 3rd St,
STE 213, Dania, FL 33004