

AQUA LIFE — HORIZON



Судостроитель: HORIZON

Год постройки: 2014

Модель: Моторная яхта

Цена: ЦЕНА ЯХТЫ ПО ЗАПРОСУ

Местонахождение: United States

Длина общая: 91' 6" (27.89m)

Ширина: 20' 0" (6.10m)

Мин. осадка: 5' 10" (1.78m)

Крейс. скорость: 18 Kts. (21 MPH)

Макс. скорость: 23 Kts. (26 MPH)

Купить **Aqua Life — HORIZON** а также выбрать подходящую вам яхту из нашего каталога яхт вам поможет опытный яхтенный брокер Андрей Шестаков. На сегодняшний день компания **Shestakov Yacht Sales Inc.** имеет большое количество яхт в собственном списке продаж, а также тесно сотрудничает со всеми крупными яхтенными производителями по всему миру.

Для того чтобы купить яхту **Aqua Life — HORIZON** а также проконсультироваться по любому вопросу связанному с покупкой, продажей, чартером яхт позвоните по телефону **+7(918)465-66-44**.

ОГЛАВЛЕНИЕ

ОГЛАВЛЕНИЕ	2
ХАРАКТЕРИСТИКИ	5
Обзор	5
Основная информация	5
Размеры	5
Скорость, вместимость и масса	6
Размещение	6
Корпус и палуба	6
Информация о двигателе	6
ПОДРОБНОЕ ОПИСАНИЕ	7
Overview	7
Interior Decor	7
Salon	7
Galley	7
Crew Quarters	8
Entertainment Equipment	8
Communication and Navigation	9
Forward and Aft Decks	9
Flybridge and Boat Deck	10
Mechanical	11
Ancillary Equipment	11
Electrical Equipment	12
Исключения	12
Отказ от ответственности	12
ФОТОГРАФИИ	14
Aqua Life 3	14
Aqua Life 2	14
Side Profile	14

Bow Seating and Sunpad	14
Flybridge Serving Bar	14
Flybridge	14
Flybridge	15
Upper Helm	15
Walkaround	15
Aft Deck	15
Aft Deck Serving Bar	15
Main Salon	15
Formal Dining	16
Formal Dining	16
Galley	16
Galley	16
Lower Mini Helm	16
Country Kitchen	16
Stairwell	17
Lower Guest Companionway	17
Master Stateroom	17
Master Stateroom	17
Master Stateroom	17
Master Stateroom	17
Stbd Guest Stateroom	18
Master Stateroom Head	18
Port Guest Stateroom	18
VIP	18
Crew Quarters	19
Crew Quarters	19
Crew Quarters	19
Engine Room	19

Aqua Life Layout	20
Engine Room	20
КОНТАКТЫ	21
Контактная информация	21
Телефоны	21
Время работы	21
Адрес	21

ХАРАКТЕРИСТИКИ

Обзор

This 2015 Horizon E84 motoryacht Aqua Life offers features normally seen on larger vessels but she can be operated with a smaller crew and/or by knowledgeable owner-operators. She is a one-owner yacht that has been meticulously maintained by her full time crew. Numerous indoor and outdoor spaces - including the salon and formal dining areas, open flybridge and aft deck provide flexible options for entertaining guests, and her comfortable four stateroom layout ensures there will be no complaints while on board. A mini lower helm compliments the main helm on the flybridge and is in prime location on the forward main deck, while still allowing room for a very comfortable dinette seating design. Ideally suited for cruising in the Bahamas, this Horizon E84 promises the luxury, function and excitement that you have been searching for in a yacht.

Основная информация

Тип судна: Моторная яхта

Подкатегория: Flybridge

Модельный год: 2015

Год постройки: 2014

Страна: United States

Верх: Hardtop

Открытая палуба мостика: Да

Размеры

Длина общая: 91' 6" (27.89m)

Длина по ватерлинии: 71' 11" (21.92m)

Ширина: 20' 0" (6.10m)

Мин. осадка: 5' 10" (1.78m)

Трапы: 30' 8" (9.35m)

Длина привального бруса: 84' 0"
(25.60m)

Скорость, вместимость и масса

Крейс. скорость: 18 Kts. (21 MPH)

Макс. скорость: 23 Kts. (26 MPH)

Водоизмещение: 156000 Pounds

Вместимость воды: 420 Gallons

Вместимость сточного бака: 200 Gallons **Объем топливного бака:** 2250 Gallons

Размещение

Всего кают: 4

Всего коек: 6

Спальные места: 8

Всего ком. состава: 4

Каюты экипажа: 2

Койки экипажа: 4

Спальных мест экипажа: 4

Комм. состав экипажа: 2

Корпус и палуба

Материал корпуса: Fiberglass

Материал палубы: FRP

Отделка корпуса: Fiberglass

Информация о двигателе

Двигатели: 2

Производитель: CAT

Модель: C32

Тип двигателя: Inboard

Тип топлива: Diesel

ПОДРОБНОЕ ОПИСАНИЕ

Overview

This 2015 Horizon E84 motoryacht Aqua Life offers features normally seen on larger vessels but she can be operated with a smaller crew and/or by knowledgeable owner-operators. She is a one-owner yacht that has been meticulously maintained by her full time crew. Numerous indoor and outdoor spaces - including the salon and formal dining areas, open flybridge and aft deck provide flexible options for entertaining guests, and her comfortable four stateroom layout ensures there will be no complaints while on board. A mini lower helm compliments the main helm on the flybridge and is in prime location on the forward main deck, while still allowing room for a very comfortable dinette seating design. Ideally suited for cruising in the Bahamas, this Horizon E84 promises the luxury, function and excitement that you have been searching for in a yacht!

Interior Decor

- Guest accommodations include master stateroom, port twin cabin, stbd bunk cabin & VIP cabin
- Crew area has 2 x staterooms w/ head, crew galley & dinette, w/ access from salon & transom
- South American Walnut, semigloss for main wood
- Custom luxury soft goods & lighting package
- Day head in main salon

Salon

- Custom granite floor at salon entrance
- Leather L-shaped sofa, loveseat & chair
- Custom coffee table & ottomans
- Wine cooler
- Custom dining table w/ leaf insert & 6 x chairs
- Custom Hi/Lo glass screen separating salon & galley

Galley

- Silestone countertops & country kitchen tabletop
- Subzero full height refrigerators w/ freezer drawers
- Extra Subzero freezer drawers
- GE Cooktop, oven & microwave

- GE Dishwasher
- Broan trash compactor

Crew Quarters

- Kenyon cooktop
- Norcold fridge/freezer
- GE microwave
- GE stacked washer/dryer
- 2 stateroom/2 head layout which sleeps up to 4 crew

Entertainment Equipment

- Panasonic PBX telephones w/ intercom feature in salon, PH, master, VIP & crew mess other cabins have outlets
- Exterior connector for shore phone & TV
- KVH HD7 satellite TV antenna & dummy dome
- Wifi booster system w/ wireless routers

Aft Deck

- 32" LCD TV
- Bose Lifestyle SA3
- stereo system

Salon

- 46" LCD TV
- Bose Lifestyle V35 home theater system w/ iPod dock
- Blu-ray player

Galley

- 28" LCD TV
- Bose Lifestyle SA3 stereo system

Master Stateroom

- 40" LCD TV
- Bose Lifestyle 135 home theater system w/ iPod dock
- Blu-ray player

VIP Stateroom

- 32" LCD TV

- Bose Lifestyle 135 home theatre system w/ iPod dock
- Blu-ray player

Port Twin Guest Stateroom

- 28" LCD TV
- Fusion stereo system

Crew Quarters

- 28" LCD TV (port cabin & mess)
- Fusion stereo system

Flybridge

- Bose Lifestyle SA3 home theatre system

Communication and Navigation

- Garmin 8000 navigational system
- GPSMAP 8208 MDF 8" multifunction display
- GMI 20 Digital Marine instrument display
- GHS 10 handset
- GHC 20 helm control unit & course computer unit
- GARMIN 8000 navigational system
- 3 x GPSMAP 8215 MDF 15" multifunction displays
- GMR 624 HD open array radar 6kW, 72nm
- GMR 1226 HD open array radar 12kW, 72nm
- GXM Satellite weather antenna
- 2 x 300 Marine VHF's
- AIS 600 Class B Transceiver
- GHC 20 Marine Autopilot control unit
- GHP 20 Marine Autopilot system w/ smart pump
- GRF 10 Garmin rudder feedback
- GMI 20 Digital Marine instrument display w/ gWind transducer depth, speed & temp transducer
- GND 10 Black box bridge
- GNT 10 NMEA 2000 transceiver
- Marine WiFi adapter kit

Forward and Aft Decks

- Nonskid forward deck
- Frameless windows, tinted, tempered & laminated glass

- Low-E glass for front windshield
- Custom-designed large “H” window in Master
- Solid S/S rub rail around upper hull side
- 18 x S/S storm covers for portlights
- 2 x Maxwell VWC3500 vertical hydraulic anchor winches
- 2 x High tensile 1/2 inch, 250ft anchor chains
- 2 x Chain counters in flybridge
- 2 x Aritex CQR plough anchors, 80kg
- Freshwater anchor chain washdown
- Heavy-duty S/S 2” handrail w/ 1 1/4” stanchions
- 2 x Deckhouse side entrance doors
- 4 x FRP bulwark side doors
- Fwd sunpads & bench seating bow teak step w/ cushion
- Fwd deck storage lockers for fenders & lines
- Teak aft deck, swim platform & teak steps
- S/S Sliding door for main salon, self-locking
- Custom aft deck Hi/Lo dining table
- Aft deck bar w/ sink, ice maker & fridge
- Aft deck electric folding TV cabinet
- Hydraulic Hi/Lo swim platform, 1500 lb capacity
- S/S gate doors from aft deck to swim platform
- Built-in hot/cold water shower at swim platform
- 8 x S/S sockets on swim platform for removable handrails

Flybridge and Boat Deck

- Nonskid flybridge & boat deck
- Stainless Steel Rails around boat deck
- Oversize drains with strainer on each corner w/ internal overboard drains
- Custom bar w/ sink, fridge & icemaker
- 3 x Custom stainless steel bar stools
- Propane BBQ in boat deck cabinet
- Corian countertops
- Custom U-shaped seating & teak dining table
- Hatch on the hardtop
- 2 x Tokai search lights
- Buell air horns on top of radar arch
- Hydraulic dinghy davit Steelhead SM2000
- Fully air-conditioned bridge
- Helm console w/ full set engine gauges monitoring system for impt. equipment magnetic compass fuel & water gauges nav lights camera system for aft deck & ER & 2 helm chairs

Mechanical

- Twin CAT C32A 1600HP diesel engines w/ reduction gears
- CAT 1000 Hour service recently completed
- Stainless steel Shafts Aquamet 22HS
- 5-Blade propellers
- Main & intermediate bronze struts w/backing plates
- Shaft & rudder packing glands w/ Tides Marine seals
- Glendinning engine controls w/ backup system
- Hynautic power steering system
- Stainless steel Rudder w/ zinc plates
- Stainless steel Emergency tiller in rudder cabin
- Hydraulic ABT bow & stern thrusters, 38HP
- Zero Speed Stabilizer 300/9X
- Stainless steel Hydraulic trim tabs
- Underwater exhaust system for engines w/ mufflers
- Engine compartment ventilation blowers
- Engine mounts on S/S engine bed bonded to FRP hull girder
- Fire insulation & insulated ER door
- Engine alarm system for low oil pressure & high-water temp
- Air compressor
- Central vacuum cleaner
- Mini lower helm w/ controls & display screens on main deck
- Third docking station on aft deck port side

Ancillary Equipment

- Chilled water Marine Air conditioning backup A/C circulation pump
- Aluminum fuel tanks w/sight & electric gauges, 2,250 gallon
- Dual Racor 75/1000 MA fuel filters/water separator, each engine
- Fuel transfer pump
- RACOR 500MA fuel filter for each generator
- Reverso FPS210 fuel polishing system
- Oil change pump system for engines & generator
- Fiberglass water tanks, 420 gallon
- Sea Recovery AQM water maker, 900 gal/day
- High-volume AC freshwater pressure pump & back up DC pump
- Fresh water charcoal filters in main supply pipe & galley
- Marine grade lines for freshwater system
- 2 x 30 Gallon water heaters
- Hot water circulation pump
- Hamann sanitary waste treatment system
- Tecma toilet system

- Holding tank w/macerator pump, 200 gallon
- Sump tank, 100 gallon
- “Y” Valve for holding tank with deck fitting for dockside pump out
- Five electric RULE bilge pumps
- 2 x Manual bilge pumps in ER & forward cabin
- High water level alarm for bilges
- Fire insulation in ER
- Integrated fire alarm system in PH w/ detectors in each cabin
- Fixed fire extinguisher (FM200) for ER w/ remote control
- Auto shutdown system & automatic fire damper system
- 4 x Portable fire extinguishers in recessed lockers

Electrical Equipment

- LED interior & exterior lighting system
- Maretron monitoring & control system
- 2 x Onan 32kW generators w/ sound shield, Hours: Port 3250 Stbd 3250 as of March 2020
- 100A shore power system
- 2 x 100A cable masters
- 2 x 100A ISO boost transformers
- Emergency power package & lighting system
- 2 x House battery inverter/chargers
- Vapor proof battery switch
- 4 x 255Ah AGM start batteries for engines/generators
- 8 x 210Ah AGM batteries for ships DC 24V service power
- 2 x 210Ah emergency batteries w/ dedicated charger
- GFI protection for all AC outlets in heads, galley & ER
- Electrolysis bonding system
- Cathodic protection w/ zinc anodes for shafts, struts, etc
- 4 x Underwater lights
- 2 x Stern docking lights

Исключения

При продаже яхты исключаются личные вещи владельца.

Отказ от ответственности

Компания предоставляет описание судна или яхты добросовестно, но не может гарантировать точность этой информации, а также не ручается за техническое состояние. Покупатель должен проинструктировать своих агентов или оценщиков исследовать представленную информацию более подробно, по собственному желанию.

Продажа судна или яхты, изменение цены или снятие с продажи будет происходить без предварительного уведомления.

ФОТОГРАФИИ

Aqua Life 3



Aqua Life 2



Side Profile



Bow Seating and Sunpad



Flybridge Serving Bar



Flybridge



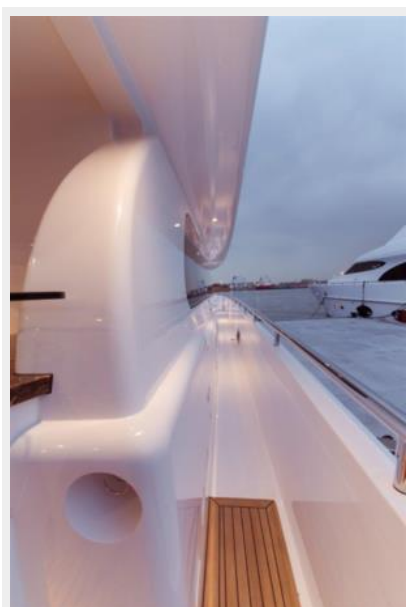
Flybridge



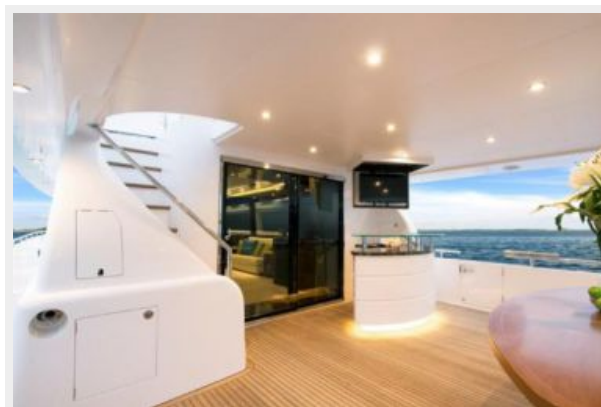
Upper Helm



Walkaround



Aft Deck



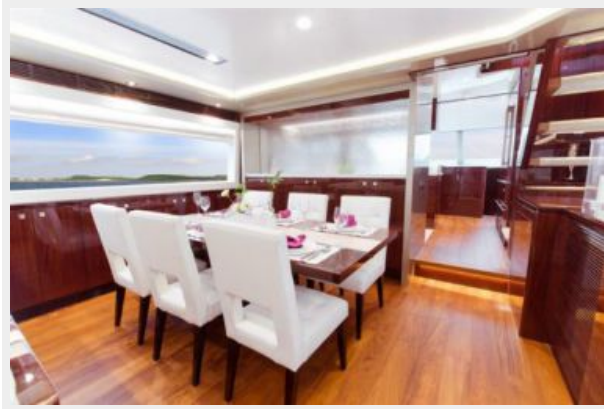
Aft Deck Serving Bar



Main Salon



Formal Dining



Formal Dining



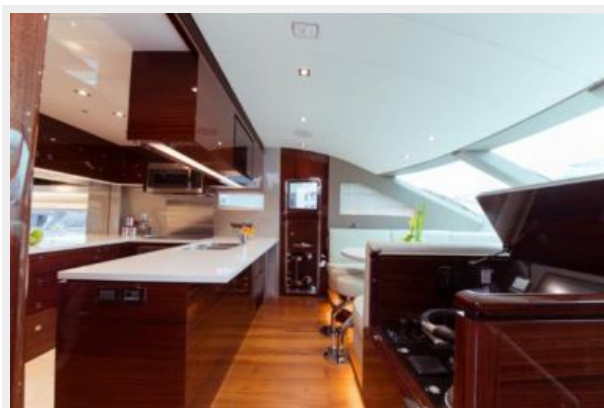
Galley



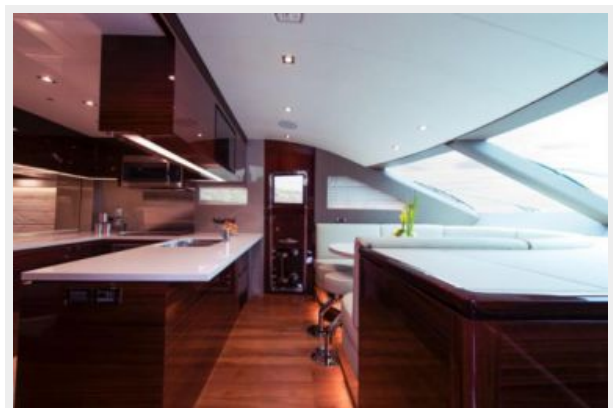
Galley



Lower Mini Helm



Country Kitchen



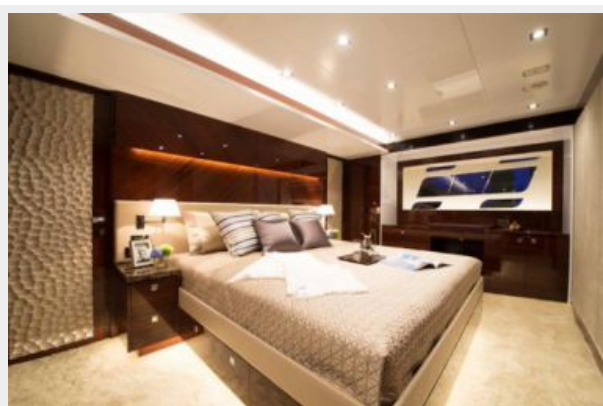
Stairwell



Lower Guest Companionway



Master Stateroom



Master Stateroom



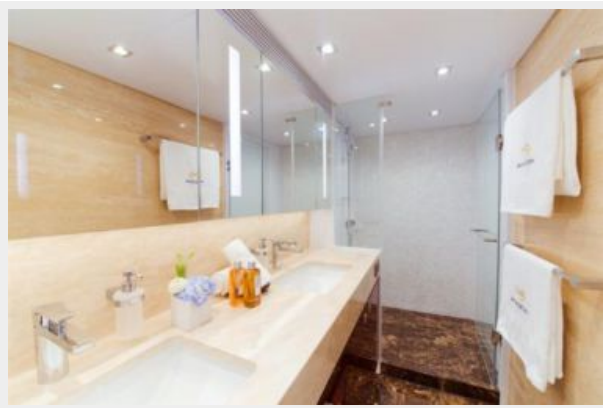
Master Stateroom



Master Stateroom



Master Stateroom Head



Stbd Guest Stateroom



Port Guest Stateroom



VIP



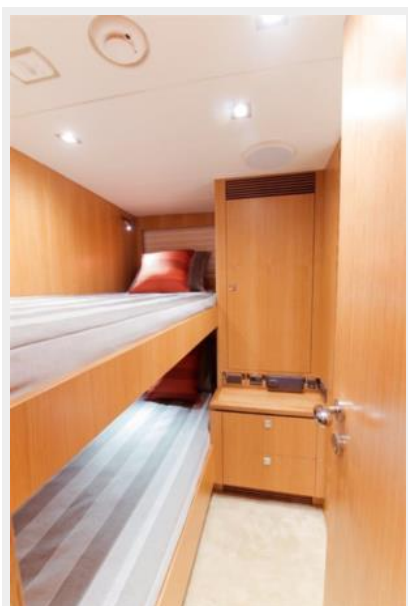
Crew Quarters



Crew Quarters



Crew Quarters



Engine Room



Engine Room



Aqua Life Layout



КОНТАКТЫ

Андрей Шестаков (Andrey Shestakov) – ведущий яхтенный брокер отдела продаж яхт и судов компании Shestakov Yacht Sales Inc. Официальный представитель Shestakov Yacht Sales Inc. для русскоговорящих клиентов в центральном офисе компании в Майами/Форт Лодердейл/Флорида/США.

Контактная информация

Email: andrey@shestakovyachtsales.com

Web: shestakovyachtsales.com

Телефоны

Краснодарский край: **+7(918)465-66-44**

США, Майами, Флорида: **+1(954)274-4435**

Время работы

Понедельник – Суббота: **9:00 - 21:00**
EDT

Воскресенье: **Закрето**

Адрес



Harbour Towne Marina, 850 NE 3rd St,
STE 213, Dania, FL 33004